

2019-2020 AYC Frostbite Series

SI ATTACHMENT A - Courses

- A1 Start

- A1.1 There are two possible starting locations, each with one end on the U.S. Naval Academy – by Hartford Light and by Triton Light.
- A1.2 The shore end of the line will be a staff with an orange flag.
- A1.3 The pin end of the line will be an orange floating mark, EXCEPT when Numeral 1 precedes the course designation, then the pin end will be:
 - (a) for Hartford Light starts: Green “Can 1SC”
 - (b) for Triton Light starts: Yellow “Can B”

- A2 Finish

- A2.1 The finish line will be between a staff with the RC flag on the 2nd deck of the AYC Clubhouse and the flagpole with yard arm at the Annapolis City Marina.

- A3 Marks

- A3.1 Marks are government marks, except for the special drop marks.
- A3.2 Except where specifically noted, rounding marks are to be rounded on the side shown in the course diagrams
- A3.3 S is a special drop mark approximately 200 yards south of the Naval Academy Bridge at @ 38 59.534 N and 76 29.165 W.
- A3.4 S1 is a special drop mark on a line between Annapolis Harbor Channel Light 4 and Back Creek entrance mark Green B1.
- A3.5 Can “1SC”, FI R “4”, FI Y “A” and FI “HP” are passing marks and shall always be passed on the channel side.
- A3.6 Marks “A”, “B”, “C”, “D” refer to yellow cans in vicinity of the Naval Academy (Note: Yellow Can “A” is NOT Dolphin FI Y “A”).

2019-2020 AYC Frostbite Series
SI ATTACHMENT A - Courses

Courses - Hartford Start

<p><i>'A' Courses to starboard</i> Marks and rounding order AR: Start, Can 13, Finish A1: Start, Can 13, Green 9, Finish A2: Start, Can 13, Can 7, Finish A3: Start, Can 13, Green 5, Finish A4: Start, Can 13, S1, Finish</p>	<p><i>'B' Courses to stbd</i> Marks and rounding order BR: Start, Green 9, Finish B1: Start, Green 9, Can 5, Finish B2: Start, Green 9, S1, Finish</p>	<p><i>'C' Courses to stbd</i> Marks and rounding order CR: Start, Can 7, Finish C1: Start, Can 7, Can 5, Finish C2: Start, Can 7, S1, Finish</p>
<p><i>'A' Courses to port</i> Marks and rounding order A: Start, Can 13, Finish A1R: Start, Green 9, Can 13, Finish A2R: Start, Can 7, Can 13, Finish A3R: Start, Green 5, Can 13, Finish A4R: Start, S1, Can 13, Finish</p>	<p><i>'B' Courses to port</i> Marks and rounding order B: Start, Green 9, Finish B1R: Start, Can 5, Green 9, Finish B2R: Start, S1, Green 9, Finish</p>	<p><i>'C' Courses to port</i> Marks and rounding order C: Start, Can 7, Finish C1R: Start, Can 5, Can 7, Finish C2R: Start, S1, Can 7, Finish</p>

Courses - Triton Light Start

<p><i>'A' Courses to starboard</i> Marks and rounding order A1: Start, S, Can B, Can A, Finish A2: Start, S, Can B, Green 9, Finish A3: Start, S, Can B, Can 7, Finish A4: Start, S, Can B, Green 5, Finish</p>	<p><i>'A' Courses to port</i> Marks and rounding order A1R: Start, Can A, Can B, S, Finish A2R: Start, Green 9, Can B, S, Finish A3R: Start, Can 7, Can B, S, Finish A4R: Start, Green 5, Can B, S, Finish</p>	
<p><i>'B' Courses</i> Marks and rounding order. Marks to be left to starboard except Can 13 to be left to port. B1: Start, S, Can B, Nun 8, Can 13, Finish B2: Start, S, Can B, Red 6, Can 13, Finish B3: Start, S, Can B, S1, Can 13, Finish</p>	<p><i>'C' Courses to starboard</i> Marks and rounding order C1: Start, Green 9, Finish C2: Start, Can 7, Finish C3: Start, Green 5, Finish C4: Start, S1, Finish</p>	<p><i>'D' Courses to port</i> Marks and rounding order D1: Start, S1, Green 5, Finish D2: Start, S1, Can 7, Finish D3: Start, S1, Green 9, Finish D4: Start, S1, Can 13, Finish</p>

2018-2019 AYC Frostbite Series

SI ATTACHMENT A - Courses

Hartford Start, 'A' Courses to starboard

Marks and rounding order

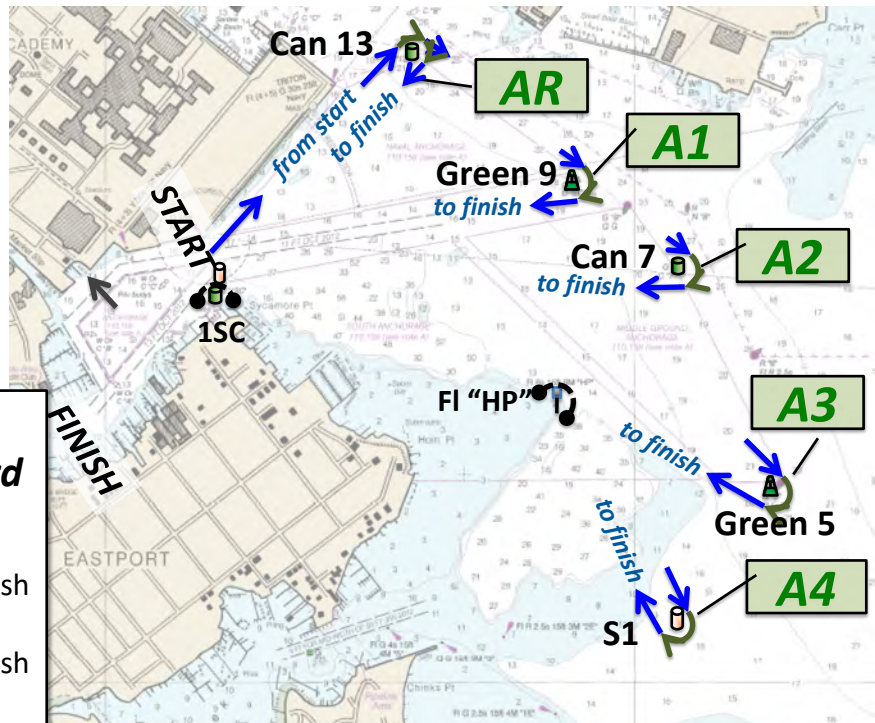
AR: Start, Can 13, Finish

A1: Start, Can 13, Green 9, Finish

A2: Start, Can 13, Can 7, Finish

A3: Start, Can 13, Green 5, Finish

A4: Start, Can 13, S1, Finish



Hartford Start, 'A' Courses to port

Marks and rounding order

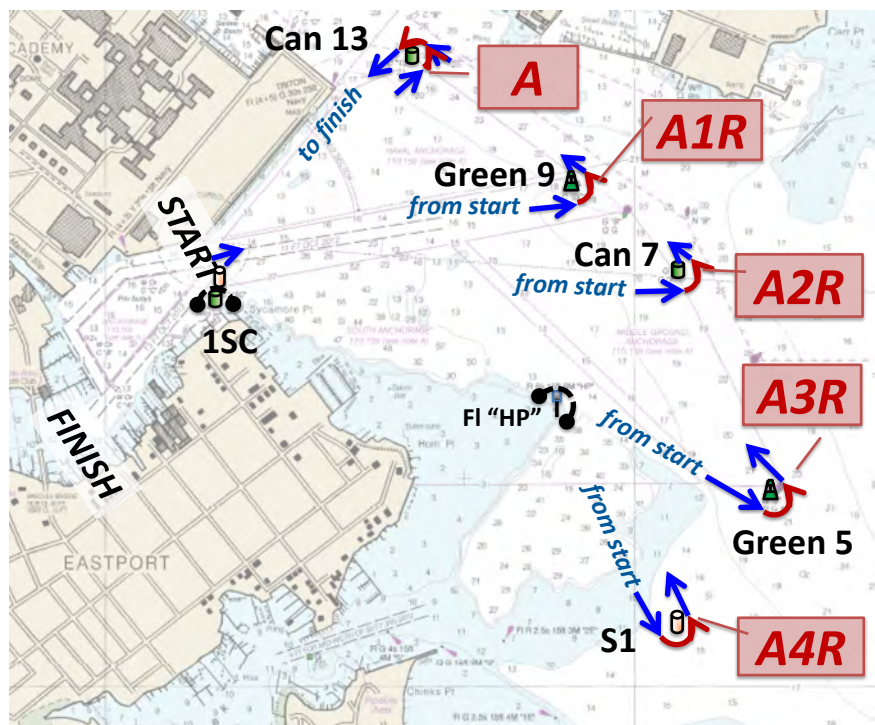
A: Start, Can 13, Finish

A1R: Start, Green 9, Can 13,
Finish

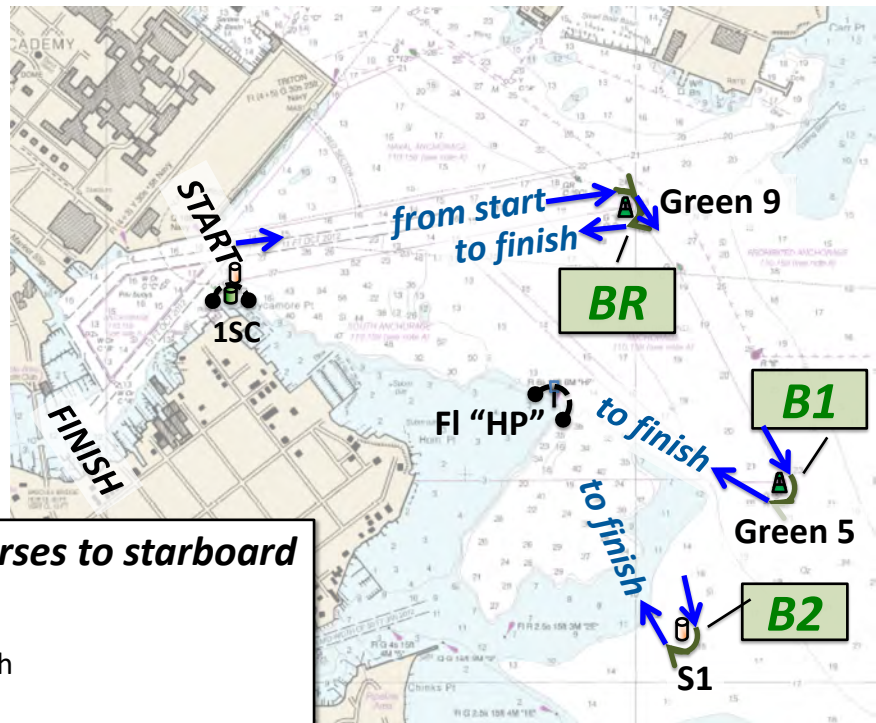
A2R: Start, Can 7, Can 13,
Finish

A3R: Start, Green 5, Can 13,
Finish

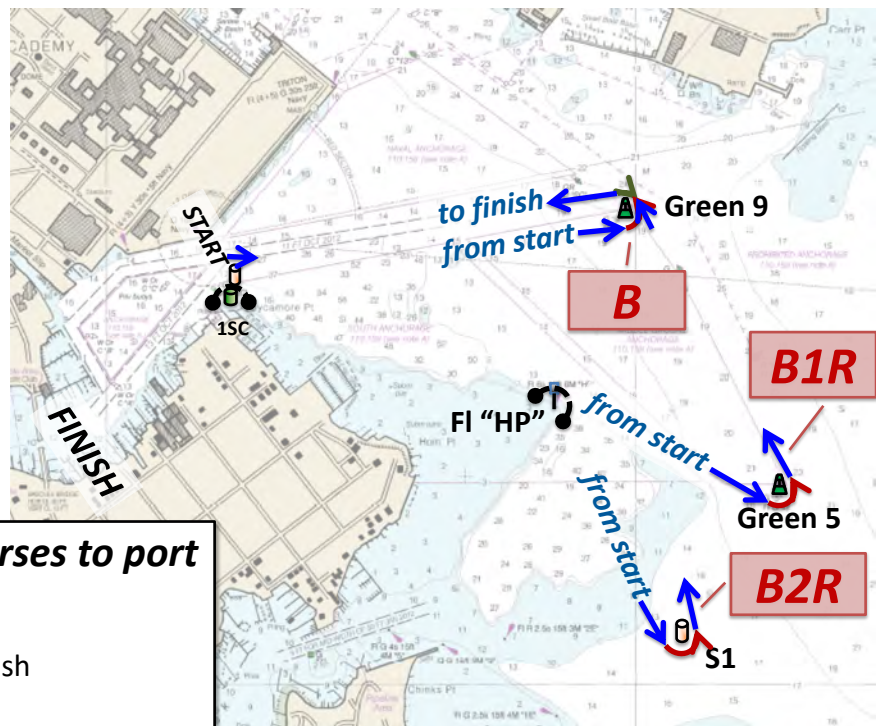
A4R: Start, S1, Can 13,
Finish



2018-2019 AYC Frostbite Series SI ATTACHMENT A - Courses



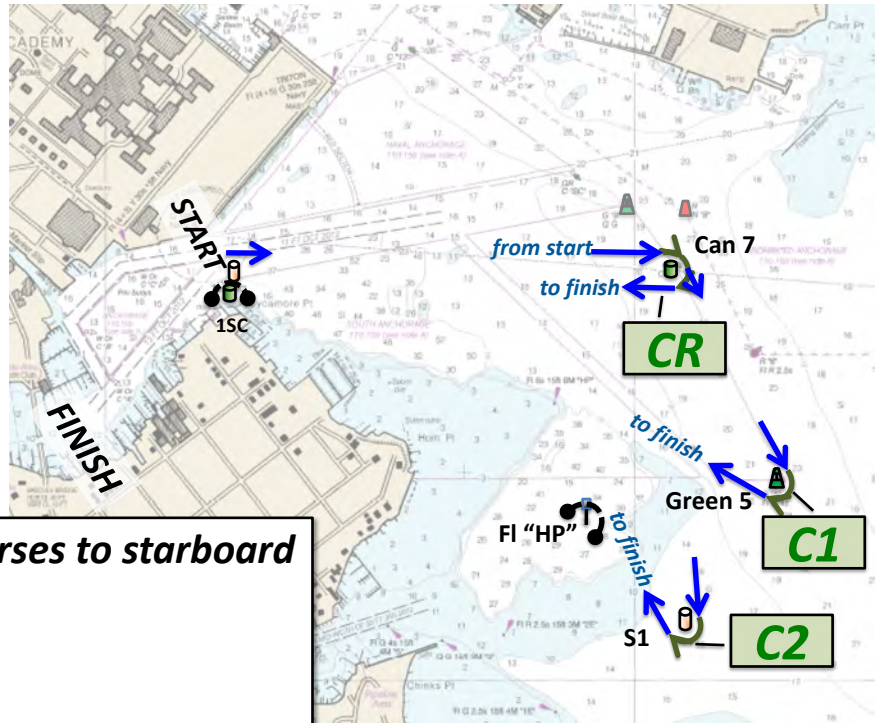
Hartford Start, 'B' Courses to starboard
 Marks and rounding order
 BR: Start, Green 9, Finish
 B1: Start, Green 9, Can 5, Finish
 B2: Start, Green 9, S1, Finish



Hartford Start, 'B' Courses to port
 Marks and rounding order
 B: Start, Green 9, Finish
 B1R: Start, Can 5, Green 9, Finish
 B2R: Start, S1, Green 9, Finish

2018-2019 AYC Frostbite Series

SI ATTACHMENT A - Courses



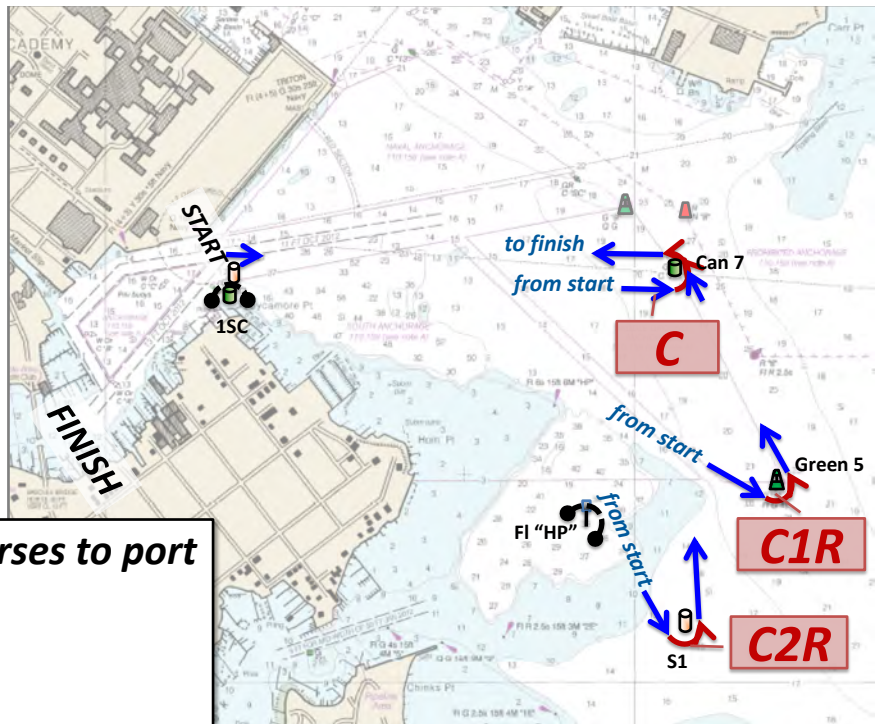
Hartford Start, 'C' Courses to starboard

Marks and rounding order

CR: Start, Can 7, Finish

C1: Start, Can 7, Can 5, Finish

C2: Start, Can 7, S1, Finish



Hartford Start, 'C' Courses to port

Marks and rounding order

C: Start, Can 7, Finish

C1R: Start, Can 5, Can 7, Finish

C2R: Start, S1, Can 7, Finish

2018-2019 AYC Frostbite Series

SI ATTACHMENT A - Courses

Triton Light Start, 'A' Courses to starboard

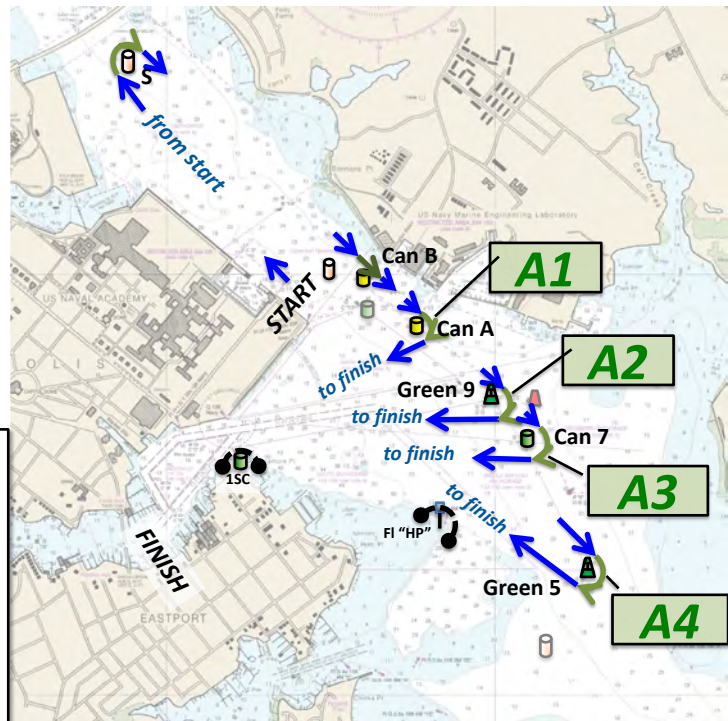
Marks and rounding order

A1: Start, S, Can B, Can A, Finish

A2: Start, S, Can B, Green 9, Finish

A3: Start, S, Can B, Can 7, Finish

A4: Start, S, Can B, Green 5, Finish



Triton Light Start, 'A' Courses to port

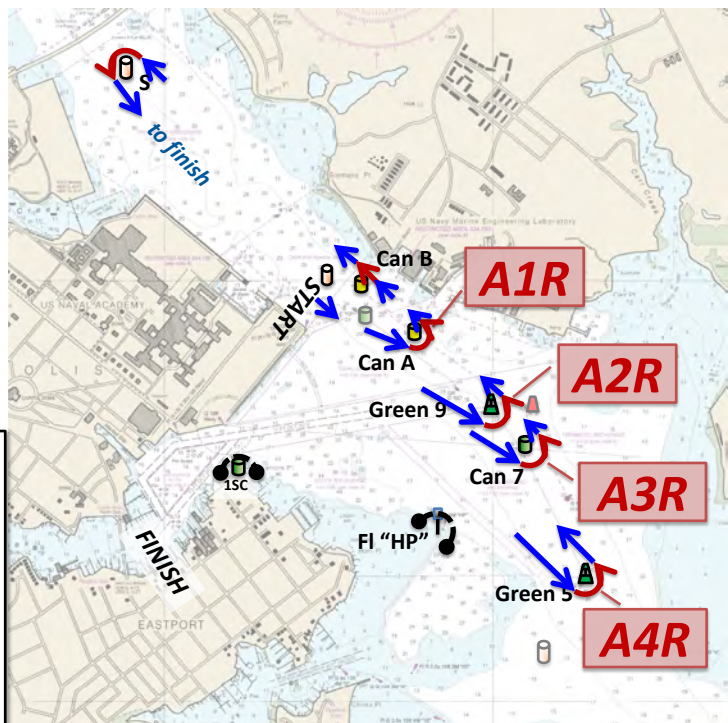
Marks and rounding order

A1R: Start, Can A, Can B, S, Finish

A2R: Start, Green 9, Can B, S, Finish

A3R: Start, Can 7, Can B, S, Finish

A4R: Start, Green 5, Can B, S, Finish



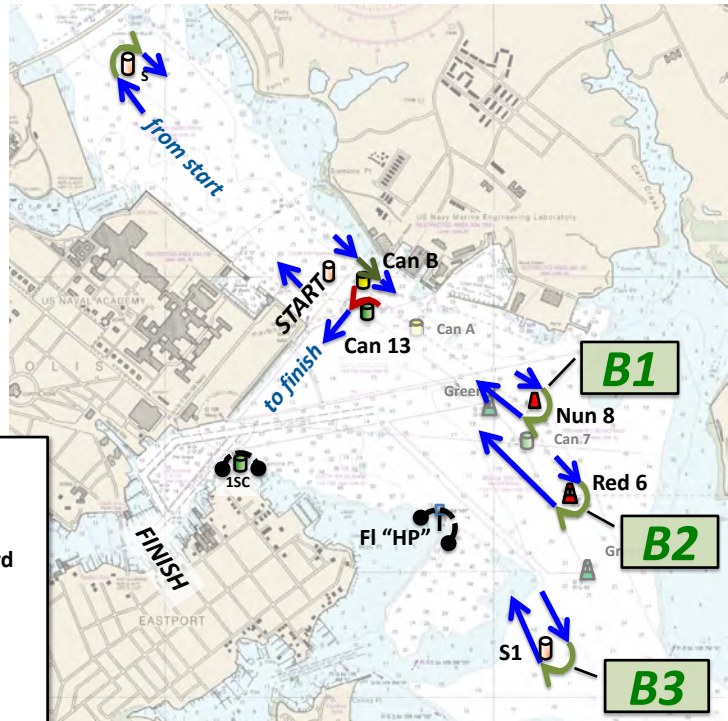
2018-2019 AYC Frostbite Series

SI ATTACHMENT A - Courses

Triton Light Start, 'B' Courses to starboard

Marks and rounding order. Marks to be left to starboard except Can 13 to be left to port.

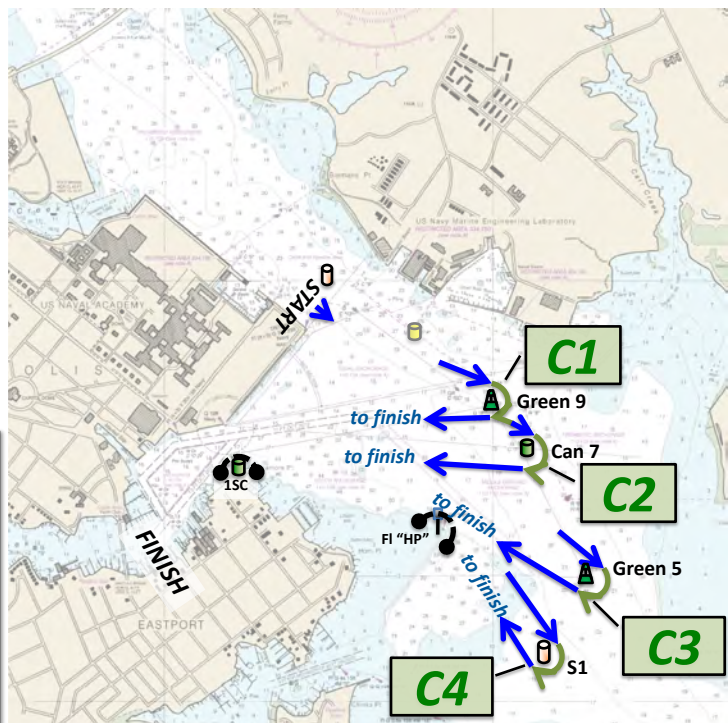
- B1: Start, S, Can B, Nun 8, Can 13, Finish
- B2: Start, S, Can B, Red 6, Can 13, Finish
- B3: Start, S, Can B, S1, Can 13, Finish



Triton Light Start, 'C' Courses to starboard

Marks and rounding order

- C1: Start, Green 9, Finish
- C2: Start, Can 7, Finish
- C3: Start, Green 5, Finish
- C4: Start, S1, Finish



2018-2019 AYC Frostbite Series SI ATTACHMENT A - Courses

Triton Light Start, 'D' Courses to port

Marks and rounding order

D1: Start, S1, Green 5, Finish

D2: Start, S1, Can 7, Finish

D3: Start, S1, Green 9, Finish

D4: Start, S1, Can 13, Finish

