



# SAILING INSTRUCTIONS



## 2019 Lady Driver Race October 19, 2019

HOSTED BY:  
Ventura Yacht Club  
1755 Spinnaker Drive  
Ventura, California 93001

**1. RULES:**

This race will be governed by the *rules* as defined in the *Racing Rules of Sailing* (RRS) and the 2019 Lady Driver Notice of Race, except as any of these are altered by these Sailing Instructions or by any instructions that may be announced by the Race Committee (RC) from its station. At least one Lady must be onboard, and a Lady must be at the helm during the race (periodic short breaks are allowed, but not during the starting sequence, while rounding marks, or while finishing). Boats can have more than one lady driver.

**2. ENTRIES:**

Eligible boats may enter by completing registration with Ventura Yacht Club. Entry deadline is 0900 on race day. However, competitors are urged to register online prior to race day. Go to [www.venturayachtclub.org](http://www.venturayachtclub.org) and follow the link (Water>Racing>Regatta Network). It's easy! Additional information may also be available there. The entry fee is \$30 and can be paid online. PHRF Area A Random Leg Course ratings will be used.

**3. NOTICES TO COMPETITORS:**

Notices to competitors will be posted on the VYC bulletin board in the lower patio.

**4. CHANGES TO SAILING INSTRUCTIONS:**

Changes to the Sailing Instructions will be posted before 0930 on the day they will take effect. Oral instructions from the RC on station on the water will be signaled by display of code flag "L" on the Committee Boat.

**5. SCHEDULE OF RACE:**

The Warning signal for the first class is scheduled for 1125.

**6. CLASSES:**

Classes (and class flags) will be established at the skippers meeting. PHRF spinnaker and non-spinnaker classes are planned.

**7. THE COURSES:**

7.1 The courses will be chosen from the 2019 Lady Driver Course Chart which is part of these Sailing Instructions.

7.2 Designation of the course to be sailed will be signaled from the race committee boat before or with the warning signal for each starting class.



# SAILING INSTRUCTIONS



## 8. CHECKING IN:

Each boat is requested to check-in after the RC boat is anchored. A boat may check-in either by sailing close by the stern of the committee boat and hailing her sail number until acknowledged by the RC or by calling the RC on VHF channel 69.

## 9. THE START:

- 9.1 The race will be started in accordance with Racing Rule 26. The order of the starts will be announced at the skipper's meeting.
- 9.2 The starting line S will be between the Mandalay buoy as the port-side mark and an orange flag or shape mounted on the Committee Boat as the starboard-side mark.
- 9.3 Boats whose preparatory signal has not been made shall keep clear of the starting area and of all boats whose preparatory signal has been made.

## 10. RECALLS:

- 10.1 Individual recalls will be signaled in accordance with Racing Rule 29.2 [code flag "X" and 1 sound signal]. After the starting signal, the Race Committee will attempt to hail the sail number(s) of the recalled boat(s) on VHF Channel 69. The following shall not be grounds for granting redress:
  - a. Failure of a boat to hear the recall hail or broadcast.
  - b. A boat's position in the sequence of hailed numbers or broadcast numbers.
  - c. Failure of the Race Committee to hail or broadcast numbers.
- 10.2 General recalls will be signaled in accordance with Racing Rule 29.3 [code flag "first substitute" and 2 sound signals]. A new warning signal for the recalled class will be made one minute after the "first substitute" is lowered. When a general recall has been signaled, the starts for the succeeding classes shall follow the new start for the recalled class.

## 11. THE FINISH:

- 11.1 The finish shall be on a line from the VYC clubhouse balcony to the green light standard (#3) near the south end of the detached Ventura Harbor breakwater.
- 11.2 Competitors are requested to notify the RC when approximately 1/2 hour from the finish. If the RC is not on station, boats shall record their own finish times. The RC will monitor VHF Channel 69 throughout the race.

## 12. TIME LIMIT:

If any boat in a class finishes before 5pm, the race is valid for that class. If no boat in a class finishes before 5pm, the race is abandoned for that class.

## 13. RETIREMENT:

A boat that has started and subsequently retires is requested to notify the RC as soon as possible. The RC will monitor VHF channel 69. Club phone number is 805-642-0426.

## 14. PROTESTS:

Protests shall be written on forms available at the club and shall be filed with the Race Committee within 1 hour of the finish time of the protesting boat (or within 1 hour of her return to harbor if she retires).



# SAILING INSTRUCTIONS



## 15. PENALTIES:

For a breach of a rule other than part 2 and RRS 31, the penalty may be less than DSQ, if the protest committee so decides

## 16. SCORING:

RRS Low Point Scoring will be used.

## 17. SAFETY:

- Minimum crew requirement is 2. Racers are reminded that they are bound by the International Regulations for Preventing Collisions at Sea. All boats must conform to USCG and US Sailing Safety Equipment Requirements (USSER) for a USSailing Nearshore Race as modified below. [USSERs are available online at [ussailing.org](http://ussailing.org) (click on *Safety*)].
- When FLAG "Y" is displayed with one sound before or with the warning signal, competitors shall wear personal flotation devices, except briefly while changing or adjusting clothing or personal equipment. When flag Y is displayed ashore, this rule applies at all times while afloat. Wet suits and dry suits are not personal flotation devices.
- USS SER 2.4.4 is in effect for this race and modified to require lifelines even if they are not uncoated stainless steel.
- USS SER 3.19.1 is modified to allow compasses such as the TACK TICK and Velocitek Shift (non GPS) magnetic compasses with mounted brackets as long as they are tethered so the device may not be lost overboard.
- USS SER Rule 3.8.2 is in effect for this race and modified to require a waterproof VHF or a VHF with a waterproof cover even if it does not have DSC/GPS capability.
- USS SER 3.3.1 is modified to allow running lights that are mounted below deck level (common on 90's and earlier boats).

## 18. INSURANCE:

Each participating boat shall be insured with valid third-party liability insurance.

## 19. NON-SPINNAKER CLASS DEFINITIONS:

- 19.1 No spinnakers are allowed. All headsails must meet the measurements of Racing Rule 50.4.
- 19.2 Only one spinnaker pole or whisker pole may be used at a time and, when in use, shall be attached to the foremost mast.
- 19.3 Use of headsails larger than 155% LP carries a 6 second per mile penalty unless the boat is already handicapped for such larger sail.
- 19.4 Only one headsail may be carried set and must be attached to the headstay.

## 20. TROPHIES:

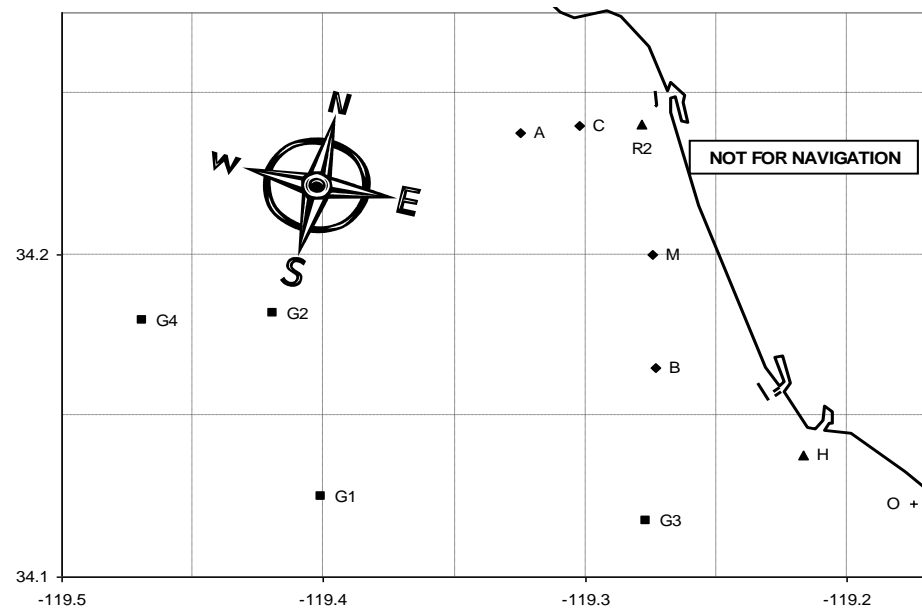
Awards will be presented after racing at VYC. Competitors and guests are encouraged to attend.



# SAILING INSTRUCTIONS

## 2019 Lady Driver Race Course Chart

#	Course	Approx. Heading to 1st Mark	Length
10	S Wp Mp R2s F	To be posted on R/C signal boat	3.9
11	S Wp Ms R2s F		3.9
12	S Wp Mp As F		7.66
13	S Wp Ms As F		7.66
14	S Wp Mp R2p Cp F		6.28
15	S Wp Ms R2p Cp F		6.28
16	S Wp Mp R2p Ap F		8.98
17	S Wp Ms R2p Ap F	8.98	
18	S Bs R2s F	165	7.02
19	S Bs As F	165	10.31
20	S G3s R2s F	165	12.8
21	S G3s As F	165	15.76
22	S G1s R2s F	220	17.37
23	S G2s F	250	15.89
24	S G2s Mp R2s F	250	17.91
25	S As F	300	6.66
26	S As R2p Cp F	300	9.14
27	S As R2p As F	300	12.0
28	S As Mp R2s F	300	10.38
29	S As Bp R2s F	300	14.03
30	S As Mp R2p As F	300	15.46



MARKS		APPROX LOCATION	
<b>A</b>	Fish Sticks spar buoy	L: 34° 14.4'N	Lo: 119° 19.9'W
<b>B</b>	"Wes" spar buoy	L: 34° 09.9'N	Lo: 119° 16.5'W
<b>C</b>	Chips spar buoy	L: 34° 14.4'N	Lo: 119° 18.2'W
<b>M</b>	Mandalay spar buoy	L: 34° 12.0'N	Lo: 119° 16.5'W
<b>R2</b>	Whistle buoy R"2V"	L: 34° 14.4'N	Lo: 119° 16.7'W
<b>G1</b>	Platform Gail	L: 34° 07.5'N	Lo: 119° 24.0'W
<b>G2</b>	Platform Gilda	L: 34° 10.9'N	Lo: 119° 25.1'W
<b>G3</b>	Platform Gina	L: 34° 07.0'N	Lo: 119° 16.6'W
<b>W</b>	Inflatable yellow buoy	0.5 miles from Mandalay spar buoy	