

2019 – 2020 Winter Series

Viper 640 and VX One

Feb 8-9th 2020

The Organizing Authority is the Sarasota Sailing Squadron



Sailing Instructions

1 RULES

The Regattas will be governed by the *rules* as defined in *The Racing Rules of Sailing* (RRS).

2 NOTICES TO COMPETITORS

- 2.1 Notices to competitors will be posted on the regatta notice board located near the Sarasota Sailing Squadron office.
- 2.2 The race committee will use VHF channel **78** to communicate with competitors on the water.

3 CHANGES IN SAILING INSTRUCTIONS

Any changes will be posted before 0800 hours on the day it will take effect, except that any change in the schedule of races will be posted before 2000 hours the day before the change is to take effect.

4 SIGNALS MADE ASHORE

- 4.1 Signals made ashore will be displayed from the Sarasota Sailing Squadron flagpole on the south side of the screened porch.
- 4.2 When flag AP is displayed ashore, "1 minute" is replaced by "not less than 45 minutes" in the race signal.

5 RACING AREA

The racing area will be on Sarasota Bay approximately 1-2 miles north of the Clubhouse, as shown in Attachment I.

6 CLASS FLAG

The class flag will be a white flag with the class insignia.

7 SCHEDULE

7.1

Event Day 1:

Registration	0900-1000
Competitors Briefing	1030
Warning Signal	1200

Event Day 2:

Warning Signal	1000
No Warning Signal After	1500 (changed from past years)
Awards (if applicable)	As soon as practical after racing

7.2 A maximum of 10 races will be run for the regatta.

8 MARKS

- 8.1 Windward and leeward marks will be orange tetrahedrons. The offset mark will be a small orange ball.
- 8.2 The starting will be green tetrahedrons and the finish mark will be a orange ball.
- 8.3 New marks, as provided in SI 12, will be yellow tetrahedrons.

9 THE COURSES

- 9.1 The diagrams and descriptions in Attachment II show the courses, including the approximate angles between legs and the order in which marks are to be passed.
- 9.2 If only one leeward mark is present it shall be rounded to port.
- 9.3 The course identifier, approximate magnetic bearing and distance in nautical miles to the first mark will be displayed from the race committee signal vessel prior to the warning signal for each race.

An example is shown below:

5	Five legs, finishing to windward
270	Approx magnetic bearing to windward mark
1.2	1.2 nm to windward mark

10 THE START

The starting line will be between a staff displaying an orange flag on the race committee signal vessel at the starboard end and either (a) the course side of the starting mark or (b) a staff displaying an orange flag on a vessel at the port end.

11 RECALLS

- 11.1 When an individual recall is signaled, the race committee will attempt to hail OCS boats on VHF.
- 11.2 The timing and order of such hails or the failure of a boat to hear the hail shall not be grounds for redress, changing RRS 62.

12 CHANGE OF THE NEXT LEG OF THE COURSE

To change the next leg, the race committee will lay a new mark, move the finishing line or move the gate and remove the old mark as soon as practicable. When in a subsequent change a new mark is replaced, it will be replaced by an original mark.

13 THE FINISH

- 13.1 The finishing line will be between a staff displaying an orange flag on a race committee vessel and the course side of the finishing mark.

13.2 Flag A displayed with no sound while boats are finishing means “No more racing today.”

14 TIME LIMITS

14.1 The time limit for the first boat to sail the course and finish is 90 minutes.

14.2 Boats still racing more than 30 minutes after the first boat sails the course and finishes will be scored TLE (Time Limit Expired) without a hearing. The score will be 2 points more than the last boat to finish. This changes RRS 35, A4, and A5.

15 PENALTY SYSTEM

15.1 The first two sentences of rule 44.1 are changed to: “A boat may take a One-Turn Penalty when she may have broken a rule of Part 2 or rule 31 while *racing*. However, when she may have broken a rule of Part 2 while in the *zone* around a *mark* other than a starting *mark*, her penalty shall be a Two-Turns Penalty.”

15.2 Post-Race Penalties (Appendix T1) will apply.

15.3 Arbitration will be offered per Appendix T.

16 PROTESTS AND REQUESTS FOR REDRESS

16.1 Protest forms are available in the Regatta Room. Protests shall be delivered there within the protest time limit which is **45** minutes after the race committee finish boat docks after the last race of the day.

16.2 The race committee will post a list of penalties being assigned by the race committee prior to the end of protest time limit. The deadline for requesting redress based on these scores will be either 30 minutes after posting of the penalty notice or the protest time limit, whichever is later. This changes RRS 62.2.

16.3 Notices will be posted promptly after the receipt of a protest or a request for redress to inform competitors of hearings in which they are parties or named as witnesses. Hearings will be held in the Regatta Room in approximately the order of receipt beginning as soon as possible after their receipt.

16.4 On the last day of each Regatta a request for redress based on a jury decision shall be delivered no later than 30 minutes after the decision was posted, changing RRS 62.2.

17 SAFETY

17.1 Prior to the warning signal for the first race of each day in which it intends to compete, each boat is requested to check in by VHF or sail by the race committee signal boat and hail its sail number.

17.2 A boat retiring from a race or leaving the racing area early shall promptly notify the race committee either by hail, over VHF, or by telephone to the Sarasota Sailing Squadron office: 941-388-2355.

18 RADIO COMMUNICATION

A boat shall neither make nor receive radio, phone or other data transmissions while racing not available to all boats, except in an emergency

19 SCORING

19.1 For each Regatta:

19.1.1 If 5 or fewer races are completed, a boat’s Regatta score will be the total of her race scores. If 6 or more races are completed, a boat’s Regatta score will be the total of her scores excluding her worst score.

19.1.2 One completed race is necessary to constitute a Regatta.

19.2 Winter Series scoring for **Viper 640**:

19.2.1 For the Vipers 640 series scoring purposes, any boat that competes in at least one of the

series events will also be scored in the entire series. A boats series score will be her total score, including all races not sailed in the series, excluding her worst 30% (rounded to the next higher whole number) of race scores.

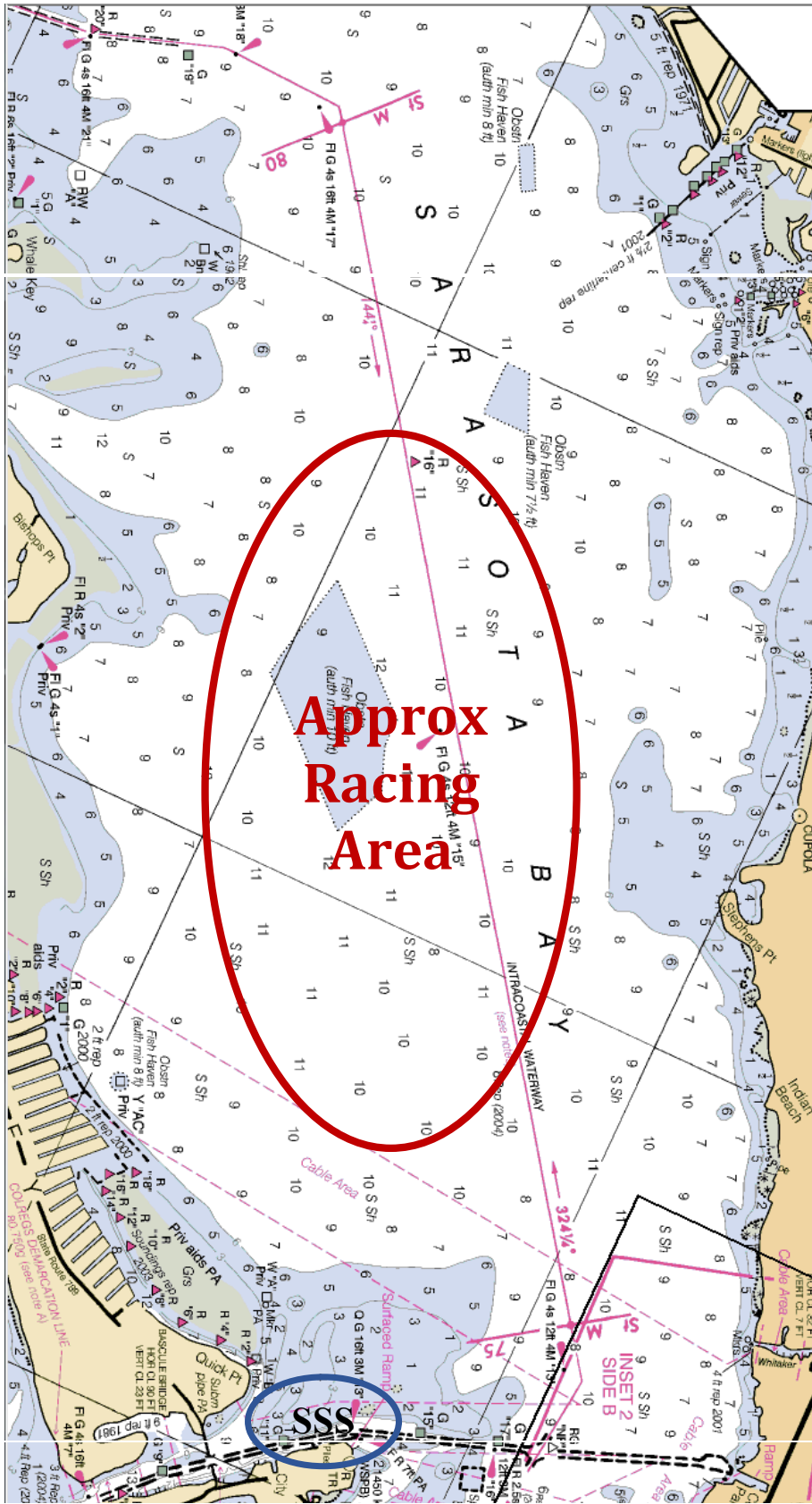
19.3 Winter Series scoring for **VX One**:

19.3.1 TBD

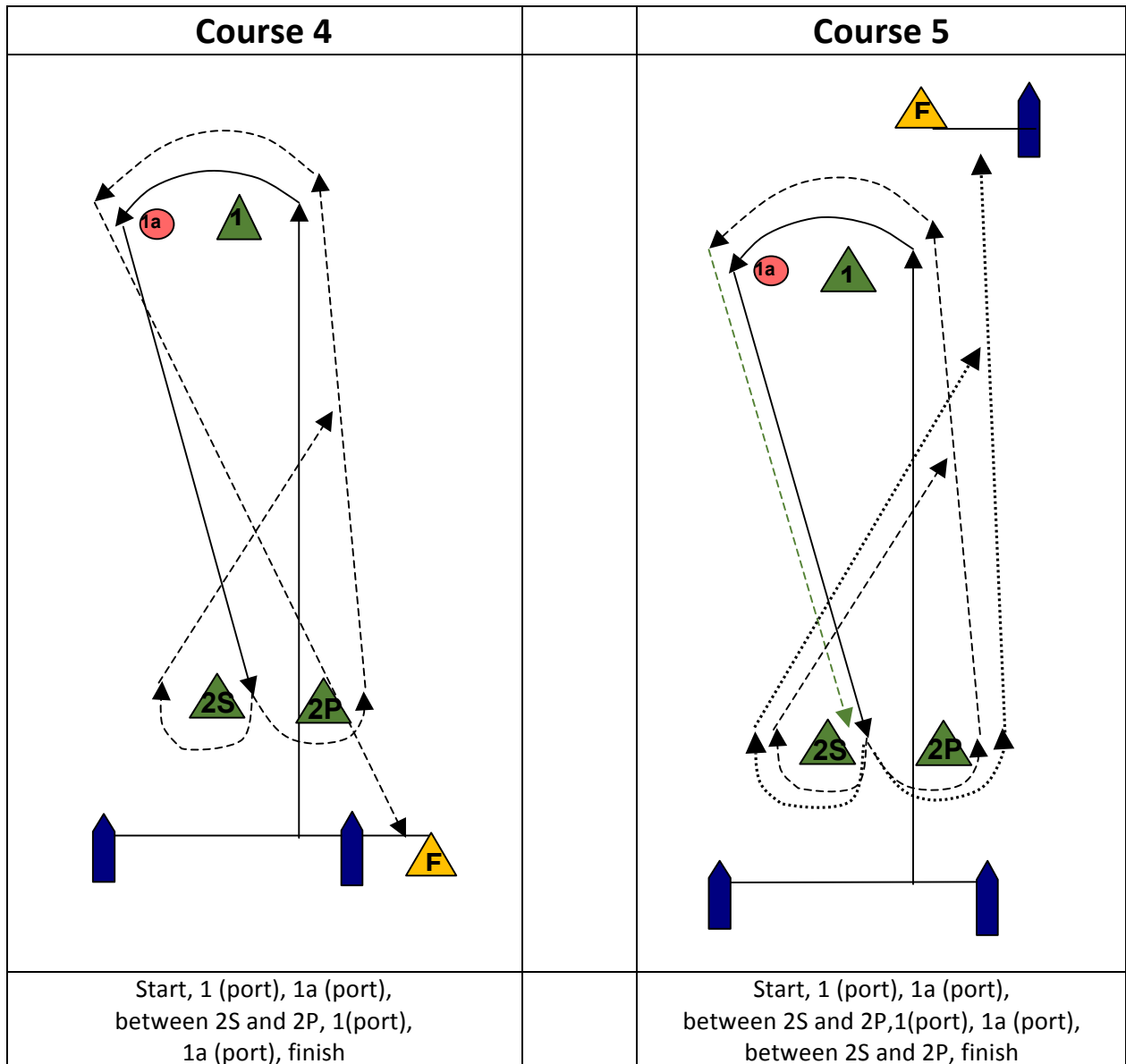
19.4 Ties and Other Rules

- Race ties will be handled using rule A7.

Attachment 1 - Approximate Racing Area



Attachment II – Sample Course Diagrams



Other possible courses:

Course 3: Start - 1 - 1a - Gate – Finish (Upwind)

Course 6: Start - 1 - 1a - Gate - 1 - 1a - Gate- 1 - 1a – Finish (Downwind)

Course 7: Start – 1 – 1a – Gate – 1 – 1a – Gate- 1 – 1a – Gate – Finish (Upwind)