

THE RIVER CITY REGATTA
March 14th & 15th, 2020
The Rudder Club of Jacksonville
8533 Malaga Avenue
Jacksonville, FL 32244

SAILING INSTRUCTIONS

1 RULES

- 1.1 The regatta will be governed by the rules as defined in the current Racing Rules of Sailing (RRS).
- 1.2 US SAILING Prescriptions will apply.
- 1.3 Rule A4 of the RRS is changed by SI 10.3
- 1.3 Rules 35 and A4.1 of the RRS are changed by SI- 13.

2 NOTICES TO COMPETITORS

Official notices to competitors will be posted on the notice board located on the north exterior wall of the Rudder Club and the official web site at <https://www.regattanetwork.com/event/20082>.

3 CHANGES IN THE SAILING INSTRUCTIONS

Any change in the Sailing Instructions will be posted on the Official Bulletin Board on the Rudder Club north wall and on the Web Site listed in SI-2. Changes after 11:00, 10 March will be in the form of a Notice to Competitors except that any change to the schedule of races will be posted by 20:00 on the day before it will take effect. Oral changes may be made on the water and will be communicated to each boat prior to her warning signal.

4 SIGNALS MADE ASHORE

- 4.1 Signals made ashore will be displayed from the flag pole located on the north side of the Rudder Club.
- 4.2 Code Flag "AP", Answering Pennant, displayed ashore with two sound signals (one when lowered) means "The race is postponed" The warning signal will be made not less than 60 minutes after "AP" is lowered.

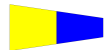


5 SCHEDULE OF RACES

- 5.1 Five races are scheduled. Additional races may be scheduled for individual classes at that class's request.
- 5.2 Class divisions where differing from SI-6 will be posted on the Official Bulletin Board.
- 5.3 Schedule
 - SATURDAY 14 March** - One design, PHRF and Portsmouth classes - three races planned.
Late registration: 11:00 –11:30
Competitors' meeting: 12:00 (Optional)
Warning signal for first class: 12:55
 - SUNDAY 15 March** - One design, PHRF and Portsmouth classes - two races planned.
Warning signal for first class 09:55 *Note - No starting sequence will be commenced after 12:30. NOTE: The actual number of races on each day may vary depending on weather and other circumstances.
- 5.4 Flag A displayed, with no sound, while boats are finishing means **"No more racing today."**

6 CLASS FLAGS

Class flags will be the International Numeral Pennants as depicted under Race Signals in the RRS. Assignment of spares will be posted as a Notice to Competitors on both the electronic and physical bulletin boards.

Portsmouth Multihull	P1	
PHRF Spinnaker	P2	
PHRF Non-Spinnaker	P3	
PHRF Cruiser	P4	

Thistle	P5	
Flying Scot	P6	
Portsmouth Monohull	P8	

7 RACING AREA

The racing area will be in the St. Johns River between the Buckman Bridge to the south and the Fuller Warren Bridge to the north as depicted on NOAA Chart 11492.

8 THE COURSE

- 8.1 Around the buoy courses will be as depicted on addendum "A" showing the approximate angles between legs, the order of rounding, and the side on which each mark is to be left. The designation shall consist of two letters.
- 8.2 The course for a distance race will be displayed as numbers designating government navigation or First Coast Sailing Association marks as depicted in addendum B . An orange inflatable mark set to windward as a windward mark will be designated as "W."
- 8.3 The course for each class will be displayed on a white board located aft on non-course side of the committee boat.
- 8.4 If the Race Committee sets a gate instead of the Leeward Mark , boats shall sail between marks forming the gate from the direction of the last mark and round either the port mark leaving it to port or the starboard mark leaving it to starboard.
- 8.5 If the Race Committee sets an offset mark in the vicinity of the windward mark, boats shall sail around both marks leaving them on the prescribed side.

9 MARKS

Marks 1, 2S, and 2P will be yellow cylinders. Mark 1L will be an orange cylinder. Mark 1L offset, if set, will be a yellow tetrahedron. A new mark laid in accordance with Change of Course procedures will be an orange cylinder.

The start mark will be small orange sphere and the finish mark will be a small white sphere.

10 START

- 10.1 The Starting Line will be a line between an orange flag flown on the Race Committee/Signal Boat and a mark set toward the left side of the course from the Committee Boat relative to the first leg of the course.
- 10.2 Boats whose warning signal has not been made shall avoid the starting area.
- 10.3 A boat crossing the start line, as if to start, later than 5 minutes after her starting signal will be scored "Did Not Start." This changes RRS A4.

11. CHANGE OF COURSE AFTER THE START

To change the position of the next mark, the race committee will move the original mark (or the finishing line) to a new position. The change will be signaled before the leading boat has begun the leg, although the mark may not yet be in the new position. Any mark to be rounded after rounding the moved mark may be relocated without further signaling to maintain the course configuration.

12 THE FINISH

The Finish Line will be between an orange flag flown on the Race Committee/Signal Boat and a mark set toward the left side of the course from the Committee Boat relative to the final leg of the course (opposite side of the committee boat from the starting line). This is to accommodate conducting starts for some classes while others are finishing.

13 TIME LIMIT

The time limit for the first boat in each one design, round-the-buoy class to finish is 90 minutes from her start. The time limit for the first boat in each Portsmouth and PHRF, roundthe-buoy, class to finish is 90 minutes. One design boats failing to finish within 30 minutes time of the first boat in their class will be scored Did Not Finish. Portsmouth and PHRF boats failing to finish within 30 minutes corrected time of the first boat in their class will be scored Did Not Finish. This changes rules 35

and A4.1. The time limit for PHRF boats racing a distance river race around navigation buoys is 180 minutes.

14 PROTESTS AND REQUESTS FOR REDRESS

- 14.1 Protests shall be written on forms available at the Rudder Club or the US SAILING Web Site. They shall be filed with the Protest Committee. Protest time will end 90 minutes after the last boat has finished the last race of the day. Protests will be heard in the approximate order received.
- 14.2 Protest notices will be posted on the electronic and physical Official Bulletin Boards within 30 minutes following the protest time limit.
- 14.3 Appendix T of the RRS, Arbitration, is in effect.

15 SAFETY

- 15.1 On the first race of each day, boats shall attempt to check in with the Race Committee by sailing past the committee boat on the non-course side prior to their class Warning Signal.
- 15.2 Boats withdrawing from a race prior to finishing a race or retiring before racing has ended for the day shall make every effort to ensure that Race Committee is notified that they have dropped out
- 15.3 All competitors are required to conform to the U.S. Coast Guard regulations and the RRS concerning personal floatation devices and other required equipment.
- 15.4 Boats shall not impede the passage of a vessel which can safely navigate only within a narrow channel, and give way to commercial fishing vessels while fishing or vessels with restricted ability to maneuver.
- 15.5 In accordance with RRS 42.3(i), providing no significant advantage is gained, a boat may employ propulsion using an engine or other method to remain clear of or not impede the passage of a vessel restricted in its ability to maneuver when required by the Inland Rules.

16 SCORING

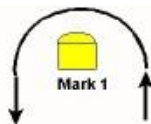
The Low Point Scoring System of appendix A will apply. PHRF classes will be scored PHRF time on time. Open classes will be scored in accordance with the Portsmouth Yardstick (HC) System. One race must be completed to constitute a

series. A boat's series score will be the total of her race scores. If 6 races are completed a boat's worst score will be discarded.

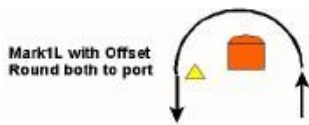
17 PRIZES

First, second, and third place prizes will be awarded in classes of more than five finishing yachts. First and second place prizes will be awarded in classes of four to five finishing yachts. A first place prize will be awarded in classes of three or less finishing yachts. One design prizes will be awarded on Sunday 15 March.

Round –the-Buoy Courses (Attachment A)

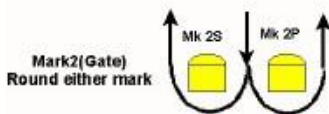


Not to Scale

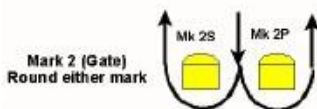


Mark 1
Not a mark of the course

Not to Scale



Mark2(Gate)
Round either mark



Mark 2 (Gate)
Round either mark



Windward Leeward Short

WS

Course Start, 1, 2P or 2S, 1, Finish



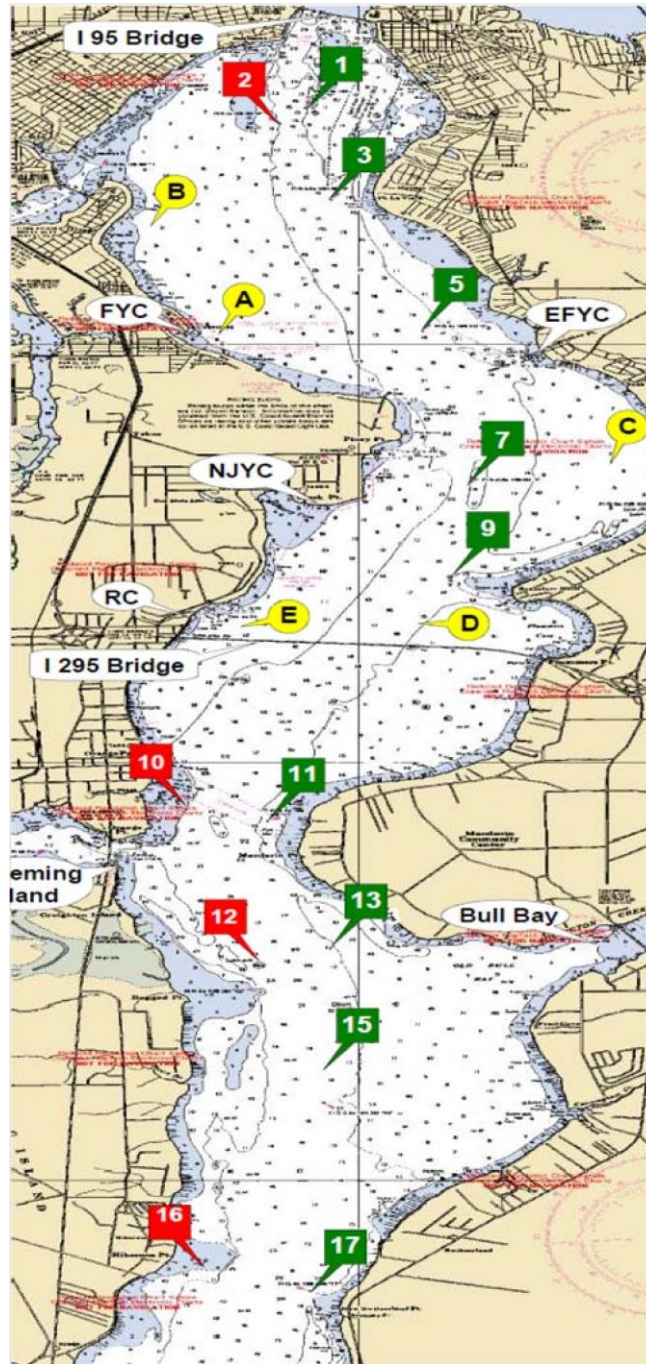
Windward Leeward Long

WL

Course Start, 1L, 2P or 2S, 1L, Finish

First Coast Sailing Association Race Marks

Distance	nm
1 to 3	1.039
1 to 5	2.787
1 to 7	4.643
1 to A	2.793
1 to B	1.570
3 to 5	1.773
3 to 7	3.615
3 to 9	4.638
3 to A	1.829
3 to B	1.126
3 to C	3.763
5 to 7	1.863
5 to 9	2.926
5 to A	1.468
5 to B	2.299
5 to C	2.029
5 to D	3.486
7 to 9	1.095
7 to C	0.977
7 to D	1.697
7 to E	2.240
9 to C	1.726
9 to D	0.618
9 to E	1.486
A to B	1.523
A to C	3.140
B to C	4.303
C to D	2.328
C to E	3.111
D to E	1.127
11 to 13	2.317
11 to 15	3.400
11 to 17	5.631
11 to 17A	6.836
13 to 15	1.109
13 to 17	3.360
13 to 17A	4.575
13 to 18	5.585
15 to 17	2.252
15 to 17A	3.467
15 to 18	4.476
17 to 17A	1.216
17 to 18	2.225
17A to 18	1.010
18 to 20	2.038



- Green 1
N 30° 17.813
W 81° 40.411
- Red 2
N 30° 17.628
W 81° 40.635
- Green 3
N 30° 16.780
W 81° 40.259
- Green 5
N 30° 15.142
W 81° 39.466
- Green 7
N 30° 13.305
W 81° 39.077
- Green 9
N 30° 12.216
W 81° 39.237
- Red 10
N 30° 09.513
W 81° 41.399
- Green 11
N 30° 09.305
W 81° 40.794
- Red 12
N 30° 07.240
W 81° 40.800
- Green 13
N 30° 07.036
W 81° 40.224
- Green 15
N 30° 05.926
W 81° 40.263
- Red 16
N 30° 04.038
W 81° 41.254
- Green 17
N 30° 03.671
W 81° 40.393
- Green 17A
N 30° 02.457
W 81° 40.522
- Red 18
N 30° 01.445
W 81° 40.551
- Green 19
N 30° 01.335
W 81° 40.279
- Red 20
N 29° 59.822
W 81° 39.126

****Note: If set these marks will be an inflatable mark.**

- Race Mark "A"
N 30° 15.090 W 81° 41.160
- Race Mark "B"
N 30° 11.648 W 81° 39.522
- Race Mark "C"
N 30° 13.564 W 81° 37.989
- Race Mark "D"

N 30° 16.581 W 81° 41.539

Race Mark "E"

N30° 11.648 W 81° 40.822

Race Mark "7T"

N N30° 13.305 W 81° 39.077