

**THE LABOR DAY REGATTA**  
**5 - 6 September 2020**  
**The Rudder Club of Jacksonville**  
**8533 Malaga Avenue Jacksonville, FL 32244, USA**

**ONE DESIGN AND PORTSMOUTH SAILING INSTRUCTIONS**

**1 RULES**

1.1 The regatta will be governed by the rules as defined in the current *Racing Rules of Sailing* (RRS).

1.2 US SAILING Prescriptions will apply

**2 NOTICES TO COMPETITORS** Official notices to competitors will be posted on the notice board located on the north exterior wall of the Rudder Club. Notices may in addition be published on the event web site at

<https://www.regattanetwork.com/event/20214>

**3 CHANGES IN THE SAILING INSTRUCTIONS** Any change in the Sailing Instructions will be posted on the Official Bulletin Board on the Rudder Club north wall prior 1100 5 September and may in addition be published on the Event Web Site at <https://www.regattanetwork.com/event/42214> Any change to the schedule of races will be posted by 2000 on the day before it will take effect. Oral changes may be made on the water and will be communicated to each boat prior to her warning signal.

**4 SIGNALS MADE ASHORE**

4.1 Signals made ashore will be displayed from the flag pole located on the north side of the Rudder Club.

4.2 When AP is displayed ashore "1 minute" is replaced with "not less than 45 minutes" in the race signal AP.

**5 SCHEDULE OF RACES**

5.1 Five races are scheduled.

5.2 Class divisions shall be posted on the Official Bulletin Board.

5.3 Schedule: SATURDAY, 5 September - One design and Portsmouth classes -Three races.

1000 – 1130: Late registration 1140:

Competitors' meeting

1255: Warning signal for first class SUNDAY 6 September - One design and Portsmouth classes -.

Two races

Warning signal for first class 0955.

There will be no Competitor's Meeting on Sunday.

**6 CLASS FLAGS** Class flags will be the International Numeral Pennants as depicted under Race Signals in the RRS.

**7 RACING AREA** The racing area will be on the St. Johns River between the Buckman Bridge to the south and the Fuller Warren Bridge to the north as depicted on NOAA Chart 11492.

Class		Pennant
Portsmouth Multihull	P1	
Hobie 16	P2	
Hobie 18	P3	
Flying Scot	P4	
Laser	P5	
Thistle	P6	
Pico	P8	
Portsmouth Monohull	P9	
Spare	P0	

**8 THE COURSE**

8.1 Courses will be as depicted in Attachment A and indicate the approximate angles between legs, the order of rounding, and the side on which each mark is to be left.

8.2 The course for each class will be displayed on a

white board located on the starting line side of the committee boat. The designation shall consist of two letters designating the course. The letter designations and the mark sequences are as set forth in Attachment A.

8.3 If the Race Committee sets a gate instead of the Leeward Mark, boats shall sail between marks forming the gate from the direction of the last mark and round either the port mark leaving it to port or the starboard mark leaving it to starboard.

8.4 If the Race Committee sets an offset mark in the vicinity of the windward mark, boats shall sail around both marks leaving them on the prescribed side.

**9 MARKS** 1, 2S, and 2P will be yellow cylinders. Mark 1L will be an orange cylinder. Mark 1L off-set will be a yellow tetrahedron. A new mark laid in accordance with Change of Course procedures will be an orange cylinder. The start mark will be small orange sphere and the finish mark will be a small white sphere.

## **10 START**

- 10.1 The Starting Line will be a line between an orange flag flown on the Race Committee/Signal Boat and an orange inflated sphere set toward the left side of the course from the Committee Boat relative to the first leg of the course.
- 10.2 Boats whose warning signal has not been made shall avoid the starting area during the starting sequence of other classes.

**11 CHANGE OF COURSE AFTER THE START** To change the position of the next mark, the race committee will move the original mark (or the finishing line) to a new position. The change will be signaled before the leading boat has begun that leg, although the mark may not yet be in the new position. Any mark to be rounded after rounding the moved mark may be relocated without further signaling to maintain the course configuration.

**12 THE FINISH** The Finish Line will be between an orange flag flown on the Race Committee/Signal Boat and a white sphere set toward the left side of the course from the Committee Boat relative to the final leg of the course, (Opposite side of the committee boat from the starting line.) This is to accommodate conducting starts for some classes while others are finishing.

**13 TIME LIMIT** The time limit for the first boat in each starting class to finish is 90 minutes from her start.

## **14 PROTESTS AND REQUESTS FOR REDRESS**

14.1 Protests shall be written on forms available at the Rudder Club. They shall be filed with the Regatta Chairman. Protest time will end 90 minutes after the last boat has finished the last race of the day. Protests will be heard in the approximate order received.

14.2 Protest notices will be posted on the Official Bulletin Board within 30 minutes following the protest time limit.

14.3 RRS Appendix T, Arbitration, is in effect.

**15 SCORING** The Low Point Scoring System of appendix A will apply. Portsmouth classes will be scored in accordance with the Portsmouth Yardstick System. One race must be completed to constitute a series. A boat's series score will be the total of her race scores. When six or more races have been completed, a boat's series score will be the total of her race scores excluding her worst score.

## **16 SAFETY**

16.1 Boats shall attempt to check in with the Race Committee by sailing past the committee boat on the non-course side prior to their class Warning Signal.

16.2 Boats withdrawing from a race prior to finishing shall make every effort to ensure that Race Committee is notified that they have dropped out

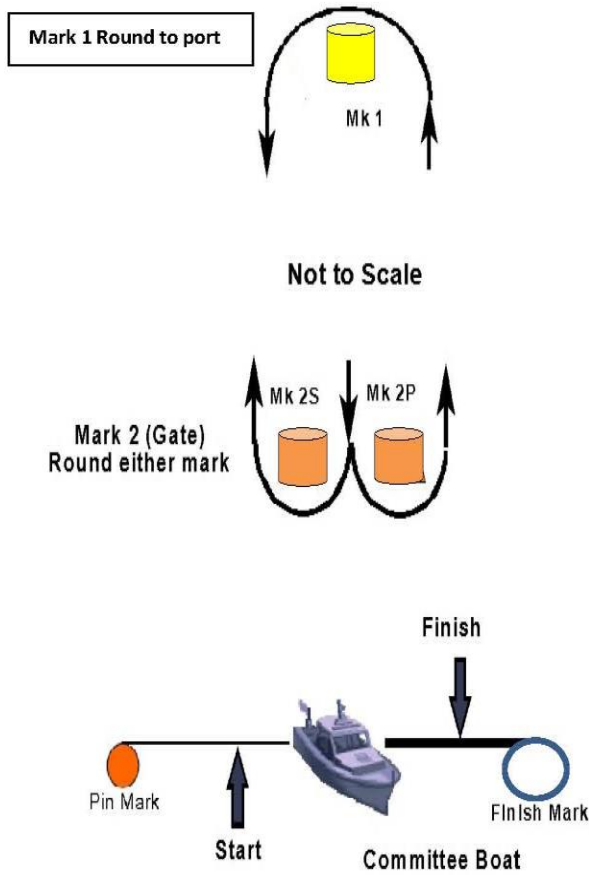
16.3 All competitors are required to conform to the U.S. Coast Guard regulations and the RRS concerning personal floatation devices and other required equipment.

16.4 Boats shall not impede the passage of a vessel which can safely navigate only within a narrow channel, and give way to commercial fishing vessels while fishing or vessels with restricted ability to maneuver.

16.5 In accordance with Rule 42.3(i), providing no significant advantage is gained, a boat may employ propulsion using an engine or another method to remain clear of a non-racing vessel when required by Inland Rules.

**17 PRIZES** First, second, and third place prizes will be awarded in classes of more than five finishing yachts. First and second place prizes will be awarded in classes of four to five finishing yachts. A first-place prize will be awarded in classes of three or less finishing yachts. One design prize will be awarded on Sunday 6 September.

## Round –the-Buoy Courses (Attachment A)

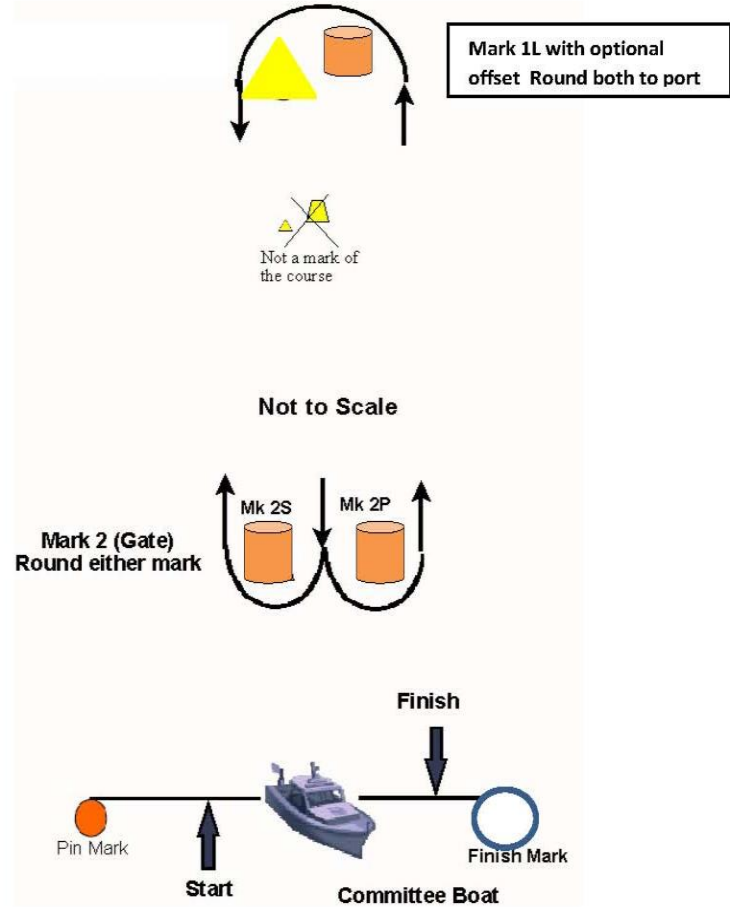


### Windward Leeward Short

# WS

**Course: Start, 1, 2P or Course Start, 1L, 2P or 2S, 2S, 1, Finish 1L, Finish**

**NOTE: Offset marks and gates are optional.**

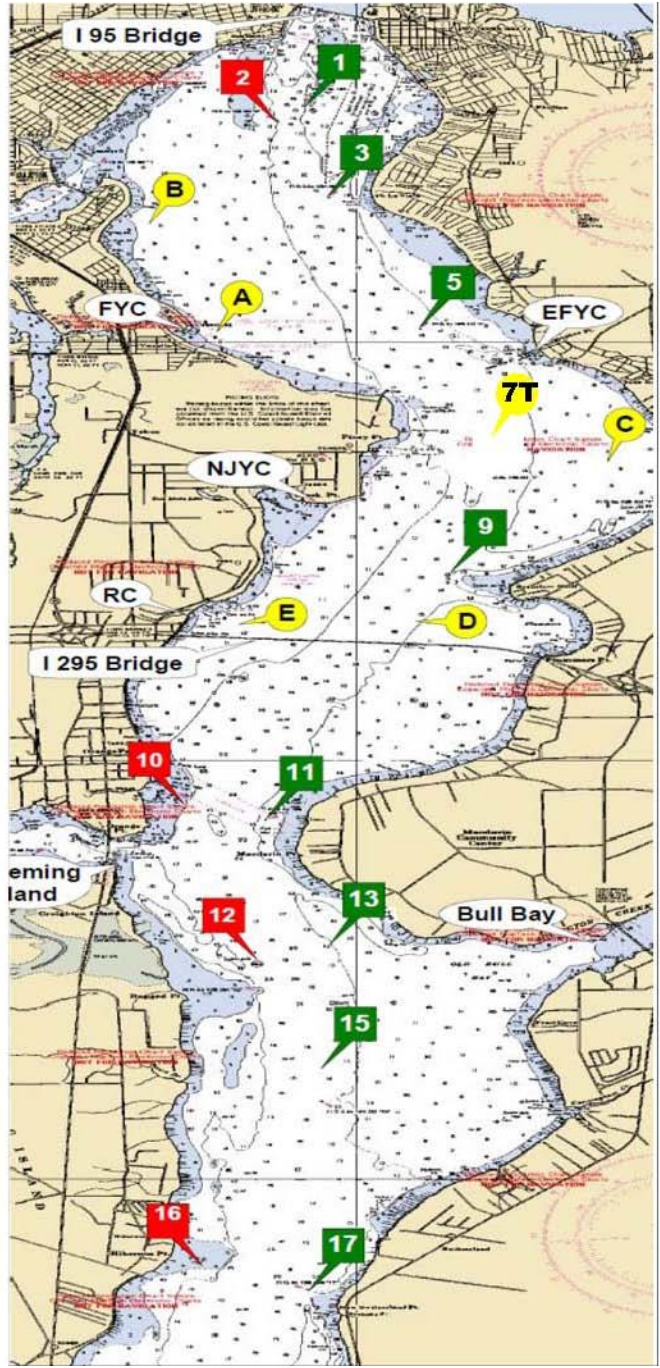


### Windward Leeward Long

# WL

**Attachment A**

Distance	nm
1 to 3	1.039
1 to 5	2.787
1 to 7T	4.643
1 to A	2.793
1 to B	1.570
3 to 5	1.773
3 to 7T	3.615
3 to 9	4.638
3 to A	1.829
3 to B	1.126
3 to C	3.763
5 to 7T	1.863
5 to 9	2.926
5 to A	1.468
5 to B	2.299
5 to C	2.029
5 to D	3.486
7 to 9	1.095
7 to C	0.977
7 to D	1.697
7 to E	2.240
9 to C	1.726
9 to D	0.618
9 to E	1.486
A to B	1.523
A to C	3.140
B to C	4.303
C to D	2.328
C to E	3.111
D to E	1.127
11 to 13	2.317
11 to 15	3.400
11 to 17	5.631
11 to 17A	6.836
13 to 15	1.109
13 to 17	3.360
13 to 17A	4.575
13 to 18	5.585
15 to 17	2.252
15 to 17A	3.467
15 to 18	4.476
17 to 17A	1.216
17 to 18	2.225
17A to 18	1.010
18 to 20	2.038



- Green 1  
N 30° 17.813  
W 81° 40.411
- Red 2  
N 30° 17.628  
W 81° 40.635
- Green 3  
N 30° 16.780  
W 81° 40.259
- Green 5  
N 30° 15.142  
W 81° 39.466
- See Race Mark "7T"  
N 30° 13.305  
W 81° 39.077
- Green 9  
N 30° 12.216  
W 81° 39.237
- Red 10  
N 30° 09.513  
W 81° 41.399
- Green 11  
N 30° 09.305  
W 81° 40.794
- Red 12  
N 30° 07.240  
W 81° 40.800
- Green 13  
N 30° 07.036  
W 81° 40.224
- Green 15  
N 30° 05.926  
W 81° 40.263
- Red 16  
N 30° 04.038  
W 81° 41.254
- Green 17  
N 30° 03.671  
W 81° 40.393
- Green 17A  
N 30° 02.457  
W 81° 40.522
- Red 18  
N 30° 01.445  
W 81° 40.551
- Green 19  
N 30° 01.335  
W 81° 40.279
- Red 20  
N 29° 59.822  
W 81° 39.126

**First Coast Sailing Association Race Marks**

**\*\*Note: If set these marks will be an inflatable mark. Race Mark "A"**  
 N 30° 15.090 W 81° 41.160  
**Race Mark "B"**  
 N 30° 11.648 W 81° 39.522  
**Race Mark "C"**  
 N 30° 13.564 W 81° 37.989  
**Race Mark "D"**  
 N 30° 16.581 W 81° 41.539  
**Race Mark "E"**  
 N30° 11.648 W 81° 40.822 Race Mark "7T" N 30° 13.305 W 81° 39.077