
A LOCAL GATHERING SPOT
ESTABLISHED 2017



75 PLEASANT ST. PORTSMOUTH
NH 03801 T: 603-501-0109

2019 Commodore's Cup Series



Sailing Instructions

Ron Gibbons Memorial Regatta July 11, 2020

Whaleback Regatta July 25, 2020

Singlehanded Regatta August 22, 2020

Dave Mowers Memorial Regatta September 12, 2020

Lobster Regatta August 19, 2020

Organizing Authority – Piscataqua Sailing Association, Kittery Point Yacht Club, and
Portsmouth Yacht Club, New Castle New Hampshire 03854

1. **Rules.** Racing will be governed by The Racing Rules of Sailing 2017-2020 (RRS), the prescriptions of US SAILING, the Notice of Race and this Sailing Instructions, and the rules of applicable Class Associations (except as altered by the Notice of Race and these Sailing Instructions).
2. **Changes to the Notice of Race and these Sailing Instructions.** Any change to the Notice of Race and these Sailing Instructions will be made at the skippers meeting or through hails made on VHF Channel 68 prior to the first Warning Sound the day of the race.
3. **Class Flags.**
 - 3.1 Colored flags and class association flags shall identify each class start and shall be displayed from the backstay while racing.
 - 3.1.1 A Fleet: Class flag is "F" (Red Diamond on White) – PHRF racing boats
 - 3.1.2 B Fleet: Class flag is "D" (Blue Line on Yellow) – PHRF cruising boats (non-spinnaker)
 - 3.1.3 J24 Class association flag, display of class flag not required on backstay
 - 3.1.4 One Design Class association flag, display of class flag not required on backstay
 - 3.2 The decision as to what class a boat shall race under rests solely with the Race Committee.
 - 3.3 Race Committee has the option of starting all boats together and will indicate such a start by raising a White Flag at the warning signal. Such starts will score ALL competing boats using PHRF handicaps and will consider the one start one race. Race Committee may run more than one race. Should three (3) or more boats in the same class be started in such a race, Race Committee may score those boats separately at Race Committee's discretion

4. Check in Before Start.

- 4.1. Once the Race Committee Boat is on station at the starting line, a boat is required to check in either by leaving the stern of the Race Committee Boat to starboard and verbally stating the boats sail number and class prior to her warning signal or hailing Race Committee on VHF 68 and identifying herself by sail number and class prior to her warning signal. Race Committee will acknowledge by responding with the boats sail number heard and only then will the boat be properly checked in.
- 4.2. Boats that withdraw from a race or decide not to start, **SHALL** advise Race Committee as soon as reasonably possible on VHF Channel 68.
- 4.3. Sail numbers shall determine a boat's identification.
- 4.4. For the Dave Mowers Memorial Regatta there will be no RC Boat check in will be at the PYC dock which will be the RC side of the starting line.

5. The Start.

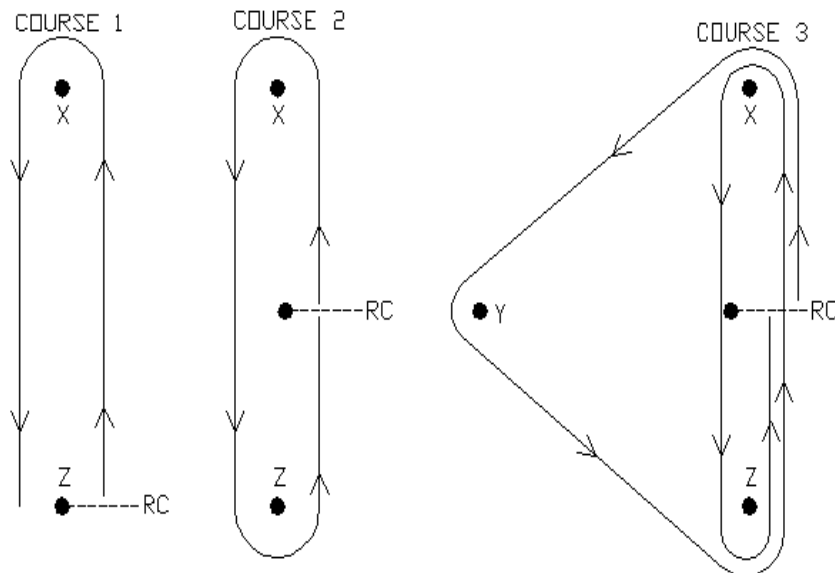
- 5.1. Races will be started using RRS 26. First warning will be at 11:55.
- 5.2. The race will be started in the following order:
 - 5.2.1. B Fleet: "D" flag – PHRF cruising boats (non-spinnaker)
 - 5.2.2. A Fleet: "F" flag – PHRF racing boats
 - 5.2.3. One Design Fleet: Class association flag
 - 5.2.4. J-24 Fleet: J/24 Class association flag
- 5.3. The race shall be started by using the following signal. Times shall be taken from the visual signals; the absence of a sound signal shall be disregarded.
 - 5.3.1. Attention signal, a series of short sounds and a VHF 68 announcement approximately **6 minutes** prior to the start.
 - 5.3.2. Warning: Class flag displayed and 1 sound **5 minutes** prior to the start.
 - 5.3.3. Preparatory; P flag displayed, 1 sound **4 minutes** prior to the start.
 - 5.3.4. P flag removed, one long sound, **1 minute** prior to the start.
 - 5.3.5. Class flag removed, 1 sound, the race has started
 - 5.3.6. Pursuit Races yachts will be assigned starting times.
- 5.4. The attention signal for each succeeding class will be made shortly after the preceding class has cleared the line.
- 5.5. The starting line will be between the red post on the Race Committee Boat on the starboard end of the line and the nearest mark on the port end of the line.
- 5.6. Boats whose preparatory signal has not been made shall remain well clear of the starting area and of all boats whose preparatory signal has been made.
- 5.7. The Race Committee may deploy a small orange inflatable buoy at a distance of eight to ten feet from the transom of the committee boat, the purpose of which will be to keep starting boats well clear of the Committee Boat. Such a buoy and its painter, if deployed, will be deemed to be an extension of the Race Committee Boat.
- 5.8. The start will be in the vicinity of the 2KR buoy Dave Mowers Regatta will be at the PYC dock.

6. The Course.

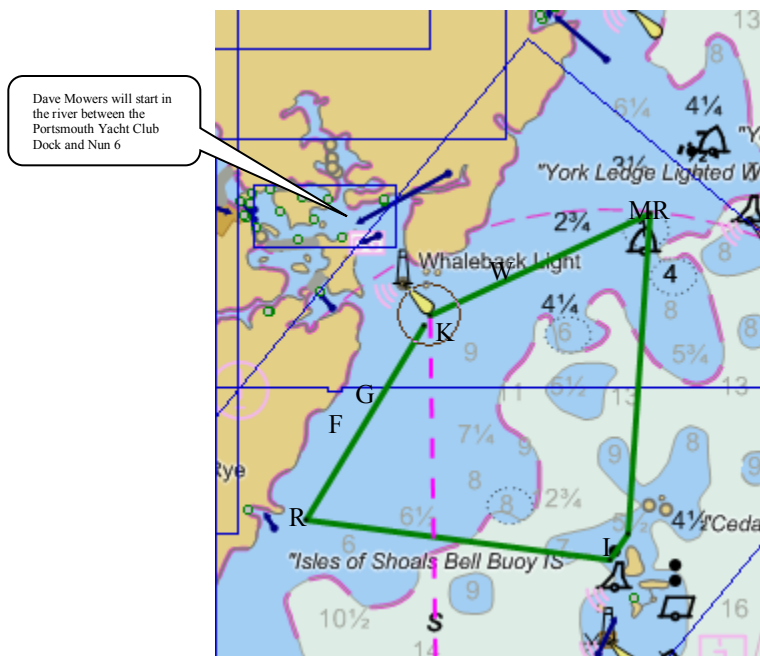
- 6.1. Ocean courses may use an initial windward gate. Boats must sail through the gate before the ocean leg of the course. The gate will be designated as "X" if inflatable marks are used or by the designated letter of a government aid, for example the designation XA would mean a windward gate of two inflatable marks through which the boats must pass prior to sailing the designated course in either direction. The approximate magnetic bearing and distance of a gate consisting of inflatable marks from the start will be displayed on the Race committee boat. See 6.8 for mark designations.
- 6.2. Courses utilizing inflatable marks are shown in Illustration A. Each course is assigned an identifying numeral and all rounding's are to be left to port as shown in each diagram. The approximate magnetic bearing and distance from the leeward mark, Mark Z, to the windward mark, Mark X, will be displayed on the Race Committee signal boat.

- 6.3. Courses using inflatable marks and government aids to navigation may be used. These courses will be displayed on the Race Committee signal boat with letters identifying marks to be passed in the order of their passing. Either a red or green signal will be displayed after the letters indicating a port or starboard rounding, RRS 28.1 shall apply. See 6.8 for mark designations.
- 6.4. Courses shall be sailed once around if there is no numeral following the course designation. Courses to be sailed twice, or even three times around, will be signaled as such with the appropriate numeral following the course designation.
- 6.5. **In All Courses.** The Start / Finish Line is restricted except for the act of either starting or finishing a race, exception being when the port end of the Line is listed as a mark of a course utilizing government marks. Boats crossing the Start / Finish Line while not starting or finishing, and not exonerating themselves by going back around an end, shall be scored as DNF.
- 6.6. Courses for each division or class will be posted conspicuously on the Race Committee signal boat prior to that division or class's warning signal and will be announced on VHF 68.
- 6.7. Government aids to navigation shall be identified as follows:
 - 6.7.1. "K" R "2KR" Fl R 2.5s WHIS Kitts Rocks
 - 6.7.2. "L" R Nun "2" Little Harbor
 - 6.7.3. "G" G "1" Fl G 4s Gunboat Shoal
 - 6.7.4. "F" C "1A" Foss Ledges
 - 6.7.5. "R" RW "RH" Mo(A) WHIS Rye Harbor
 - 6.7.6. "I" RW Bell "IS" at the Isle of Shoals.
 - 6.7.7. "MR" Murry's Rock
 - 6.7.8. "W" R "2" Fl R 4s (North/North West of Whaleback Light)
 - 6.7.9. "YL" 24YL York Ledge Whistle Buoy
 - 6.7.10. "X" Windward Inflatable
 - 6.7.11. "Z" Leeward Inflatable
 - 6.7.12. "Y" Wing (Reach) Mark Inflatable

Illustration A



**Sailing Course Area
Illustration B**



7. **Recalls.** Individual and General Recalls will be handled in accordance with RRS 29.2 and RRS 29.3 - individual premature starters will be hailed by sail number on VHF 68. Failure to hear the hail or any issues arising from order of the hails will not be grounds for redress.
8. **Change of Course after the Start.** A change of course after the start will be signaled before the leading boat has begun the leg, although the new mark **may** not be in position. Any mark to be rounded may be relocated to maintain the original course configuration, after all the boats on that leg have completed it.
9. **Abandonment or Shorten Course.** Race Committee may abandon the race or shorten course for any reason.
10. **The Finish.** The finish line will be between the red post on the Race Committee signal boat and the nearby mark.
 - 10.1. Dave Mowers Memorial Regatta the finish line will be between the PYC dock flag pole and the red nun number 6.
11. **Number of Races.** A & B fleet will have one race if an ocean course is selected or may have multiple races if around the buoys format is chosen.
12. **Time Limit.** If any boat in her class has finished by 17:00 hours, it is a race for that entire class. If no boat in a class has finished by the prescribed time, the race is to be considered abandoned, RRS 35, with no plan to re-sail. The race committee reserves the right to finish boats in place should conditions warrant.
13. **Singlehanded Regatta:**
 - 13.1. **Crew Limit.** A yacht shall be crewed by the skipper only during the race. No other person is allowed to be aboard the yacht.
 - 13.2. **Autopilots and Power Winches.** Use of autopilots and power winches are permitted.
 - 13.3. **Laser Regatta** – Will be held in Pepperell Cove Anchorage off Fort McClary. See separate NOR and SI for details

14. Lobster Double Handed Regatta:

14.1. **Crew Limit:** A yacht shall be crewed by the skipper and a mate only during the race. No other person is allowed to be aboard the yacht. (this is a two claw race)

15. Protests. Protests will be in accordance with RRS 61 except as follows:

15.1. Boats intending to protest will, after finishing or retiring, notify Race Committee at the finishing line of the sail number of the protested boat. A boat that has retired may notify Race Committee ashore if unable to do so, on the water.

15.2. Protest filing.

15.2.1. Protests must be in writing and delivered to the chairman of the race committee within one hour of the arrival of the committee at the KPYC.

15.2.2. The Protest Committee will not accept all protests that do not meet the requirements of 13.2.1.

15.2.3. Upon receipt of a valid protest, the Protest Committee will contact the interested parties to schedule a protest hearing. The hearing will be held the as soon as practical the evening of the race at the KPYC.

15.3. Boats intending to protest must conspicuously display the "B" (Red) flag from the backstay at the first reasonable opportunity.

16. Scoring. The Low Point Scoring System, RRS A2 & A4 will apply, except as modified herein. PHRF boats will be scored using Time on Time, TOT, as prescribed in the [New England PHRF guidelines](#) taking in weather conditions

16.1. A race will only be started and scored for a class or division in which three (3) or more boats start.

16.2. In order to qualify for the Commodore's Cup yachts must compete in three (3) of the five (5) regattas scheduled for the series, the two (2) lowest scores of the five (5) races will be excluded. Once a yacht has declared a class for its first race in the series it will not be allowed to change classes for any additional race in the series.

16.3. Tie Breaker: In the event of a tie after the top three (3) races have been scored for each yacht the committee will score the top four (4) races for each yacht, if a tie still exist the committee will score all five (5) races to determine the winner. In the event a tie still exists after all five (5) races have been scored the committee will resort to US Sailing Rule A8(1,2)

17. Radio Communication and Emergency Conditions.

17.1. Except in an emergency, a boat shall not make or receive radio communications not available to all boats while racing. This restriction also applies to mobile telephones.

17.2. The Race Committee will utilize Channel 68 VHF for communications with competing boats for race information, change of course, etc. Failure to do so shall not be grounds for redress.

17.3. Boats shall monitor VHF Channel 68.

17.4. Emergency conditions will be reported directly to Race Committee on VHF 68. Boats in need of assistance will further contact necessary authorities on channel 16.

18. Safety.

18.1. All commercial traffic in the channel should be considered "Restricted in Ability to Maneuver," as defined in Rule 18 of The International Regulations for Avoiding Collisions at Sea (COLREGS), and as such, have the right-of-way in all circumstances.

18.2. Boats will comply with RRS 1.2. Boats will conform to all government regulations. Class rules regarding safety requirements will apply as prescribed in section 1 of these sailing instructions.

18.3. All boats are required to have a GPS and VHF on board. GPS use during races is governed by class or fleet rules.

18.4. For the Singlehanded Regatta use of a personal flotation device (**PFD**) is required during the race.

18.5. Race Committee may abandon a race at any time before, during, or after the start for safety reasons, if it deems the situation too dangerous to continue and shall not be grounds for redress.

19. **Results.** Results will be announced at the awards ceremony at the KPYC / PYC the evening of the race and will be posted on the KPYC bulletin board, on www.KPYC.net, www.sailpsa.org and www.regattanetwork.com/event/20600.