



SAILING INSTRUCTIONS

The Wild Bill Rig Race

Saturday, June 27, 2020

**Channel Islands Yacht Club 805.985.2492
4100 S Harbor Blvd, Oxnard, CA 93035**

1. RULES

This race will be governed by the *2017-2020 Racing Rules of Sailing (RRS)*. *In light of the ongoing COVID-19 pandemic, racers are strongly encouraged to follow state and local guidelines for social distancing and group size in effect at the time of the race (eg, currently 6ft between non-household members as well as mask, buff, or bandana over the nose and mouth when closer than 6ft; group size of 5 or fewer non-household members).*

2. NOTICES TO COMPETITORS

The Notice of Race (NOR), Registration, and Payment of Entry Fees are available online on Regatta Network (<https://www.regattanetwork.com/event/20851>). The Sailing Instructions (SIs) and race results will also be posted on this event page. Any changes to the NOR or SIs will be posted online prior to the Virtual Skippers Meeting. Subsequent changes, if any, will be provided to all competitors during the Skippers Meeting and/or announced on the water, prior to the start. No pre-race signals will be made ashore.

3. SCHEDULE: Saturday, June 27, 2020

0830 Virtual Skippers Meeting via Zoom. Click on the following link:

<https://us02web.zoom.us/j/3996134278?pwd=YlVJeENmNDc4S1hYOVFVWm11MkZKQT09>

Meeting ID: 399 613 4278 Password: 9Lfakk

1055 Planned 5-minute warning signal for first start at 1100

TBD Possible post-race meal and awards presentation at CIYC - Details to be provided no later than the Virtual Skippers Meeting

3. CLASSES

- a. PHRF Spinnaker and Nonspinnaker classes are welcome to participate. Class breaks will be announced at the Virtual Skippers Meeting.
- b. Class Flags will be numeral pennants:
 - 1 Spinnaker
 - 2 Non Spinnaker

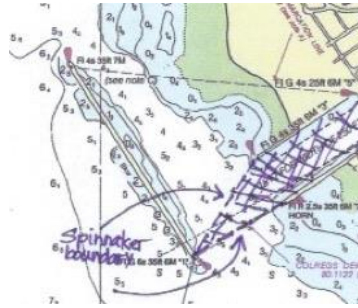
4. THE START

- a. The races will be started using Rule 26. The order of class starts will be announced at the Skippers Meeting.
- b. Prior to her start, each boat shall check in with the RC by radio (VHF Channel 71) or by hailing the RC boat
- c. After the first class has started, the RC may allow a 1-minute gap between the starting signal of one class and the warning signal of the next class
- d. The port end of the starting line will be the Mandalay spar buoy and the starboard end will be designated by an orange flag on the RC boat

- e. Boats whose warning signal has not been made shall avoid the starting area during the starting sequence for other classes

5. THE FINISH

- a. When the first boat to finish is approximately 30 minutes from the Channel Islands Harbor entrance, the RC requests to be notified (VHF Channel 71 or PRO's cell, 805.822.7544) to assure that the RC is on station when boats finish
- b. Spinnakers must be doused prior to entering the area between the southern end of the detached breakwater (Green #1) and either attached jetty (the line between Green #1 and Green #3 when entering from the north or the line between Green #1 and Red #2 when entering from the south). Any boat sailing beyond this point with a spinnaker set will be scored DSQ by the RC. This changes Rules 63.1 and A5.



- c. The port end of the finish line begins at the CIYC flagpole (N 34°09.8' W 119°13.5') and extends to a lone palm tree (near the launch ramp across the harbor) on a bearing of approximately 052°M. The RC will acknowledge each boat's finish with a horn blast.
- d. A boat that starts but subsequently retires without finishing is asked to notify the RC at her earliest opportunity (VHF Channel 71 or the PRO's cell, 805.822.7544).

6. THE COURSES

- a. The courses will be chosen from the 2020 Wild Bill Rig Race Course Chart, which is part of these Sailing Instructions
- b. When an oil platform is a mark of the course, its associated mooring buoy(s) are also marks of the course.

7. HEADSAIL LIMITATIONS

- a. More than one headsail may be set and carried, and the headsails need not be attached to the forestay. This changes Rule 50.1.
- b. All headsails must comply with Rule 50.4.
- c. The use of a headsail larger than 155% LP will be penalized 6 seconds per mile unless the larger sail is already included in the boat's rating

- 8. **PROTESTS:** Protests shall be delivered to the RC within 1 hour of the finish of the protesting boat or within 1 hour of her return to her harbor if she retires. Protest forms are available online at US Sailing or at CIYC.

- 9. **SAFETY EQUIPMENT:** Each skipper is responsible for compliance with applicable US Sailing Safety Equipment Requirements for Nearshore. The RC reserves the right to disqualify nonconforming boats. All boats shall carry a VHF radio with Channels 16 and 71. The minimum number of persons aboard shall be 2. The RC will monitor VHF Channel 71 throughout the race.

- 10. **PRIZES:** It is hoped that CIYC will host a post-race meal and presentation of awards. Details will be provided no later than the Virtual Skippers Meeting. The Wild Bill Rig Race Perpetual Trophy will be engraved with the winners' names and classes and displayed at CIYC.

2020 WILD BILL RIG RACE - COURSE CHART

Course #	Distance (nm)	Race Mark Roundings	Approx Bearing to 1st Mark
1	8.5	S G3(p) Fc	170°M
2	12.5	S G3(p) B(s) Fc	170°M
3	14	S G1(p) Fc	220°M
4	16.2	S G1(p) G3(p) Fc	220°M
5	17.2	S G2(p) Fc	220°M
6	22.8	S G4(p) Fc	250°M

MARKS

APPROXIMATE LOCATION

A	Fish Sticks spar buoy	L: 34° 14.4'N; Lo: 119° 19.9'W
B	"WES" spar buoy	L: 34° 09.9'N; Lo: 119° 16.4'W
Fc	Channel Islands Harbor finish, see sailing instructions	
H	Hueneme buoy, R "2"	L: 34° 08.0'N; Lo: 119° 13.0'W
G1	Platform Gail	L: 34° 07.5'N; Lo: 119° 24.0'W
G2	Platform Gilda	L: 34° 10.9'N; Lo: 119° 25.1'W
G3	Platform Gina	L: 34° 07.0'N; Lo: 119° 16.6'W
G4	Platform Grace	L: 34° 10.8'N; Lo: 119° 28.1'W
M	Mandalay spar buoy	L: 34° 12.0'N; Lo: 119° 16.5'W
R2	Whistle buoy R "2" at Ventura Harbor	L: 34° 14.4'N; Lo: 119° 16.7'W
S	Start in vicinity of Mark M	

