

**HURRICANE CUP PURSUIT RACE**  
**SEPTEMBER 26, 2020**  
**SAILING INSTRUCTIONS**

**1. RULES**

**1.1** The race will be governed by the current Racing Rules of Sailing (RRS), with US SAILING Prescriptions, including Appendix V, except as changed by the Notice of Race or by these Sailing Instructions.

**1.2** All competitors are reminded of the importance of complying with all of the MA state guidelines for recreational boating businesses which include the [guidelines for Tournaments for Youth and Adult Amateur Sports Activities, effective August 17, 2020](#).

**1.3** All competitors are reminded of the importance of compliance with RRS 67.

**1.4** RRS 52 is amended as provided for under RRS 86.1(c) as follows: Competitors are permitted to use an autopilot and electrically-powered winches for running rigging while racing.

**1.5** Competitors in PHRF races are required to remove anchors from their bow pulpits while racing.

**2. NOTICES TO COMPETITORS/SCRATCH SHEETS**

**2.1** Notices to competitors will be posted on the Official Notice Board located on the BYC Racing web page.

**2.2** Changes to the Sailing Instructions or Schedule must be posted on the Official Notice Board at least 24 hours prior to the first scheduled warning signal. Changes to the Sailing Instructions, excluding the schedule of races, may also be posted on the Race Committee boat prior to the warning signal and after displaying signal flag "L" and a radio announcement by the Race Committee on VHF CH 72.

**2.3** Scratch sheets including start times will be available through the registrant's email, no later than 0900 on the day of the race.

**3. SIGNALS MADE ASHORE**

**3.1** Signals made ashore will be displayed from the BYC flagpole.

**3.2** Flag AP displayed ashore means "The races are postponed. The warning signal will be made not less than 60 minutes after AP is lowered." This changes RRS Race Signals AP.

**4. SCHEDULE OF RACE**

**4.1** The Hurricane Cup PHRF Pursuit Race will be held on September 26, 2020

**4.2** The scheduled time of the first warning signal is 1155.

**5. RACING AREA**

**5.1** The racing area will include Buzzards Bay.

**5.2** The start will be in the vicinity of Sippican Harbor Lighted Red Buoy "2" (F1 R) at Centerboard Shoal (BYC mark "G").

**5.3** A chart of possible marks and their descriptions is attached.

**6. COURSES**

The courses will be as described on the scratch sheet, or displayed on the committee boat.

## 7. START AND RECALLS

**7.1** The start will be in the vicinity of Sippican Harbor Lighted Red Buoy "2" (Fl R) at Centerboard Shoal (BYC mark "G"). The finish will be at Sippican Harbor Lighted Red Buoy "2" (Fl R) at Centerboard Shoal (BYC mark "G").

**7.2** After the initial warning signal, boats proceeding to the pre-start side are requested not to cross the start line from the course side to the pre-start side.

**7.3** Boats will be allocated a start from 12:00:00 relative to their handicap and those times will be listed on the scratch sheet.

**7.4** The first boat(s) to start will be allocated 12:00:00 and will start in accordance with RRS 26.

**7.5** Allocated times for subsequent starts may not necessarily be consecutive. For example:

Scheduled Start Time – 12:00	
Allocated Start time	Start Time
0:00:00	12:00:00hrs
0:05:00	12:05:00hrs
0:06:00	12:06:00hrs
0:10:00	12:10:00hrs
0:11:00	12:11:00hrs

**7.6** For subsequent boats, their preparatory signal and their one-minute signal shall be deemed to have been made at four minutes and at one minute respectively before their nominal starting time. Their starting signal will be the start time announced with a single sound. This changes RRS26.

**7.7** Boats not yet racing shall keep clear of boats that are racing and at least three boat lengths from the start line. If reasonably possible, a boat not racing shall not interfere with a boat that is racing.

### 7.8 Postponing Pursuit Races

**7.8.1** Postponement of pursuit races shall be in accordance with RRS 27.3.

**7.8.2** In the event of postponement, the starting minutes allocated will remain the same. Yachts will start at their allocated number of minutes after the rescheduled start time. The start sheet will not be reprinted. Yachts will be advised of the rescheduled start time via VHF Ch.72.

### 7.9 Individual recalls

**7.9.1** Boats starting early by one minute or more shall have that amount of time, which they would otherwise have saved, added to their elapsed time and then a further 10% time penalty added. No recall signal shall be made. This changes RRS 29.1.

**7.9.2** Boats starting early by less than one minute: The race committee shall promptly display code flag 'X' accompanied by one sound signal. The flag will be displayed for a period of 30 seconds or until all such boats have completely returned to the prestart side of the line by rounding one of the ends, whichever is earlier. A 10% elapsed time penalty shall apply to boats that fail to start correctly. This changes RRS 29.1.

#### **7.10 General recall**

There shall be no general recalls. This changes RRS 29.2

**7.11** A boat that starts later than 10 minutes after her starting signal will be scored Did Not Start without a hearing. This changes RRS 63.1, A4.1 and A5.

### **8. FINISHING**

**8.1** The finish line will be between the staff from which an orange flag is displayed on the signal boat and the course side of the nearby mark.

### **9. PENALTIES**

**9.1** RRS Appendix V will apply in its entirety. (This alters RRS 44.1)

### **10. TIME LIMITS**

**10.1** The Hurricane Cup PHRF Pursuit Race has a time limit of 5 hours.

### **11. PROTESTS AND REQUESTS FOR REDRESS**

**11.1** Protests and requests for redress shall be written on forms available on the BYC Racing webpage and in an envelope on the Bulletin Board on the porch at BYC. Completed protests should be emailed (or photographed and emailed) to <mailto:race@beverlyyachtclub.org> within two hours from the time when the race committee boat docks.

**11.2** Notices will be posted and emailed no later than 1800 on September 26, 2020 to inform competitors of hearings in which they are parties or named as witnesses and the time and location of that hearing.

**11.3** A boat requesting redress based on her scores shall do so by 1100 on September 27. This changes RRS 62.2.

### **12. SCORING**

**12.1** Boats will be scored using the system set out in RRS Appendix A.

**12.2** Scores will be posted on the Hurricane Cup site on Regatta Network.

### **13. SAFETY**

**13.1** When Flag L is displayed on the Race Committee signal boat before a warning signal, boats shall check in by sailing past the signal boat on starboard tack and hailing their numbers until acknowledged by the Race Committee.

**13.2** VHF CH 72 is the hailing channel for the Race Committee. The Race Committee will monitor VHF CH 72 and will provide safety information on VHF CH 72. As part of the BYC Racing Safety Plan, every competing boat is required to carry a VHF radio and to monitor VHF CH 72 from the preparatory

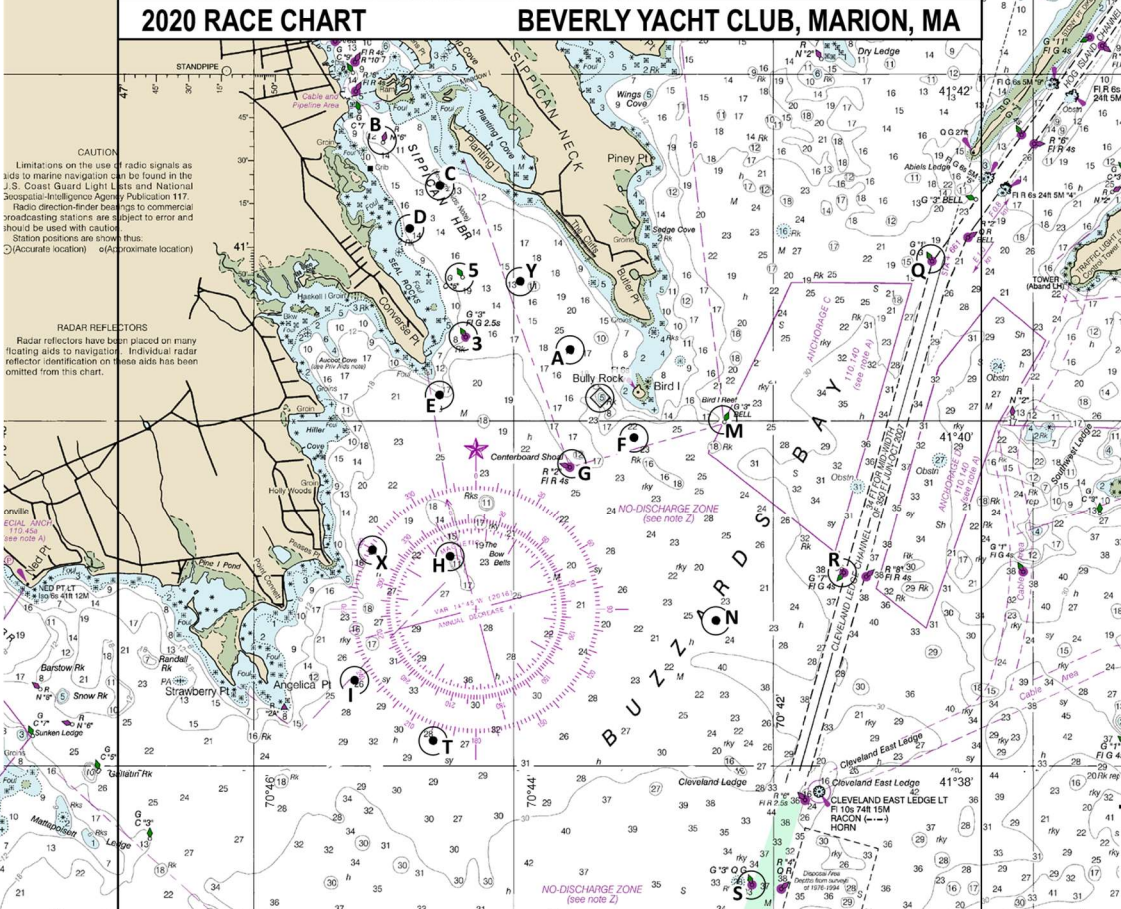
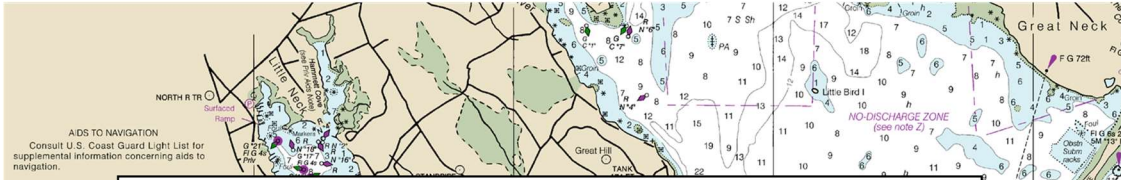
signal and while racing and shall notify the Race Committee on VHF CH 72 if they retire from racing.

**13.3** All competitors shall wear properly fastened, USCG approved personal flotation devices at all other times when on deck. This changes RRS 40.

**13.4** When flag V (Red X on White Background) is displayed not later than the warning signal spinnakers shall not be used.

**14. DISCLAIMER OF LIABILITY**

**14.1** Competitors participate in BYC series racing and special races entirely at their own risk. See RRS 4, Decision to Race. The organizing authority will not accept any liability for material damage or personal injury or death sustained in conjunction with or prior to, during, or after racing.



Nautical Miles

1    1/2    0    1    2

**THIS CHART IS NOT TO BE USED FOR NAVIGATIONAL PURPOSES.**

**Except when indicated as turning marks, all yachts must pass East of**

- - USCG Aid To Navigation
- - BYC Private Mark
- ⊙ - BYC Private Rock Marker

MARK	DESCRIPTION	MARK	DESCRIPTION
3	Sippican Harbor Lighted Green Buoy "3" (FI G 2.5s) East of	O	Portable Offset Turning Mark near Windward Turning Mark
5	Sippican Harbor Green Can "5" East of Seal Rocks	P	Portable Alternate Finish Line Pin directly on the opposite side of start
A	BYC Yellow Can "A" West of Butler Point	Q	Hog Island Channel lighted Green Buoy "1" (Q FI G) Southwest of
B	Sippican Harbor Red Nun "B" South of Ram Island	R	Cleveland Ledge Channel Lighted Green Gong "7" (FI G 4s)
C	BYC Yellow Can "C" West of Planting Island	S	Cleveland Ledge Channel Lighted Green Buoy "3" (Q FI G)
D	BYC Yellow Can "D" Northeast of Seal Rocks	T	BYC Yellow Can "T" Southeast of Angelica Point
E	BYC Yellow Can "E" Southeast of Converse Point	U	Portable Pin end of Start / Finish Line to Port of Signal Boat
F	BYC Yellow Can "F" South of Bird Island	V	Portable Turning Mark a Short Distance to Windward of Start / Finish
G	Sippican Harbor Lighted Red Buoy "2" (FIR 4s) at Centerboard	W	Portable Windward Turning Mark at Bearing and Distance Posted on signal boat
H	BYC Yellow Can "H" at The Bow Bells East of Point Connett	X	BYC Yellow Can "X" East of Peases Point
I	BYC Yellow Can "I" East of Angelica Point	Y	BYC Yellow Can "Y" Southwest of The Cliffs
J	Portable Turning Mark to Leeward of Start / Finish Line	Z	Buzzards Bay Lighted Red Gong "10" (FIR) Southeast of West Island
K	West Island Red Bell "2SE" (off chart)		
L	Weepecket Rock Lighted Red Gong "8" (FI R) (off chart)		
M	Bird Island Green Bell "3" Southeast of Bird Island		
N	BYC Yellow Can "N" Southeast of Bird Island		

