



CONTENTS

Course 1: 7 NM

Course 2: 6.3 NM

Course 3: 5.45 NM

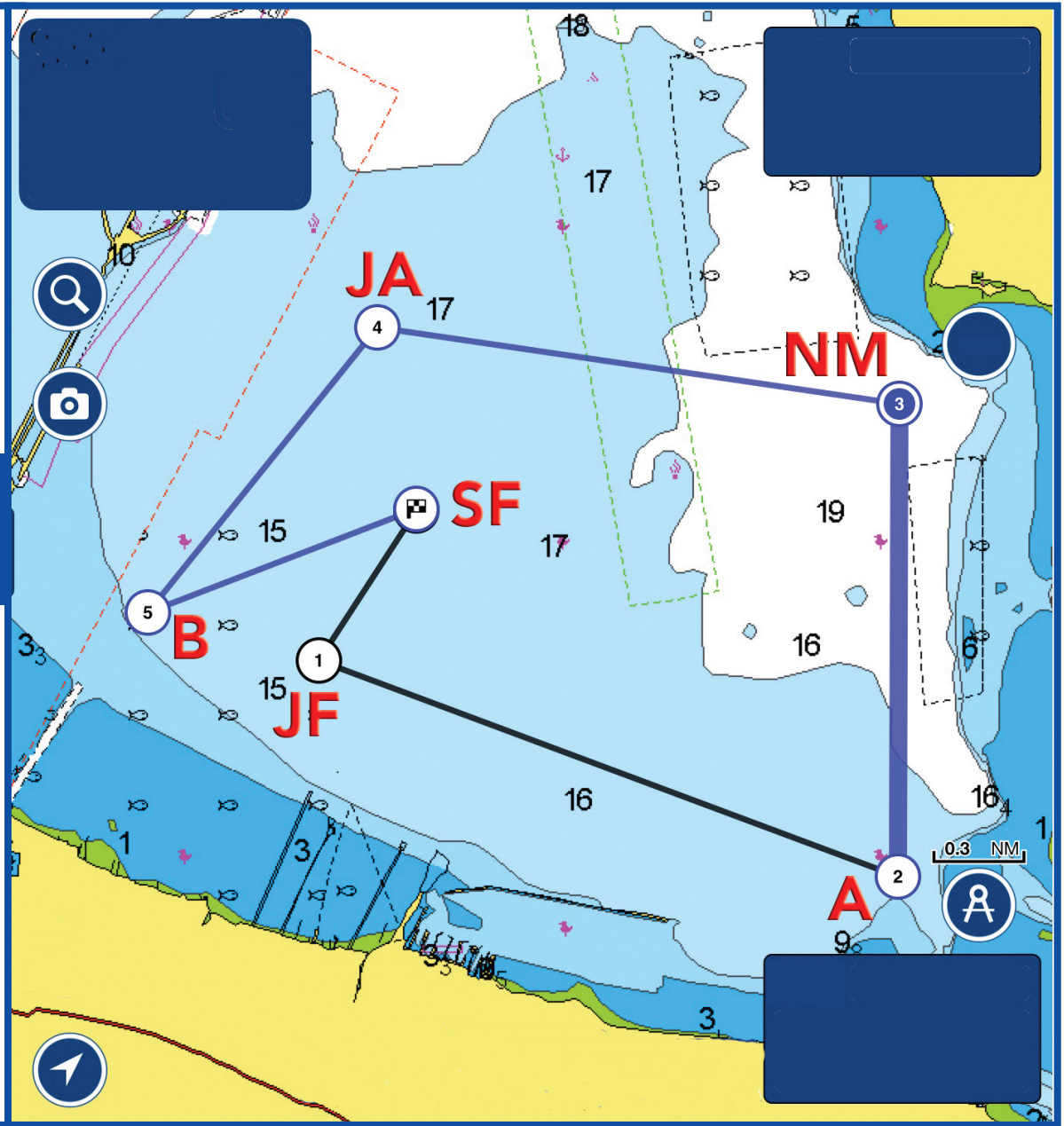
Racing Mark Locations

Code Flags



Ms. Race Course 1 7.0 NM

- SF → JF (0.5 NM, 213°)**
- JF → A (1.8 NM, 110°)**
- A → NM (1.3 NM, 0°)**
- NM → JA (1.5 NM, 278°)**
- JA → B (1.0 NM, 219°)**
- B → SF (0.8 NM, 69°)**



This chart is for illustrative purposes only and not to be used for navigation. Always consult local government navigation charts. See page 4 for mark locations.



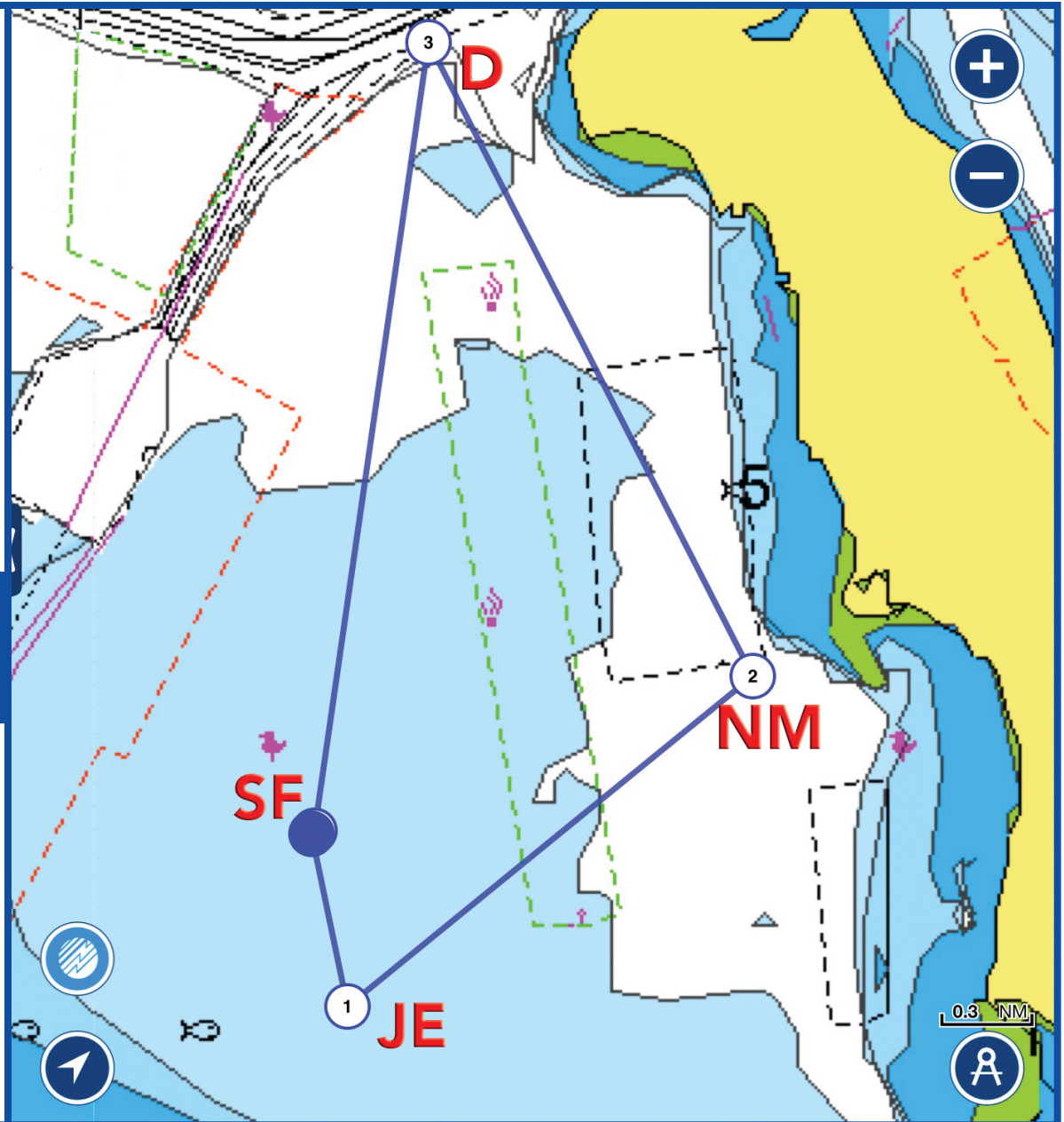
Ms. Race Course 2 6.3 NM

SF → JE (0.5 NM, 168°)

JE → NM (1.5 NM, 51°)

NM → D (2.0 NM, 333°)

D → SF (2.3 NM, 188°)



This chart is for illustrative purposes only and not to be used for navigation. Always consult local government navigation charts. See page 4 for mark locations.



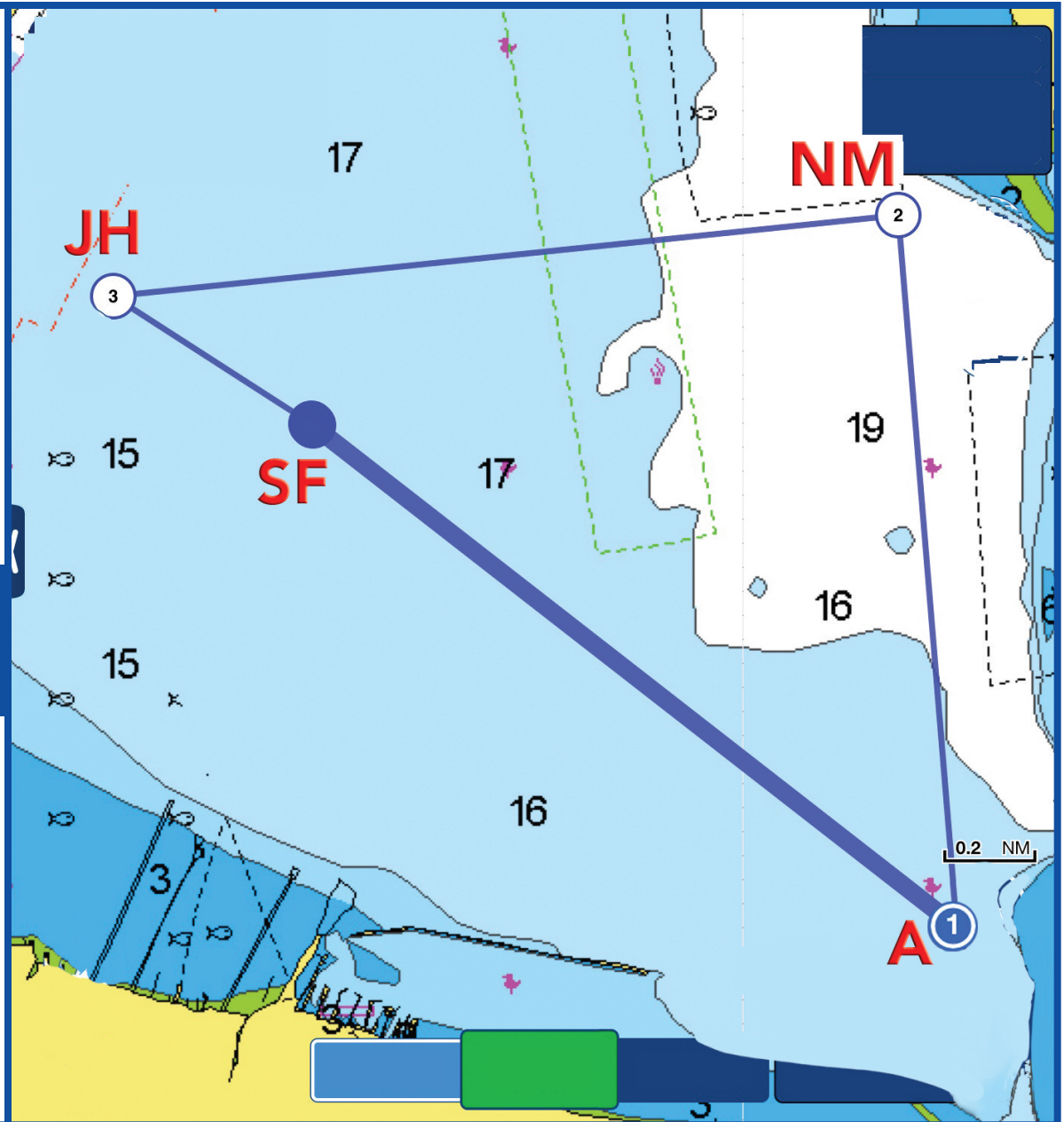
Ms. Race Course 3 5.45 NM

SF → A (1.74 NM, 142°)

A → NM (1.56 NM, 9°)

NM → JH (1.65 NM, 270°)

JH → SF (0.5 NM, 135°)



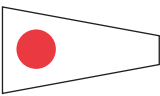



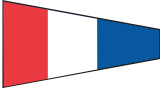













This chart is for illustrative purposes only and not to be used for navigation. Always consult local government navigation charts. See page 4 for mark locations.

Racing Mark Locations

NOTE: Differences between listed and actual latitude and longitude shall not be grounds for redress.

MARK		DESCRIPTION	LA	LONG
A	R "2"	Highlands Channel	4025.17	7400.35
B	AHYC MK	Leonardo— <i>New Location 2012</i>	4026.00	7403.10
BW	AHYC MK	AH Breakwater	4025.31	7401.34
C	FLG "1"	Sandy Hook Channel	4028.10	7402.37
D	FLG "17"	Sandy Hook Channel	4028.52	7401.69
JA	AHYC MK	Olympic Circle	4026.78	7402.25
JB	AHYC MK	Olympic Circle	4026.70	7401.75
JC	AHYC MK	Olympic Circle	4026.38	7401.47
JD	AHYC MK	Olympic Circle	4026.00	7401.56
JE	AHYC MK	Olympic Circle	4025.79	7401.98
JF	AHYC MK	Olympic Circle	4025.86	7402.47
JG	AHYC MK	Olympic Circle	4026.18	7402.76
JH	AHYC MK	Olympic Circle	4026.56	7402.66
AHBW		Atlantic Highlands Breakwater	4025.10	7401.22
AHYC		Floating Dock	4025.05	7402.01
FLG "11"		Required Mark Sandy Hook Channel	4028.86	7400.08
FLG "13"		Required Mark Sandy Hook Channel	4028.83	7400.69
NM		AHYC MK Horseshoe Cove	4026.632	7400.487
SF	AHYC MK	Olympic Circle	4026.29	7402.11
T	RN "2"	Chapel Hill Channel	4028.75	7402.68
AMB		Ambrose Light	4027.467	7350.14
WB		West Bank Lighthouse	4032.28	7402.56

C O D E F L A G S

 <p>CLASS FLAG "1" (A-1)</p>	 <p>L = FOLLOW ME OR COME WITHIN HAIL Notice posted if flown ashore</p>
 <p>CLASS FLAG "2" (A-2)</p>	 <p>N = ABANDONMENT Race is abandoned (3 Horns)</p>
 <p>CLASS FLAG "3" (B-1)</p>	 <p>X = INDIVIDUAL RECALL Down when all premature boats have restarted</p>
 <p>CLASS FLAG "4" (B-2)</p>	 <p>FIRST SUBSTITUTE GENERAL RECALL Class is recalled for fresh start</p>
 <p>CLASS FLAG "5" MULTIHULL</p>	 <p>S = SHORTEN COURSE Finish at nearby mark (2 Horns)</p>
 <p>CLASS FLAG "6" ONE DESIGN</p>	 <p>M = COMMITTEE BOAT is being used as a mark</p>
 <p>P = PREPARATORY SIGNAL</p>	 <p>I = ROUND THE ENDS RULE in force</p>
 <p>AP = POSTPONEMENT (2 Horns) Warning will be sounded 1 min. after flag is lowered</p>	 <p>ORANGE SHAPE Marks EXACT LINE on RC Boat</p>
 <p>N OVER A CANCELLATION (3 Horns) All races are abandoned. No more racing today.</p>	 <p>BLUE FLAG RC Boat is on station at finish</p>
