



Camping 2020 PYC Commodore's Cup Regatta

Attendees of this year's Commodore's Cup Sailing Regatta are welcome to enjoy the camping facilities available at Perry Yacht Club. The campgrounds are located on the premises of the Club and can house a wide variety of camping needs. Tent sites, pop up campers, travel trailers, fifth wheels, even motor homes can be accommodated.

Perry Yacht Club has seen a surge in the number of sites utilized for the various needs of our campers. Commodore's Cup 2020 should be a record year in the number of campers that our club can effectively service. We hope to be able to accommodate as many campers as possible. Please understand that this is an extremely busy time for our Club, so please work together to share power and space. Campgrounds are also available at the various state and federal parks located around the lake for a modest price. To ensure that you will have a campsite, please visit the park websites and reserve your spot early.

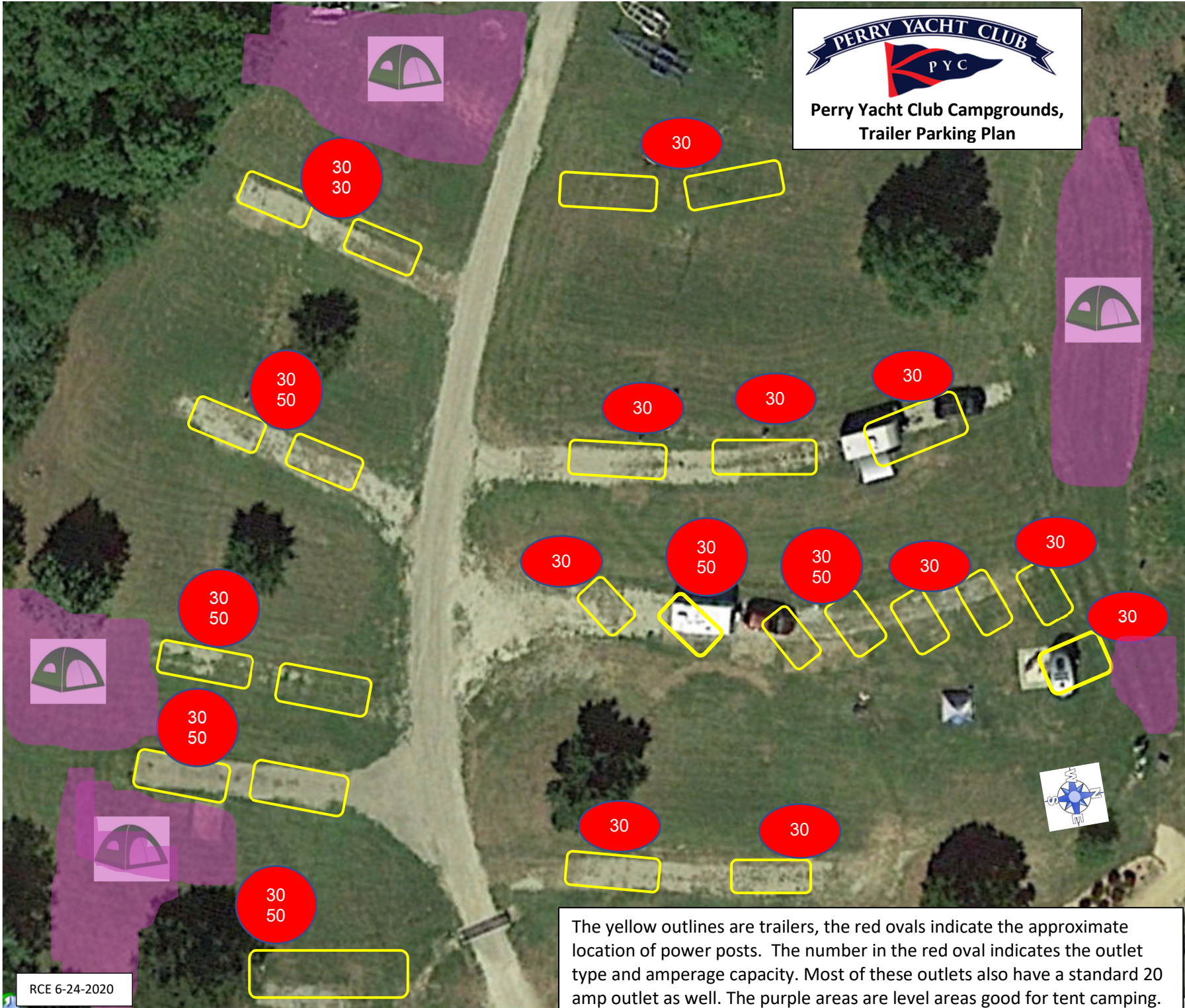
Those wishing to camp at Perry Yacht Club, please make note of the rules, regulations, and limitations of our site:

- **No sites are to be utilized by anyone until Noon, Wednesday, Sept. 2nd, 2020. This will allow our groundskeepers the ability to more effectively prepare the site for the weekend.**
- **Space is limited and available on a first come, first served basis only... no reservations or 'holding' of campsites. (Exception: 4 campsites are reserved for Commodore's Cup administration; respect the reserved signs).**
- **Utilize the space that is designated for your type of camping only (i.e. tent campers on tent sites, etc.).**
- **Be sure to pull forward as much as possible to make it easier for others to park behind you rather than driving around you.**
- **Share utility boxes with others. A typical utility box contains one 30 AMP and two 20 AMP outlets. Utilization of extension cords to go under and around larger campers will be necessary for everyone's comfort and convenience.**
- **Potable water is available on the premises but should only be utilized to fill up your fresh water holding tank (no 'permanent/city' fresh water hookup is available).**
- **There is no dumping or pump out station on the grounds of PYC. All those needing to dump their holding tanks may do so at the state park (nominal day use fee applies) just south of Rock Creek Marina.**
- **Park your vehicles in the designated parking lot... DO NOT park your vehicle(s) on the campgrounds... this will allow more space for everyone as well as an increase in safety to our campers.**
- **Kitchen facilities will be CLOSED to ALL. Contact a Club officer if you have any questions.**
- **PLEASE BE COURTEOUS TO YOUR NEIGHBOR(S). DO enjoy the facilities and camaraderie; DO share your site and electrical outlets; DO make ample room for other campers; DO enjoy the racing, and ALWAYS remember our PYC motto... Leave It Better Than You Found It.**
- **ALL DOGS MUST BE ON LEASHES AT ALL TIMES. NO PETS ALLOWED IN THE SHELTER AREA DURING MEAL TIMES. NO PETS IN RESTROOMS OR KITCHEN. PLEASE CLEAN UP AFTER YOUR DOGS! DOGS ARE NOT TO BE LEFT UNATTENDED AT THE CLUBHOUSE AT ANY TIME.**

If you see any items needing attention during the weekend, please let any staff member know immediately-we want everyone to have a great, clean and safe time!!



**Perry Yacht Club Campgrounds,
Trailer Parking Plan**



The yellow outlines are trailers, the red ovals indicate the approximate location of power posts. The number in the red oval indicates the outlet type and amperage capacity. Most of these outlets also have a standard 20 amp outlet as well. The purple areas are level areas good for tent camping.