



CHARGE! CUP

Galveston Bay

August 29, 2020

Sailing Instructions

1. Rules

The regatta will be governed by the *rules* as defined in the current *Racing Rules of Sailing* (RRS), including US Sailing Prescriptions, the International Rules for Prevention of Collision at Sea (COLREGS), the Notice of Race and these Sailing Instructions.

- Sailing Instruction 2 modifies RRS 63.1
- Sailing Instructions 7 & 8 modifies RRS 29
- Sailing Instructions 8 & 15.3 modifies RRS 62.1(a)
- Sailing Instruction 9 modifies RRS 32
- Sailing Instruction 10 modifies RRS 28
- Sailing Instruction 11 modifies RRS 35
- Sailing Instruction 12 modifies RRS 61
- Sailing Instruction 13 modifies RRS A2
- Sailing Instruction 15 modifies RRS 77 & G4
- Sailing Instruction 17 modifies RRS 62.1(a)

2. Owner's and Skippers Responsibilities

- 2.1 The safety of a yacht and her crew is the sole and inescapable responsibility of the skipper, who must ensure that the yacht is fully found, thoroughly seaworthy and manned by an experienced crew. The skipper is responsible to be fully knowledgeable of all the requirements and skills of offshore sailing.
- 2.2 It is the sole and inescapable responsibility of the skipper to decide whether to start or to continue a race.
- 2.3 Yachts MUST obey all maritime RULES OF THE ROAD when encountering vessels not racing. This is especially important when dealing with ship and other commercial traffic. Special attention is given to the Preamble of Part 2 of the RRS. Serious violation of applicable regulations shall be cause for disqualification by the Race Committee without hearing. This modifies Rule 63.1

3. Notices to Competitors

Official notices to competitors will be posted online at:

http://www.regattanetwork.com/clubmgmt/applet_notice_board.php?regatta_id=21118

Any written change to the sailing instructions, schedule of races or notice of race will be posted before 2000 the day before it will take effect. Any oral change will be communicated to each boat via VHF radio channel 69 at Check In.

4. Race Schedule

One race is planned. The warning signal for the race will not be before 10:00 hours.

5. Race Area and Courses

The race area will be Upper Galveston Bay, from Eagle Point to the South to Morgan's Point to the North. At no time shall a boat enter the Houston Ship Channel while racing. Boats will be crossing the Bayport entrance channel while racing. At no time does a boat have right of way over a commercial vessel while racing. Interference with commercial marine traffic in any shipping lane will be grounds for immediate disqualification and potentially ineligibility for registration of any future GBCA events, subject to final decision by the Board. The course to be sailed by class will be signaled by numeral flag and announced via VHF channel 69. Fixed Marks, Courses and Class Flags are described in Appendix A.

6. Check In

Before the warning signal of the race, all yachts intending to race shall pass the committee boat on Starboard tack and hail the boat's name (or sail number), until acknowledged by the Race Committee.

7. The Start

- 7.1 The starting line will be between an orange tetrahedron on the Port side and an orange flag or shape displayed on the committee boat.
- 7.2 Boats whose preparatory signal has not been made shall keep clear of the starting area and of all boats whose preparatory signal has been made.
- 7.3 Any class subjected to a General Recall may be re-started after the last scheduled start for that race. This modifies RRS 29.2.
- 7.4 Yachts starting later than fifteen (15) minutes after their starting signal will be allowed only at the discretion of the Race Committee.

8. STARTING SIGNALS

- 8.1 The course to be sailed will be designated by a numeral pennant and announced on VHF Channel 69. It is possible that spinnaker, non-spinnaker and cruising classes will sail different courses.
- 8.2 Starting order of classes may vary on conditions and courses.
- 8.3 The Race Committee may give a countdown on VHF channel 69 prior to the raising/lowering of each signal flag.
- 8.4 As a courtesy, the Race Committee may attempt to hail recalled yachts. Failure of the race committee to make this broadcast, failure of a boat to receive the broadcast, a boat's order in that broadcast or the promptness of the broadcast shall not be subject to redress. This modifies RRS 29 and RRS62.1(a).

9. Shorten Course

- 9.1 If the Race Committee displays the "S" code flag with one or more class flags, the shortened course applies only to those classes.
- 9.2 If the "S" code flag is flown alone, all classes will sail the shortened course. This modifies RRS 32.

10. The Finish

- 10.1 The Finish Line for all courses will be between an orange tetrahedron on the port end and an orange flag or shape displayed from a signal boat on the starboard end.
- 10.2 In the event of a Shortened Course at a fixed mark, the Finish Line will be between the fixed mark on the port end, and an orange flag or shape displayed from a signal boat on the starboard end.
- 10.3 Finishing Procedures: In the event that a yacht cannot reach the Race Committee by VHF or the Race Committee is not on station, she shall continue to the finish line, take her own finish time and report it to the Race Committee as soon as possible. This modifies RRS 28

11. Time Limit

The time limit for all classes will be 18:00 hours. Yachts exceeding the time limit will be scored Did Not Finish (DNF). This modifies RRS 35.

12. Protests

RRS Appendix T – Arbitration – will be in effect. Intent to protest shall be communicated to the Race Committee by VHF channel 69 before leaving the race area and must be filed in writing prior to 1900 hours at the after-race social location for that day. The protest hearing may be held at a later date. This modifies RRS 61.

13. Scoring

The Low Point system, RRS Appendix A will apply.

For PHRF classes, Time on Time scoring will be used with the following conversion formula: Time Correction Factor (TCF) = $A/(B+PHRF)$. A is a fixed factor of 650. B can vary between 480 and 600. For this event, a B factor of 550 will be used. Corrected Time = Time Correction Factor x Elapsed Time.

For ORC Classes, Time on Time triple number ratings will be used. The wind speed factor used will be at the discretion of the race committee and will not be announced prior to the start of the race. Race committee will monitor wind conditions throughout the day and apply the appropriate factor prior to posting final results.

14. Sail Numbers

Boats shall carry USSA, class, or hull numbers on mainsails, spinnakers, and each overlapping headsail having a luff perpendicular exceeding 130% of the base of the fore triangle. These sail numbers shall correspond to the sail numbers listed on the scratch sheet, unless different numbers or identification are approved by the Race Committee. Notification of such approval will be posted before 0800 on the day approval is given at:

http://www.regattanetwork.com/clubmgmt/applet_notice_board.php?regatta_id=21118

This is not subject to protest. This modifies RRS 77 & Append G4.

15. Safety

15.1 A boat that retires from a race prior to finishing shall notify the Race Committee as soon as practicable on VHF channel 69. If radio communication is unavailable, call the Race Committee phone number: 713.591.8115 and leave a message.

15.2 **Attention is called to RRS 4: Decision to Race, “The responsibility for a boat’s decision to participate in a race or to continue *racing* is hers alone.”**

16. Communication

16.1 Radio communication will be conducted on **VHF channel 69**.

16.2 The Race Committee will attempt to monitor and may make courtesy announcements on VHF channel 69

16.3 The failure of the Race Committee to make announcements or the manner in which announcements are made will not be grounds for redress. This modifies RRS 62.1(a).

16.4 If a weather-related postponement is required it will be announced at 2 hours prior to the warning signal on VHF channel 69.

Class Flags and anticipated starting order

CLASS	FLAG
GBCA Cruising Class	Orange
Cruising Class - Spin	Blue
Multihull	Green
ORC Spinnaker	Pink

Appendix A

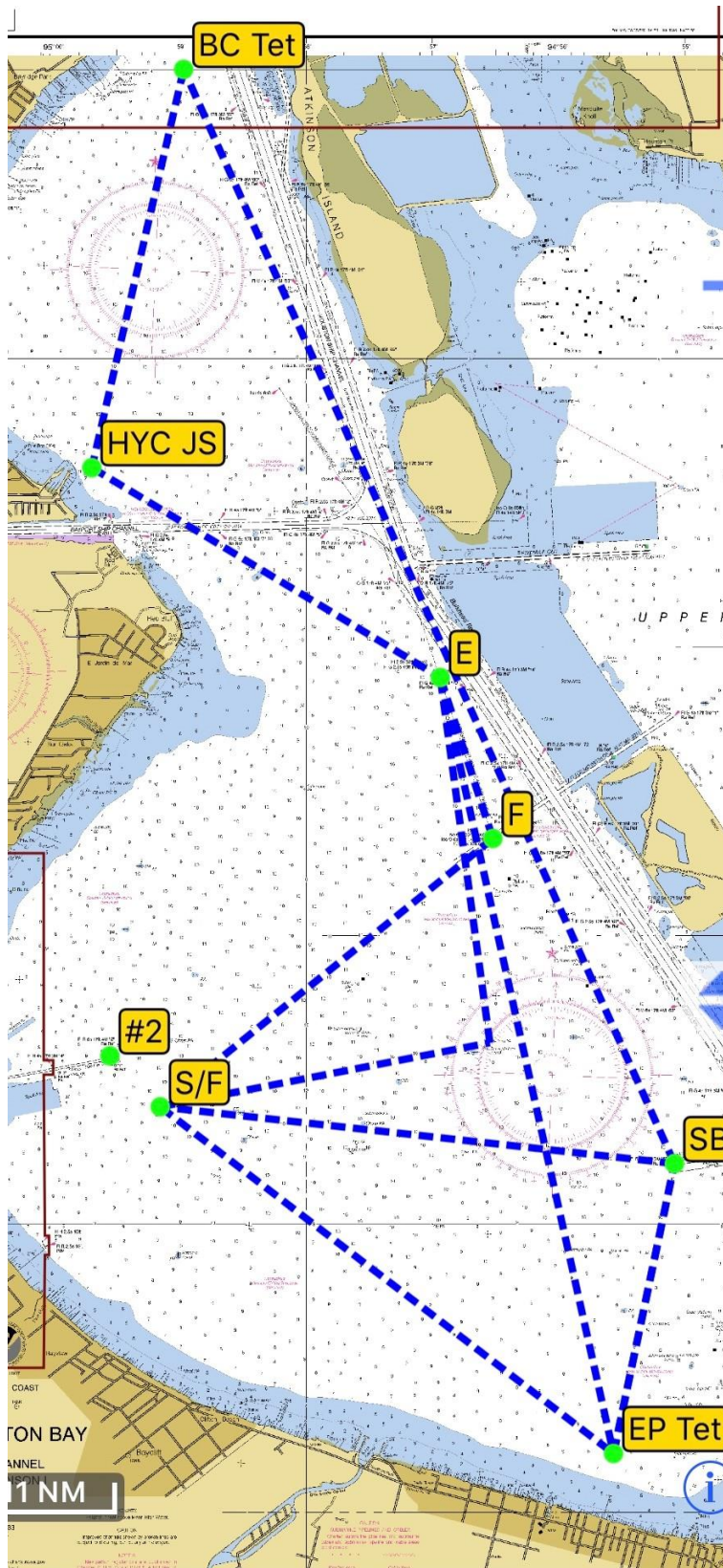
Marks

Mark	Latitude	Longitude
Start/Finish (Approx)	29' 23.811 N	94' 59.153 W
Eagle Point – Tet (Approx)	29' 30.406 N	94' 55.562 W
SBC #8	29' 32.417 N	94' 55.808 W
Barbours Cut – Tet (Approx)	29' 40.001 N	94' 58.968 W
HYC Judges Stand (Approx)	29' 37.241 N	94' 59.695 W
E Mark – Range Mark	29' 35.787 N	94' 56.935 W
F Mark – Range Mark	29' 34.671 N	94' 56.518 W
H Mark - Platform	29' 33.255 N	94' 56.542 W

Courses

Course #	Mark	Distance (nm)	Bearing (°)	Rounding	
<u>1</u>	Start/Finish	-	-	-	
	EP Tet	3.94	128	Port	
	SBC #8	2.05	012	Port	
	BC Tet	8.30	336	Port	
	HYC JS	2.83	193	Port	
	E Mark	2.81	121	Starboard	
	F Mark	1.17	162	Starboard	
	Start/Finish	2.95	231	Port	
	H Mark	2.31	079	Port	
	E Mark	2.55	352	Starboard	
	EP Tet	5.51	167	Port	
	SBC # 8	2.05	012	Port	
	Finish	3.56	276	-	
	Total:	40.06			

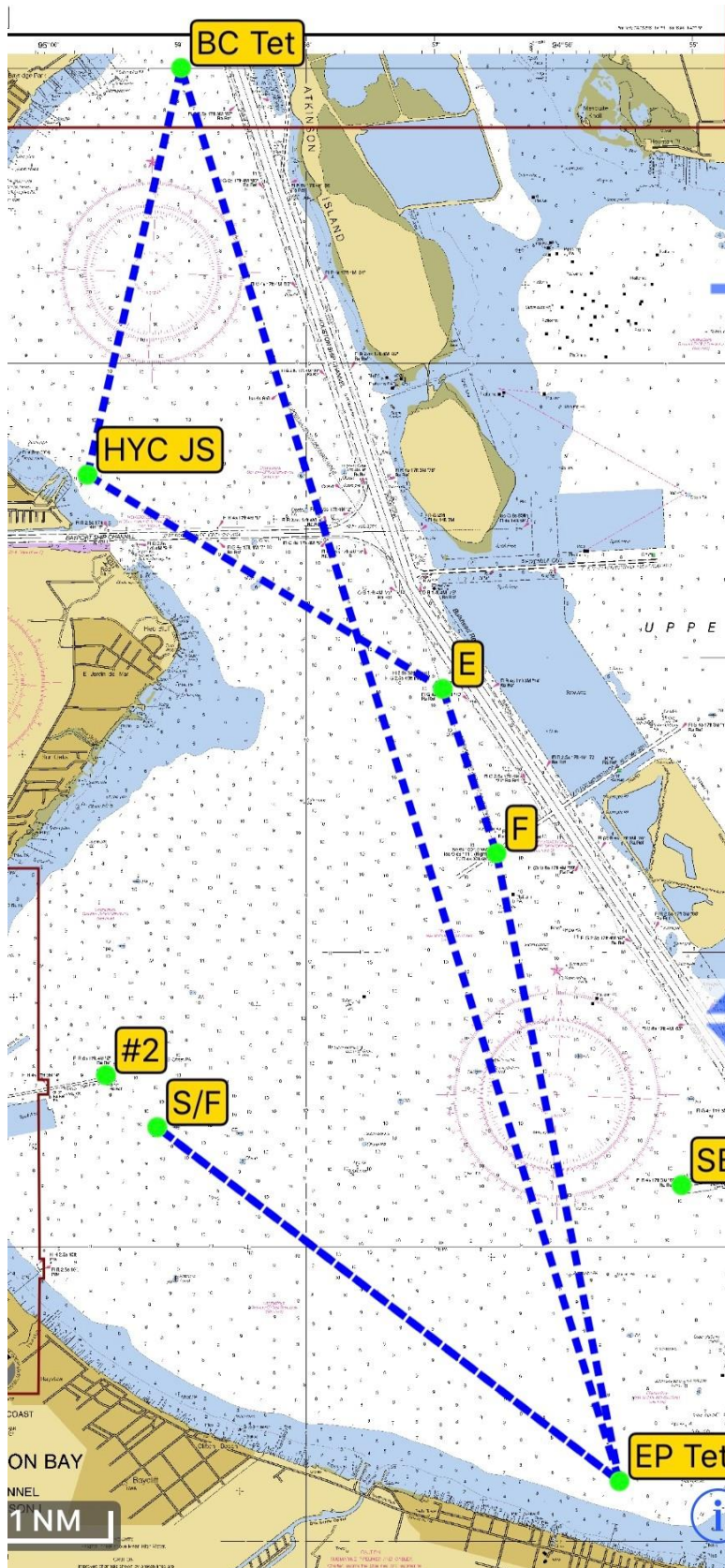
Course 1



Course 2

Course #	Mark	Distance (nm)	Bearing (°)	Rounding
<u>2</u>	Start/Finish	-	-	-
	EP Tet	3.94	128	Port
	BC Tet	10.04	343	Port
	HYC JS	2.83	193	Port
	E Mark	2.81	121	Starboard
	F Mark	1.17	162	Starboard
	EP Tet	4.35	169	Starboard
	Finish	3.94	308	-
	Total:	29.08		

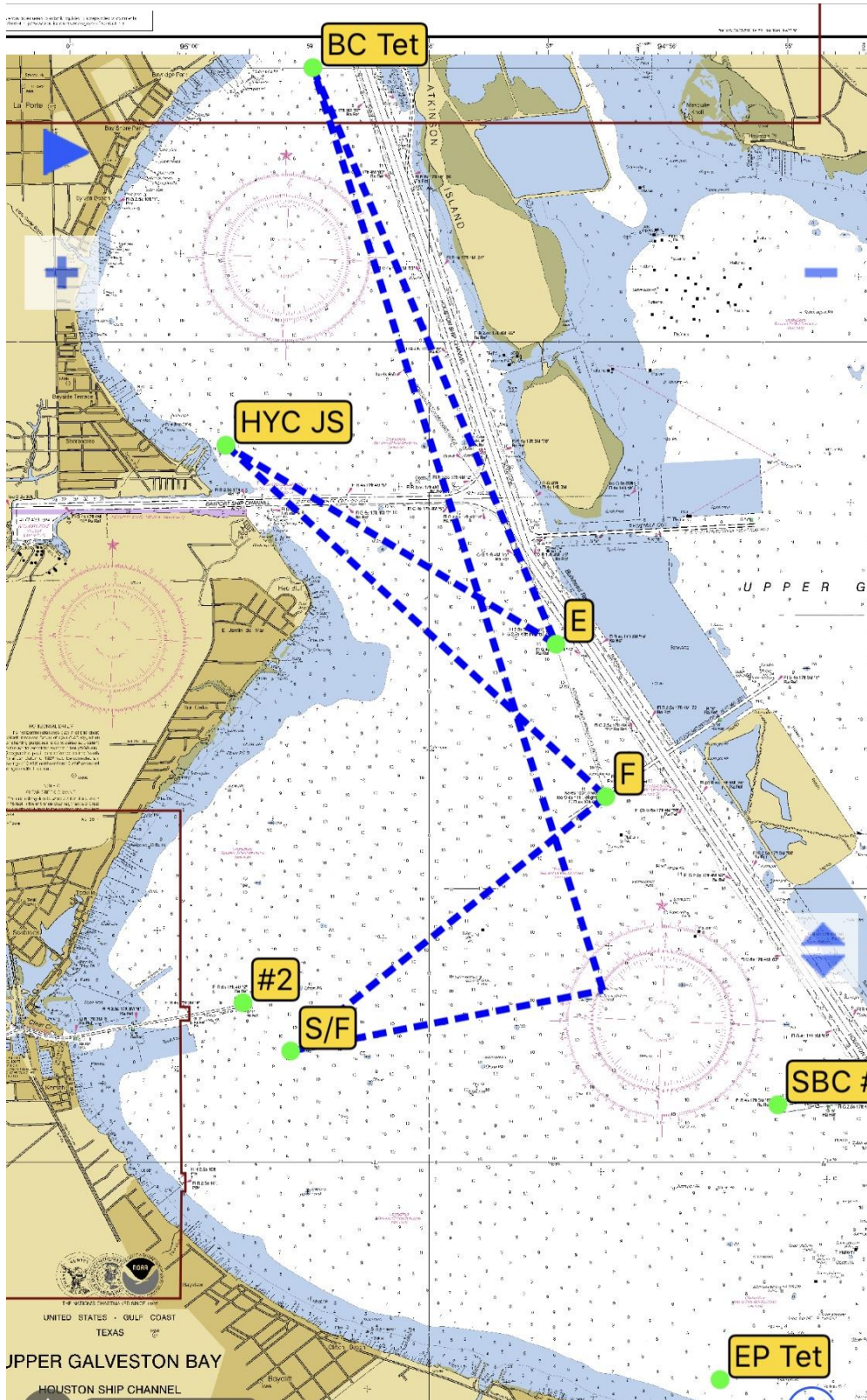
Course 2



Course 3

Course #	Mark	Distance (nm)	Bearing (°)	Rounding
3	Start/Finish	-	-	-
	H Mark	2.31	079	Port
	BC Tet	7.07	343	Starboard
	E Mark	4.57	157	Starboard
	HYC JS	2.81	301	Starboard
	F Mark	3.77	133	Starboard
	Finish	2.95	231	-
	Total:	23.48		

Course 3



Thanks to all our Sponsors!

GBCA 2020 SPONSORS



CRUZAN RUM



GOLD SPONSORS

SILVER SPONSORS

BRONZE SPONSORS



Kevin E. Severance
Insurance Agency, LLC
281-333-3100
www.insurancenavigators.com



C&C SAILMAKERS



Hayes Rigging
281-474-4505



Windward
SEA VENTURE



KO
SAILING



Little Yacht Sales
Lagoon Catamarans - Catalina Yachts
Premier Brokerage Yachts



Gulf Coast



Y.E.S.
YACHT EQUIPMENT SERVICE CENTERS, LLC



North Canvas
and Upholstery
281-334-7223



M
MANTUS
MARINE



Banks Sails



Slip-n-Rig'n



TRUE NORTH MARINE