



# 49er.ca

“9er North Americans”

**49er & 49erFX North American Championships  
and  
29er/49er/49erFX Skiff Generation Grand Prix Event 3  
Miami, FL**

**December 10 - 13, 2020**

**The Organizing Authority (OA) is the Coconut Grove Sailing Club in  
conjunction with the North American 49er Class Association**

## **SAILING INSTRUCTIONS**

POSTED 12/7/2020

*The notation [DP] in a rule in the Sailing Instructions (SI) means that the penalty for a breach of that rule may, at the discretion of the Protest Committee, be less than disqualification.*

### **1 RULES**

- 1.1 The regatta will be governed by the rules as defined in the current edition of *The Racing Rules of Sailing* and the 49er, 49erFX and 29er Class Rules and Race Management guidelines, except as modified by the Notice of Race (NOR) and these SIs.
- 1.2 Rule 44.1 is changed so that the two-turn penalty is replaced by a one-turn penalty. The SI's may also change other racing rules.
- 1.3 Only US Sailing Prescriptions rule 61.4, Appendix R, and prescriptions to rules 67, 70.5(a) and 76.1 shall apply. They will be posted on the official on-line notice board.
- 1.4 Competitors who are 18 years or younger shall wear a PDF at all times while afloat. Code Flag “Y” will not be displayed. This changes rule 40 and the preamble to Part 4 [NP].
- 1.5 If there is a conflict between the NOR and the SI's, the SI's shall prevail. This changes rule 63.7.

### **2 NOTICES TO COMPETITORS and COACHES**

- 2.1 All race documents, notices & results will be posted on the official notice board at Regatta Network. [https://www.regattanetwork.com/event/21126#\\_newsroom](https://www.regattanetwork.com/event/21126#_newsroom).
- 2.2 On Wednesday, December 9<sup>th</sup>, at 20:00, there will be a virtual competitor's briefing, via Zoom, available via link <https://us02web.zoom.us/j/87007741112?pwd=dWV6TzZM5UTISTUxHbnJNV1FOeHBKZz09>

For Phone only, +1 301 715 8592 US Meeting ID: 870 0774 1112 Passcode: 430217

- 2.3 The RC will be using VHF channel 69.
- 2.4 In the event of an onshore postponement, the RC will communicate to competitors via VHF

radio and by using their registered email, notifying competitors to check the on-line notice board.

### **3 CHANGES TO SAILING INSTRUCTIONS**

- 3.1 Any changes to the SI's will be posted no later than 0900 on the day they will take effect, except that any changes in the schedule of races will be posted no later than one (1) hour after the latest protest time limit on the day before they take effect (SI 15.2). In the event of no racing on a day, any changes in the schedule of races will be posted no later than 1900 hours on the day before they take effect.
- 3.2 Oral changes to the SI's may be given on the water. The RC shall display Code Flag "L" and, in accordance with rule 90.2(c), announce the change on VHF channel 69. Competitors shall also approach the RC and verbally receive the change while Code Flag "L" is displayed.

### **4 SIGNALS MADE ASHORE**

- 4.1 Signals made ashore will be displayed from the main flagpole at the CGSC, and will be communicated to competitors by using their registered email. When a signal is displayed over a class flag, it applies to that fleet only.
- 4.2 Code Flag "L", when displayed ashore signifies that a change in SI or other notice to competitors has been posted on the official notice board. All competitors will be notified *via* email that a signal has been made ashore.
- 4.3 Code Flag "AP" when displayed ashore means that the start has been postponed. The warning signal will be made not less than 60 minutes after the lowering of this signal. This changes Race Signals AP. All competitors will be notified *via* email that a signal has been made ashore.

### **5 SCHEDULE OF EVENTS**

- 5.1 The Championship schedule will be as follows:

<b>Date</b>	<b>Time</b>	<b>Event</b>
Wed, Dec 9	18:00-20:00	49er Registration/Check-in (by phone – Call 617-308-8793)
	20:00	Virtual competitors briefing via Zoom (FOR ALL FLEETS)
Thurs, Dec 10	08:00-10:00	49er Registration/Check-in (by phone – Call 617-308-8793)
	12:00	Warning signal for first race of the day; additional races to follow
Fri, Dec 11	12:00	Warning signal for first race of the day; additional races to follow
	18:00-19:00	29er Registration/Check-in (by phone – Call 617-308-8793)
Sat, Dec 12	09:00-10:00	29er Registration/Check-in (by phone – Call 617-308-8793)
	12:00	Warning signal for first race of the day; additional races to follow
Sun, Dec 13	12:00	Warning signal for first race of the day; additional races to follow
	15:00	No initial warning signal may be made
	ASAP	After racing, virtual prizegiving <i>via</i> Zoom

- 5.2 December 10-13, there are 15 races are scheduled for the 49er and 49erFX fleets. The RC may run fewer races at its discretion.
- 5.3 December 12-13, there are seven (7) races scheduled for the 29er fleet. The RC may run

fewer races at its discretion.

- 5.4 The RC will display Code Flag "A" while boats are finishing to indicate "No more racing today." If Code Flag "A" is not displayed, boats should return to the starting area.

## **6 RACING AREA**

All racing will take place in the waters of Biscayne Bay, south of Rickenbacker Causeway. Attachment A shows the approximate location of the racing area.

## **7 COURSES**

- 7.1 The course diagram can be found in Attachment B.
- 7.2 No later than the warning signal, the RC will display the course to be sailed and the approximate magnetic compass bearing to the first mark.
- 7.3 Mark 1 shall be left to port.
- 7.4 If either of the gate marks 2 S/P are missing, boats shall round the remaining mark to port.

## **8 MARKS**

- 8.1 For the 49er and 49erFX fleets, Mark 1 will be a yellow tetrahedron.
- 8.2 For the 29er fleet, Mark 1 will be a green tetrahedron.
- 8.3 Marks 2 S/P is a gate composed of two yellow tetrahedrons, located to windward of the start line.

## **9 THE START**

- 9.1 The starting line will be between a staff displaying an orange flag on the RC signal boat and a staff displaying an orange flag on a port end pin boat or the course side of an orange tetrahedron.
- 9.2 An inflatable buoy may be tethered to the stern of the RC committee boat(s) and will function as an extension of the RC boat.
- 9.3 The class flags will be class flags for the 49er, 49erFX, and 29er classes.
- 9.4 The order of starts will be 49er, 49erFX, 29er.
- 9.5 Starts for each fleet will be in accordance with Appendix U, 3-minute start sequence, with the following modifications:
  - 9.5.1 The class flag for each fleet starting will be displayed at 3 minutes and lowered at the start.
  - 9.5.2 All starts will be under Code Flag "P" flag (it will not be displayed), unless another start penalty flag is used.
  - 9.5.3 If a start penalty flag is used, it will be displayed at 2 minutes and lowered at 1 minute before the start.
- 9.6 A boat starting later than four (4) minutes after her starting signal will be scored Did Not Start (DNS) without a hearing.

## **10 RECALLS**

- 10.1 In the event of an individual recall, the RC will attempt to hail the sail number of boats that are identified as OCS. Failure of a boat to see or hear her recall notification, and the timing and order of such hails, or the length of time it takes to make a notification will not be grounds for redress requests. This is in addition to and changes rules 60.1 (b) and 62.1 (a).
- 10.2 As a courtesy, the RC will post OCS sail numbers on the RC signal boat after the start.

## **11 CHANGING THE NEXT LEG OF THE COURSE**

- 11.1 To change the next leg of the course, the RC will move the original mark.
- 11.2 During the course of a race, the RC reserves the right to tweak the course less than 5 degrees, or less than .2nm, without signalling a change of course. This changes rule 33.

## **12 FINISH**

The finish line will be on the opposite side of the RC signal boat from the starting line and will be between a staff displaying an orange flag on a RC boat and the course side of an orange tetrahedron.

## **13 PENALTY SYSTEM**

- 13.1 Rule 44.1 is changed so that the Two-Turns Penalty is replaced by the One-Turn penalty. A boat that has taken penalty turns is encouraged to notify the Protest Committee by completing the online Penalty Acknowledgement form at [https://docs.google.com/forms/d/e/1FAIpQLSevmymWr-tbblI7qlh0PYm5M8jXXVZdMv\\_5-lbidk-7h2BQw/viewform](https://docs.google.com/forms/d/e/1FAIpQLSevmymWr-tbblI7qlh0PYm5M8jXXVZdMv_5-lbidk-7h2BQw/viewform)
- 13.2 The penalty, if any, for a violation of a rule other than a rule of Part 2, or rules 31 or 42, will be a Discretionary Penalty [DP] of the Protest Committee and may be other than disqualification. This changes rule 64.1(a).

## **14 TIME LIMITS**

- 14.1 The time limit for a boat to reach Mark 1 is 15 minutes.
- 14.2 The time limit for a boat to finish is 60 minutes.
- 14.2 Any boats failing to finish within ten (10) minutes after the first boat sails the course and finishes will be scored as "DNF" without a hearing. This changes rule 35 and A4 and A5.

## **15 PROTESTS AND REQUESTS FOR REDRESS**

- 15.1 A boat intending to protest shall, if practicable, inform the RC of its intention and the identity of the protested boat(s) as soon as possible after finishing.
- 15.2 Scoring inquiries, including potential redress requests relating to a starting penalty, should be initiated by filling out the online Scoring Inquiry form at <https://docs.google.com/forms/d/e/1FAIpQLSc56x9WKwLpbLRiQE5NOPGtKmntIVJQT6-IWpISqVouz5qIQ/viewform>. Alternatively, a completed Scoring Inquiry form may be photographed and emailed to [ScoringInquiry@cgsc.org](mailto:ScoringInquiry@cgsc.org). Also, questions about the status of scoring inquiries can be emailed to [ScoringInquiry@cgsc.org](mailto:ScoringInquiry@cgsc.org). The RC will investigate, get back to you, and attempt to resolve the issue. If the scoring inquiry turns into a redress request, then the redress time limit will have been satisfied if the Scoring Inquiry form was submitted before the redress time limit expired.

- 15.3 Protests and requests for redress unrelated to a starting penalty should be initiated by filling out by filling out the online Protest form at [https://docs.google.com/forms/d/e/1FAIpQLSdzOkZE7vvK\\_iXfJzfTr2txULYBp3CoQjtoEphz2aVXlvU5lQ/viewform](https://docs.google.com/forms/d/e/1FAIpQLSdzOkZE7vvK_iXfJzfTr2txULYBp3CoQjtoEphz2aVXlvU5lQ/viewform). Additionally, if a diagram is required, it should be photographed and emailed to [Protest@cgsc.org](mailto:Protest@cgsc.org). Alternatively, a completed Protest form may be photographed and emailed to [Protest@cgsc.org](mailto:Protest@cgsc.org). Also, questions about the status of protests and redress requests can be emailed to [Protest@cgsc.org](mailto:Protest@cgsc.org). Protests and requests for redress shall be emailed within the protest time limit, which is one (1) hour after the RC finish boat docks and which will be posted on the regatta website notice board. Virtual Protest hearings will be conducted *via* Zoom.
- 15.4 Notices will be posted on the regatta site no later than 15 minutes after the protest time limit to inform competitors of hearings in which they are parties to or named as witnesses. It is each boat's sole responsibility to check the regatta site notice board to see if she is cited in a protest. Representatives of boats who are parties to hearings and their witnesses shall remain on call until excused by the Protest Committee.
- 15.5 Notices of protests by the RC, Technical Committee or Protest Committee will be posted on the official notice board on Regatta Network to inform boats under rule 61.1(b). Competitors will be informed *via* email or phone.
- 15.6 On the last scheduled day of racing a request for redress based on a Protest Committee decision shall be delivered no later than 30 minutes after the decision was posted. This changes rule 62. If the RC posts the results on the official notice board prior to the protest time limit expiring, redress based on being scored OCS, ZFP or BFD shall be made no later than 30 minutes after the protest time limit. This changes rule 62.2.
- 15.7 Breaches of SI 18 or rule 55 will not be grounds for protest by a boat. This changes rule 60.1. [DP]
- 15.8 The actions of media boats will not be grounds for redress. This changes rule 62.1(a).

## **16 SCORING**

- 16.1 When five (5) or more races have been sailed, a boat's worst score will be excluded. This modifies rule A2.
- 16.2 One (1) race is required to constitute a series.

## **17 MEASUREMENTS**

- 17.1 Any boat may be inspected for class rules compliance prior to racing. Additional spot measurement checks may be carried out during the Championship.
- 17.2 Only one set of sails, and one forestay, shall be used throughout the regatta.
- 17.3 Equipment shall only be replaced with the permission of the RC.
- 17.4 For the 49er and FX classes, any version of previously legal sail numbers may be used. In the case of a duplicate number, the RC shall make an alternate arrangement.
- 17.5 For all classes, any versions of previously legal equipment may be used.

## 18 **TRACKERS**

Boats selected daily by the OA and assigned to install and operate GPS positioning tracking units shall pick up their devices every morning at the Check-In-Desk /Sailors Info and shall return them no later than protest time limit. [DP] The location of the Check-In-Desk /Sailors Info is USSC Breezeway.

## 19 **COACH AND PRIVATE SUPPORT BOATS**

- 19.1 Support boats shall be registered with the OA and will be required to comply with local legislation, CGSC Staff instructions, and the 29er Class Support Boat Regulations (see International Class website under Events and Race Management).
- 19.2 Coach Vessels shall register with CGSC during Registration, receive a flag, and sign a credit card authorization. Upon request, a mooring ball will be assigned for overnight use. The vessel will be charged \$80 if the flag is not returned at the end of the regatta. No coach vessel will be allowed on the course without a flag
- 19.3 Coach and support boats are required by the RC to monitor VHF channel 69 and shall abide by all RC instructions. In addition, they shall provide assistance to any competitor in danger if notified to do so by the RC.
- 19.4 At the warning signal for the start, individual coach or support boats shall leave the area being used by the racing boats and may station themselves outside of either ends of the start line, but no closer than 100 meters.
- 19.5 Individual coach and support boats shall not approach closer than 100 meters to any boat that is racing, except at mark roundings or at the finish line, where they shall not approach closer than 100 meters upwind of the windward mark or the finish line.
- 19.6 Non-CGSC boats will not be allowed use of CGSC docks at any time, except for launching and retrieval. All coach and support boats that are staying at CGSC must use mooring balls assigned by Dock Staff at time of check-in.
- 19.7 The RC reserves the right to make additional requirements for coach and / or support boats at any time during the regatta. A hearing may be called if a coach or spectator boat fails to comply with the requirements of SI 19. [DP]

## 20 **PRIZES**

- 20.1 Prizes will be awarded to the top three (3) teams in all classes. Additional prizes may be awarded at the discretion of the OA.
- 20.2 Prizes for the Skiff Generation Series will be allocated as follows: Each series event will have a prize pool to be split between the three (3) classes. A grand prize will be awarded to the overall series champion of each class at the series finale. All races will count towards determination of winners for the Skiff Generation Grand Prix event and series.

## 21 **SAFETY REQUIREMENTS**

- 21.1 A boat that retires from a race or does not intend to start a scheduled race shall promptly report this to the RC via hailing or having their coach calling the RC on VHF channel 69, and receive acknowledgement. If this is not possible, she shall promptly report her actions to the RC *via* email to [RaceCommittee@CGSC.org](mailto:RaceCommittee@CGSC.org).
- 21.2 The safety of sailors and volunteers is paramount. All skippers, crews and interested parties must comply with all CGSC and USSC Health protocols. Please remember to socially distance at least six feet from others, to wear a mask at all times while ashore, regularly wash your hands, and avoid touching your face. If you have any symptoms of Covid-19 or are feeling unwell, you shall stay away from the regatta premises and competitors.

Further, while ashore, all skippers and crews are to promptly comply with instructions from the CGSC or USSC Staff. Failure to comply with this SI shall not be grounds for protest by another boat, but may be a DP by the Protest Committee.

21.3 There will not be any buffet food or beverages available downstairs at CGSC before or after racing. Food and beverages might be available to order upstairs at CGSC. All food and beverages must be consumed upstairs. Seating upstairs will be limited.

## 22 **RISK STATEMENT & INSURANCE**

22.1 Competitors participate in the regatta at their own risk. See rule 4. The OA shall not accept any liability for material damage, personal injury, sickness due to COVID-19, or death sustained in conjunction with, prior to, during or after the event. Each participant warrants the suitability of his or her boat for the event.

22.2 Each participating boat shall be insured with valid third-party liability insurance with a minimum cover of USD \$1 million per event or the equivalent.

## 23. **RIGHTS TO USE NAMES & LIKENESSES**

Where consent has been given for imagery, competitors grant to the OA without payment the right in perpetuity to make, use and show any motion pictures, still pictures and live, taped or filmed television of or relating to the event

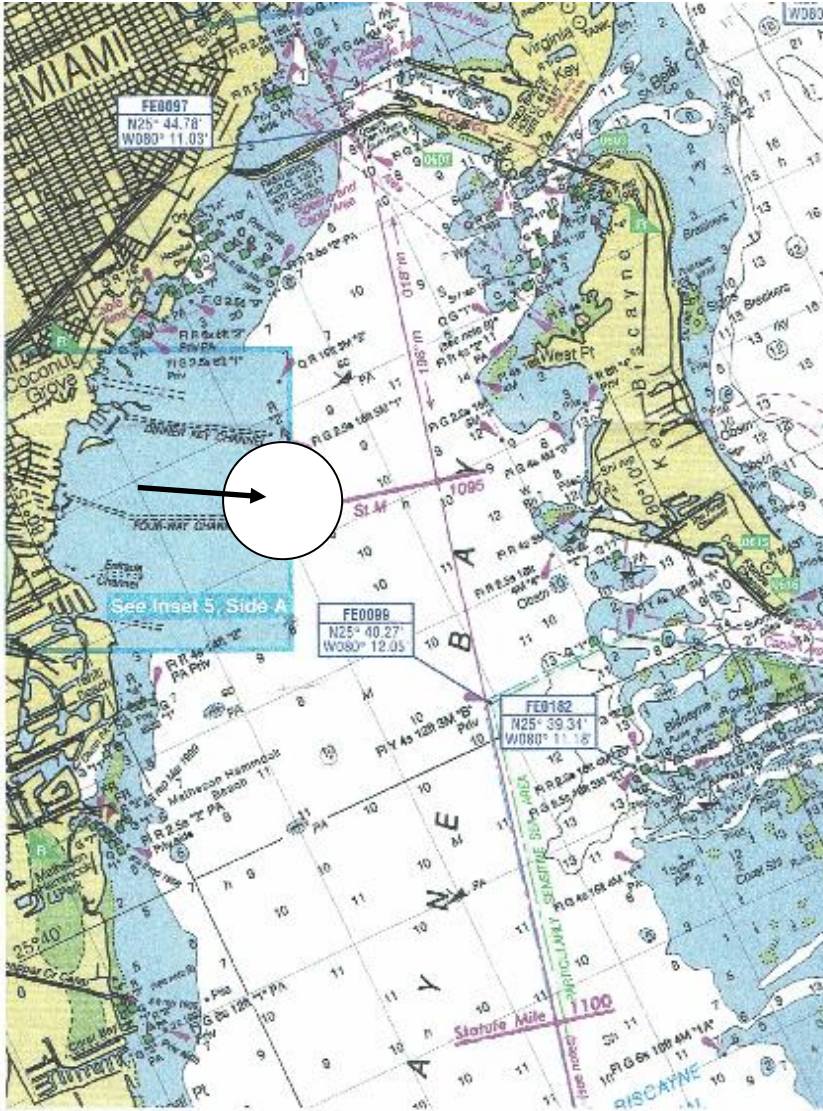
## 24. **FURTHER INFORMATION**

CGSC	USA 29er Class Assn	NA 49er/FX Class Assn
2990 S Bayshore Dr	Phil Muller, Coach	Trevor Parekh, NA President
Miami, FL 33133	<a href="mailto:philip@mullersailing.com">philip@mullersailing.com</a>	<a href="mailto:trevor@49er.ca">trevor@49er.ca</a>
Ron Rostorfer, Chair	954 257 9495	514 944 1705
<a href="mailto:ronsailon@comcast.net">ronsailon@comcast.net</a>		



# Attachment A - RACING AREA

## Biscayne Bay FL



Approximate Race Area



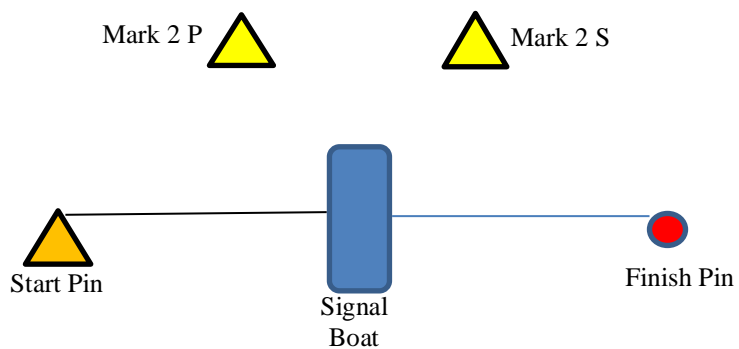
## Attachment B - COURSE DIAGRAMS



Mark 1  
49er and 49erFX



Mark 1  
29er fleet only



**COURSE # 4 - Start – Mark 1 – 2 S/P – Mark 1 - Finish**