

2021 US Windsurfing Longboard Course Race National
Championship

Clearwater Community Sailing Center

November 19-21 2021

Sailing Instructions



1. RULES

- 1.1 The regatta will be governed by the rules as defined in *The Racing Rules of Sailing* (RRS).
1.2 If there is a conflict between languages, the English text will take precedence.

2. NOTICES TO COMPETITORS

Notices to competitors will be posted on the official notice board located in between the shop and the bathrooms. To practice social distancing official notices will also be put on regatta network.

3. CHANGES TO SAILING INSTRUCTIONS

Any change to the sailing instructions will be posted before 0900 on the day it will take effect, except to the extent that any change to the schedule of races will be posted by 1800 on the day before it will take effect.

4. Signals Made Ashore

- 4.1 Signals made ashore shall be made from the flag pole in the middle of the main yard.
4.2 When flag "AP" is displayed ashore, "1 minute" is replaced with "not less than 45 minutes" in Race signal "AP". This changes race signal "AP".

5. Schedule of Races

Friday November 19th	Saturday November 20th	Sunday November 21th
930 Skippers Meeting	1000 First possible warning	1000 First Possible warning
1100 First possible warning signal	1800 Dinner CCSC	1400 Last Possible warning signal
		Awards following racing

6. Racing Area

The racing area will be in Clearwater Harbor East of Clearwater Community Sailing Center.

7. The Course And Change Of The Next Leg Of the Course

7.1 SI appendix A illustrates the course, including the general configuration of the marks, the order in which marks are to be passed, and the side on which each mark is to be left. The course length and exact configuration will be based on sailing conditions.

7.2. To change the next leg of the course, the race committee will move the original mark (or the finishing line) to a new position.

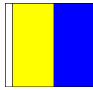

8. Marks

- 8.1 Rounding marks 1, 2S and 2P, 3 and will be Orange tetrahedrons.
8.2 The starting pin will be a yellow cylinder.
8.3 Mark 4 and the finish pin will be a red sphere.

9. The Start

9.1 Races will be started in accordance to RRS appendix U Audible Signal Racing System. (Three minute whistle sequence.)

9.2 Class flags will be as follows

Classes	Class Flag	Example
Kona, Windsurf LT, Open	Code flag K	
Techno 293, Techno Green fleet	Numeral pennant 9	

9.3 The starting line will be between a staff displaying an orange starting line flag flown from the signal boat on the starboard end and a yellow cylinder on the port end.

9.4 Race committee may attempt to hail sail numbers of OCS boats, this will not be grounds for redress.

10. The Finish

10.1 The finish line will be between the staff of orange flag on the front of the signal boat and the red sphere finish pin to leeward of the signal boat.

11. Time Limits

11.1 The time limit for the first boat in a race to sail the course and finish is ninety(90) minutes.

11.2 Boats failing to finish within fifteen (15) minutes after the first boat in a race sails the course and finishes will be scored Did Not Finish without a hearing or scored in place.

12. Protests, Scoring Reviews, Redress Requests, and Penalties.

12.1 Protest and scoring review forms are available at front desk of the CCSC.

12.2 The protest time limit is 45 minutes after the race committee signal vessel docks. The protest time limit will be posted on the official notice board as soon as practical.

13. Scoring

13.1 When fewer than five (5) races have been completed, a boat's series score will be the total of all her race scores.

13.2 When five (5) or more races have been completed, a boats series score will be the total of her race scores excluding her worst score.

13.3 When ten (10) or more races have been completed, a boat's series score will be the total of her race scores excluding her two (2) worst scores.

13.4 During Course racing (W2 or W4 courses) competitors will have the option of sailing the R2 or R4.

Competitors who take the option of the R2 or R4 course will automatically be scored behind all competitors who complete the W2 or W4 course.

14. Safety

14.1 Prior to each time a competitor enters the water they must check out by putting their safety tag on their assigned spot on the safety check out board.

14.2 Immediately upon returning to shore but not later than 30 minutes after the RC signal vessel docks competitors shall check in by removing their safety tag from safety check out board.

14.3 Failure to check in or out will result in 3 points being added to competitors last race scored with out hearing.

14.4 Support vessels shall monitor VHF channel 68.

14.5 Support boat operators must wear their engine kill cords at all times when the engine is running. Failure to do so may result in expulsion from the regatta.

14.6 Competitors under the age of 18 shall wear a buoyancy aid at all times when on the water except for brief periods of time when removing or adding clothing.

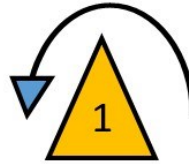
15. Disclaimer Of Liability

16.1 Competitors participate in the regatta entirely at their own risk. See RRS 3, Decision to race. The organizing authority., the race committee, officers and board of directors of CCSC will not accept any liability for material damage or personal injury or death sustained in conjunction with or prior to, during or after the regatta.

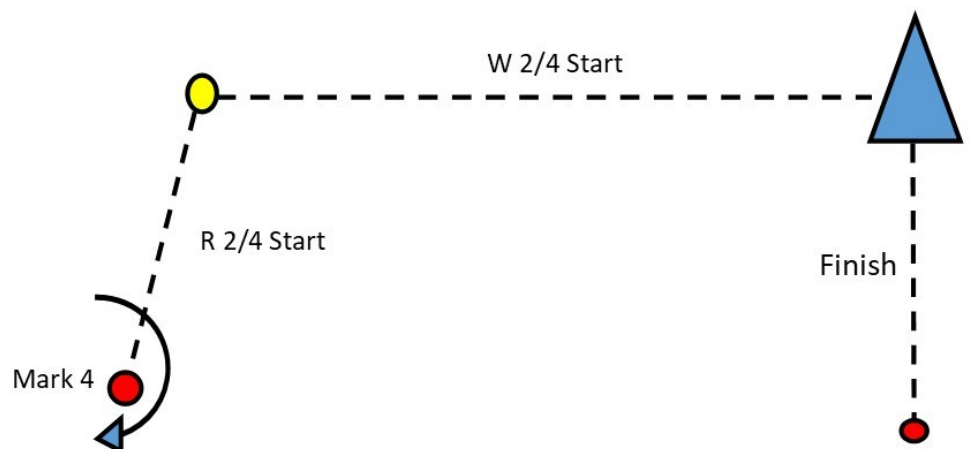
16. Prizes

17.1 Prizes will distributed as stated in the NOR.

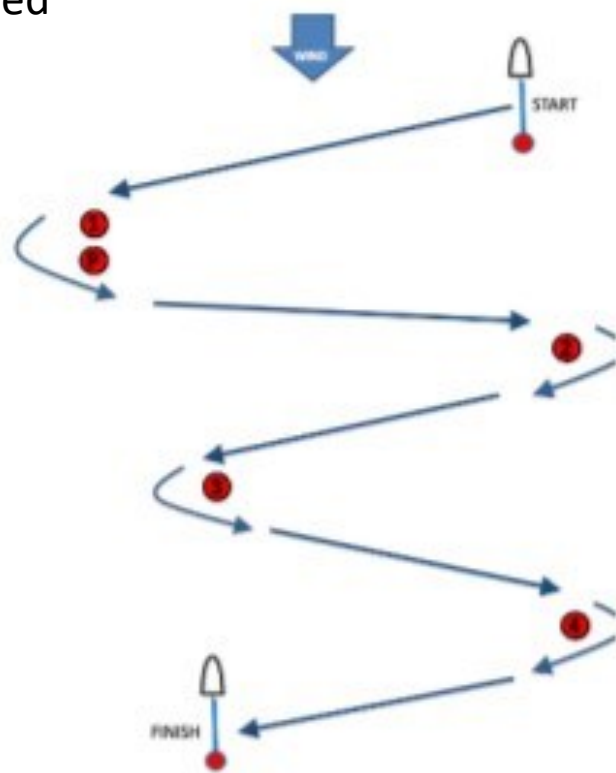
Appendix A



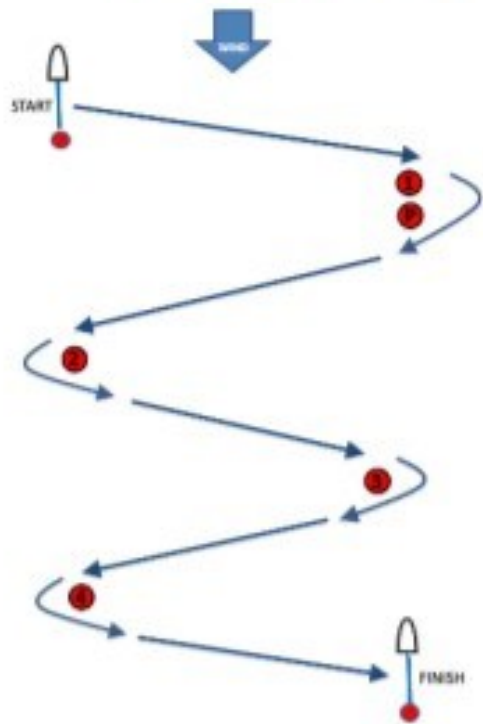
Course	Rounding Order
W 2	Start - 1 - 2s/p - 3 - Finish
W 4	Start - 1 - 2 s/p - 1 - 2s/p - 3 - Finish
R 2	Start- 3 - Finish
R 3	Start - 3 - 4 - 3 - Finish



Appendix A Continued



Signal	Mark rounding order
SS4	Start-1-P-2-3-4-Finish



Signal	Mark rounding order
PS4	Start-1-P-2-3-4-Finish