

# The Race Is Won At Night

- Concentrate !
  - Rotate Helm and Crew
  - Keep trimming
  - Use the GPS (VMG)
- It's dark out there !
  - You may become a little disoriented
  - Keep the land to the left



# Moon

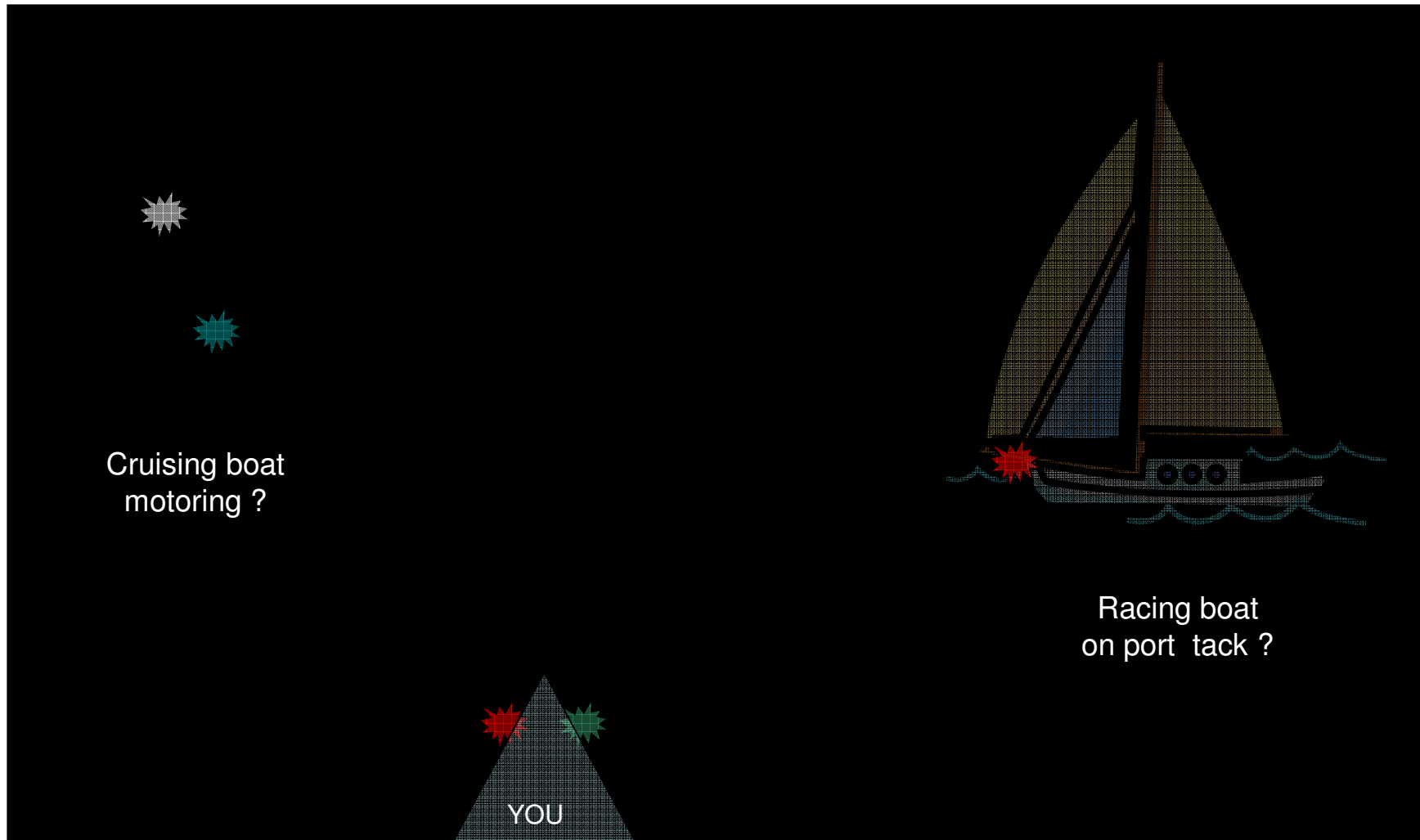
**~90% Illumination**



April 15, 2011

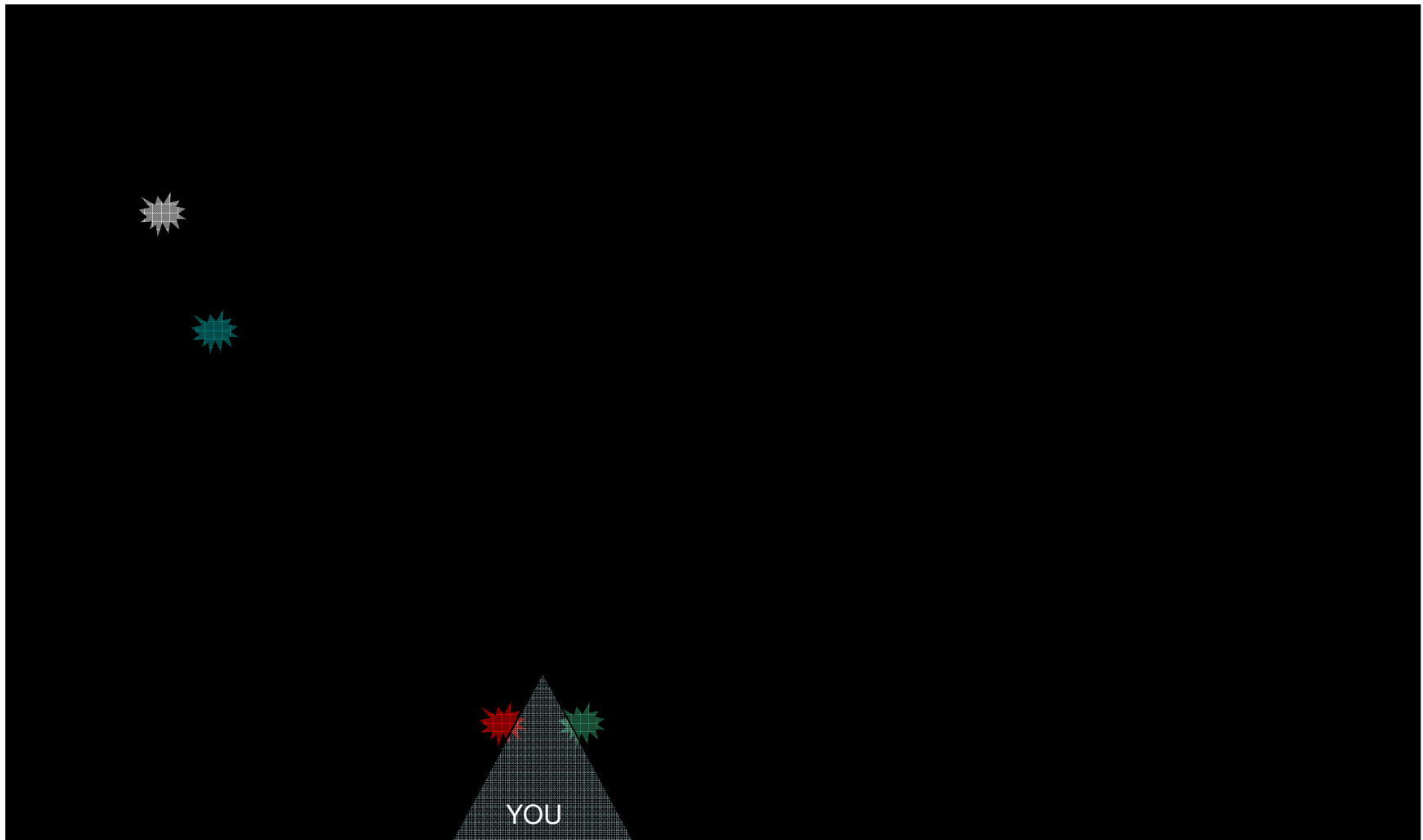
# Watch For Running Lights

25% of the Fleet are new racers...they may not know the Rules



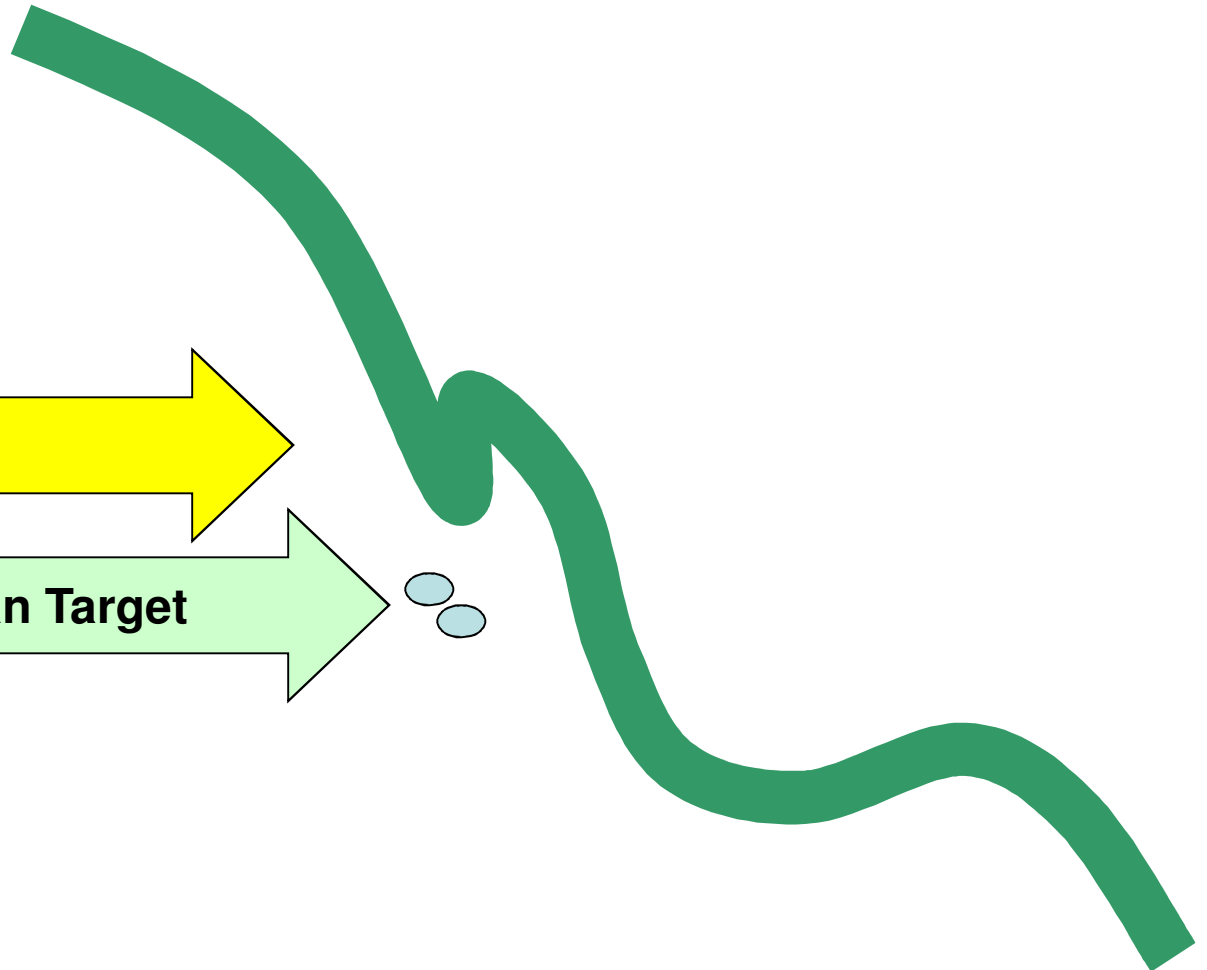
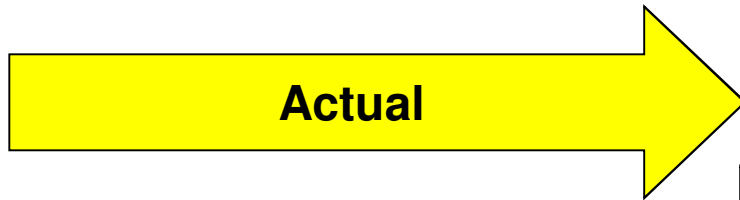
# Is There More Wind Over There ?

(Or is that Cruising boat motoring)



# Midnight

START



FINISH

**GPS says...  
We are not On-Target  
Why ?**

# Going Too Slow ?

Not “On Target” ?

- The #1 reason is the sails are trimmed in too much...
  - Particularly true in light air
  - Remember the wind usually clocks aft
  - Trim at Midnight is different than at 10 PM
- “When In Doubt...Ease It Out”
  - Check the knot meter & GPS

# Donuts Are Bad

(Particularly At Night)

- In “zero” wind, don’t get fooled by waves causing “apparent” wind
- You can generate apparent wind by steering in circles
- BUT...you aren’t moving down the course



# Remember VMG

- Are you moving the boat toward your destination
- Are you focused on where the wind is and how you will take advantage of it
- “Race” your best between 2-6 AM
  - Gain distance on the competition
  - This is when the race is won
  - Target Rosarito Beach (or further) by sunrise



# Should I Motor ?

(CRUZ boats only)

If boat speed is 2.0 knots or more, don't motor

The Engine Use Penalty will eat away any gains you might achieve

1 hr motor = >2 hrs penalty



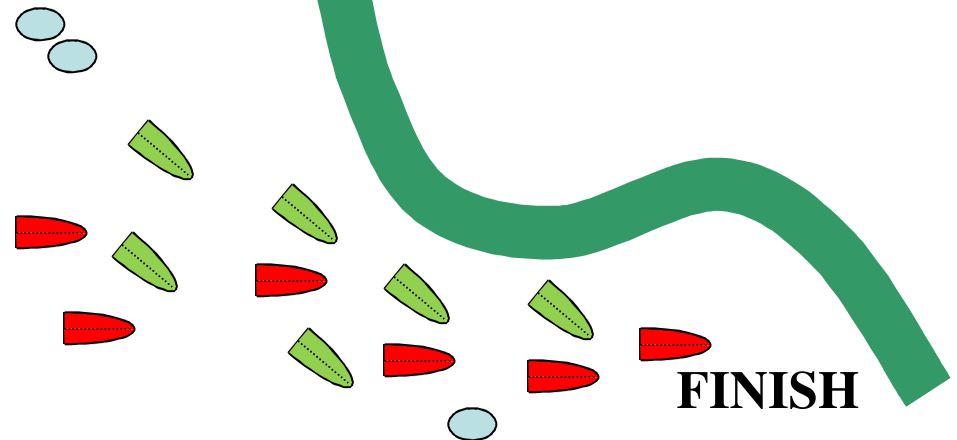
# 6 AM

## Where is Everyone ?

**START**

Some boats on rhumb-line  
Some boats still outside  
Some boats have finished

Remember port/starboard



**FINISH**

# Breakfast Is Now Being Served

Sunrise was glorious !

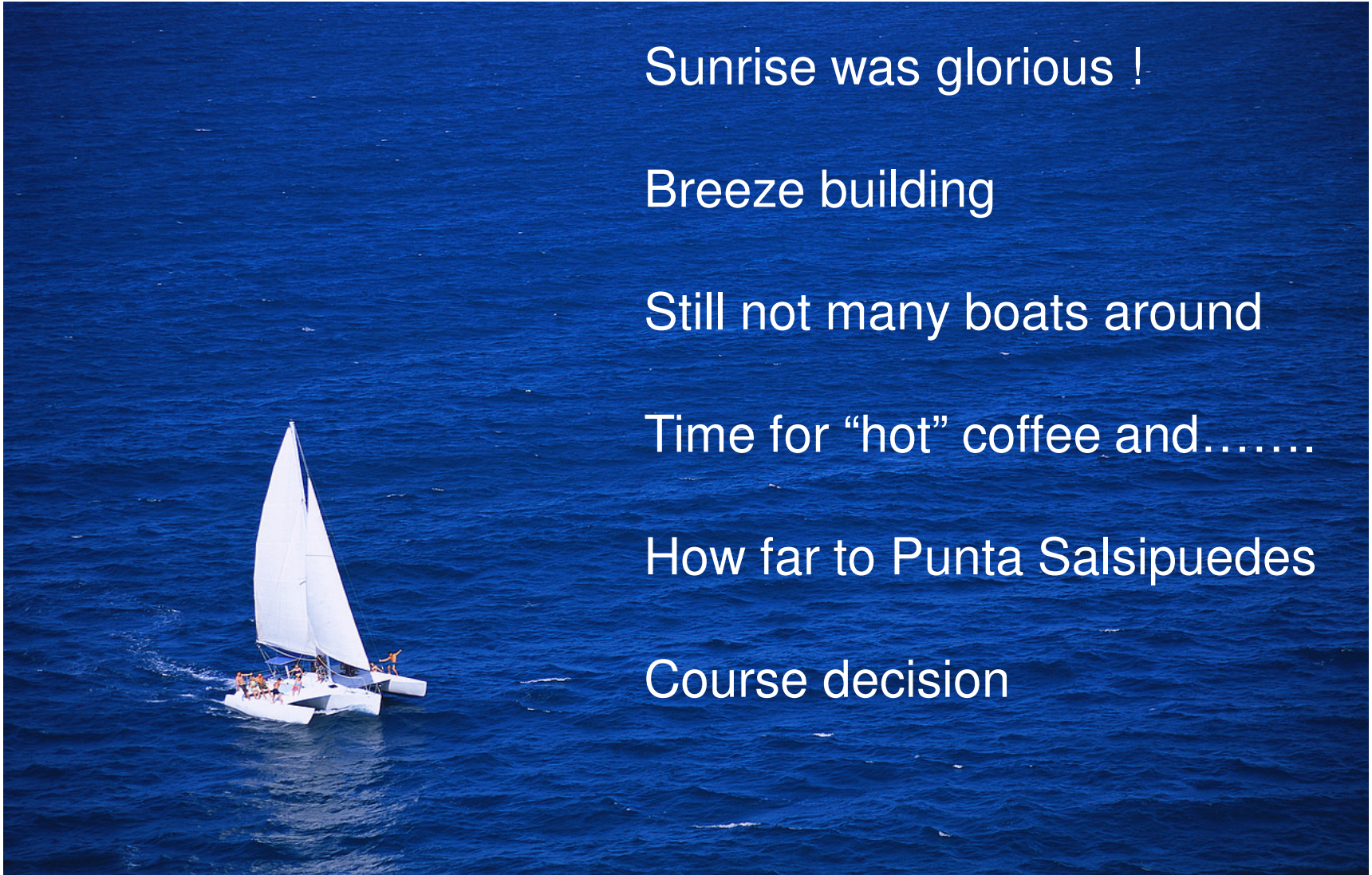
Breeze building

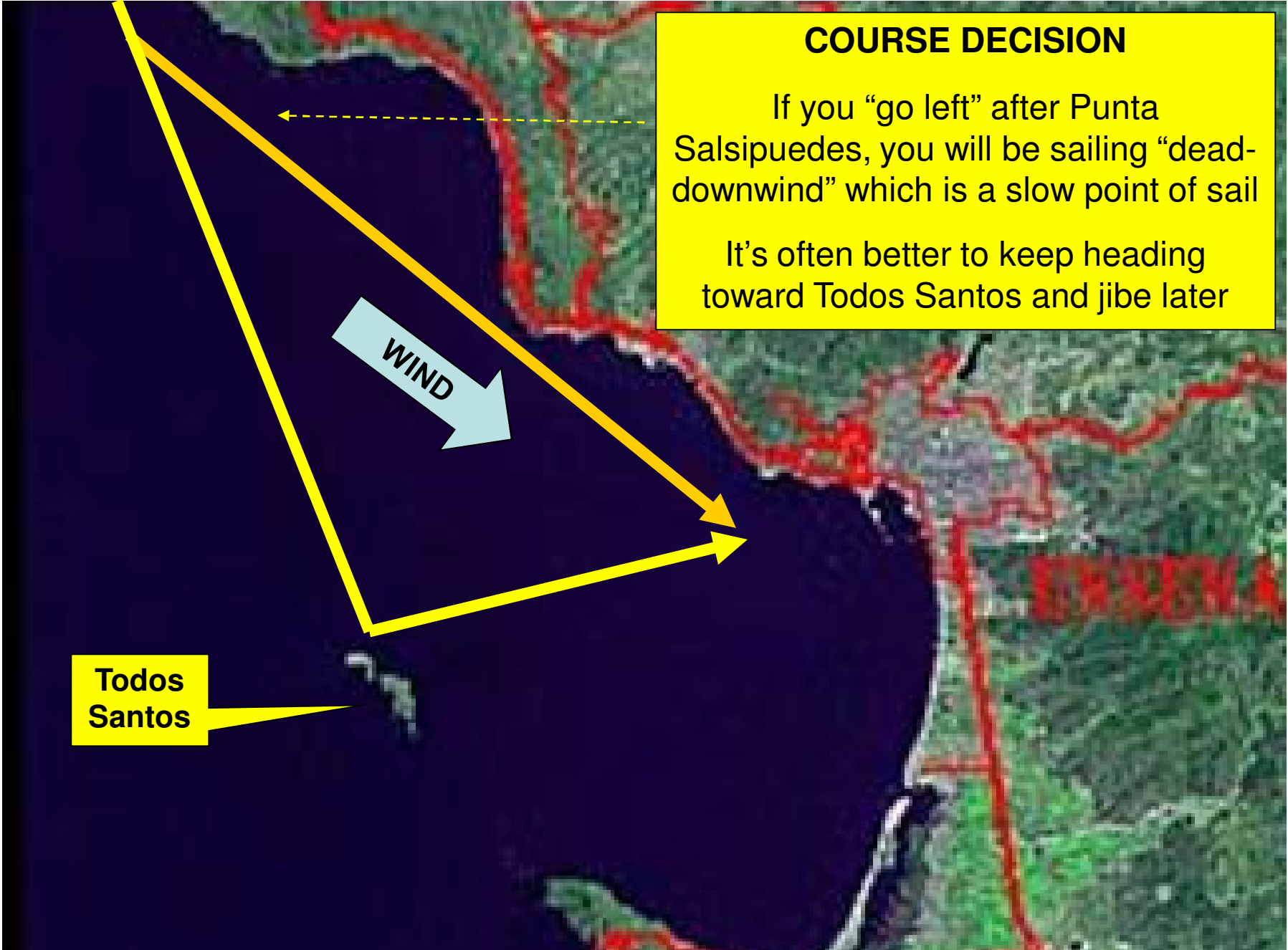
Still not many boats around

Time for “hot” coffee and.....

How far to Punta Salsipuedes

Course decision





### COURSE DECISION

If you “go left” after Punta Salsipuedes, you will be sailing “dead-downwind” which is a slow point of sail

It’s often better to keep heading toward Todos Santos and jibe later

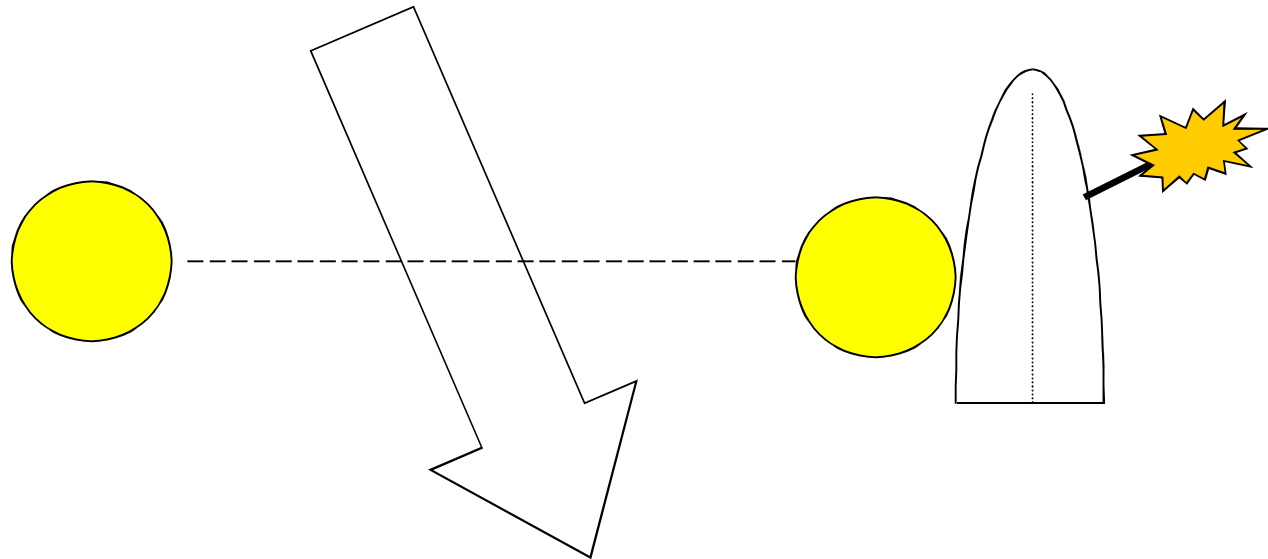
Todos Santos

# Finishing at Night

- Ensenada is a BIG CITY. Don't be fooled into heading for the lights of El Sauzal
- The wind often drains down the cliffs at night to give a bit of an offshore breeze, but there are rocks and kelp near shore
- Look for the strobe lights on the Finish Boats
- Shine a light on your Sail Numbers

# Finish Line

- Finish Line is between two yellow inflatable marks
- Finish Boat may have amber strobe light



***A Few  
Seconds  
Before  
Finishing***



***TGIF***

# You're Not Done Yet !

- Record your Finish Time on the “Finish Card” – use GPS time
- Note the boats in front and behind
- Turn the Card in at HQ





# Time To Celebrate !



# Remember to Dress Nice !



Hi Mom !

# Before You Leave Ensenada

- Thank members of Race Committee
  - It takes over 100 volunteers to run the race
- Complete the “Master’s Oath”
  - Crew returning with boat
- Re-provision the boat
  - Food & drink

# Bringing the Boat Back

- It's a long motor back (be sure you carry enough fuel)
- You will be entering the U.S. from a foreign country
- What you have and who you have on your boat will be subject to inspection by U.S. Customs
- You must clear U.S. Customs on Shelter Island in San Diego



## CAUTION

Avoid the partially  
Submerged Zuniga  
Jetty

Keep Red Buoy #8  
To Starboard

ZUNIGA JETTY

RED BUOY  
#8

# Why Are You Going ?

***Whatever the reason... have fun !***

For The Trophy ?



Tequila & Cerveza ?



For The Red Hat ?

