

# Sailing Instructions

2011



## WEST PASSAGE REGATTA



**J/105      J/80**  
**Wickford, RI, USA**  
**July 23-24, 2011**



*Wickford Yacht Club is the Organizing Authority*

**1. Rules** The regatta will be governed by the rules as defined in the Racing Rules of Sailing and the class rules of the invited classes.

**2. Notices to Competitors** Notices to competitors will be posted on the official notice board located in the Pavilion area at Wickford Yacht Club.

**3. Signals Made Ashore** Signals made ashore will be posted on the official notice board at WYC and announced on VHF Channel 78. VHF transmissions are a courtesy only and failure to hear notices will not be grounds for redress.

**4. Eligibility and Entry** The regatta is open to the J/105 and J/80 classes. All entries shall conform to the eligibility rules of the respective classes.

### 5. Event Schedule

<b>Friday</b> 1700-1800	<b>July 22, 2011</b> Check in and late registration at WYC.
<b>Saturday</b> 08:30 10:00 17:30	<b>July 23, 2011</b> Harbor start Warning signal for first race. Subsequent races to follow immediately. Casual dinner at Wickford Yacht Club.
<b>Sunday</b> 10:00 15:15	<b>July 24, 2011</b> Earliest possible start time. Subsequent races to follow immediately. No races to start after this time.

### 6. Class Flags

Class	Class Flag
J/105	Blue J/105 insignia on white background
J/80	Numeral pennant 3

**7. Racing Area** See Appendix A. The course area to be used will be posted on the notice boards 2 hours before the scheduled starting time each day and announced periodically over VHF channel 78.

**8. Check In** All boats are required to check in at the Race Committee signal boat prior to the warning signal. Additional copies of the Sailing Instructions will be available from the signal boat.

## 9. Courses and Marks

**9.1** See Appendix B for course diagrams and descriptions.

**9.2** The weather mark on course **W** will be a 5' bright orange West Marine "tomato".

**9.4** Gate marks will be 4' red/orange APS cylinders. If only one gate mark is in the water, round it to port.

**9.5** Offset marks will be small orange Bema or APS "tomatoes".

**9.6** The course to be sailed will be displayed on a white board on the port side of the signal boat no later than the warning signal.

## 10. Start

**10.1** The starting line will be between a staff displaying orange flag on the signal boat and an orange tetrahedron on the port end of the starting line or a pin end boat displaying an orange flag.

**10.2** Boats whose warning signal has not been made shall avoid the starting area.

**10.3** A boat starting later than 4 minutes after her starting signal will be scored Did Not Start without a hearing.

**11 Change of the Next Leg of the Course** The direction and distance to the next mark may be changed up to 10 degrees without any signal. The new mark shall be in place before any boat begins the leg. This changes **RR 33**.

**12. Finish** The finish will be between a yellow tetrahedron located to windward and to starboard of the signal boat and a blue flag on the starboard side of the signal boat.

**13. Penalty System** For all classes, a boat that may have broken a rule of Part 2 while racing may take a penalty by taking a One-Turn Penalty including one tack and one gybe that, in all other respects, complies with rule 44.2. This changes rule 44.1. However, if a boat breaks a rule of Part 2 within the three hull length zone of any rounding or finishing marks her penalty shall be a Two-Turns Penalty in compliance with rule 44.2.

## 14. Time Limit and Target Times

Time limits and target times for the first boat are as follows:

<i>Class</i>	<i>Time limit</i>	<i>Target time</i>	<i>Time limit after the first boat finishes</i>
All Classes	90 minutes	50 minutes	15 minutes

## 15. Protests

**15.1** Protest forms will be available at the regatta desk at Wickford Yacht Club. Protests and requests for redress shall be delivered to the regatta desk at Wickford Yacht Club within the appropriate time limit.

**15.2** The protest time limit is 90 minutes after the last boat has finished the last race of the day in its class and will be posted on the official notice board.

**15.3** Protests will be heard as soon as possible after protests have been filed.

**16. Scoring:** The Low Point Scoring System, Appendix A of the racing rules will apply. There will be one throw-out if 4 or more races have been completed. Eight races are scheduled, of which one shall be completed to constitute a series.

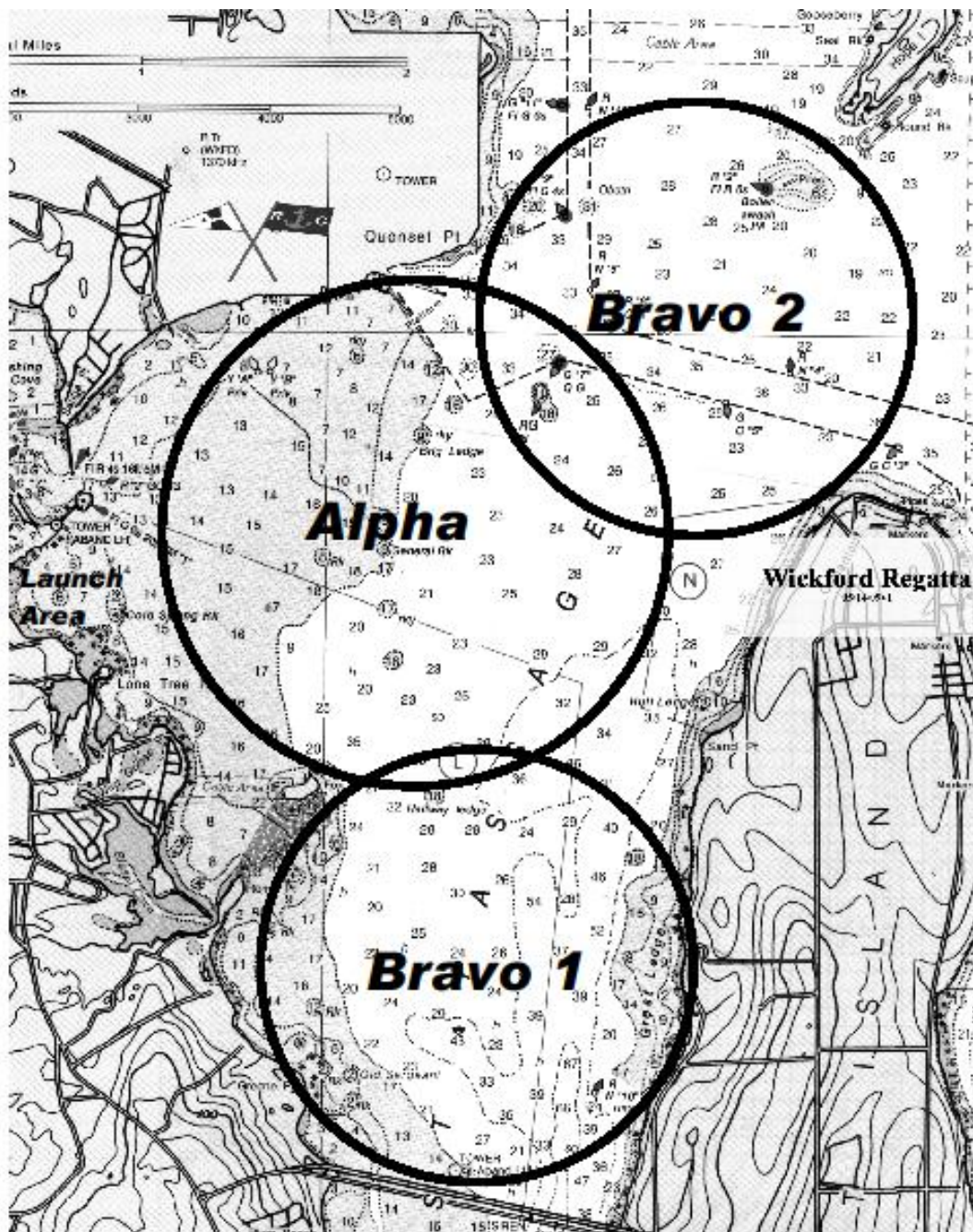
**17. Prizes** Prizes will be awarded to the top three boats in each class. The trophy presentation will be held on the WYC deck after the racing on Sunday.

**18. Disclaimer of Liability:** Competitors participate in the regatta entirely at their own risk. See rule 4, Decision to Race. The organizing authority will not accept any liability for material damage or personal injury or death sustained in conjunction with or prior to, during, or after the regatta.

# Appendix A

## Course Areas

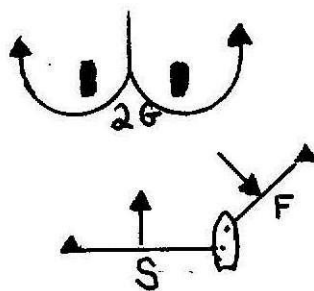
### Tide Times



	Lo	Hi	Lo
Sat 7/23	7:05 AM 0.60'	2:17 PM 3.50'	8:22 PM 1.11'
Sun 7/24	8:01 AM 0.68'	3:06 PM 3.48'	9:41 PM 1.06'

# Appendix B - Course diagram

## Courses WM



Windward Leeward - Modified  
WM=S,1,2G,1,2G,F