

Coronado Yacht Club
1631 Strand Way
Coronado CA 92118
(619)435-1848
coryclub@coronadoyc.org
<http://race.coronadoyc.org>

SAILING INSTRUCTIONS

Longstreth Series

October 29th, 2011, December 10th, 2012 & January 7th, 2012

1 RULES

- 1.1 The regatta will be governed by the rules as defined in *The Racing Rules of Sailing (RRS)* 2009-2012 including the prescriptions of US Sailing; US Coast Guard “Navigational Rules, International Inland” 050-012-001922-8 (Inland Rules); the rules of Performance Handicap Racing Fleet San Diego (PHRF-SD) and by these Sailing Instructions (SI’s). Racing boats encountering other racing boats are governed by RRS. Racing boats encountering non-racing boats shall conform to the Inland Rules. Interference with deep draft vessels will be grounds for disqualification by the Race Committee (RC).
- 1.3 This is a three race series in three classes with pursuit starts. The course is Random Leg Course (RLC) as defined by PHRF-SD. The organizing authority is the Coronado Yacht Club (CYC).

2 ELIGIBILITY AND ENTRY

- 2.1 The regatta is open to members of all yacht clubs and sailing associations recognized by the US Sailing.
- 2.2 The skippers of eligible boats may enter ONLY online at <http://race.coronadoyc.org>. Entries or changes to handicap or spinnaker status must be made no later than 0930 on race day. Changes after 0930 WILL NOT be accepted.
- 2.3 Class 1.....PHRF-SD RLC rating of 113 or less
Class 2.....PHRF-SD RLC rating of 114 or higher
Class 3.....CYC Arbitrary Handicap Rating or PHRF-SD RLC rating
- 2.4 CYC Arbitrary Handicap Rating information is located at <http://race.coronadoyc.org>.

3 NOTICES TO COMPETITORS

Notices to competitors, including changes to these SI’s, will be posted on the regatta page at <http://race.coronadoyc.org> and at the R/C Notice Board located on the CYC clubhouse porch.

4 SIGNALS MADE ASHORE

Signals made ashore will be displayed from the CYC clubhouse race committee flag hoist.

5 SCHEDULE OF RACES

- 5.1 Registration: Due by October 29th, 2011 at 0930. Late registration for individual races may be done as late as 0930 on each race day.
- 5.2 Dates of racing: October 29th, 2011, December 10th, 2012 & January 7th, 2012. One race per day.
- 5.3 Race day schedule:
 - 0930 each race day: Deadline to register or to confirm class and spinnaker offset changes online.
 - 1045 each race day: Pursuit start times will be available at the CYC front desk.
 - 1200 each race day: Approximate start time for the first starter.
 - 1630 each race day: Deadline to complete course.

6 CLASS FLAGS

- 6.1 A single red flag will serve as the class flag for the inverted start sequence.
- 6.2 Competitors are encouraged to fly their class pennants while racing with numeral pennants denoting classes ONE, TWO and THREE.

7 TIME LIMITS

- 7.1 Boats finishing after 1630 will be scored Did Not Finish (DNF).
- 7.2 Boats not finishing within one hour of the first finisher in their class will be scored (DNF).
- 7.3 Failure to meet these time limits will not be grounds for redress. This limit changes rule 35.

8 THE COURSE & MARKS

- 8.1 The course is random leg made up of both inflatable buoys and Glorietta Bay (GB) and San Diego Bay (SD) navigational buoys. "Diver" is an orange tetrahedron located approximately 60 meters south of the Starting Line. "A" is an orange tetrahedron located approximately 1.1 nm from SD26A on a bearing of 191 degrees magnetic (LAT/LONG: N 32 39.809/W 117 08.841). The starboard end of the Starting Line is a piling with a barber pole design located at the mouth of the CYC guest docs. The port end of the starting line is an orange tetrahedron.
- 8.2 Course length = 11.26 Nautical Miles

1. Start at CYC Clubhouse	9. A...(S)
2. Diver...(P)	10. SD 32...(P)
3. GB 8...(P)	11. SD 26A...(P)
4. GB 1...(S)	12. GB 1...(P)
5. SD 26A...(S)	13. GB 8...(S)
6. SD 34...(S)	14. Diver...(S)
7. A...(S)	15. Club Finish
8. SD 34...(S)	
- 8.3 Attachment (1) approximates the course.

9 THE START

- 9.1 This is an inverted start race. Start times, to the second, will be assigned to each racer with the high handicap racer starting at approximately 12:00:00.
- 9.2 The start times will be available at the CYC front desk by 1045 on each race day.
- 9.3 Each race will be started in accordance with rule 26 with warning signal made 5 minutes before the high handicap start. This start time will commence the clock for subsequent starters. As a courtesy, multiple horns will be sounded one minute prior to the warning signal.

TIME	EVENT	FLAG	SOUND
6 min prior	Courtesy signal		Multiple Horns
5 min prior	Warning	Raise red flag	1 horn
4 min prior	Preparatory	Raise “P” flag	1 horn
1 min prior	One-minute	Remove “P” flag	1 long horn
00:00:00	Start	Remove Red Flag	1 horn
xx:xx:xx	Subsequent starts at published times		1 horn

9.4 The race committee will NOT hail on course side (OCS) boats.

10 PENALTIES

Rule 44.1 is changed so that the Two-Turns Penalty is replaced by the One-Turn Penalty.

11 SCORING

11.1 The Low Point System of Appendix A of RRS will apply.

11.2 One race is required to be completed to constitute a series.

11.3 There will be no throw outs.

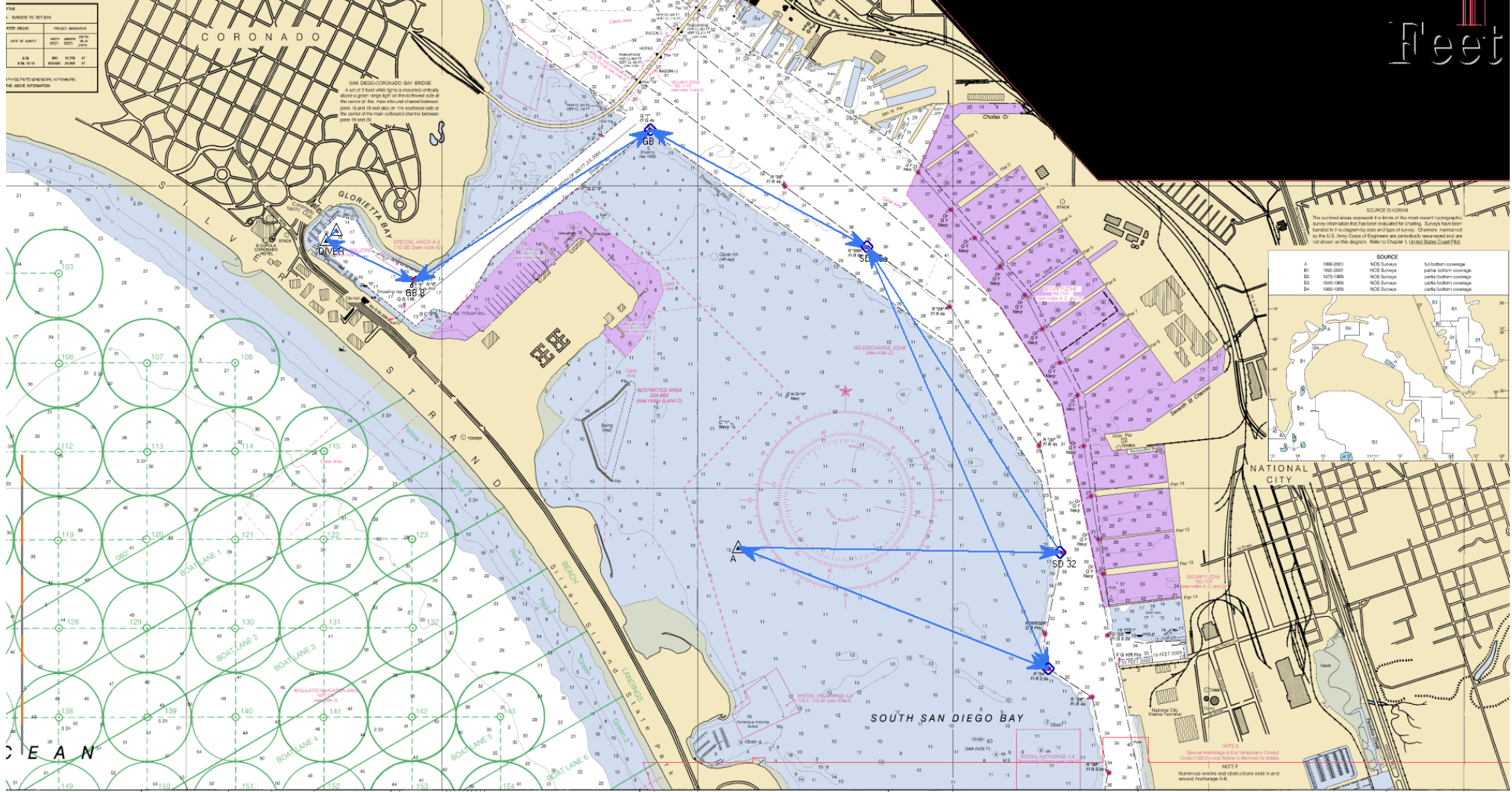
12 RADIO COMMUNICATION

The Race Committee will be monitoring channel 69.

14 FURTHER INFORMATION

For further information please contact Alan Sappenfield at (619)435-2608 or brg@hqrpm.com.

SOURCE TO DETAIL	
DATE OF SURVEY	PROJECT NUMBER
DATE OF SURVEY	PROJECT NUMBER
DATE OF SURVEY	PROJECT NUMBER
DATE OF SURVEY	PROJECT NUMBER



SOURCE DIAGRAM
 The outlined areas represent the limits of the most recent hydrographic survey information that has been evaluated for charting. Surveys have been limited in this diagram to date and type of survey. Channels maintained by the U.S. Army Corps of Engineers are periodically re-surveyed and are not shown on this diagram. Refer to Chapter 1, United States Coast Pilot.

SOURCE		COVERAGE
A	1990-2001	full bottom coverage
B1	1990-2001	partial bottom coverage
B2	2000-1990	partial bottom coverage
B3	1940-1990	partial bottom coverage
B4	1950-1959	partial bottom coverage



NOTES
 Special Attention: A-16 Temporary Channel
 Closed 11:00 AM - 12:00 PM - Marine Corps
 Numerous wrecks and obstructions exist in and around anchorage A-6.