



# Sailing Instructions

## Wickford Regatta 2012



*Wickford Yacht Club is the Organizing Authority*

**1. Rules:** The regatta will be governed by the rules as defined in the Racing Rules of Sailing and the class rules of the invited classes.

**2. Notices to Competitors:** Notices to competitors will be posted on the official notice board located on the south wall of the concessions stand near the race office tent. There will be a temporary notice board at Wickford Yacht Club during the dinner on Saturday night.

**3. Signals Made Ashore:** Signals made ashore will be made orally from the vicinity of the race office tent. For the Viper class the course area location and other signals may be made on VHF channel 78, orally in the vicinity of the Wilson Park launch ramp, or orally from the vicinity of the marina office at Brewer's Wickford Cove Marina. The competitors meeting will not be duplicated. All official announcements will be posted on the official notice board. This changes RRS 90.2.(c)

**4. Eligibility and Entry:** The regatta is open to the **International 420, Club 420, International 505, Viper, F-18 and A-Cat** classes. All entries shall conform to the eligibility rules of the respective classes.

### 5. Event Schedule

<b>Friday</b>	<b>May 18, 2011</b>
1500-1800	Check in and late registration
<b>Saturday</b>	<b>May 19, 2011</b>
0830-1000	Check in and late registration
1000	Competitors meeting in the vicinity of the race office tent.
1200	Warning signal first race. Subsequent races to follow immediately
<b>Sunday</b>	<b>May 20, 2011</b>
1000	Earliest possible start time. Subsequent races to follow immediately.
1500	No races to start after this time.

### 6. Class Flags and Course Area Assignments

Class	Class Flag	Course Area
I-420	Numeral pennant #5 – yellow and blue vertical bands	Alpha
C-420	Numeral pennant #6 – black and white horizontal bands	Alpha
505	Numeral pennant #2 – blue pennant with white circle	Bravo
F-18	Pink insignia on white background	Bravo
Viper	Numeral pennant #3 – red, white, blue vertical bands	Bravo
A-Cat	Numeral pennant #4 – white cross on red background	Bravo

**7. Racing Area:** See Appendix A. The Bravo course to be used will be posted on the notice board and announced on VHF Channel 78 90 minutes before the scheduled starting time each day.

## 8. Courses and Marks

- 8.1 See Appendix B for course diagrams and descriptions.
- 8.2 All turning marks other than gate marks and the short weather mark on Bravo Course will be 5' bright orange West Marine "tomatoes".
- 8.3 Gate marks will be 4' red/orange APS cylinders.
- 8.4 The short weather mark on Bravo course will be a 5' orange tetrahedron.
- 8.5 Offset marks on Bravo course will be 2' orange "Bemas"
- 8.6 No later than the warning signal the race committee signal boat will display the course designation for the next class to start.
- 8.7 When sailing course **W**, mark **WS** may not be in position and vice versa. In this situation the mark not in position at the start of the leg may be set during the leg for another class. It is the competitor's responsibility to sail to the correct weather mark.
- 8.8 Course **WS** will only be used on Bravo Course.

## 9. Start

- 9.1 Races will be started by using RRS 26 for all classes except 505.
- 9.2 The 505 class will use a gate start procedure that is described in Appendix C. This changes RRS 26.
- 9.3 The starting line will be between a staff displaying orange flag on the signal boat and a 2' bright orange "Bema" buoy on the port end of the starting line or an orange flag on the port end boat.
- 9.4 Boats whose warning signal has not been made shall avoid the starting area.
- 9.5 A boat starting later than 4 minutes after her starting signal will be scored Did Not Start.
- 9.6 The intended starting order will be announced at the competitors meeting on Saturday and will be posted on the notice board before 9:00 AM on Sunday. The starting order may be changed over the course of the day to minimize delays.
- 9.7 The class flag of the next class to start will be flown from the stern of the signal boat during the starting sequence of the preceding class or prior to the starting sequence if no class is in sequence and will remain flying from that location until approximately 1 minute before the warning signal of that class. A series of short sound signals will be made when the class flag is removed from the stern of the signal boat.
- 9.8 In the event that the class designated to start next is not prepared to start either at the scheduled time, after any postponement, or after being signaled according to SI 9.6, code flag L and the class flag of the new class will be displayed from the stern of the signal boat with a sound signal. Code flag L and the class flag will be removed according to SI 9.6.

**10. Change of the Next Leg of the Course:** The distance and direction to the next mark up to a maximum of 10 degrees may be changed without any signal. The new mark shall be in place before any boat begins the leg. This changes **RRS 33**. Subsequent legs may be changed to maintain the course shape.

## 11. Finish

- 11.1 On courses **I** and **O** (trapezoid courses) the finish shall be between a blue flag on the finish boat and a 4' red/orange APS cylinder.
- 11.2 On courses **W** and **WS** the finish shall be between a blue flag on the starboard side of the signal boat and a yellow tetrahedron. There will be an 2' bright orange keep off buoy approximately 100' off the starboard side of the committee boat which must be left to starboard. The keep off buoy ranks as a mark, but may not be precisely on the finish line.

**12. Penalty System:** For the A-Cat, and F-18 classes, RRS 44.1 is changed so that the Two-Turns Penalty is replaced by a One-Turn Penalty.

**13. Time Limit and Target Times**

Time limits and target times for the first boat are as follows:

<i>Class</i>	<i>Time limit</i>	<i>Target time</i>	<i>Time limit after the first finisher</i>
All Classes	80 minutes	40 minutes	15 minutes

**14. Protests**

**14.1** Protest forms are available in the race office tent. Protests and requests for redress shall be delivered there within the appropriate time limit.

**14.2** The protest time limit is 60 minutes after the last boat has finished the last race of the day in its course area and will be posted on the official notice board.

**15. Scoring:** The Low Point Scoring System, Appendix A of the racing rules will apply. There will be one throw-out if 4 or more races have been completed. Eight races are scheduled, of which one shall be completed to constitute a series.

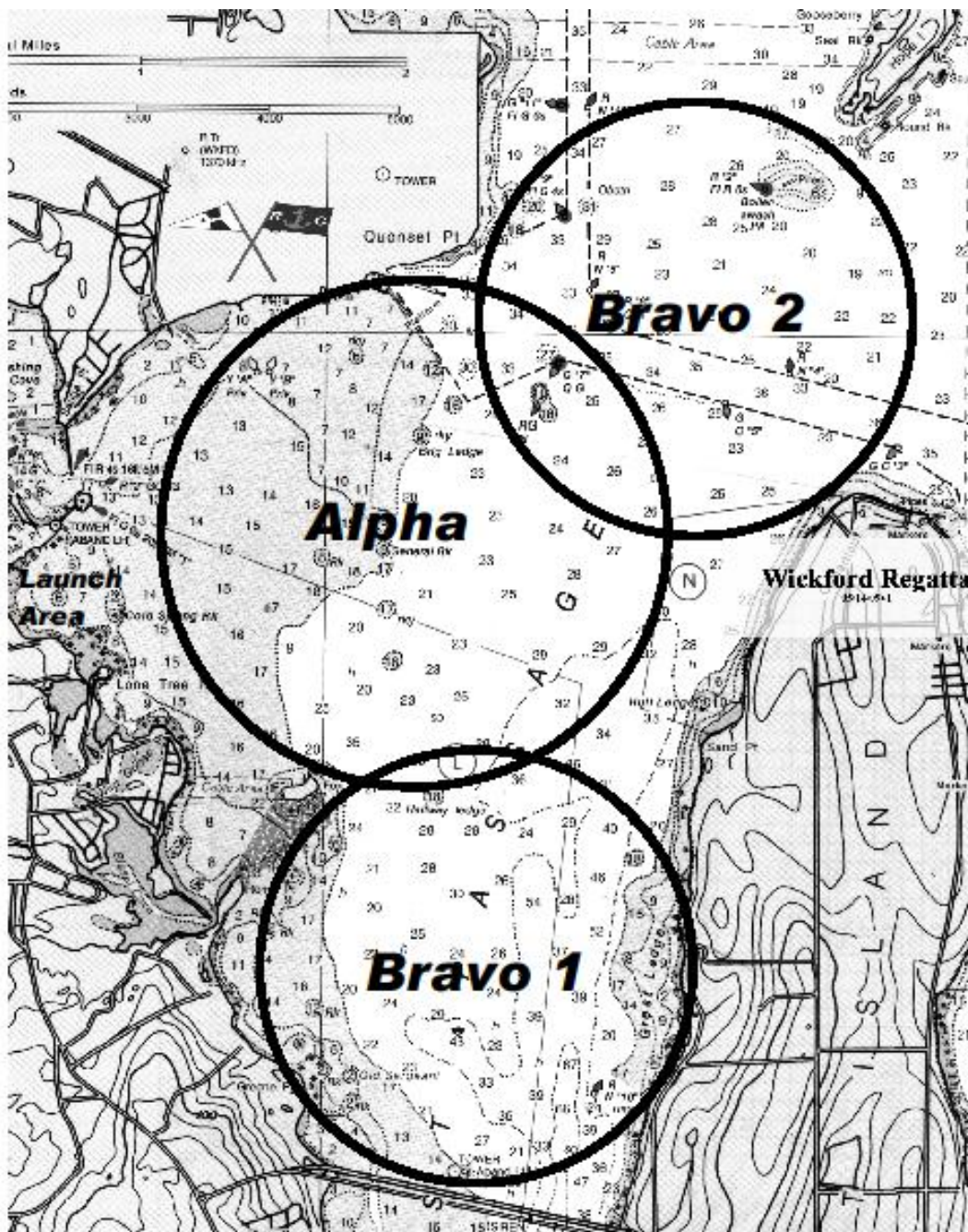
**16. Safety:** Each competitor will be responsible for wearing an USCG approved PFD at all times on the water. This changes RRS 40.

**17. Prizes:** Prizes will be awarded based upon the number of entries received by the end of advanced registration. 10 or more entries, top three. Fewer than 10, top two. Equal prizes will be awarded to both skipper and crew, except that a single trophy will be awarded in the Viper Class.

**18. Disclaimer of Liability:** Competitors participate in the regatta entirely at their own risk. See rule RRS 4, Decision to Race. The organizing authority will not accept any liability for material damage or personal injury or death sustained in conjunction with or prior to, during, or after the regatta.

# Appendix A

## Course Areas



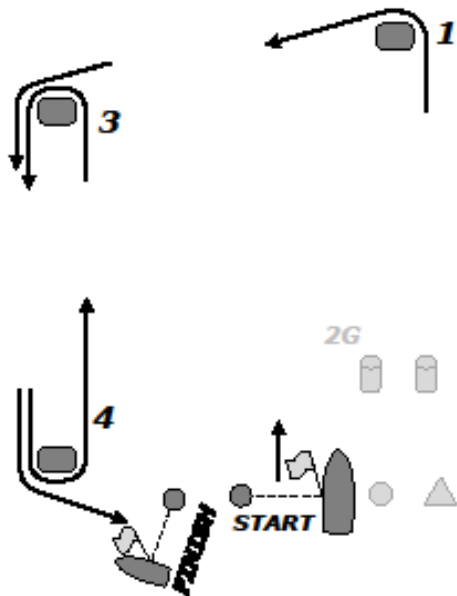
### Tide Times and Heights

	Hi	Lo	Hi
Sat 19	7:39 AM 3.47	12:33 AM 0.17'	7:53 PM 4.19'
Sun 20	8:16 AM 3.52'	1:14 PM 0.13'	8:28PM 4.18'

## Appendix B – Course Diagrams

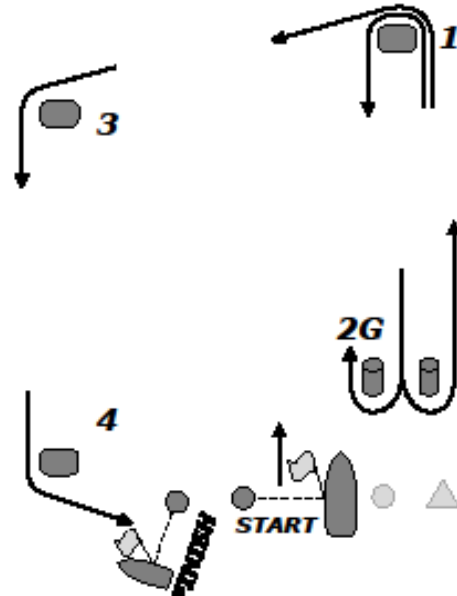
### COURSE **O** Trapezoid Outer Loop

**O** = Start, 1, 3, 4, 3, 4, Finish



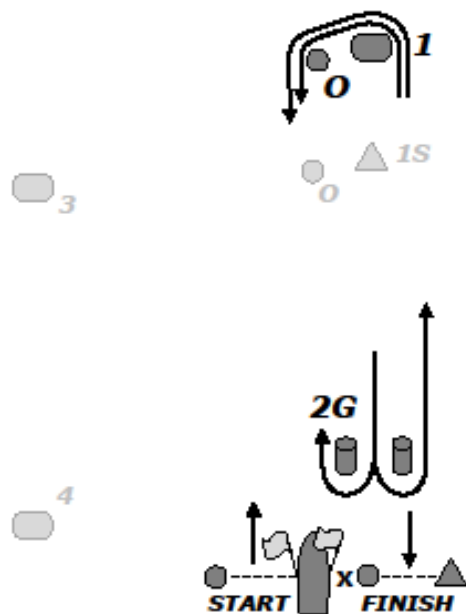
### COURSE **I** Trapezoid Inner Loop

**I** = Start, 1, 2G, 1, 3, 4, Finish



### COURSE **W** Windward Leeward

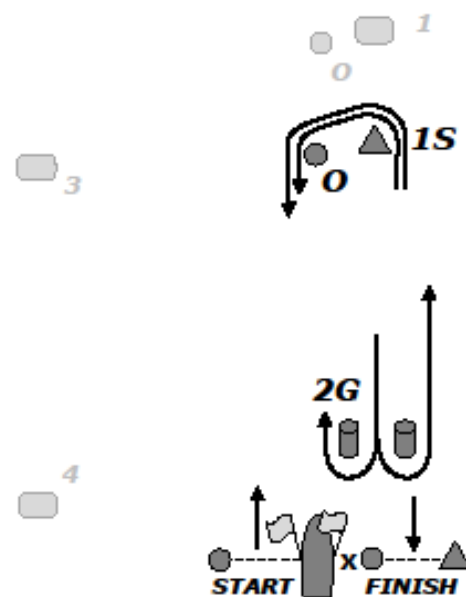
**W** = Start, 1, O, 2G, 1, O, Finish



### COURSE **WS** Windward Leeward-Short

**WS** = Start, 1S, O, 2G, 1S, O, Finish

NOTE: Bravo Course Only.



## **Appendix C – 505 Gate Start Procedure**

- C1** Races will be started using RRS 26 with the warning signal made 5 minutes before the starting signal from the Race Committee Boat.
- C1.1** The Race Committee shall raise code flag G at the warning signal signifying a gate start.
- C1.2** Before each start, the Race Committee Boat will display the maximum amount of time that the gate will remain open after the starting signal on a white board on the port side of the Race Committee Boat.
- C2** The starting line (except for the Pathfinder) shall be between the Port Limit Mark and the center of the stern of the Pathfinder.
- C2.1** The Port Limit Mark will be the pin end of the starting line as described in SI9.3.
- C3** The Pathfinder for the first race sailed will be appointed by the Race Committee. The Pathfinder for subsequent races will be the boat that finished 4<sup>th</sup> in the preceding race. When this boat is unable to race or has acted as Pathfinder previously, the Pathfinder will be appointed by the race committee and will normally be the boat that finished 5<sup>th</sup> in the preceding race.
- C3.1** The national letters and sail number of the Pathfinder will be posted on the official notice board for the first scheduled race of the day, and on the Race Committee Boat for any subsequent races that day.
- C3.2** Prior to the preparatory signal the Pathfinder shall report to the Race Committee Boat.
- C4** Approximately 5 seconds prior to the starting signal the Pathfinder shall round the Port Limit Mark (leaving it to port) and begin a close-hauled port tack.
- C5** The gate is considered open when the Pathfinder clears the Port Limit Mark.
- C5.1** A boat starts when, having been entirely on the pre-start side of the starting line before the gate opens, any part of her hull, crew or equipment crosses the starting line in the direction of the first mark. This changes the definition in the RRS.
- C6** All boats (except for the Pathfinder) shall start on starboard tack after the Pathfinder clears the Port Limit Mark. RRS 29.2, Individual Recall, shall not apply.
- C7** The Pathfinder shall sail its close-hauled port tack course until the gate is closed or until the last boat crosses the starting line, after which it ceases to be a starting mark and may continue its course or tack onto starboard tack.
- C8** The gate is closed once all competitors have started or the allotted time defined in sailing instruction C1.2 has passed, whichever occurs first. The Race Committee will signal the close of the gate by lowering flag G with a short sound signal. Thereafter no boat shall start.
- C9** Before starting, a boat shall not interfere with the Pathfinder. Any boat that interferes with, or that causes another boat to interfere, or that is on the port side of the Pathfinder as it opens the gate, shall retire from that race and shall be ineligible for any restarts of that race unless the infringing boat can satisfy the Race Committee that its actions were caused either by another boat not having right of way or by some other unavoidable circumstance. This changes RRS 36. Note that making contact without impeding progress is not considered interference and hence an infringing boat is not disqualified.