



OPENING DAY BEER CAN BASH REGATTA

Saturday Feb. 11th 2012

Waikiki Yacht Club

Honolulu, Hawaii

SAILING INSTRUCTIONS

1 RULES

The regatta will be governed by the rules as defined in *The Racing Rules of Sailing as updated January 2010*, the prescriptions of US SAILING, pertinent Class/Fleet Rules, by the Waikiki Yacht Club Standing Sailing Instructions, the Notice of Race and these Sailing Instructions.

1.1

Racing rule 52 will be changed as follows:
The use of powered winches is authorized.

2 ENTRIES

Eligible yachts may be entered by going to the Waikiki Yacht Club Web Site and register online. The NOR is also available there. <http://www.waikikiyachtclub.com/RE/Regatta-Network.aspx>

3 NOTICES TO COMPETITORS

Notices to competitors will be posted on the official notice board located in the WYC card room.

4 CHANGES TO THE SAILING INSTRUCTIONS

Any change to the sailing instructions will be posted before 0900 on the day it will take effect, except that any change to the schedule of races will be posted by 2000 on the day before it will take effect.

5 SIGNALS MADE ASHORE

Signals made ashore will be displayed from the WYC flagpole.

6 SCHEDULE OF RACING

The first warning will be at 1355* Feb 11, 2012.

Subsequent starts will be in five minute intervals.

* Racing will be postponed until all entered boats have received the "Blessing of the Fleet" from the Opening Day VIP Boat and arrived in the starting area.

7 CLASS FLAGS

The class flags and start sequences are:

PHA	Black with 1
PHB	Yellow with 1
PH C	Light Green with C
Multihull	Blue with M

8 RACING AREA

The racing area will be between Diamond Head and Honolulu Harbor entrance. See attached maps for course location and configuration.

9 COURSES

Course 1: Start – Mark1 to Port – Mark 2 to Port – Finish

Cruiser Course: Start – Mark 1 to Port – HH to Port – Finish

Multihull Course: Start – Mark 1 to Port- HH to Port – Mark 2 to Port – Finish

See attached maps for more details.

10 STARTING AND FINISHING LINE

The starting and finishing line will be between two yellow inflatable tetrahedrons.

11 TIME LIMIT

The time limit for the race will be one and a half hour for the first boat to finish.

12 PROTESTS

Protests shall be delivered to WYC within 45 min. after the race committee boat docks. The protest time limit and a list of protests received will be posted on the notice board. Hearings will be held as soon as possible after racing at WYC.

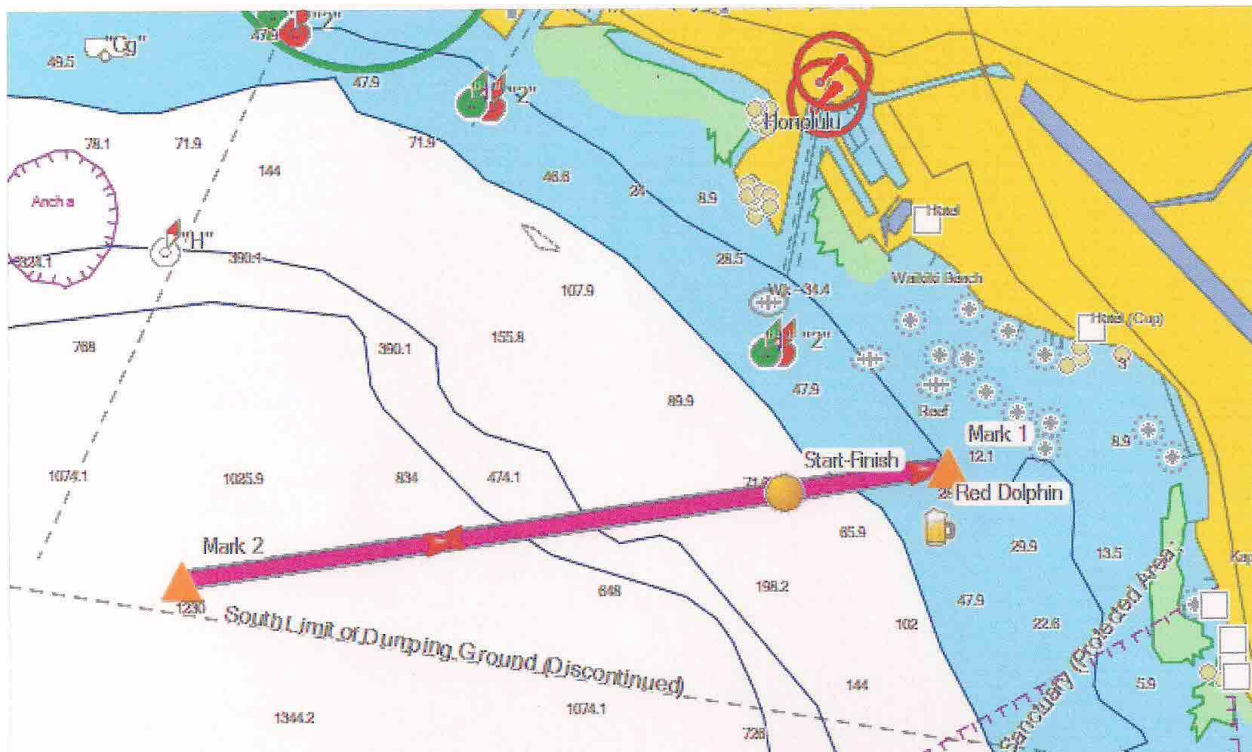
13 SCORING

Yachts will be scored in class.

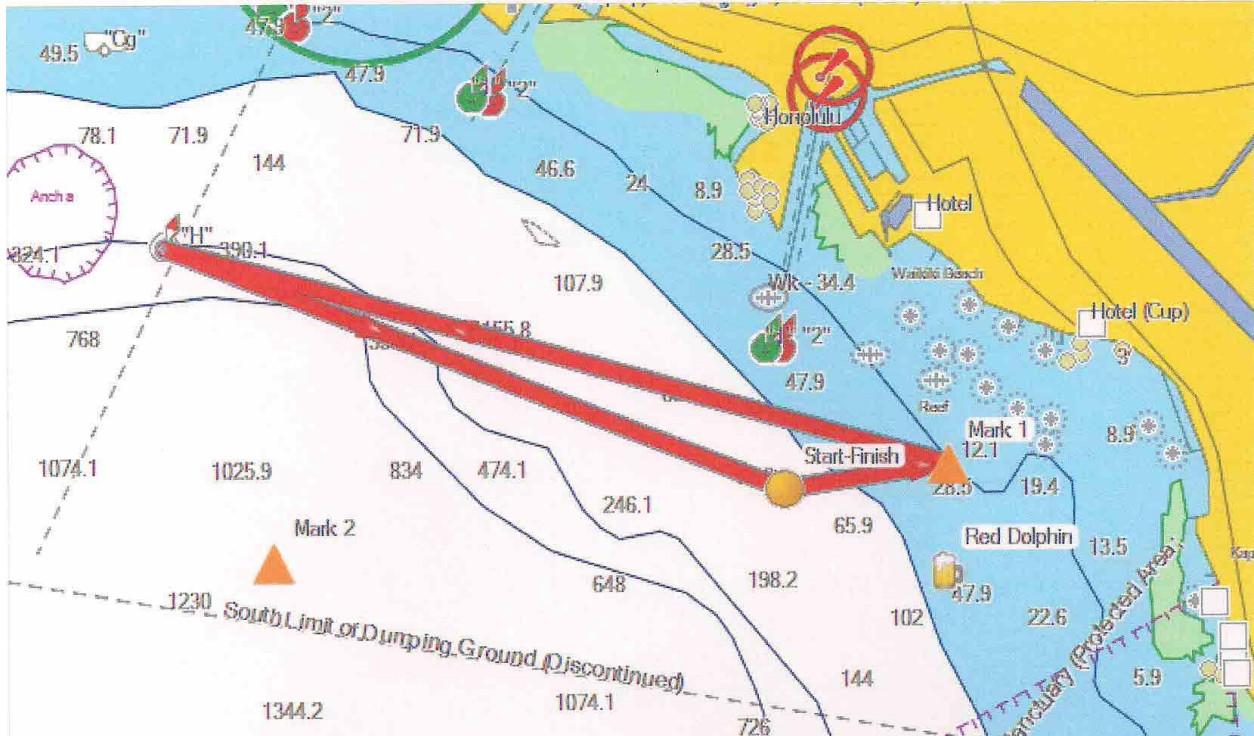
14 PRIZES

Awards will be at the Red Dolphin after the event.

Course 1



Cruiser Course



Multihull Course

