

**Club Náutico de San Juan**  
**12th International Regatta Feb. 1, 2 & 3, 2013**

**SAILING INSTRUCTIONS**

**Optimist - Optimist Green - Laser - Sunfish - Club 420**

**1. Rules**

- 1.1 The Regatta will be governed by the Rules as defined in The Racing Rules of Sailing (RRS). To the extent permitted by Part 7 of the RRS, specific provisions of the rules may be modified, altered or made inoperative by the Notice of Race (NOR) or the Sailing Instructions (SI).
- 1.2 The rules of the International Optimist Dinghy Association, Laser Class Rules, Sunfish Class Rules, Club 420 Class Rules, except as modified, altered or made inoperative by the Notice of Race or the Sailing Instructions to the extent permitted by such class rules.

**2. ADVERTISING**

- 2.1 ISAF regulation 20.4 applies. Boats may be required to display advertising chosen and supplied by the Organizing Authority (OA) in all or any of the races, if applicable. This advertising shall be placed on the boat at the starboard side/bow.

**3. Entries**

- 3.1 Optimist Fleet division (age grouping):

White Fleet: Between 6 and 10 years old

Blue Fleet: 11 or 12 years old

Red Fleet: 13 years old or older and shall not have reached their 16<sup>th</sup> Birthday in the current calendar year.

Green Fleet: Skippers must be age 15 or under on December 31<sup>st</sup> of the current year.

- 3.2 Assignment of boats to a particular fleet rest entirely within the discretion of the Race Committee whose decision shall be final.
- 3.3 Laser (4.7, Radial & Standard), Sunfish & Club 420 are open to all sailors.

3.4 Optimist Green Fleet must have a green ribbon at the head (top) of the sail.

#### **4. Notices to Competitors**

4.1 Notice to competitors will be posted on the official board in front of the regatta office, located at Salon Marina.

#### **5. Signals Made Ashore**

5.1 Signals made ashore will be displayed using the flags poles located in front of the Regatta Office, located at the Sailing Program Area.

5.2 Code Flag "AP" when made ashore, means "races not started are postponed". The warning signal shall be made not less than 30 minutes after "AP" is lowered.

#### **6. Changes in the sailing instructions.**

6.1 Any changes in the sailing instructions will be posted on the Official Board before 0759 hours on the day it will take effect.

#### **7. Schedule of races**

Friday, Feb. 1	0800-1030 hours	Check-In
	1000 hours	Skippers Meeting
	1115 hours	Lunch
	1300 hours	1 <sup>st</sup> Warning
		Followed by Subsequent Races
Saturday, Feb. 2	1100 hours	1 <sup>st</sup> Warning
		Followed by Subsequent Races
	After Lunch	Races to follow
Sunday, Feb. 3	1100 hours	1 <sup>st</sup> Warning
		Followed by Subsequent Races
	1600 hours	Awards Ceremony

#### **8. Racing area**

8.1 There are 4 different racing areas. Refer to Attachment '1' for racing areas designation. Racing

areas will be designated by the race committee daily, weather permitting.

## **9. MARKS**

- 9.1 Marks will be yellow and/or orange inflatable buoys.
- 9.2 The starting and finishing marks will be a Race Committee boat, either a Race Committee Signals Vessel or a Race Committee Finish boat, with a staff displaying an orange flag and a yellow or orange inflatable buoy.
- 9.3 Mark 4 is shown as a gate, 4S and 4P. This gate may be replaced by single mark, Mark 4 to be left to port.

## **10. The Courses**

- 10.1 The diagram in Attachment '2' Illustration '1' & '2' shows the courses for the Areas A and B.
- 10.2 Except as described in 10.3 all marks are to be left to Port.
- 10.3 For the courses showing marks 4S and 4P are leeward marks in the form of a Gate. In the description of the course the leeward mark will be represented with the number 4. Boats shall pass through the Gate between 4S and 4P.
- 10.4 The diagram in Attachment '3' shows the course for area 4.
- 10.5 The course number designation for the course to be sailed by each class will be posted no later than four (4) minutes before each start for that class. It will be displayed from the Race Committee Signal Vessel on a Chalkboard or other suitable item or the Race Committee Signal Vessel will display the designated number pennant for the course.
- 10.6 For all courses, after starting, the starting line is an obstruction. The penalty for a breach of this SI will be 2 points but not worse than DSQ. This penalty may be applied without a hearing. This amends RRS A5.

## 11. The Start

- 11.1 The starting line will be between a staff displaying an orange flag on the starboard end starting mark and the port end starting mark.
- 11.2 Orange Flag (1 min.). To alert boats that a race or sequence of races will start soon, the orange flag(s) on the staff(s) designating the starting line will be displayed (with one sound signal) for at least One minute before a warning signal is displayed.
- 11.3 The orange flag(s) on the staff(s) designating the starting line will be removed (with no sound signal) when the race management team determines that it will not promptly (usually within 5 minutes of the prior start) make the warning signal for the next race in a sequence of races.
- 11.4 Optimist White, Blue and Red will be starting together. There will not be a specific order for the fleets to start. A series of short sound signals will be made before the warning signal for the first race of the day, to gain the attention of the competitors. (Amends RRS 26).
- 11.5 Class Flags:
- |                                      |                     |
|--------------------------------------|---------------------|
| <b>Optimist Green Fleet</b>          | Green flag          |
| <b>Optimist Advance Fleet</b>        | Optimist Class Flag |
| <b>Laser</b> (4.7, Radial, Standard) | Laser Class Flag    |
| <b>Sunfish</b>                       | Sunfish Class Flag  |
| <b>Club 420</b>                      | Club 420 Class Flag |
- 11.6 Boats whose preparatory signal has not been made shall remain well clear and shall not interfere with all boats whose preparatory signal has been made.
- 11.7 A boat starting later than 4 minutes after her starting signal will be scored Did Not Start (DNS) without a hearing. This changes rules A4.1 and A.5.

## 12. Finish

- 12.1 The finishing line will be between a staff displaying an orange flag on the finishing mark at the starboard end and the port finishing mark.

- 12.2 **Finish Line Obstruction:** The finish line shall rank as an obstruction when a Blue flag or shape is displayed on the race committee Signal boat at the finish line. Boats may not pass through this line unless finishing. The penalty for a breach of this SI will be 2 points but not worse than DSQ. This penalty may be applied without a hearing. This amends RRS A5.
- 12.3 Finished boats shall remain well clear and shall not interfere of all boats that are still racing.

### **13. Time Limit**

- 13.1 The time limit for each race will be (60) minutes. Boats failing to finish (10) minutes after the first boat in their fleet or after the time limit, whichever is first, will be scored DNF. This changes RRS 35.

### **14. Penalties**

- 14.1 As provided in rule 67, the Protest Committee may, without a hearing, penalize a boat that has broken rule 42.
- 14.2 The Race Committee, Race Committee Auxiliary and Jury will be taking notes on any misconduct to the RRS, including touching the marks, sportsmanship, fair racing and others.

### **15. Protest**

- 15.1 Boats shall conspicuously display a red flag according to the second sentence of RRS 61.1(a). (Amends RRS 61.1(a)(2)). A boat protesting is required to display a flag shall do so until she is no longer racing and shall inform the Finish Line Committee Boat, immediately after finishing. (Amends RRS 61.1(a), third sentence).
- 15.2 All protest shall be filed at the registration desk no later than (30) minutes after the Race Committee Signal Vessel docking time. The docking time (beginning of protest time) will be posted on the official notice board.

- 15.3 Protest will be heard in the approximate order of receipt. The time and place of protest hearings will be posted on the Official Board within (30) minutes after the end of protest time.
- 15.4 On the last day of the regatta a request for reopening a hearing shall be delivered.
  - a) Within the protest time limit if the party requesting reopening was informed of the decision on the previous day.
  - b) No later than (30) minutes after the party requesting reopening was informed of the decision on that day. This changes RRS 66.
- 15.5 On the last day of the regatta a request for redress from a Protest Committee decision shall be delivered no later than 30 minutes after the decision was posted. This changes rule 62.2.

## **16. Safety**

- 16.1 Except for the IC24, adequate flotation device (life jackets) shall be worn and properly secured at all times while the competitor is in the boat.
- 16.2 Except for the IC24, all competitors shall carry a whistle at all times attached to their life jacket.
- 16.3 Each optimist must have at least one bailer properly tied to the hull.
- 16.4 Each optimist shall be equipped with a buoyant painter appropriate for towing, at least (12) feet in length.
- 16.5 Prior to the 1<sup>st</sup> Race of each day and after the last race of the day each competitor shall check in at the regatta office.
- 16.6 Prior to the 1<sup>st</sup> warning signal of the day each yacht shall sail close to the stern of the Race Committee Signal Vessel, and shall hail her/his name and sail number.
- 16.7 When a competitor leaves the racing area before the end of each racing day, he/she shall notify the race committee or any official boat before retiring.

- 16.8 Breaches of sailing instructions 16.1, 16.2, 16.3, 16.4, 16.5, 16.6 and 16.7 will not be grounds for a protest by a boat. Competitors breaking any of these rules may be protested by the race committee, and may result in disqualification of a boat from the day's racing. The protest time limit will not apply for these protests. This changes rule 60.1(a) and 61.3
- 16.9 Competitors in need of assistance should blow the whistle and/or attract attention by waving hands over their heads.
- 16.10 Boats sailing or towed to the racing area shall leave buoys (#13 green) and (#14 red) to starboard.
- 16.11 Boats sailing or towed back to CNSJ shall leave buoys (#13 green) and (#14 red) to port.

## **17. Support Boats**

- 17.1 Coaches, parents, and other support personnel shall not communicate, in any fashion, with competitors while they are racing except in case of emergency. Support boats shall keep well clear (a minimum of 200 ft.) of any boat racing.

## **18. Scoring**

- 18.1 For every six races completed, there will be one throw out.
- 18.2 At least three (3) races must be completed to constitute a series.

## **19. Disclaimer of Liability**

- 19.1 Competitors agree to be bound by the International Sailing Federation Racing Rules of Sailing (RRS) 2013/2016, by the Sailing Instructions and the Notice of Race. Competitors agree to take any and all responsibility for the nautical qualities of their vessels, the rigging, the crew's ability and the safety equipment. Competitors also agree to take any and all responsibility for damages caused to third persons or their belongings, to themselves or to their belongings, ashore and at sea as a consequence of

their participation in the regatta, relieving of any responsibility the Club Nautico de San Juan and all persons involved in the organization under whatever qualification. Competitors are to be acquainted with ISAF RRS Part 1 Fundamental Rule 4: "The responsibility for a boat's decision to participate in a race or to continue racing is hers alone". In any case, competitors agree that the Club Nautico de San Juan, the sponsors and their agents, have no responsibility for loss of life or injury to members or others or for the loss of, or damage to any vessel or property. As part of the registration process, each individual participating crewmember will be required to sign a declaration accepting this disclaimer of liability.

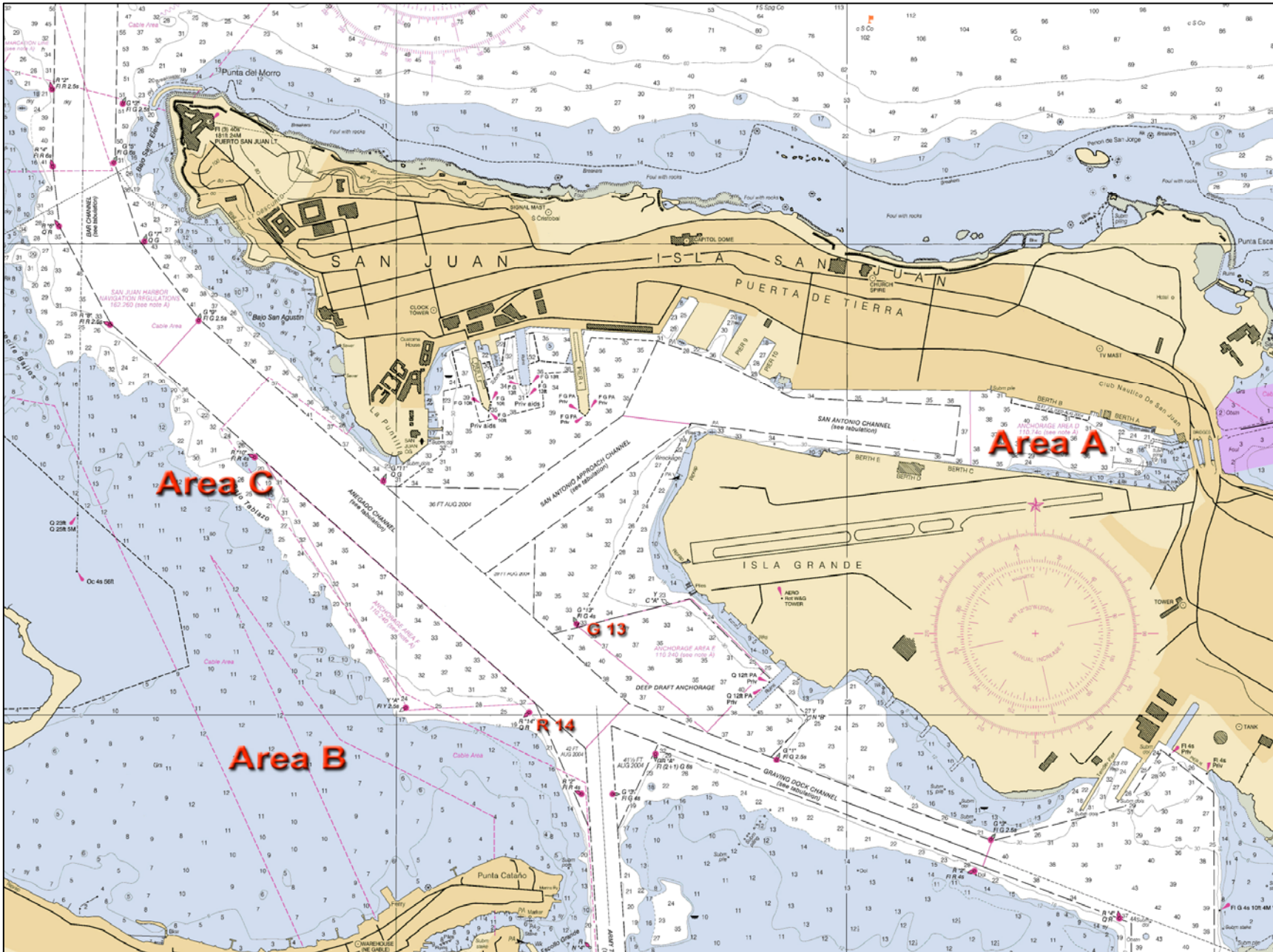
19.2 All competitors and their parents/guardians, before end of registration, must sign a waiver.

## **20. Prizes**

20.1 Prizes will be awarded to each competitor placing first, second, and third place. Other awards may be given.



# Attachment 1: Racing Areas



## Attachment 2: Courses ILLUSTRATION '1' for Racing Area 1, 2 & 3.

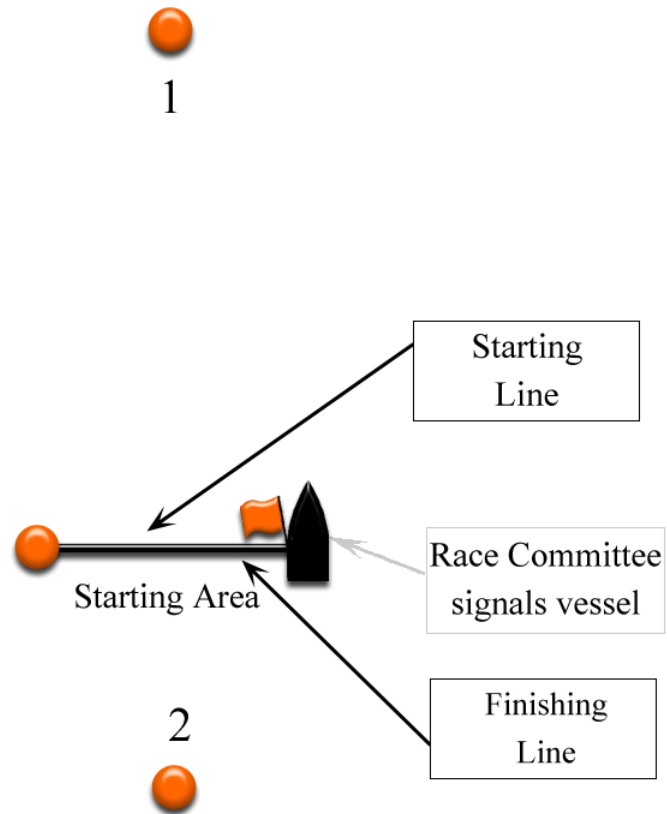
### Course 1

Course configuration: **Start – 1 – 2 – Finish**  
Marks shall be left to port.  
Angles are approximate.



### Course 2

Course configuration: **Start – 1 – 2 – 1 – 2 – Finish**  
Marks shall be left to port.  
Angles are approximate.



Waiting  
Area

## Attachment 2: Courses ILLUSTRATION '2' for Racing Area 3.

### Course 3

Course configuration: **Start-m1-m2-m3-Finish**

Marks shall be left to port.

Angles are approximate.

### Course 4

Course configuration: **Start-m1-m2-m3-m2-m3-Finish**

Marks shall be left to port.

Angles are approximate.

### Course 5

Course configuration: **Start-m1-4-m1-m2-m3-Finish**

Marks shall be left to port.

Angles are approximate.

### Course 6

Course configuration: **Start-m1-4-m1-m2-m3-m2-m3-Finish**

Marks shall be left to port.

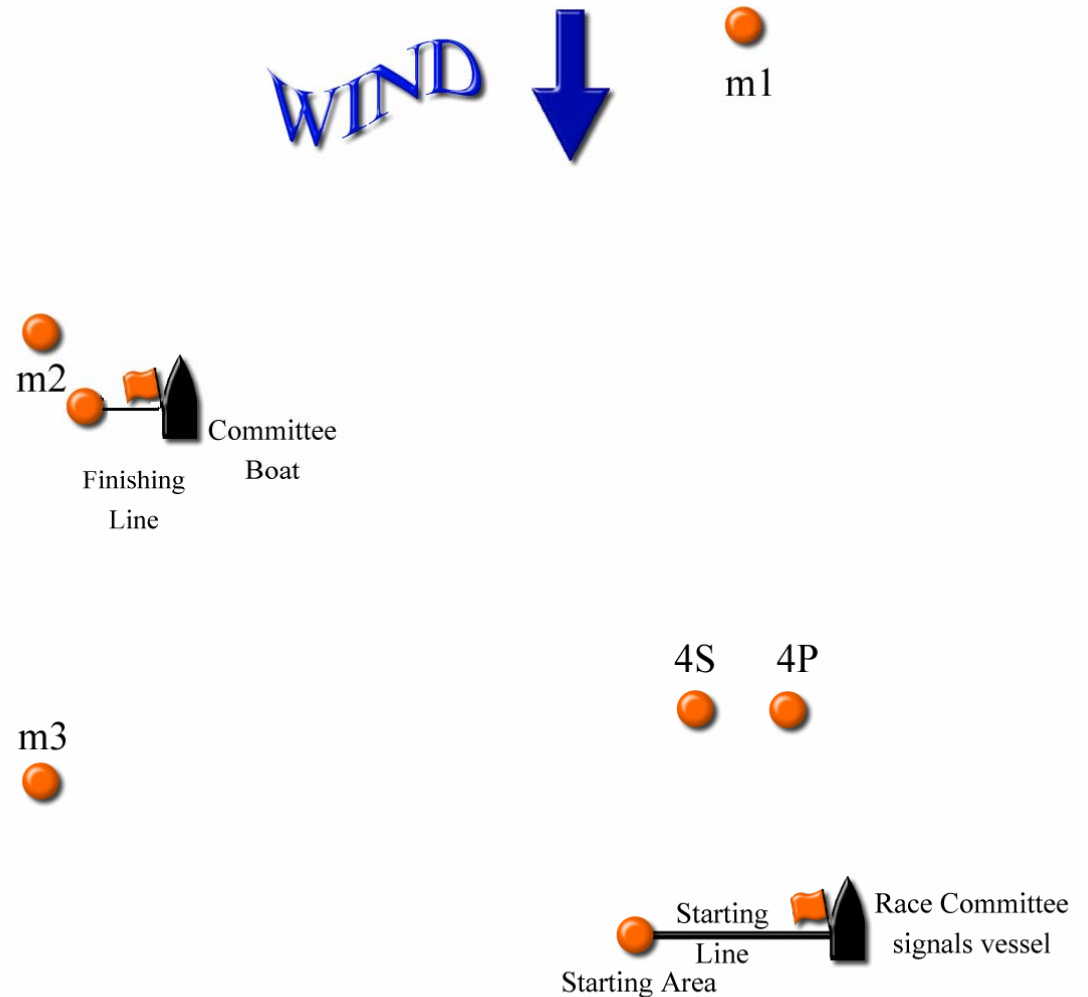
Angles are approximate.

### Course 7

Course configuration: **Start-m1-4-m1-4-m1-m2-m3-Finish**

Marks shall be left to port.

Angles are approximate.



**Club Náutico de San Juan**  
**12th International Regatta Feb. 1, 2 & 3, 2013**

**SAILING INSTRUCTIONS**

**IC24 - J24 - CSA**

**1. Rules**

- 1.1 The Regatta will be governed by the Rules as defined in The Racing Rules of Sailing (RRS). To the extent permitted by Part 7 of the RRS, specific provisions of the rules may be modified, altered or made inoperative by the Notice of Race (NOR) or the Sailing Instructions (SI).
- 1.2 The rules of the IC24 Class Rules, J24 Class Rules, CSA, the notice of Race, except as modified, altered or made inoperative by the Notice of Race or the Sailing Instructions to the extent permitted by such class rules.

**2. ADVERTISING**

- 2.1 ISAF regulation 20.4 applies. Boats may be required to display advertising chosen and supplied by the Organizing Authority (OA) in all or any of the races, if applicable. This advertising shall be placed on the boat at the starboard side/bow.

**3. Entries**

- 3.1 Assignment of boats to a particular fleet rest entirely within the discretion of the Race Committee whose decision shall be final.

**4. Notices to Competitors**

- 4.1 Notice to competitors will be posted on the official board in front of the regatta office, located at Salon Marina.

**5. Signals Made Ashore**

- 5.1 Signals made ashore will be displayed using the flags poles located in front of the Regatta Office, located at the Sailing Program Area.

5.2 Code Flag "AP" when made ashore, means "races not started are postponed". The warning signal shall be made not less than 30 minutes after "AP" is lowered.

## **6.Changes in the sailing instructions.**

6.1 Any changes in the sailing instructions will be posted on the Official Board before 0759 hours on the day it will take effect.

## **7.Schedule of races**

Friday, Feb. 1	0800-1030 hours	Check-In
	1000 hours	Skippers Meeting
	1115 hours	Lunch
	1300 hours	1 <sup>st</sup> Warning
		Followed by Subsequent Races
Saturday, Feb. 2	1100 hours	1 <sup>st</sup> Warning
		Followed by Subsequent Races
	After Lunch	Races to follow
Sunday, Feb. 3	1100 hours	1 <sup>st</sup> Warning
		Followed by Subsequent Races
	1600 hours	Awards Ceremony

## **8.Racing area**

8.1 There are 3 different racing areas. Refer to Attachment '1' for racing areas designation. Racing areas will be designated by the race committee daily, weather permitting.

## **9.MARKS**

9.1 Marks will be yellow and/or orange inflatable buoys.

9.2 The starting and finishing marks will be a Race Committee boat, either a Race Committee Signals Vessel or a Race Committee Finish boat, with a staff displaying an orange flag and a yellow or orange inflatable buoy.

## 10. The Courses

- 10.1 The diagram in Attachment '3' shows the course for Area C.
- 10.2 For the Course in Area C showing mark G are leeward marks in the form of a gate (marks S and P). Boats shall pass through the gate between S and P.
- 10.3 The course number designation for the course to be sailed by each class will be posted no later than four (4) minutes before each start for that class. It will be displayed from the Race Committee Signal Vessel on a Chalkboard or other suitable item or the Race Committee Signal Vessel will display the designated number pennant for the course.

## 11. The Start

- 11.1 The starting line will be between a staff displaying an orange flag on the starboard end starting mark and:
  - a) For CSA (Spinnaker, Jib & Main) the port end starting mark, Orange Tetrahedron.
  - b) For IC24/J24 the port end starting mark, Yellow round Bouy.
- 11.2 Orange Flag (1 min.). To alert boats that a race or sequence of races will start soon, the orange flag(s) on the staff(s) designating the starting line will be displayed (with one sound signal) for at least One minute before a warning signal is displayed.
- 11.3 The orange flag(s) on the staff(s) designating the starting line will be removed (with no sound signal) when the race management team determines that it will not promptly (usually within 5 minutes of the prior start) make the warning signal for the next race in a sequence of races.
- 11.4 Class Flags:

<b>IC24</b>	IC24 Class Flag
<b>J-24</b>	J24 Class Flag
<b>CSA Jib &amp; Main</b>	Yellow
<b>CSA Spinnaker</b>	Teal

- 11.5 Boats whose preparatory signal has not been made shall remain well clear and shall not interfere with all boats whose preparatory signal has been made.
- 11.6 A boat starting later than 4 minutes after her starting signal will be scored Did Not Start (DNS) without a hearing. This changes rules A4.1 and A.5.

## **12. Finish**

- 12.1 The finishing line will be between a staff displaying an orange flag on the finishing mark at the starboard end and the port finishing mark.
- 12.2 **Finish Line Obstruction:** The finish line shall rank as an obstruction when a Blue flag or shape is displayed on the race committee Signal boat at the finish line. Boats may not pass through this line unless finishing. The penalty for a breach of this SI will be 2 points but not worse than DSQ. This penalty may be applied without a hearing. This amends RRS A5.
- 12.3 Finished boats shall remain well clear and shall not interfere of all boats that are still racing.

## **13. Penalties**

- 13.1 As provided in rule 67, the Protest Committee may, without a hearing, penalize a boat that has broken rule 42.
- 13.2 The Race Committee, Race Committee Auxiliary and Jury will be taking notes on any misconduct to the RRS, including touching the marks, sportsmanship, fair racing and others.

## **14. Protest**

- 14.1 Boats shall conspicuously display a red flag according to the second sentence of RRS 61.1(a). (Amends RRS 61.1(a)(2)). A boat protesting is required to display a flag shall do so until she is no longer racing and shall inform the Finish Line Committee Boat, immediately after finishing. (Amends RRS 61.1(a), third sentence).

- 14.2 All protest shall be filed at the registration desk no later than (30) minutes after the Race Committee Signal Vessel docking time. The docking time (beginning of protest time) will be posted on the official notice board.
- 14.3 Protest will be heard in the approximate order of receipt. The time and place of protest hearings will be posted on the Official Board within (30) minutes after the end of protest time.
- 14.4 On the last day of the regatta a request for reopening a hearing shall be delivered.
- a) Within the protest time limit if the party requesting reopening was informed of the decision on the previous day.
  - b) No later than (30) minutes after the party requesting reopening was informed of the decision on that day. This changes RRS 66.
- 14.5 On the last day of the regatta a request for redress from a Protest Committee decision shall be delivered no later than 30 minutes after the decision was posted. This changes rule 62.2.

## 15. Safety

- 15.1 Prior to the 1<sup>st</sup> warning signal of the day each yacht shall sail close to the stern of the Race Committee Signal Vessel, and shall hail her/his name and sail number.
- 15.2 The preamble of Part 2 WHEN BOATS MEET states:
- When a boat sailing under these rules meets a vessel that is not, she shall comply with the **International Regulations for Preventing Collisions at Sea (IRPCAS)** or government right-of-way rules. If the sailing instructions so state, the rules of Part 2 are replaced by the right-of-way rules of the IRPCAS or by government right-of-way rules.*
- a) Boats that interfere with any commercial vessel will be protested by the Race Committee or the Protest Committee.



- b) In the event that the Coast Guard, Ports Captain or Pilot in duty, make any complain regarding a vessel misconduct regarding government right-of-way rules with a commercial vessel, the Race Committee shall protest such vessel.
- 15.3 When a competitor leaves the racing area before the end of each racing day, he/she shall notify the race committee or via VHF channel 13.

## **16. Communication**

- 16.1 Communication in Area C will be VHF Channel 13.

## **17. Scoring**

- 17.1 For every six races completed, there will be one throw out.
- 17.2 At least three (3) races must be completed to constitute a series.

## **18. Disclaimer of Liability**

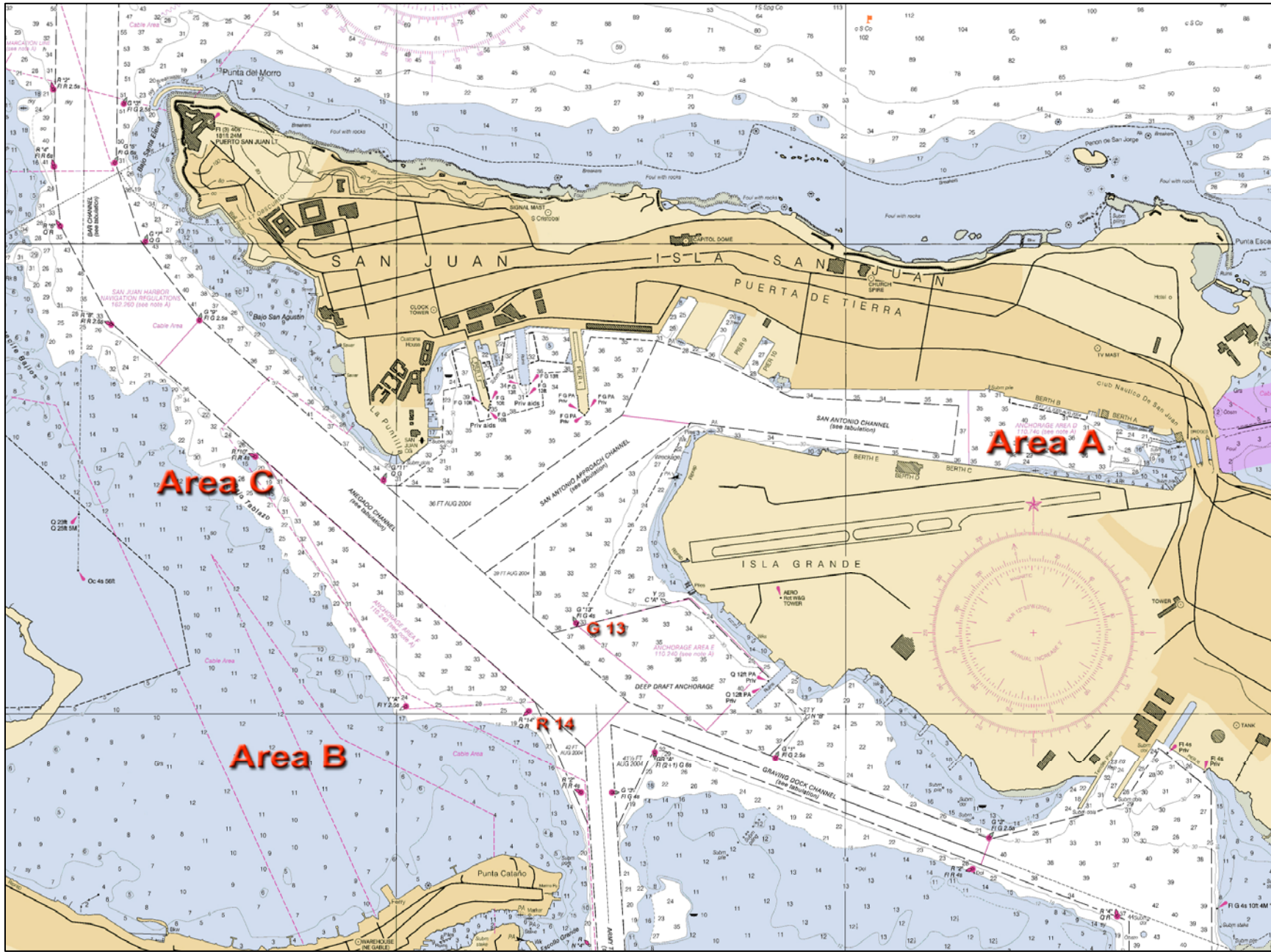
- 18.1 Competitors agree to be bound by the International Sailing Federation Racing Rules of Sailing (RRS), by the Sailing Instructions and the Notice of Race. Competitors agree to take any and all responsibility for the nautical qualities of their vessels, the rigging, the crew's ability and the safety equipment. Competitors also agree to take any and all responsibility for damages caused to third persons or their belongings, to themselves or to their belongings, ashore and at sea as a consequence of their participation in the regatta, relieving of any responsibility the Club Nautico de San Juan and all persons involved in the organization under whatever qualification. Competitors are to be acquainted with ISAF' RRS Part 1 Fundamental Rule 4: "The responsibility for a boat's decision to participate in a race or to continue racing is hers alone". In any case, competitors agree that the Club Nautico de San Juan, the sponsors and their agents, have no responsibility for loss of life or injury to members or others or for the loss of, or damage to any vessel

or property. As part of the registration process, each individual participating crewmember will be required to sign a declaration accepting this disclaimer of liability.

## **19. Prizes**

19.1 Prizes will be awarded to each competitor placing first, second, and third place. Other awards may be given.

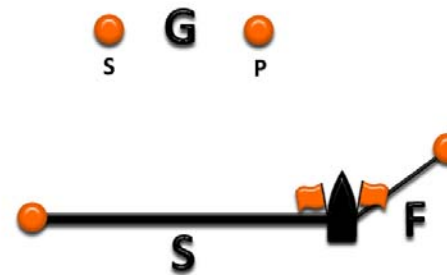
# Attachment 1: Racing Areas



## Attachment 2: Courses ILLUSTRATION '1'

  
**M1**

IC 24 and J24	
Course Num.	Course
1	S-M1-F
2	S-M1-G-M1-F
3	S-M1-G-M1-G-M1-F
4	S-G11-WBY-G3-G13-M1-F



# Attachment 2: Courses ILLUSTRATION '2'

## CSA

Course 1 (Hamburger Plain) (Aprox. 7.2 NM)

Course configuration:

Start – G11 – WBY – G3 – G13 – M1 – Finish

Course 2 (Double Hamburger) (Aprox. 10.7 NM)

Course configuration:

Start – G11 – WBY – R2 – WBY – G3 – G13 – M1 – Finish

Course 3 (Cola de Caballo) (Aprox. 17.3 NM)

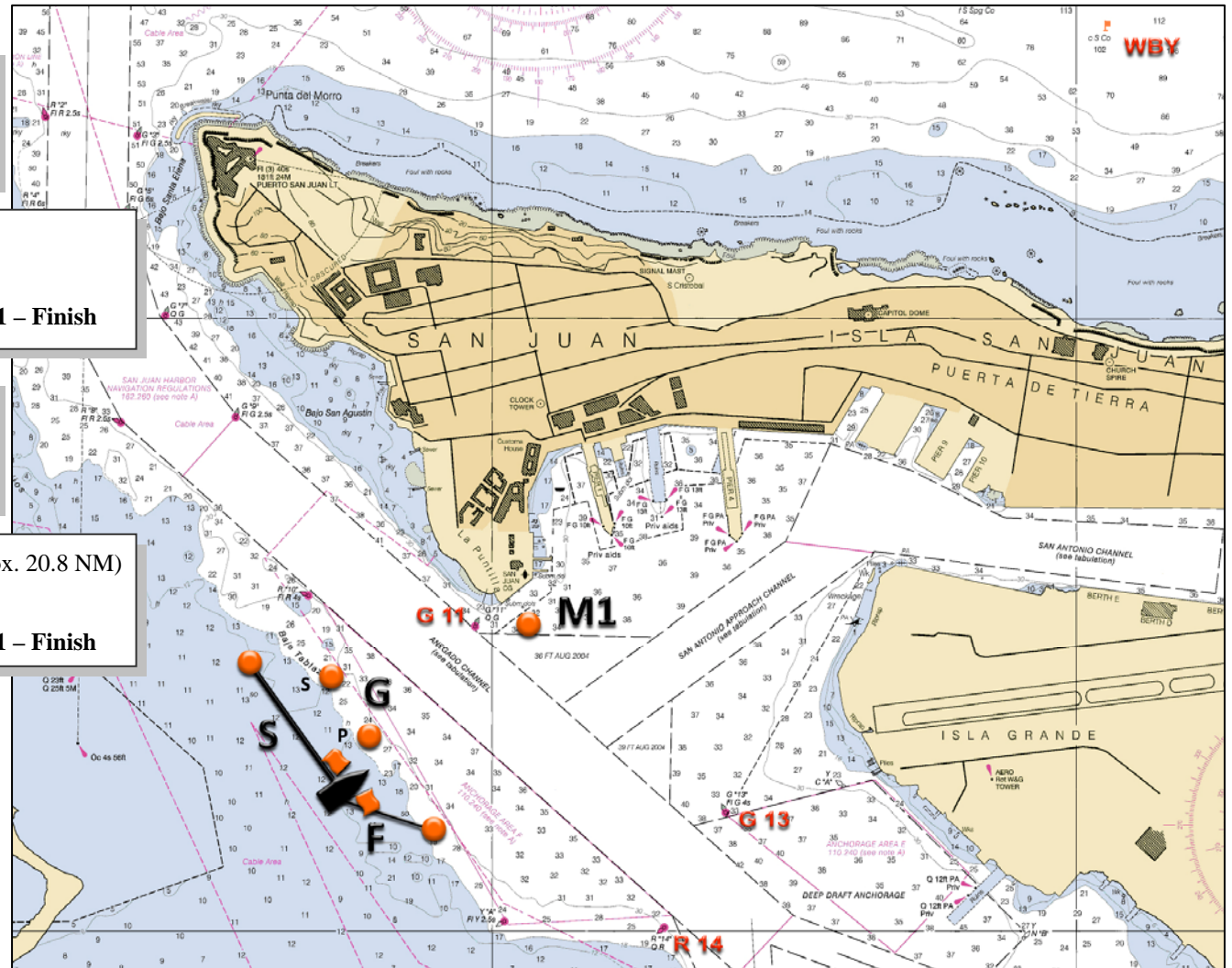
Course configuration:

Start – G11 – BCR – G3 – G13 – M1 – Finish

Course 4 (Cola de Caballo con Hamburger) (Aprox. 20.8 NM)

Course configuration:

Start – G11 – BCR – R2 – WBY – G3 – G13 – M1 – Finish



All marks shall be left to port.

WBY = Weather Buoy Yellow Lat: 18° 28.47' N Lon 066° 05.95' W

BCR = Cola de Caballo VCF (Visual Sailing Reference) Temporary Buoy Aprox.: Lat: 18 28.127' N Lon: 066 00.652'