



**2012 Friday Night Races
Sailing Instructions
South Beach Yacht Club**



1. Rules

- 1.1 The regatta will be governed by the rules as defined by the (RRS) Racing Rules of Sailing, 2009-2012.
- 1.2 Racing Rule 40 will be changed as follows: All competitors are required to wear life-jackets or other adequate personal buoyancy while racing. The “Y” flag will not be displayed.

2. Entry

- 2.1 Eligible boats shall complete registration online (www.southbeachyachtclub.org) in accordance with the Notice of Race.
- 2.2 All boats are invited to participate. Each boat shall have a 2012 Northern California PHRF certificate.
- 2.3 Boats without a 2012 Northern California PHRF handicap certificate will be assigned a PHRF rating by the Race Committee.

3. Signals Made from Ashore

- 3.1. Signals made from ashore will be displayed from the Mast on the South Beach Yacht Club Clubhouse
- 3.2. When the AP flag is displayed from the mast, “1” minute is replaced by “not less than 30 minutes”.

4. Communications with Competitors

- 3.1 Official Notices will be posted on Friday Night Series electronic bulletin board that can be found at: http://www.regattanetwork.com/event/5068#_newsroom
- 3.2 Changes to the Sailing Instructions will be posted by 1700 on the day they are to take effect
- 3.3 Competitors should monitor VHF 78 for the on the water communications with the Race Committee
- 3.4 Communication from the Race Committee shall not be considered outside assistance. This changes RR 41.

4 Number and Schedule of Races

4.1 Dates of Racing

4.1.1 Practice: April 20

4.1.2 Series: April 27, May 4, May 18, June 1, June 15, June 22, July 6, July 20, July 27, August 3, August 17, and August 24

4.2 The first Warning Signal for all races is 1830 hours

5 Racing Area

The racing area will be in the South Bay waters of San Francisco Bay.

6 Courses and Marks

6.1 Courses, mark descriptions and a chartlet are described in Attachment One, "Official Description of Marks and Courses".

6.2 No later than the Warning Signal, a code flag will be displayed from the Race Committee Boat designating the course to be sailed

7 Starting Order

7.1 The intended starting order is as follows:

Starting Order	Division	Division Flag
1830 Warning	Non-Spinnaker PHRF 136 and Above	D (Delta)
1835 Warning	Catalina 30 Fleet	E (Echo)
1840 Warning	Non-Spinnaker PHRF 135 and Below	F (Foxtrot)
1845 Warning	Spinnaker PHRF 101 and Above	G (Golf)
1850 Warning	J-105's	H (Hotel)
1855 Warning	Spinnaker PHRF 100 and Below	J (Juliet)

8 The Start

8.1 The starting line will be between a staff displaying an orange flag on the RC boat and YRA mark "SC1"

8.2 Each boat must start no later than 10 minutes after its starting signal. A boat that starts later than 10 minutes after her starting signal will be scored DNS. This changes RR 35.

9 Recalls

9.1 The Race Committee may hail the sail numbers(s) of the boat(s) identified on the course side of the starting line after the starting signal. The failure of a hail, the failure of a boat hearing the hail or the order of the hails shall not be grounds for redress. This changes RR 62.1(a).

9.2 General Recall: A fleet with a general recall will have the start moved to the position following the last regular starting sequence. This changes RR 29.2.

10 The Finish

- 10.1 The Finish Line will be the entrance to McCovey Cove, between the north-eastern corner of Pier 48 and the green channel marker FL G 2.5s “PA”
- 10.2 Boats retiring before finishing shall notify the Race Committee as soon as practical either by the assigned VHF channel or 415-630-0002.

11 Restricted Areas

- 11.1 Boats shall not pass thru the start line except for starting. Any boat passing thru the restricted zone will receive a 1pt scoring penalty for the race.

12 COMMERCIAL TRAFFIC AND SAFETY

- 12.1 Boats shall not impede the passage of commercial vessels and shall comply with the U.S. Inland Navigation Rules Act of 1980.

13 Time Limits

- 13.1 Boats finishing after 2130 hours will be scored as DNF. This changes RR 35.
- 13.2 A boat failing to finish within 45 minutes after the first boat in her division will be scored “Did Not Finish” by the Race Committee. This changes RR 35.
- 13.3 The Race Committee will be on station at the Finish Line until 2100. Boats finishing later than 2100 hours shall take their own finishing time and report it to the Race Committee no later than 2145.

14 Scoring

- 14.1 PHRF Time on distance corrections shall be used; corrected times will be calculated to the nearest second.
- 14.2 Eight completed races will constitute series.
- 14.3 When fewer than 7 races have been completed, a boat’s series scores will be a total of her race scores
- 14.4 When from 7 to 9 races have been completed, a boat’s series score will be the total of her race scores excluding her worst score.
- 14.5 When 10 races have been completed, a boat’s series score will be the total of her race scores excluding her two worst scores.
- 14.6 **If a boat causes damage to the Committee Boat, that boat will be scored “DNE” for that race. This changes RR A5.**

15 PROTESTS AND REQUESTS FOR REDRESS

- 15.2 Protests and requests for redress shall be written on Standard US Sailing Protest Forms available from the Race Committee. Protests and Requests for Redress for all divisions shall be delivered to a Race Committee representative no later than 2200 hours on the day of the race.
- 15.3 The protest will be heard the Thursday following the FNS race being protested at 1700 in the Library at South Beach Yacht Club. This shall serve as proper notification per RRS 63.2.
- 15.4 Except for RRS 69 and at the discretion of the Protest Committee Chair, hearings will take place as scheduled, with or without the presence of all parties.

16.1 Awards

17.1 Prizes will be awarded after each race for the first place winner in each division.

Prizes must be picked up by the end of the next race.

17.2 Trophies for first, second and third places for each division will be awarded at the end of the series.

Attachment One
Official Description of Courses and Marks
Round all Marks to Port except Gate 35/36; Pass between the Marks 35/36 from the
direction of the previous Mark

Course Number	Start	Mark	Mark	Mark	Mark	Mark	Mark	Mark	Distance (nm)
1	SC1	AS1	SC1	F					2.6
2	SC1	AS1	34	F					3.3
3	SC1	AS1	34	SC1	F				3.9
4	SC1	AS1	SC1	AS1	SC1	F			4.5
5	SC1	AS1	NAS2	F					5.0
6	SC1	AS1	34	SC1	AS1	SC1	F		5.7
7	SC1	AS1	37	F					5.7
8	SC1	AS1	34	NAS2	F				5.7
9	SC1	AS1	34	SC1	34	SC1	F		6.0
10	SC1	AS1	35/36	F					6.0
11	SC1	AS1	37	SC1	F				6.2
12	SC1	AS1	34	SC1	AS1	34	F		6.4
13	SC1	AS1	34	SC1	AS1	34	SC1	F	7.0
14	SC1	AS1	NAS2	AS1	SC1	F			6.7
15	SC1	AS1	NAS2	SC1	34	SC1	F		7.0
16	SC1	AS1	32	F					7.5
17	SC1	AS1	37	NAS2	F				7.5
18	SC1	AS1	NAS2	SC1	NAS2	F			7.5
19	SC1	AS1	34	32	F				7.7
20	SC1	AS1	32	NAS2	F				8.1
21	SC1	AS1	34	32	NAS2	F			8.1
22	SC1	AS1	37	32	F				8.3
23	SC1	AS1	NAS2	34	NAS2	F			8.3
24	SC1	AS1	37	32	NAS2	F			8.9
25	SC1	AS1	35/36	SC1	35/36	F			9.3
26	SC1	AS1	32	SC1	AS1	SC1	F		9.5
27	SC1	AS1	NAS2	SC1	32	F			10.3
28	SC1	NAS2	SC1	34	SC1	F			5.4
29	SC1	35/36	AS1	SC1	F				6.0

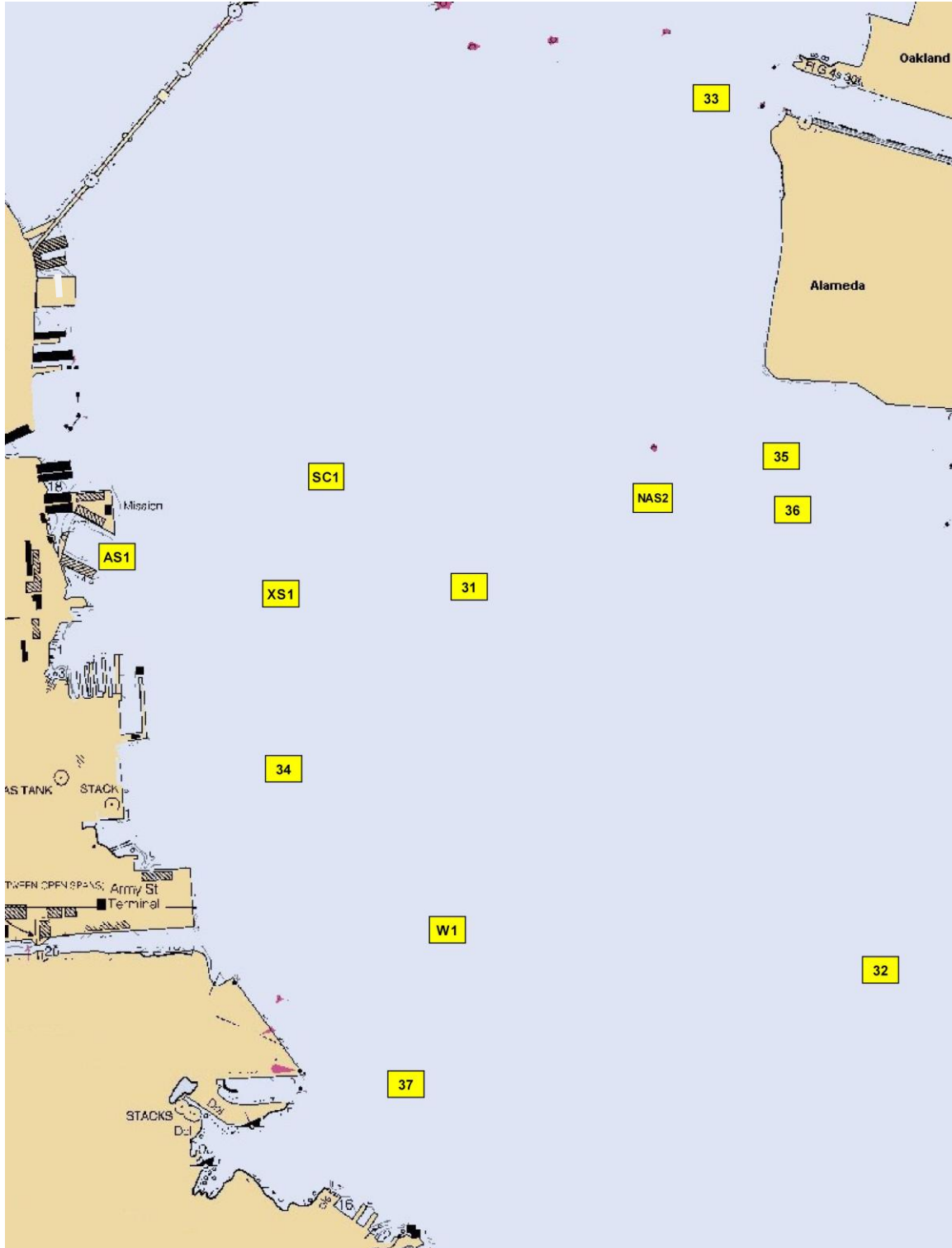
Marks –

Mark	Mark Description	Mark	Mark Description
AS1	Yellow sphere, approx 0.25 nm East of BVBC	F	Finish line between the eastern corner of Pier 48 and Green channel marker FL G 2.5s "PA"
SC1	Green & red buoy, "SC" FL G(2+1), approx 1.0 nm ENE of Mission Rock Terminal	NAS2	NAS Alameda Channel Mark "R2" FL R 4s
32	"A" FL Y 4s, approx 2.5nm east of Army St. Terminal	34	Red buoy "2" FL R 2.0s, approx 0.5 nm east of Potrero Point
35	Green Day marker "3" Fl G 2.5s, Alameda Entrance Channel	36	Red Day marker "4" Fl R 4s, Alameda NAS Entrance Channel
37	Green buoy "5" FL G 4s, approx 1.0 nm SSE of Army St. Terminal		

Mark descriptions are from 2012 YRA racing information

Chartlet of South Beach Yacht Club Friday Night Series Race Area

NOTE: Locations of YRA and Temporary Marks are approximate and provided for reference only.



THIS PAGE INTENTIONALLY LEFT BLANK