



**BIG THREE REGATTA**  
Saturday May 19<sup>th</sup> 2012  
Waikiki Yacht Club  
Honolulu, Hawaii

**SAILING INSTRUCTIONS**

**1 RULES**

The regatta will be governed by the rules as defined in *The Racing Rules of Sailing as updated January 2010*, the prescriptions of US SAILING, pertinent Class/Fleet Rules, by the Waikiki Yacht Club Standing Sailing Instructions, the Notice of Race and these Sailing Instructions.

**1.1**

Racing rule 52 will be changed as follows:  
The use of powered winches is authorized.

**2 NOTICES TO COMPETITORS**

Notices to competitors will be posted on the official notice board located in the WYC card room.

**3 CHANGES TO THE SAILING INSTRUCTIONS**

Any change to the sailing instructions will be posted before 0900 on the day it will take effect, except that any change to the schedule of races will be posted by 2000 on the day before it will take effect.

**4 SIGNALS MADE ASHORE**

Signals made ashore will be displayed from the WYC flagpole.

**5 SCHEDULE OF RACES**

The first warning will be at 1325 May 19, 2012.  
Subsequent starts will be in approximately five minute intervals.

## **6 CLASS FLAGS**

The class flags and start sequences are:

PH C	Light Green with C
PHA	Black with 1
PHB	Yellow with 1

## **7 RACING AREA**

The racing area will be between Diamond Head and Honolulu Harbor entrance. See attached maps for course location and configuration.

## **8 COURSES**

Course PH A: Start – Windward Mark to Port – Mark 2 to Port – Finish.

Course PH B: Start – Windward Mark to Port – Mark 1 to Port – Finish.

Cruiser Course: Start – Windward Mark to Starboard –DH to Port - HH to Starboard – Finish at G1

See attached maps for more details.

## **9 STARTING AND FINISHING LINE**

The starting and finishing line will be between two yellow inflatable tetrahedrons. The finish line for the cruising course will be between G1 and the staff of the Blue flag on the race committee boat.

## **10 MARKS**

The Marks will be orange tetrahedrons.

## **11 TIME LIMIT**

The time limit for each race will be one and a half hour for the first boat to finish.

## **12 PROTESTS**

Protests shall be delivered to WYC within 45 min. after the race committee boat docks. The protest time limit and a list of protests received will be posted on the notice board. Hearings will be held as soon as possible after racing at WYC.

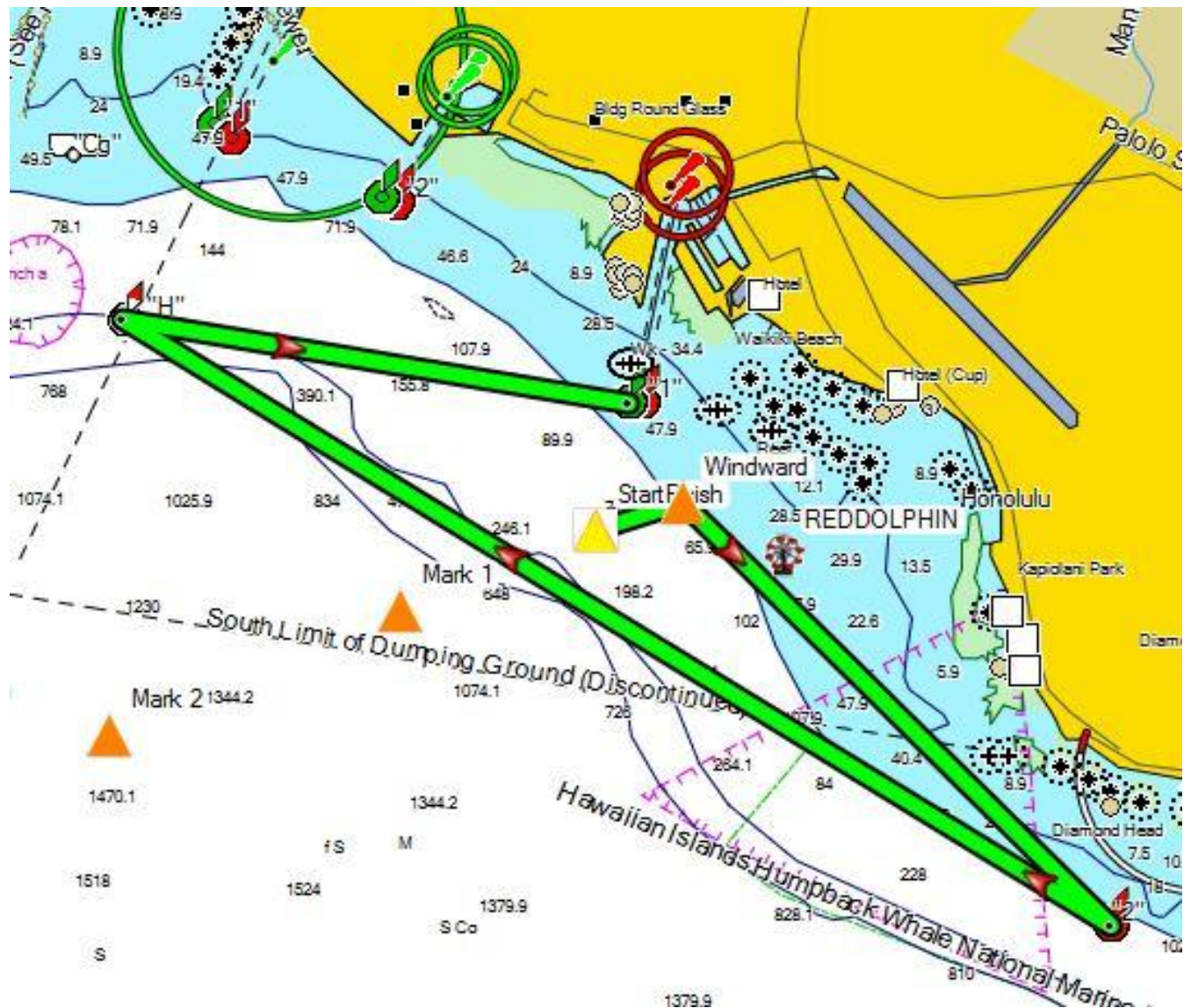
## **13 SCORING**

Yachts will be scored in class.

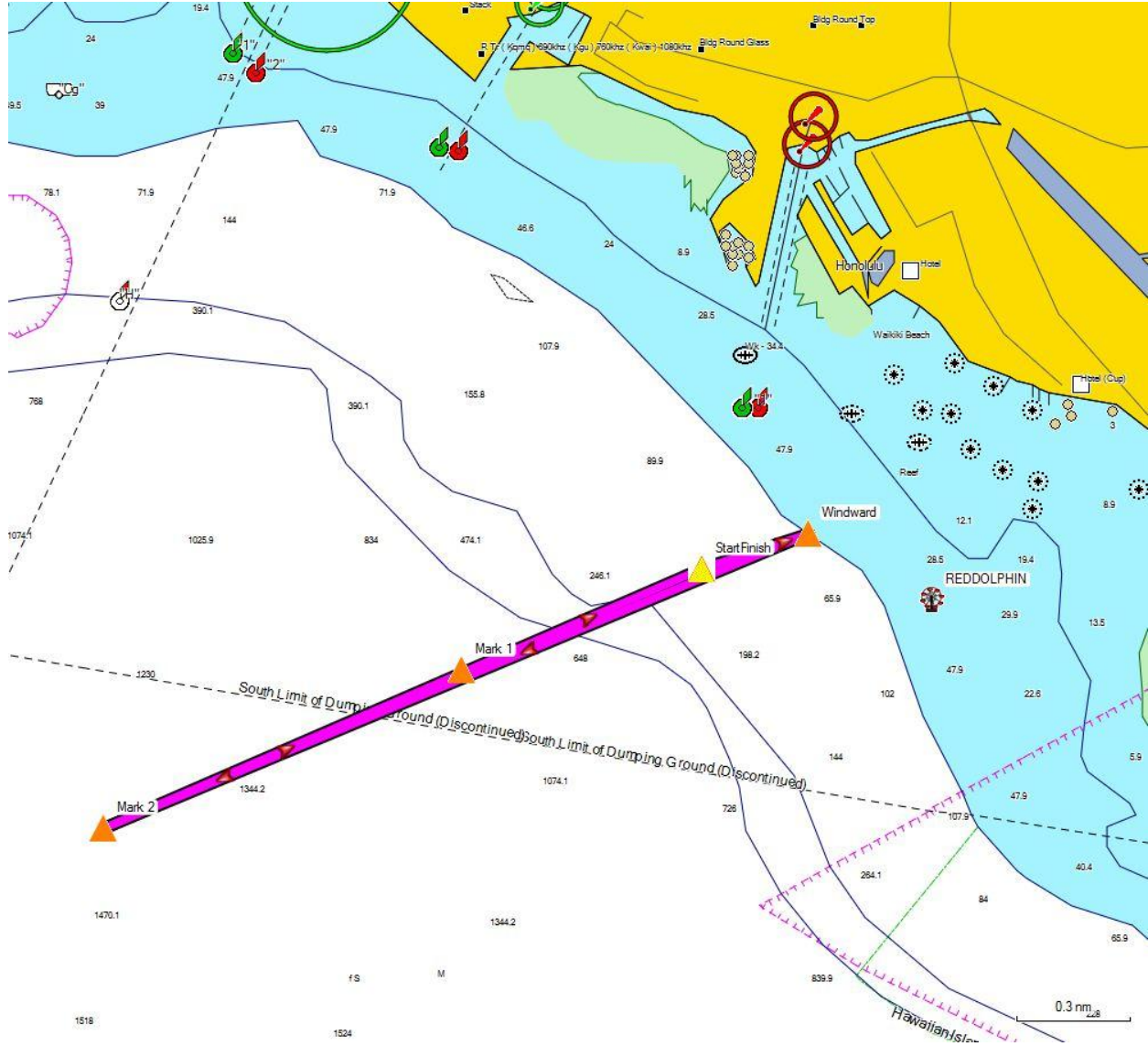
## 14 PRIZES

Awards will be at WYC after the event.

### Cruising Course



# PH A Course



# PH B Course

