



Celebrating 30 Years

October 1 - 5, 2013



Presented by



SAILING INSTRUCTIONS



International J/22 Class Association
2013 World Championship

Organizing Authority: Sail Newport
Newport, RI



Rhode Island State
Yachting Committee

SAILING INSTRUCTIONS

1. RULES

- 1.1. The regatta will be governed by the *rules* as defined in The Racing Rules of Sailing (RRS).
- 1.2. The US SAILING prescriptions to rules 67, 76.1, and added rules 61.4 and 82 shall apply and appear in full in Appendix B.
- 1.3. The class rules for the purposes of the definition of *rule* will be the rules of the International J/22 Class Association (IJ22CA).
- 1.4. Bow numbers will be assigned to each boat and will be used as identification for the boat during the regatta. Bow numbers shall be applied in accordance with the instructions supplied with the numbers and shall remain affixed until after a boat hauls out at the end of the regatta.
- 1.5. In the event of a conflict between languages, this English text shall take precedence.

2. NOTICES TO COMPETITORS

- 2.1. Notices to competitors will be posted on the Official Notice Board located in the event tent adjacent to the Sail Newport Waterfront Center.
- 2.2. While on the water, the Race Committee intends to broadcast pertinent race information on VHF Channel 72. Failure of such information to be given or received, or the order in which it is broadcast, shall not be grounds for redress by a boat. This changes rule 62.1(a).

3. CHANGES TO SAILING INSTRUCTIONS

- 3.1. Any change to the Sailing Instructions will be posted before 0900 on the day it will take effect, except that any change to the schedule of races will be posted by 2000 on the day before it will take effect.

WATERLINE
SYSTEMS LLC ESTABLISHED 1988



Welcome to Newport and the 30th Anniversary J/22 World Championship.

30 years ago, the J/22s started production at the plant in Warren, RI. Dunes was in this very parking lot, planting the seeds that would become Waterline Systems.

This spring, we acquired that shop and returned the J/22 molds to their birthplace in Warren. This fall, the worlds return to Newport, home of J/Boats. The symmetry is perfect.

Waterline Systems and USWatercraft welcome you to our home pond. As always, we're here to provide you with the best boats, service, support and parts to ensure that you get the most from your J/22 sailing..

Need help at the regatta? Come to the van, or text Will 716-531-6088 www.waterlinesystems.com

USWATERCRAFT

4. SIGNALS MADE ASHORE

- 4.1. Signals made ashore will be displayed from the flagpole at the Sail Newport Waterfront Center.
- 4.2. When flag AP is displayed ashore, '1 minute' is replaced with 'not less than '60 minutes' in the Race Signal AP. This changes Race Signal AP.

5. SCHEDULE

Saturday, September 28	
Registration and Measurement	1000 - 1800
Sunday, September 29	
Registration and Measurement	1000 - 1800
Monday, September 30	
Registration and Measurement	1000 - 1800
Practice Racing	1300
Skippers' Meeting and Opening Reception	1800
Tuesday, October 1 - RACE DAY ONE	
Competitor Briefing	0830
Initial Warning Signal	1100
Wednesday, October 2 - RACE DAY TWO	
Competitor Briefing	0830
Initial Warning Signal	1100
Thursday, October 3 - RACE DAY THREE	
Competitor Briefing	0830
Initial Warning Signal	1100
Friday, October 4 - RACE DAY FOUR	
Competitor Briefing	0830
Initial Warning Signal	1100
Saturday, October 5 - RACE DAY FIVE	
Competitor Briefing	0830
Initial Warning Signal	1100
No initial Warning Signal after this time	1430

- 5.1. Up to four (4) races a day may be sailed.
- 5.2. Thirteen (13) races are scheduled.
- 5.3. The Organizing Authority (OA) and/or the RC reserve the right to modify the schedule of races due to weather conditions or other causes.

6. CLASS FLAGS

- 6.1. The J/22 Class Flag (Blue insignia on a white background) shall be used in accordance with rule 26.

7. RACING AREAS

7.1. Appendix A shows the location of the racing areas. The rendezvous location will be announced daily at the Competitor Briefing and will also be announced via the VHF channel.

8. CHECK-IN, CHECK-OUT

8.1. Before the warning signal of the first race a boat sails each day, each boat shall sail on starboard tack past the stern of the Race Committee Signal Boat and hail her bow number until acknowledged by the Race Committee.

8.2. A boat that retires from a race or does not intend to compete in a race shall notify the Race Committee as soon as practicable.

9. THE COURSES

9.1. No later than the warning signal, the RC Signal Boat will display the course, approximate compass bearing and distance to Mark 1. The Race Committee intends to broadcast this information via VHF. Failure to broadcast or receive this information shall not be grounds for redress by a boat. This changes rule 62.1(a).

Course 3: Start - 1 - 1a - Gate - Finish (Upwind)

Course 4: Start - 1 - 1a - Gate - 1 - 1a - Finish (Downwind)

Course 5: Start - 1 - 1a - Gate - 1 - 1a - Gate - Finish (Upwind)

9.2. Marks 1 and 1a shall be rounded to port. Mark 1a is an offset mark and will be positioned to port of Mark 1.

9.3. If only one Gate mark is set, boats shall round the single mark to port.

9.4. Except when there is a change of course, the Gate will be positioned approximately to windward of the RC Signal Boat.

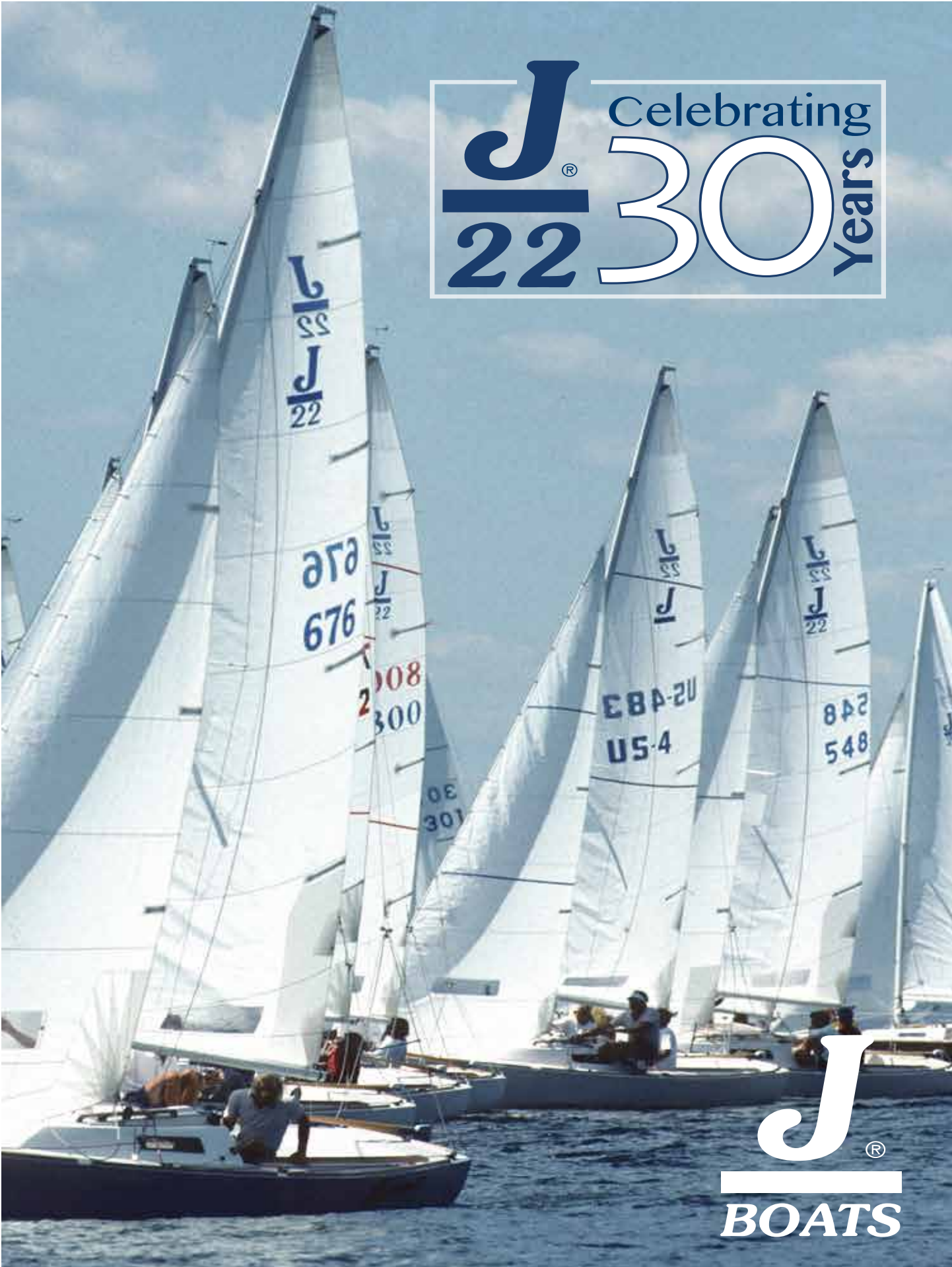


**Watch the legends of J22 race in Sail Newports new J22 Fleet
J Boats Legends Regatta
Monday, September 30
4 pm**

**Join us in the Hospitality Tent and grab a beer
Legend Line-up:**

**Rod Johnstone, Chip Carpenter, Galen Freeman, Hale Walcoff, Steve Ulian, Kevin Doyle,
Brad Read, Mark Foster, Cory Sertl, Chris Princing, Lars Hansen, Terry Flynn**

J[®]
22 Celebrating **30** Years



J[®]
BOATS

9.5. The Gate may be laid after the starting signal.

9.6. Except when there is a change of course:

(a) the finish for course 4 will be to leeward of the Gate; and

(b) the finish for courses 3 and 5 will be to windward of Mark 1.

10. MARKS

10.1. Marks 1, 1a, and Gate marks will be round yellow inflatable buoys.

10.2. New marks, as provided in SI 12.1, will be round orange inflatable buoys.

10.3. The finishing mark will be an orange tetrahedron inflatable mark.

11. THE START

11.1. The starting line will be between a staff with an orange flag on a race committee signal boat at the starboard end and a staff with an orange flag on a race committee boat at the port end, OR a staff with an orange flag on a race committee signal boat at the starboard end and the course side of an orange inflatable mark at the port end of the line.

11.2. A boat starting later than five (5) minutes after her starting signal will be scored Did Not Start (DNS) without a hearing. This changes rules 63.1, A4 and A5.

12. CHANGE OF THE NEXT LEG OF THE COURSE

12.1. To change the next leg of the course, the RC will lay a new mark (or move the finishing line) and remove the original mark as soon as practicable. When in a subsequent change a new mark is replaced, it will be replaced by an original mark.

12.2. If Mark 1 is changed after the start of a race, there will be no offset mark (Mark 1a).

13. THE FINISH

13.1. The finishing line will be between a staff displaying an orange flag on a Race Committee boat and the course side of the finishing mark.

13.2. Code flag "A" displayed, with no sound, while boats are finishing means "No more racing today."

14. TIME LIMITS AND TARGET TIMES

14.1. If no boat has passed Mark 1 within forty-five (45) minutes of the start, the race will be abandoned.

14.2. If no boat has sailed the course and finished within two (2) hours of the start, the race will be abandoned.

14.3. Boats failing to finish within thirty (30) minutes of the finish time of the first boat to sail the course and finish in accordance with rule 28.1 shall be scored "TLE" (Time Limit Expired) without a hearing. A "TLE" score shall be two more points than the number of boats that have finished within the thirty minute window defined herein. This changes rules 35, A 4.1, A 4.2, A5 and A11.

15. PROTESTS AND REQUESTS FOR REDRESS

15.1. Protest forms are available from the Race Office, located inside the Sail Newport Waterfront Center. Protests and requests for redress or reopening shall be delivered there within the appropriate time limit.

15.2. The protest time limit is 60 minutes after the docking of the Race Committee Signal Boat.

15.3. The protest time limit will be posted on the Official Notice Board.

15.4. Notices informing competitors of hearings in which they are parties or named as witnesses will be posted on the Official Notice Board. Hearings will be held in the protest room, located in the Sail Newport Waterfront Center.

15.5. Breaches of SI 1.4, 8, 17, 18, 19.4, 19.5, 20, and 24 will not be grounds for a protest by a boat. This changes rule 60.1(a). Penalties for these breaches may be less than disqualification if the Jury so decides. The scoring abbreviation for a discretionary penalty imposed under this instruction will be DPI.

15.6. On the last day of the regatta a request for reopening a hearing shall be delivered within the protest time limit if the party requesting reopening was informed of the decision on the previous day; no later than 30 minutes after the party requesting reopening was informed of the decision on that day. This changes rule 66.

15.7. On the last scheduled day of racing a request for redress based on a jury decision shall be delivered no later than 30 minutes after the decision was posted. This changes rule 62.2.

15.8. Decisions of the International Jury will be final as provided in rule 70.5.

15.9. If the RC posts a list of boats scored OCS, ZFP or BFD on the Official Notice Board before the protest time limit, a request for redress based on such a posted score shall be made no later than 30 minutes after the protest time limit. This changes rule 62.2.

16. SCORING

16.1. The Low Point scoring system of rule Appendix A shall apply.

16.2. Four (4) races are required to be completed to constitute a championship.

16.3. When fewer than five (5) races have been completed, a boat's series score shall be the total of her race scores. When five (5) or more races have been completed, a boat's series score will be the total of her race scores excluding her worst score.

17. REPLACEMENT OF CREW OR EQUIPMENT

17.1. Substitution of competitors will not be allowed without prior written approval of the Organizing Authority.

17.2. Substitution of damaged or lost equipment will not be allowed unless approved by the Organizing Authority.

17.3. Requests for substitution shall be made at the first reasonable opportunity.

18. EQUIPMENT AND MEASUREMENT CHECKS

18.1. A boat or equipment may be inspected at any time for compliance with the Class Rules and Sailing Instructions.

19. BERTHING, HAUL-OUT, AND OTHER RESTRICTIONS

19.1. Hoist use and dockage is included in the entry fee. Hoists for use by competitors are located at the Sail Newport's Admiral's Pier.

19.2. Dockage will be available for competing boats in the Alofsin Pier Basin on the north end of the Sail Newport property. Dockage is available on a first come, first serve basis.

19.3. Boats are advised of the need to bring extra dock lines and fenders as there may be a need to raft.

19.4. Boats shall not be hauled out and rudders shall remain affixed for the duration of the event beginning at 1800 on September 30 except with and according to written permission from the OA.

19.5. Dehumidifiers or heaters shall not be used on boats after 2000 on September 30.

20. DIVING EQUIPMENT AND PLASTIC POOLS

20.1. Underwater breathing apparatus and plastic pools or their equivalent shall not be used around keelboats for the duration of the event beginning at 1800 on September 30.

21. PRIZES

- 21.1. The overall winning boat and crew will acquire the title “2013 World Champion” and will be awarded the International Class Trophy.
- 21.2. Prizes will be awarded to the top ten skippers and crew.
- 21.3. Prizes will be awarded to the race winner of each race.
- 21.4. Other prizes may be awarded at the discretion of the Organizing Authority.

22. DISCLAIMER OF LIABILITY

- 22.1. Competitors participate in the regatta entirely at their own risk. See rule 4, Decision to Race. The Organizing Authority will not accept any liability for material damage or personal injury or death sustained in conjunction with or prior to, during, or after the regatta.

23. INSURANCE

- 23.1. Each participating boat shall be insured with valid third-party liability insurance.
- 23.2. The boat is required to hold adequate insurance including third-party insurance, and it is the owner/charterer or competitor’s sole and inescapable responsibility to ensure that the insurance is in place and is adequate prior to participating in this event.

24. MEDIA RIGHTS

- 1.1. Competitors give absolute right and permission for video footage and photographs of themselves or their boat to be published in any media for press, editorial, or advertising purposes.

Notice to Competitors

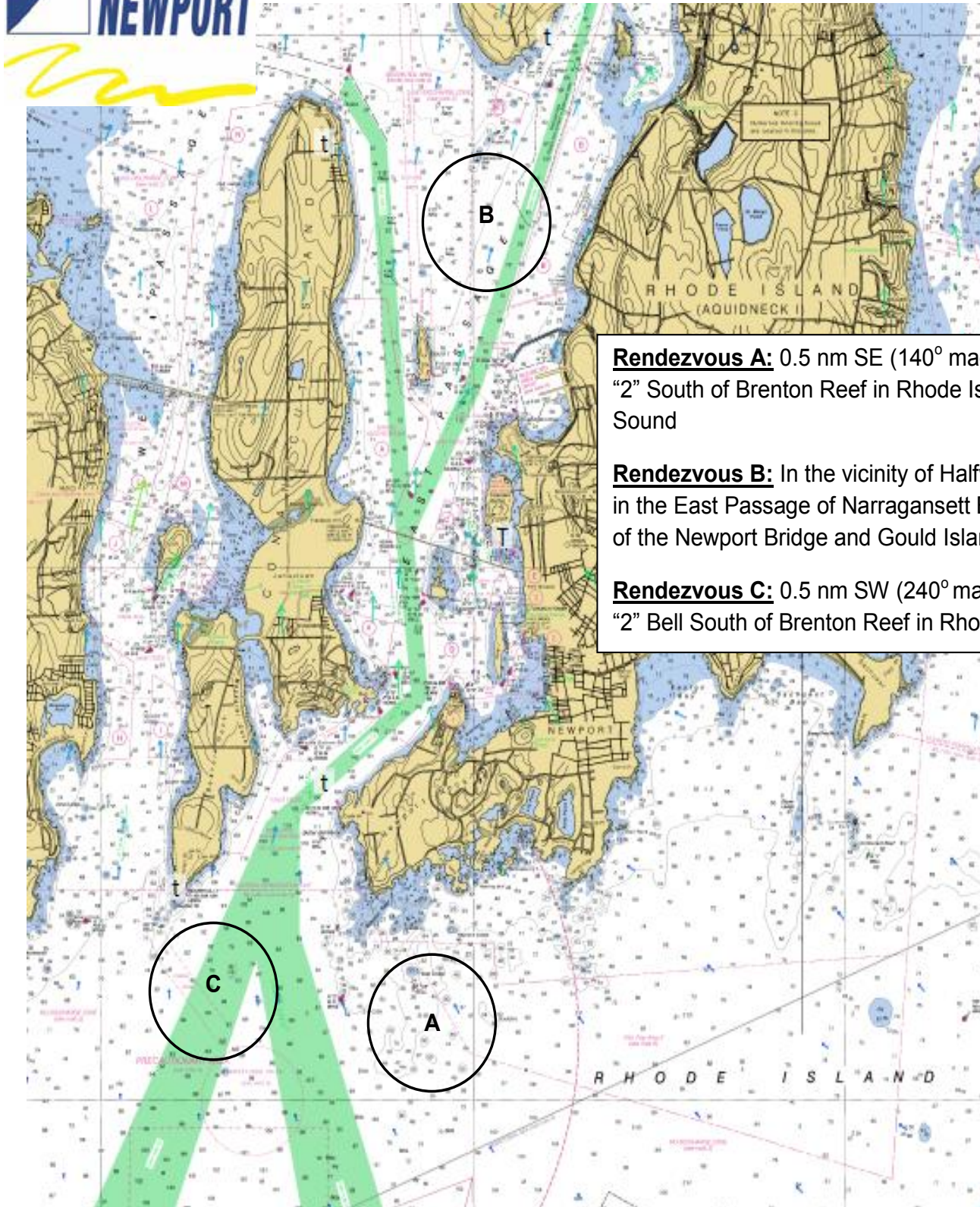
Competitors are reminded that Narragansett Bay is a restricted channel and sailboats may not have right of way over vessels who may be restricted in their ability to maneuver.

THE **SPEED PUCK** IS
NOW J/22 CLASS LEGAL.
Sail faster.



VELOCITEK

Appendix A- Racing Area Locations



Rendezvous A: 0.5 nm SE (140° mag) from R "2" South of Brenton Reef in Rhode Island Sound

Rendezvous B: In the vicinity of Halfway Rock in the East Passage of Narragansett Bay, North of the Newport Bridge and Gould Island

Rendezvous C: 0.5 nm SW (240° mag) from R "2" Bell South of Brenton Reef in Rhode Island



Appendix B- US SAILING Prescriptions

The following US SAILING prescriptions to rules 67, 76.1, and added rules 61.4 and 82 shall apply:

Rule 67 After rule 67 add:

US SAILING prescribes that:

- (a) A boat that retires from a race or accepts a penalty does not, by that action alone, admit liability for damages.
- (b) A protest committee shall find facts and make decisions only in compliance with the rules. No protest committee or US Sailing appeal authority shall adjudicate any claim for damages. Such a claim is subject to the jurisdiction of the courts.
- (c) A basic purpose of the rules is to prevent contact between boats. By participating in an event governed by the rules, a boat agrees that responsibility for damages arising from any breach of the rules shall be based on fault as determined by application of the rules, and that she shall not be governed by the legal doctrine of 'assumption of risk' for monetary damages resulting from contact with other boats.

Rule 76.1 After rule 76.1 add:

US SAILING prescribes that an organizing authority or race committee shall not reject or cancel the entry of a boat or exclude a competitor eligible under the Notice of Race and Sailing Instructions for an arbitrary or capricious reason or for reason of race, color, religion, national origin, gender, sexual orientation, or age.

Rule 61.4 Add rule 61.4:

61.4 Fees for Protests and Requests for Redress

US SAILING prescribes that no fees shall be charged for protests or requests for redress.

Rule 82 Add rule 82:

82 Indemnification or Hold Harmless Agreements

US SAILING prescribes that the Organizing Authority shall not require a competitor to assume any liabilities of the organizing authority, race committee, protest committee, host club, sponsors, or any other organization or official involved with the event. (This is commonly referred to as an 'indemnification' or 'hold harmless' agreement.) Go to ussailing.org/racingrules/documents and click the 'Indemnification' link for more information.



FASTER BY DESIGN 
One Design

Good Luck and Welcome to Newport!

For assistance during the regatta, contact :



Allan Terhune



Will Welles



Jeff Todd



Benz Faget



Nick Turney



Mike Marshall