



# Jazz Cup 2012

Saturday, September 1, 2012

## Sailing Instructions

Sponsored by:

**South Beach Yacht Club & Benicia Yacht Club**

### 1.0 Rules:

- 1.1 Regatta will be governed by the Racing Rules of Sailing 2009-2012 (RRS), and as changed by these sailing instructions.
- 1.2 This event is classified as Category A.
- 1.3 RRS 40 is changed as follows: All competitors are required to wear a lifejacket or other adequate personal floatation device while racing. The Y flag will not be displayed.

### 2.0 Entry & Sail Numbers:

- 2.1 Eligible boats shall complete registration online ([www.southbeachyachtclub.org](http://www.southbeachyachtclub.org)) in accordance with the Notice of Race.
- 2.2 All boats are invited to participate. Each boat shall have a 2012 Northern California PHRF or BAMA handicap certificate or be a class-legal one design whose class is a member of SF Bay ODCA, WBRA or US Sailing.
- 2.3 Boats without a 2012 Northern California PHRF handicap certificate shall be assigned a PHRF rating by the Race Committee.

### 3.0 Communications with Competitors:

- 3.1 Official notices will be posted on the south windows near the entry doors of the South Beach Yacht Club.
- 3.2 Changes to the Sailing Instructions and any notices to competitors will be posted by 2000 on August 31, 2012 at South Beach Yacht Club's website- [www.southbeachyachtclub.org](http://www.southbeachyachtclub.org).
- 3.3 Any changes to the Sailing Instructions to be made on the water will be broadcast on VHF channel 78 prior to the first warning signal and a code "L" flag will be flown from the Race Committee Boat.
- 3.4 RRS 41 is changed to allow for On-the-water communication between the Race Committee and competitors. Competitors should monitor VHF 78 for On-the-Water communications with the Race Committee.

### 4.0 Check-In:

- 4.1 Boats are *required* to check in by radio between 0950 and 1050 on VHF channel 78. No radio check in will be accepted after 1050. When checking in, please give only your division and sail number.

### 5.0 Schedule of Race:

- 5.1 The scheduled time of the first warning signal for the race is 1100 hours.

## 6.0 Racing Area:

6.1 The race area will be in the Central SF Bay, San Pablo Bay and the Carquinez Straits.

7.0 **The Course:** The course is described as Start, YRA 7 (starboard), Mark 25 (port), Temp A (port), Temp B (port), Finish

## 8.0 Description of Marks:

**YRA 7** – R “2” FI R 6s approximately 1nm NW of Treasure Island.

**Mark 25** – Channel Marker G25 approximately 0.6nm East of Benicia Marina.

**Temp. A** – A temporary YC buoy approximately 1.2nm East of Mark 25.

**Temp. B** – A temporary YC buoy 0.2nm off Temp A, between Temp A and the shore.

## 9.0 Starting Lines:

9.1 The Starting Line shall be a line between an orange flag on the Committee Boat and an inflatable mark located near the northeast end of Treasure Island.

### 9.2 Starting Order:

#### Starting Order Division (Division Flag)

1100 Warning  
Div D Non-Spinnaker D (Delta)  
Div E Spinnaker 177 and above E (Echo)  
Div F Spinnaker 141 to 176 F (Foxtrot)  
Div G Spinnaker 120 to 140 G (Golf)  
Div H Spinnaker 99 to 119 H (Hotel)  
Div J Spinnaker 66 to 98 J (Juliet)  
Div K Sportboats\* K (Kilo)  
Div O Spinnaker 48 or less O (Oscar)  
Div Q Multi-Hull 90 Q (Quebec)

*\* Based on YRA classification of Sportboats.*

9.3 Races shall be started under RRS 26 at 5-minute intervals.

9.4 A boat whose warning signal has not been made shall keep clear of the starting area and clear of all boats whose warning signal has been made. Boats not conforming may be protested by Race Committee.

9.5 A boat shall not start later than 15 minutes after her starting signal. A boat starting later than 15 minutes after her starting signal will be scored DNS. This changes RRS 35.

## 10.0 Recalls

10.1 Individual: The Race Committee shall hail the sail number of the boat(s) identified on the course side of the starting line at the starting signal. Failure of a hail, failure to hear the hail or the order of the hails shall not be grounds for Redress. This changes RRS 62.1(a).

10.2 General Recall: A fleet with a general recall will have the start moved to the position following the last regular starting sequence. This changes RRS 29.2.

## 11.0 The Finish:

11.1 The Finish Line shall be a line from an orange flag on the dock ashore Sander’s Pier and an inflatable mark east of the entrance to Benicia Marina. Three limiting marks shall be placed on the shoreward side of the finishing line. These marks may not be on the finish line but it must be left to starboard when finishing- refer to Attachment 1.

11.2 Boats retiring before finishing shall notify the Race Committee as soon as practical either on

VHF 78 or 415-760-2606.

## **12.0 Restricted Areas**

**12.1** Boats shall not pass thru the start line except for preparing to start or starting.

**12.2** All Restricted Areas shall be kept clear for the safety of both vessel traffic and competitors. Boats entering a restricted area shall retire or face protest and disqualification. In particular, the Race Committee would like to remind racers in particular of the following:

**12.2.1 RICHMOND LONG WHARF**, the Richmond Wharf is restricted by a line connecting the three buoys G "3" Fl G 4s (1/3 nm south of Richmond Long Wharf), R "2" Q R (1/2 nm west of Richmond Long Wharf) and R "2CR" Fl R 4s (Castro Rock buoy) – to East. No part of a boat shall cross the imaginary line between these buoys.

**12.2.2 THE PINOLE SHOAL CHANNEL**, bounded by markers #8, #10, #12 and #14 on the South and markers #7, #9, #11, #13 and #15 on the North (see USGC Chart #18654), shall be left to the north by all participating yachts and will rank as an obstruction. No part of a boat shall cross an imaginary line between any of the markers listed in this paragraph. This area **MUST** be kept clear for the safety of both vessel traffic and competitors.

## **13.0 Commercial Traffic and Safety**

**13.1** Boats shall not impede the passage of commercial vessels and shall comply with the U.S. Inland Navigation Rules Act of 1980.

## **14.0 Time Limit:**

**14.1** Boats not finishing by 1900 hours will be scored “DNF”. This modifies RRS 35.

## **15.0 Protests:**

**15.1** Protest and requests for redress shall be filed no later than 60 minutes of the protesting boats finish time or 1930 hours - whichever is earlier. Protests and requests for redress shall be written on standard US SAILING Protest Forms. Protest Forms are available at the Benicia YC from the Race Committee. Protests are to be turned in to the Principal Race Officer.

**15.2** The time and place of all protest hearing(s), the boat(s) being protested and boat(s) requesting redress shall be posted on the Regatta Notice Board at the Benicia YC. It is the Protest Committee’s intent to conduct all hearings immediately after the race or as soon as practical. It is each boat’s responsibility to check the Regatta Notice Board in a timely fashion to see if they are a party to a protest or redress hearing. This shall serve as proper notification per RRS 63.2.

**15.3** Except for RRS 69, and at the discretion of the Protest Committee Chair, hearings will take place as scheduled with or without the presence of all parties.

**15.4** Prior to a juried protest hearing per RRS 63.1, a protest may be withdrawn by the party who filed it. Once withdrawn, it can not be reopened, appealed or redressed

## **16.0 Scoring:**

**16.1** PHRF Time-on-Time correction will be used. Corrected times will be calculated to the nearest second.

**16.2** A boat racing that has broken a rule of Part 2 while racing, may take a scoring penalty (an “After Scoring Penalty” or “ASRP”) after she is no longer racing and prior to the start of a protest hearing involving the incident. Her ASRP will be 20% as described in RRS 44.3(c), which shall be applied to her class and her overall standings. If a boat caused injury, serious damage or if she gained significant advantage due to her breach, RRS 44.1(b) shall be

applied and her penalty shall be to retire.

**17.0 Trophies:** Trophies will be awarded on the day of the race at the Benicia Yacht Club at approximately 2000 or later, as necessary.

**18.0 Disclaimer of Liability**

**18.1** Boats and competitors compete in the Regatta entirely at their own risk. See RRS 4 - Decision to Race. The organizing authority, the South Beach Yacht Club, the Benicia Yacht Club and/or any of their collective agents or representatives will not accept any liability for material damage, personal injury or death sustained in conjunction with or prior to, during or after the Regatta.

**19.0 Environmental Responsibility:** Participants are encouraged to minimize the environmental impact of the sport of sailing. The following are practices we would like to request skippers to include as part of their participation in the regatta:

- Prevent discharge of untreated sewage (discharge is currently prohibited by law).
- Use of non-toxic cleaning products.
- Keep a bilge sponge and fueling spill pad onboard.
- Encourage use of refillable water bottles instead of single-use plastic bottles.
- Use biodegradable products for eating utensils, napkins, plates and cups.
- Use non-toxic bottom paint when possible.
- Contain pollutants from sanding or fairing on boats.

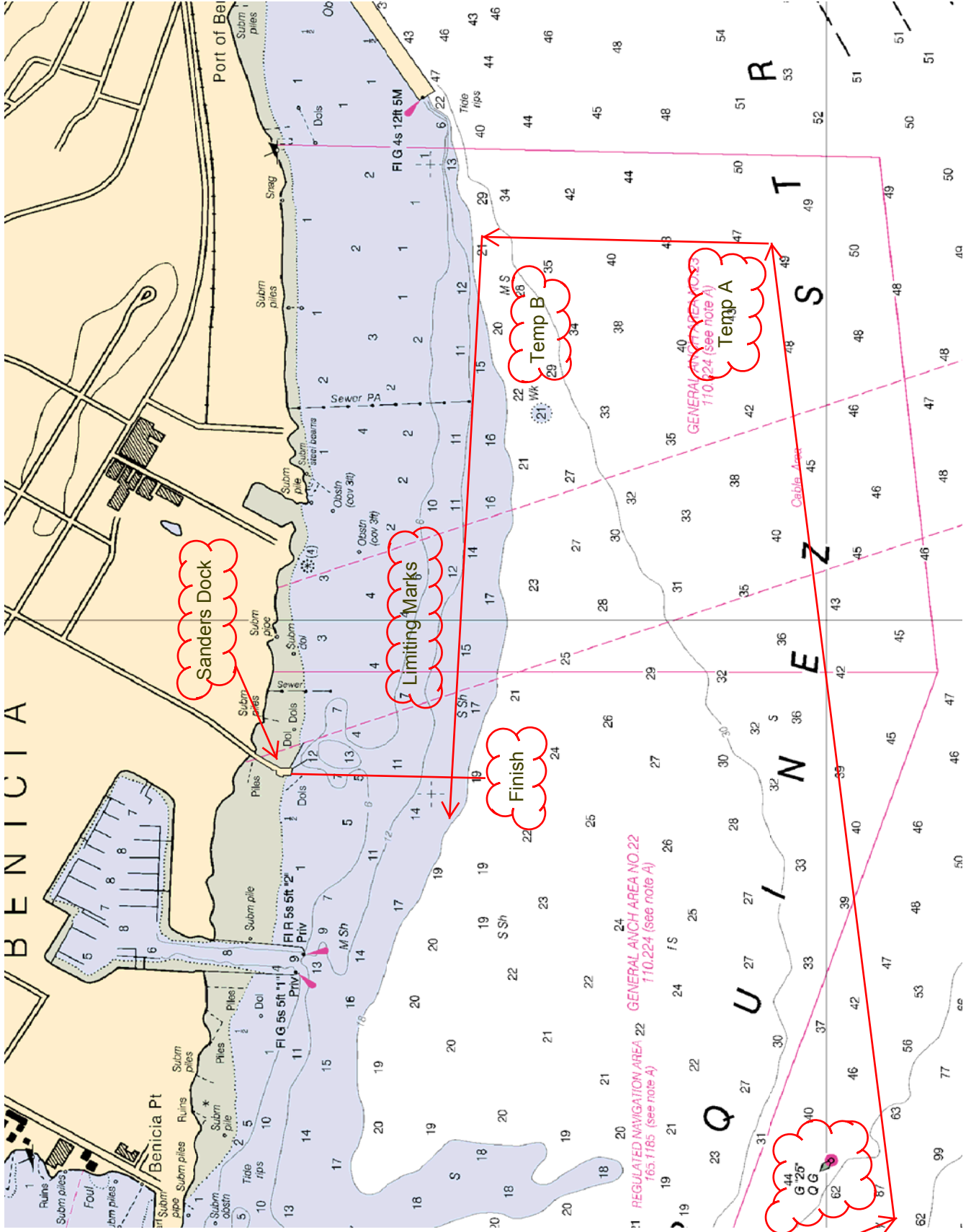
**Hospitality (Not Part of Sailing Instructions)**

Saturday, September 1st – Benicia will have a live jazz saxophone player/music scheduled 4:00 pm to 7:00 pm and a band for dancing starting at 8:00. So dance it up!

The Bar will be open all afternoon, with drinks moderately priced. Dinner will be served beginning at 5:00 – 5:30 pm.

**Please remember to follow the directions of the Harbor when rafting up Saturday afternoon and breakup on Sunday. It's important all Racers comply to ensure everybody has a GREAT time in Benicia.**

2012 Jazz Cup  
Attachment 1



2012 JAZZ CUP  
Divisions

SKIPPER	CLUB	SAIL #	BOAT NAME	MANUFACTURER	MODEL	RATING
<b>PHRF NON-SPINNAKER</b>						
1 Fred Dozsa	RCYC	red trian	Adios	Jeanneau	Attalia	156
2 Stanley Starkey	-	372	SELENE	Cheoy Lee	Offshore 40	180
3 Lori Dennis	RYC	3847	Jack Aubrey	Cal	227	210
4 Joe Bello	-	0	Machelle Marie	Jeanneau	49DS	84
<b>PHRF SPINNAKER (177 &amp; ABOVE)</b>						
5 Richard vonEhrenkrook	SFYC	624	Can o'Whoopass	Jensen Marine	Cal 20	273
6 Chris Klein	RYC	5132	Alegre	Schock	Santana 22	234
7 Don Kunstler	TYC	8191	Don Wan	Schock	Santana	186
8 gerald martin	BYC	1266	Alte Liebe	Albin	Ballad 30	183
9 Rick Riccardi	SBYC	5205	Katmandu	Hunter	30	180
10 RAY HALL	SBYC	5504	DANCING BEAR	CATALINA	30	180
11 Mike Kastrop	SBYC	1210	Goose	Catalina	Catalina 30	180
12 Steve Strunk	VYC	38064	Cold Drinks	Capital yachts	Newport 30Mk III	177
<b>PHRF SPINNAKER (141 TO 176)</b>						
13 Jennifer Hinkel	PBYC	8214	Ouessant	Stephens Brothers	Farallon Clipper	156
14 Rob Swenson	SBYC	559	Happy Days Again	Catalina	34	153
15 michael weaver	BYC	28815	Kelika	Hunter	33.5	150
16 Mark English	STFYC	138	Mas!	Moore	24	150
17 Laurence Baskin	-	108	Laurence Baskin	Catalina 34	34	147
18 Chuck Hooper	SSA	63336	Warwhoop	Contessa 33	sloop	144
19 Doug Gooding	SBYC	6776	Moondoggie	Islander	36	144
20 John Dillow	BYC	18723	Quila	Bill Lee Yachts	Santa Cruz 27	141
<b>PHRF SPINNAKER (120 TO 140)</b>						
21 Gordie Nash	RYC/CYC	3113	Arcadia	modernised Gary Mull	Santana 27	135
22 Bill Moore	SFYC	67	Shenanigans	Alberg Bros.	Express 27	129
23 Steve Carroll	RYC	18178	Tule Fog	Alberg Bros.	Express 28	130
24 Pat Broderick	SSS	28890	NANCY	Wylie	Wyliecat 30	129
25 Bill Davidson	SBYC	67572	Sirocco	Soverel	30MH-IV	126
26 Joan Byrne	SBYC	41327	Heart Of Gold	Olson	911S	126
27 Grant Harless	BYC	18158	Bay Loon	Pierson/Johnstone	J-29	123
28 Noble Griswold	BYC	119	E Ticket	Beneteau	Moorings 38 SD	120
<b>PHRF SPINNAKER (99 TO 119)</b>						
29 Ron Brown	SYC	88	Black Sheep	Beneteau	Farr 25	117
30 Dan Gaudy	SBYC	87586	Flight Risk	Catalina	C38	117
31 Andy Newell	BERKELEY YC	30980	Ahi	WD Schock	Santana 35	114
32 Jim Quanci	RYC	8538	Green Buffalo	Jenson Marine	Cal 40	114
33 Robert Hu	CPYC	179	MIST	Beneteau	First 38	111
34 jack vetter	VYC	28758	Tutto Bene	Beneteau	38s5	108
35 David Lee	BERKELEY YC	217	Utopia	pacific boats	Olson 30	99
36 Pat Shue	BYC	59608	Gettin Air	Olson	30	99
37 Andrew Macfie	RYC	77916	Hoot	Pacific Boats	Olson 30	99
<b>PHRF SPINNAKER (66 TO 98)</b>						
38 Hank Easom	SFYC	8526	Yucca	Dittmar	8 Meter	90
39 Paul Osborn	SBYC	28735	Savoir Faire	Beneteau	First 42	90
40 Don Ahrens	EYC	KA99	Red Cloud	Custom	Farr 36	87
41 George Brewster	SFYC	52715	Black Swan	Saga Yachts	409	78
42 David Gross	-	342	Nirvana		J-105	78
43 Nick Sands	SYC	38011	Escapade	Sabre	402	75
44 Wayne Lamprey	RYC	33007	Rhum Boogie	Holby Marine	Quest 33	75
45 Elvin Valverde	VYC	400	Joker	Pearson	J 35	72
46 Robert (Bob) Harford	BERKELEY YC	18278	Stewball	Alberg	Express 37	72
47 John Clauser	BYC/RYC	41001	Bodacious		Farr 40 1T	66
<b>SPORT BOAT</b>						
55 Todd Craig	FLYC	67967	Fugu	Wilderness Yachts	Wilderness 30	120
56 chris kim	RYC	28978	Vuja De	Ulitmate	24	111
57 Daniel Thielman	CYC	116	Kuai	Audi	Melges 20	111
58 Ben Landon	-	T650	Flight Risk	Thompson	T650	102
59 grant hayes	EYC	87112	vitesse too	hobie	hobie 33	90
60 Zhenya Kiruashkin-Stepanoff	BVBC/SCYC	163	Akyla	Hobie	33	81
61 Brook Dees	RYC	18	Salt Peanuts	Broosd Dees	GP 26	78
62 Daniel Alvarez	SSS	9045	JetStream		JS9000	63

2012 JAZZ CUP  
Divisions

	<b>SKIPPER</b>	<b>CLUB</b>	<b>SAIL #</b>	<b>BOAT NAME</b>	<b>MANUFACTURER</b>	<b>MODEL</b>	<b>RATING</b>
63	Scott Easom	SFYC	57	8 Ball	Carrol Marine	Farr 30	54
64	Stan Phillips	LGYC/SYC	USA 52	Frequent Flyer	Carroll Marine	Farr 30	54
65	Michael Radcliffe	BVBC	1001	Kilo	Timeless Marine	Synergy 1000	45
<b>PHRF SPINNAKER (48 OR LESS)</b>							
48	Shawn Price	SBYC	18929	Sea Stig	Santa Cruz	40	48
49	Bob Musor	VALLARTA YC	28693	Sceptre	Johnstone	J130	21
50	Mark Howe	RYC	USA 002	War Pony	Carrol	Farr 36	9
51	Michael Pohl	STFYC	US 40046	Twisted	Carroll MARine	Farr 40	0
52	Dave MacEwen	STFYC	28372	Lucky Duck	Santa Cruz	52	-21
53	Jay Spalding	GRAPEVINE SB	69910	MEDUSA	Santa Cruz	SC 52	-33
54	Robert Barton	STFYC	USA46056	Cipango	Andrews	Andrews 56	-39
<b>MULTI-HULL</b>							
66	William Cook	BYC	27062	Wings	Corsair	F-24 MKI	90
67	Richard Allen	BAMA	23	Nowhere Fast	Corsair	C24	66
68	Bill Roberts	BAMA	7	Emma	Corsair	C31-UC	60
69	Bill Gardner	EYC	247	Peregrine Falcon	Corsair	F 27 square top	51
70	mark eastham	BAMA/TYC/SSS	25411	MA'S ROVER	corsair	F-31 R	9
71	Alan O'Driscoll	BAMA	USA 1	HMB Boys & Girls Club	Custom	D Class Catamaran	-63
72	ian klitza	SCYC	88	rocket 88	serge pond	spruitt D-cat	-75
73	William Erkelens	RYC	44	Adrenaline	Custom	D Class catamaran	-75
74	Urs Rothacher	SV THALWIL	USA 4	BridgeRunner	Hakes	SL33	-105
75	Jerome Ternynck	BAMA		SmartRecruiters	Tornado Sport	Extreme 40	-115