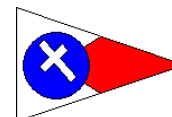


SANTA CRUZ YACHT CLUB
2012 FALL SCORE / DOUBLE HANDED SERIES
SAILING INSTRUCTIONS



244 Fourth Avenue, Santa Cruz, CA 95062, (831) 425-0690, fax (831) 425-7032, info@scyc.org

1. Rules

- 1.1 This series will be governed by the rules as defined in the *Racing Rules of Sailing*, the 2011-2012 SCYC Minimum Equipment Requirements (MER) as they apply to category 4 races for PHRF and category 5 races for the Double Handed division, and the rules of Monterey Bay PHRF.
- 1.2 Rule 40 is changed as follows: Competitors shall comply with the obligations of rule 40 (wear a PDF) whether or not the race committee displays flag Y with one sound.
- 1.3 Approximate Mark locations are shown in Appendix B. Some marks have **changed** position from their location in 2011.

2. Notices to Competitors & Signals Made Ashore

- 2.1 A Competitor's meeting is scheduled at the SCYC clubhouse for Sunday, August 19, 2012, at 1030 hours.
- 2.2 Notices to competitors will be posted on the SCYC Official Notice Board, located in the window opposite the bar at the northeast corner of the SCYC clubhouse and may be posted on-line.
- 2.3 Signals made ashore will be displayed from the SCYC clubhouse deck. When flag AP is displayed ashore, '1 minute' is replaced with 'not less than 60 minutes' in the race signal AP.
- 2.4 Changes to these Sailing Instructions will be posted by 1000 hours on the day they are to take effect, except any changes to Sailing Instruction 3, *Schedules & Class Flags*, will be posted by 2000 hours on the day before they take effect.
- 2.5 On the water the Race Committee may use VHF channel 68 for communication.

3. Schedules & Class Flags

- 3.1 A total of six races are scheduled. Two races are scheduled each of the following race days:

Sunday, August 19, 2012	Sunday, September 23, 2012	Sunday, October 28, 2012
-------------------------	----------------------------	--------------------------

- 3.2 The scheduled time of the warning signal for the first race each day is 1225 hours.
- 3.3 The second race for each division will follow shortly after the conclusion of the preceding race.
- 3.4 The division flags are as follows:

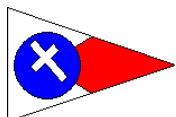
Division	PHRF of Monterey Bay Rating Band	Class Letter & Flag
A – Spinnaker	88 or below	F
B – Spinnaker	Above 89	E
DH – Double Handed	All PHRF	D
Jib & Main	PHRF < 181	K
Jib & Main	PHRF > 182	J

4. Courses, Marks, Racing Area

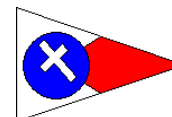
- 4.1 Racing will be around various marks between Capitola and Natural Bridges. Racing area is shown in Appendix A.
- 4.2 Course numbers will be signaled with numeral pennant(s) from the RC boat.
- 4.3 Courses and Rounding Marks are described in Appendix B. The location of marks and the length of courses are approximate. Differences between the published location of a mark or course length in these Sailing Instructions and the actual location of a mark or length of a course shall not be grounds for redress.
- 4.4 A yellow inflatable temporary mark may be set in place of any mark listed in Appendix B at the approximate location of the missing mark. This changes rule 34.

5. The Starting and Finishing Lines,

- 5.1 The starting line will be between a staff displaying an orange flag on the race committee Signal Boat and mark S.



SANTA CRUZ YACHT CLUB
2012 FALL SCORE / DOUBLE HANDED SERIES
SAILING INSTRUCTIONS



244 Fourth Avenue, Santa Cruz, CA 95062, (831) 425-0690, fax (831) 425-7032, info@scyc.org

- 5.2 The finish line will be between a staff displaying an orange flag on a race committee Signal Boat and mark S.
- 5.3 Boats whose warning signal has not been made shall avoid the starting area during the starting sequence for other divisions.
- 5.4 A boat starting later than 4 minutes after her starting signal will be scored Did Not Start without a hearing. This changes rule A4.
- 5.5 Between a boat's preparatory signal and her start, she shall not hoist any part of her spinnaker higher than the main-boom gooseneck.

6. Recalls

- 6.1 After the starting signal, the race committee may hail the sail number(s) of the boat(s) identified on the course side of the starting line at the time of the starting signal by loud hail and/or VHF radio. The failure of a hail, the failure of a boat to hear a hail or the order of the hails shall not be ground for redress. This alters RRS 62.1(a)

7. Boat retiring before the finish

- 7.1 A boat retiring before finishing a race shall notify the Race Committee as soon as reasonably possible.

8. Time Limit

- 8.1 Boats failing to finish within 45 minutes after the first boat of her division sails the course and finishes will be scored Did Not Finish without a hearing. This changes rules 35, A4 and A5.

9. Scoring

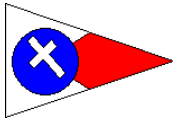
- 9.1 A minimum of three completed races constitutes a series.
- 9.2 If less than five races are completed there will be no throw outs. When five or more races are completed, a boat's series score will be the total of her race scores excluding her worst score. This changes rule A2.

10. Protests

- 10.1 Protest forms will be available at the SCYC regatta shed or at the SCYC clubhouse. Protests and requests for redress or reopening shall be delivered to the race committee or to the on duty club employee. This changes rule 61.3
- 10.2 The protest filing period expires 60 minutes after the Race Committee Signal Boat returns to the dock. The Signal Boat docking time and filing expiration time will be posted on the official regatta notice board.
- 10.3 Protest Hearings shall be scheduled by the Protest Committee following the event. Notice under rule 63.2 shall be provided by contact through the phone and/or email address provided by the Competitor with their entry.

11. Prizes

- 11.1 Prizes will be given at the discretion of the Organizing Authority.
- 11.2 Winners of divisions with three or more entries in the series will be eligible for the Cliff McNamara Invitational Champion of Champions Regatta.

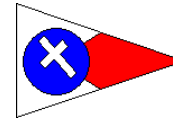


SANTA CRUZ YACHT CLUB

2012 FALL SCORE / DOUBLE HANDED SERIES

SAILING INSTRUCTIONS

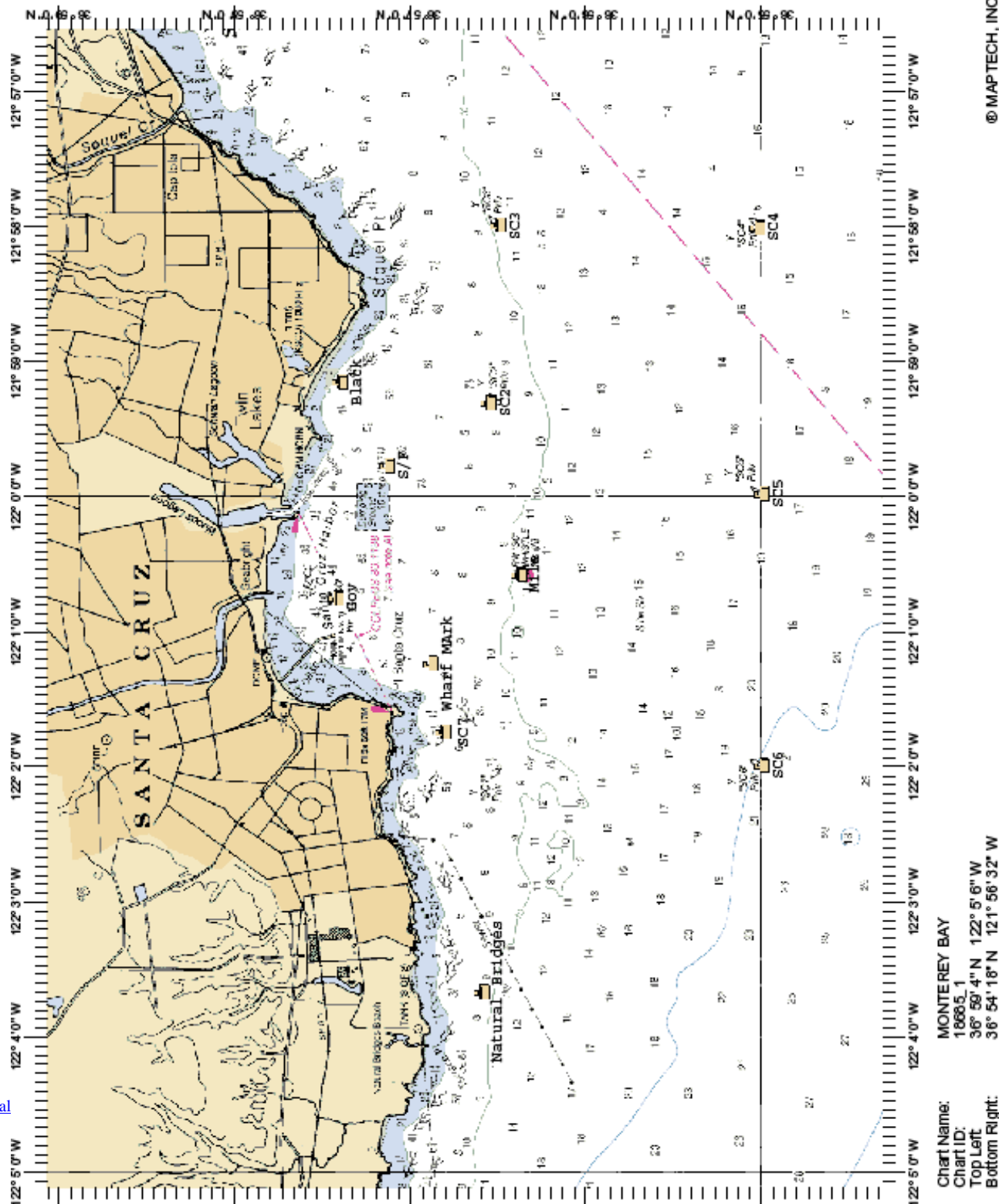
244 Fourth Avenue, Santa Cruz, CA 95062, (831) 425-0690, fax (831) 425-7032, info@scyc.org



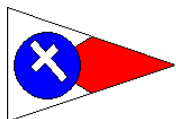
APPENDIX A – RACE AREA

FOR INFORMATIONAL PURPOSES ONLY NOT FOR USE IN NAVIGATION

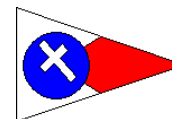
(WARNING – “SC2” AND “SC6” ARE MISSING, “S/F” AND “SC7” HAVE MOVED AS OF 3/12)



© MAPTECH, INC.



SANTA CRUZ YACHT CLUB
2012 FALL SCORE / DOUBLE HANDED SERIES
SAILING INSTRUCTIONS



244 Fourth Avenue, Santa Cruz, CA 95062, (831) 425-0690, fax (831) 425-7032, info@scyc.org

APPENDIX B

Courses & Mark Descriptions

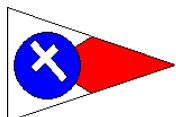
SOME MARK LOCATIONS HAVE CHANGED POSITION
FROM PREVIOUS SEASON'S LOCATIONS

Courses

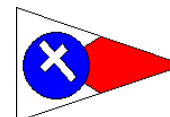
Approximate distances are provided solely as an aid, actual distances will be calculated from the placement of marks during the races.

p indicates a port rounding, s indicates starboard rounding

Course Number	Rounding Mark Order	Apx. Dist. NM
1	Start – NB p – SC3 p – OT p – Finish	12.41
2	Start – OT p – SC3 p – Wharf p - Finish	8.53
3	Start – NB p – SC3 p - Wharf p - Finish	11.74
4	Start – OT p – Black p – L p – Wharf p - Finish	6.52
5	Start – NB p – L p – OT p – Black p – Finish	10.35
6	Start – Wharf p – Black p – L p – Wharf p – Black p – L p – Wharf p - Finish	9.03
7	Start – NB p - Black p – Finish	7.13
8	Start – NB p – SC5 p – SC3 p – NB p – SC3 p – Finish	19.29
9	Start – OT p – L p – OT p – Black p – Finish	7.12
10 (one over zero)	Start – Wharf p – L p - Wharf p - Finish	5.16
12 (one over two)	Start – Wharf p – Black - p - Finish	3.20
13 (one over three)	Start – SC6 p – L p – Mile p - Finish	7.69
14 (one over four)	Start – SC3 p – Wharf p – SC3 p – Mile p – Finish	9.77
15 (one over five)	Start – Gov. p – SC3 p – Gov p – SC3 p – Finish	9.54
16 (one over six)	Start – SC5 p – SC3 p - Black p – SC5 p – Black p – Finish	14.55
17 (one over seven)	Start – Mile p – L p – Mile p – Finish	4.14
18 (one over eight)	Start – SC3 p – Gov p – SC3 p -- Finish	7.62
19 (one over nine)	Start – Black p – Wharf p – Black p – Wharf p – Finish	6.40
20 (two over zero)	Start – NB p – Mile p – Black p – Gov p – Mile p – Black p – Finish	11.04
21 (two over one)	Start – Harbor p – SC5 p – Harbor p – Wharf p – SC5 p – Harbor p – Finish	11.65
23 (two over three)	Start – Harbor p – Mile p – Harbor p – Gov p – SC3 p – Harbor p – Finish	8.21
24 (two over four)	Start – W p – L p – W p – Finish	4.00
25 (two over five)	Start – W p – L p – W p – L p – W p – Finish	6.00



SANTA CRUZ YACHT CLUB
2012 FALL SCORE / DOUBLE HANDED SERIES
SAILING INSTRUCTIONS



244 Fourth Avenue, Santa Cruz, CA 95062, (831) 425-0690, fax (831) 425-7032, info@scyc.org

ROUNDING MARK DESCRIPTION & APPROXIMATE LOCATION

NAME	ROUNDING MARK DESCRIPTION	LATITUDE	LONGITUDE
S	Unmarked yellow ball	36°57.09' N	121°59.62' W
NB	Unmarked yellow ball	36°56.58' N	122°03.67' W
Wharf	Unmarked yellow ball	36°56.87' N	122°01.24' W
Gov	Unmarked white/blue ball	36°57.47' N	122°00.72' W
Mile	Red/White Whistle buoy marked: "SC A"	36°56.35' N	122°00.56' W
Black	Unmarked yellow ball	36°57.22' N	121°59.29' W
SC2	Yellow cylinder marked "SC 2"	36°56.52' N	121°59.30' W
SC3	Yellow cylinder marked "SC 3"	36°56.49' N	121°58.00' W
SC5	Yellow cylinder marked "SC 5"	36°55.00' N	122°00.00' W
SC6	Yellow cylinder marked "SC 6"	36°55.00' N	122°02.00' W
OT	Inflatable Orange Tetrahedron	36°56.78' N	122°01.66' W
Harbor	Inflatable Orange Tetrahedron	36°57.47' N	121°59.88' W
		<u>APX BEARING</u>	<u>APX DISTANCE</u>
W	Inflatable Orange Tetrahedron	Bearing From the Signal Boat Displayed	Distance From the Signal Boat Displayed
L	Inflatable Yellow Tetrahedron	Bearing From the Signal Boat Displayed	100 yards to windward of the Signal Boat