

# 2012 Cliff McNamara Champion of Champions Invitational

Saturday March 30, 2013

**Santa Cruz Yacht Club**

Santa Cruz, California

## Notice of Race

### 1. Rules

- 1.1. The regatta will be governed by the rules as defined in *The Racing Rules of Sailing*.
- 1.2. Racing rule 40 will be changed to require competitors wear a personal flotation device while racing. The changes will appear in full in the sailing instructions. The sailing instructions may also change other racing rules.

### 2. Eligibility and Entry

- 2.1. This is an Invitational regatta for boats who have won a class in a SCYC series or regatta in the 2012 season and the 2012/2013 SCYC Midwinters Regatta.
- 2.2. A list of invited yachts will be posted on-line at the completion of the 2012/2013 SCYC Midwinters Regatta.
- 2.3. Eligible boats may enter on-line at <http://www.regattanetwork.com/event/6414> before 1200 Pacific Time, March 30, 2013. **All entries must be made on-line.**

### 3. Fees

- 3.1. The entry fee is \$40.

### 4. Schedule

- 4.1. There will be a competitors briefing **March 30, 2013 at 1100 hours** at the SCYC Clubhouse.
- 4.2. One race is scheduled.
- 4.3. The scheduled time of the warning signal is **1255 hours**.

### 5. Sailing Instructions

- 5.1. The Sailing Instructions will be available after **1100 on March 15, 2013** on-line and at the competitor's briefing.

### 6. Venue

- 6.1. Racing will be around inflatable buoys set between Capitola and Natural Bridges.
- 6.2. The starting area will be within 1.5 miles of Walton Lighthouse.

### 7. Course

- 7.1. The diagram in **Attachment A** below shows the course, including the approximate angles between legs, the order in which marks are to be passed, and the side on which each mark is to be left. The course length used in the PHRF handicap calculation will be nine (9) nautical miles.

## **8. Prizes**

8.1. The overall winner on corrected time will be designated as the **2011 Cliff McNamara Champion of Champions** and will have the boat name affixed to the perpetual trophy.

## **9. Disclaimer of Liability**

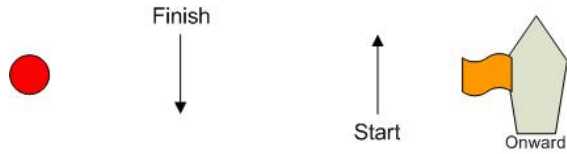
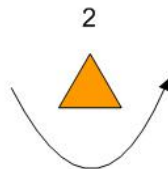
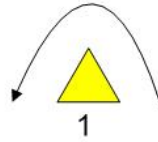
9.1. Sailing is an activity that has an inherent risk of damage and injury. Competitors in this event are participating entirely at their own risk. See RRS 4, Decision to Race.

9.2. The race organizers (organizing authority, race committee, protest committee, host club, sponsors, or any other organization or official) will not be responsible for damage to any boat or other property or the injury to any competitor, including death, sustained as a result of participation in this event. By participating in this event, each competitor agrees to release the race organizers from any and all liability associated with such competitor's participation in this event to the fullest extent permitted by law.

## **10. Further Information**

10.1. For further information contact [regatta@scyc.org](mailto:regatta@scyc.org)

Attachment A



Course  
Start – 1p – 2p – 1p – 2p – 1p - Finish

**Mark 1 and 2 are *Rounding Marks***