



**BUZZELLI**

**2013**

## **RACE GUIDE**

October 18-20, 2013

7<sup>th</sup> Annual Buzzelli Multihull Rendezvous

34<sup>th</sup> Stiletto Nationals

Sarasota Sailing Squadron





**BUZZELLI**

**2013**

**Thanks to all Sponsors**



**Bob's  
Family**



**DOWD**  
STUDIO & ARTWORKS



BANKING FOR  
GOOD™



High Performance Fabrics  
Distributed by



*Decorating Madness, Inc.*  
Custom Interior Design





# Schedule of Events

**BUZZELLI**  
**2013**

## Thursday, Oct. 17

**1800 – 2000** Check-in & Registration Open at SSS

## Friday, Oct. 18

**0800 – 0930** Check-in & Registration Open at SSS with complimentary continental breakfast donated by Einstein Bagels and Sarasota Seafood Market

**0930 – 1000** Skippers Briefing – required for Stiletto Nationals, optional for all others

**1100** Warning Signal for Race

**1800 – 2000** Check-in & Registration Open at SSS

**1800 – 2100** Complimentary Rum Party for Buzzelli racers with live music by Steel Pan Man, Gumbo donated by Salty Dog and Chili donated by John & Laura Proctor

## Saturday, Oct. 19

**0800 – 0930** Check-in & Registration Open at SSS with complimentary continental breakfast donated by Einstein Bagels and Sarasota Seafood Market

**0930 – 1000** Skippers Briefing

**1100** Warning Signal for Race

**1800 – 2200** Live music featuring Rocking Boats and Making Waves by Melanie Massell & Company

**~1830** Steak or chicken dinner catered by Guest Chefs

**~1930** Raffle with some great prizes

## Sunday, Oct. 20

**0800 – 0930** Complimentary continental breakfast donated by Einstein Bagels and Sarasota Seafood Market

**1030** Warning Signal for Race

**~1630** Awards and complimentary sandwiches/cold salad for Buzzelli racers by Maximillians



# BUZZELLI 2013 SAILING INSTRUCTIONS



## 1. Rules

The regatta will be governed by the rules as defined in *The Racing Rules of Sailing (RRS)*. If there is a conflict between the NOR and the Sailing Instructions, the Sailing Instructions will take precedence.

## 2. Notices to Competitors

Notices to competitors will be posted on the Official Notice Board located in the Squadron Pavilion.

## 3. Changes to Sailing Instructions

Any changes to the Sailing Instructions will be posted on the Official Notice Board one hour before warning signal on the date it takes effect, except any changes to the schedule of races will be posted by 1900 hrs on the day before it takes effect.

## 4. Signals Made Ashore

Signals made ashore will be displayed from the flagpole located east of the main building. Class flags will be raised with AP flag if the signal effects less than all classes. If a postponement is signaled ashore, the warning signal will be made not less than 60 minutes after AP is lowered.

## 5. Schedule

### Thursday, October 17

1800-2000 Check-in & on-site registration

### Friday, October 18

0800-0915 Check-in & on-site registration

0930 Skippers briefing

1100 Warning signal

1800-2000 Check-in & on-site registration

### Saturday, October 19

0800-0915 Check-in & on-site registration

0930 Skippers briefing

1100 Warning signal

### Sunday, October 20

1030 Warning signal

1500 No warning signal after this time

Awards to be presented as soon as possible after racing

## 6. Class Flags

The class flags will be posted on the Official Notice Board.

## 7. Courses and Marks

Gulf long distance race: attachment show approximate location of the marks and their description.

Bay courses: attachments show the diagrams including the approximate angles between legs, the order in which marks are to be passed, and the side on which each mark is to be left. At the discretion of the Race Officer the finish line may be separated from the start line and moved to the starboard side of the signal boat.

The courses will be posted on the starboard side of the signal boat at the starting line.

On Saturday and Sunday there will be multiple races, conditions permitted.

## 8. Racing Area

Sarasota Bay racing areas will be:

1. Far North - VHF 69
2. North Sandbar - VHF 71
3. Ringling Bridge VHF 72

Chart will be posted on Office Notice Board

## 9. Starts and Finishes

Gulf long distance race start area will be West of New Pass in the Gulf of Mexico. The starting line and the finishing line each will be between a staff displaying an orange flag and the New Pass government mark "NP".

Saturday & Sunday races will have starting line(s) between a staff displaying an orange flag and the start mark. The finishing line(s) will be between a staff displaying an orange flag and the finishing mark. Start & Finish lines are closed.

## 10. Penalty System

Rule 44.1 is changed so that the Two-Turns Penalty is replaced by the One-Turn Penalty.

## 11. Time Limit

Time limit for the Gulf distance race is 1900 hrs that day.

Time limit for Saturday and Sunday races is 30 minutes after the first boat of the class crosses the finish line.

Boats finishing after the time limit are scored DNF.

## 12. Protests

Protests shall be delivered to the main office within 1 hour after the signal boat's dock time. The protest time limit and a list of protests received will be posted on the notice board. Hearings will be held as soon as possible after racing each day in the protest room.

## 13. Rating and Scoring

Rating systems used will be PHRF and Portsmouth as appropriate for the fleet, classes, and divisions that are formed. If no rating is available, the rating committee will assign a rating that cannot be appealed for the regatta. Low point scoring system, time-on-distance for PHRF and time-on-time for Portsmouth, will be used.

One race constitutes a regatta. Friday scores will only count towards Stiletto Nationals. This changes RRS Rule A2.

## 14. Awards

Awards will be presented to the top finishers in each class. The "Robert Anthony Buzzelli Perpetual Trophy" will be awarded.

## 15. Disclaimer of Liability

Competitors participate in the regatta entirely at their own risk. See RRS 4, Decision to Race. Neither the organizers or the host organization will accept any liability for material damage or personal injury or death sustained in conjunction with or prior to, during, or after the regatta.



# BUZZELLI 2013 Friday Gulf Long Distance Race Course



Heading TO							
Distance NM		N	A	B	C	D	E
FROM	N		323	320	246	150	151
	A	143		317	159	145	147
	B	140	137		148	142	145
	C	65	340	328		118	140
	D	330	325	322	298		151
	E	331	327	325	320	331	
	N	8.7	17.6	2.6	3.8	13.9	
	A	8.8		8.8	8.5	12.6	22.6
	B	17.6	8.9		17.1	21.4	31.4
	C	2.6	8.5	17.1		4.8	14.4
	D	3.8	12.6	21.4	4.8		10.1
	E	13.9	22.6	31.4	14.4	10.1	

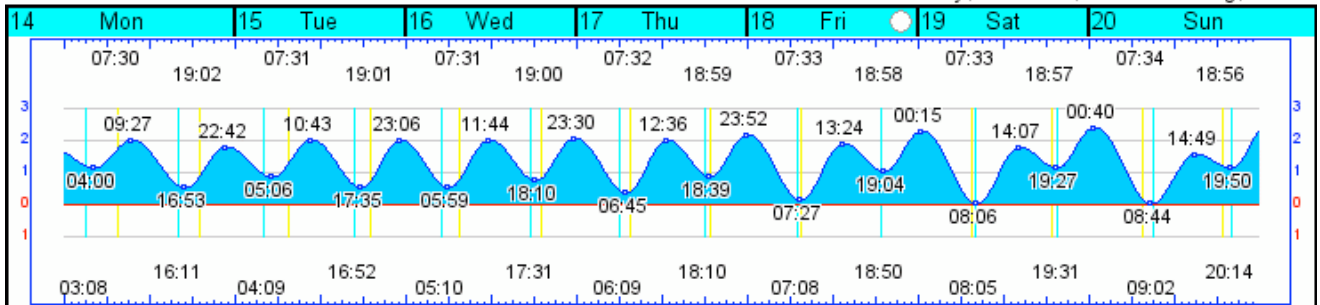
Description and Approximate GPS Waypoints (Oct. 5, 2013 data)			
Marker	Description	Lat	Lon
N	New Pass Channel "NP"	27 18.920	082 35.886
A	Longboat Pass Channel "LP"	27 25.847	082 41.846
B	Southwest Channel Green Pillar	27 32.588	082 48.416
C	USF Buoy C20	27 17.845	082 38.511
D	Big Pass Channel "BP1" Green Can	27 15.569	082 33.749
E	Venice Inlet "I"	27 06.767	082 28.211



Marker C - USF Buoy

October 2013

Sarasota Bay, Sarasota, St. Petersburg, Florida



©2013 FreeTideTables.com - For comparison only - Times are local - Tides in feet from MLLW

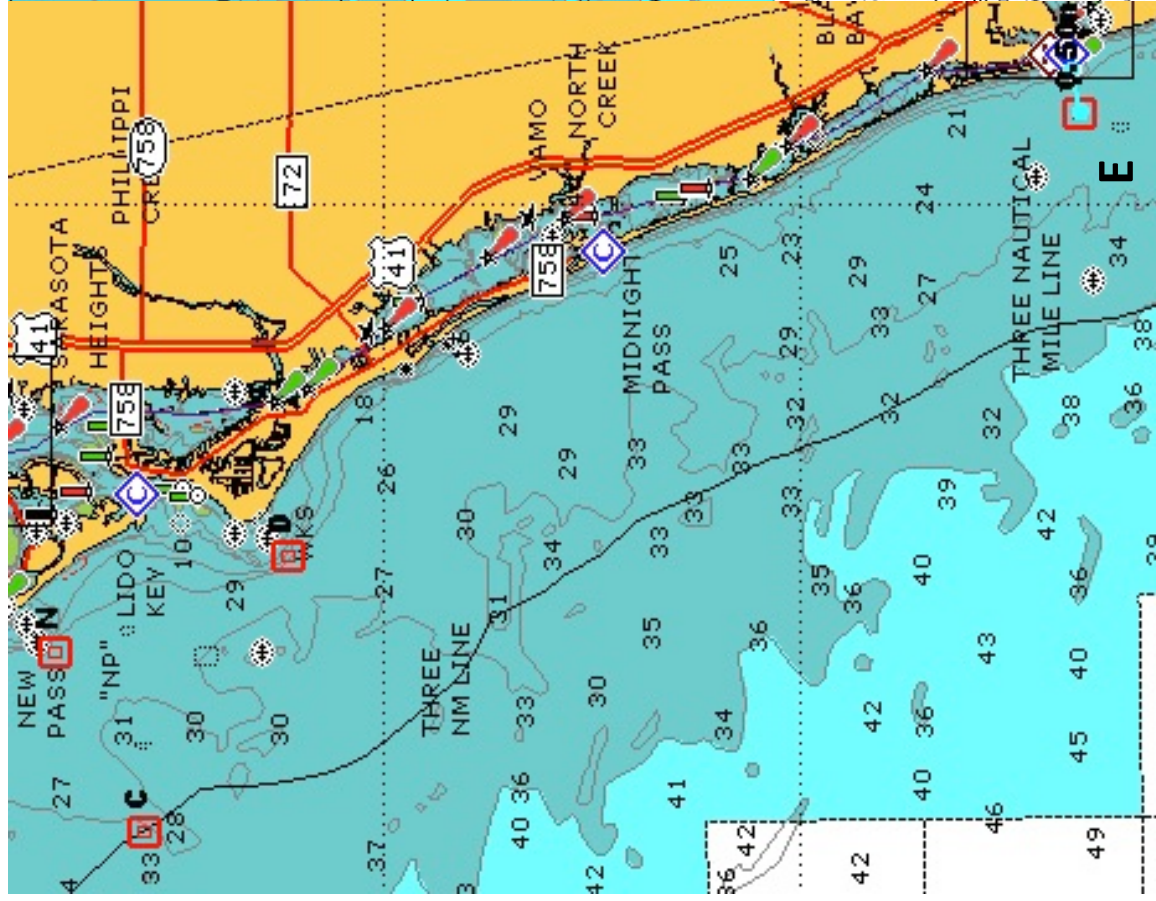




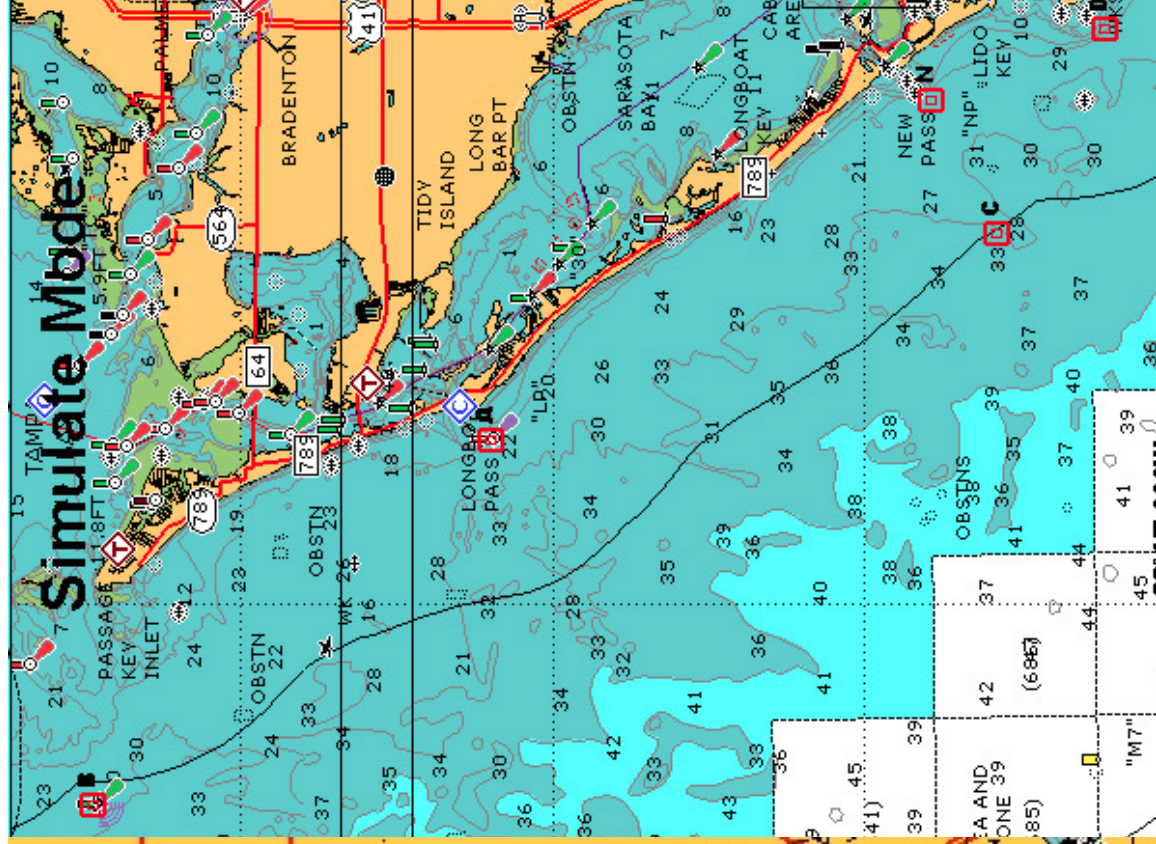
# BUZZELLI 2013



South Course Chart



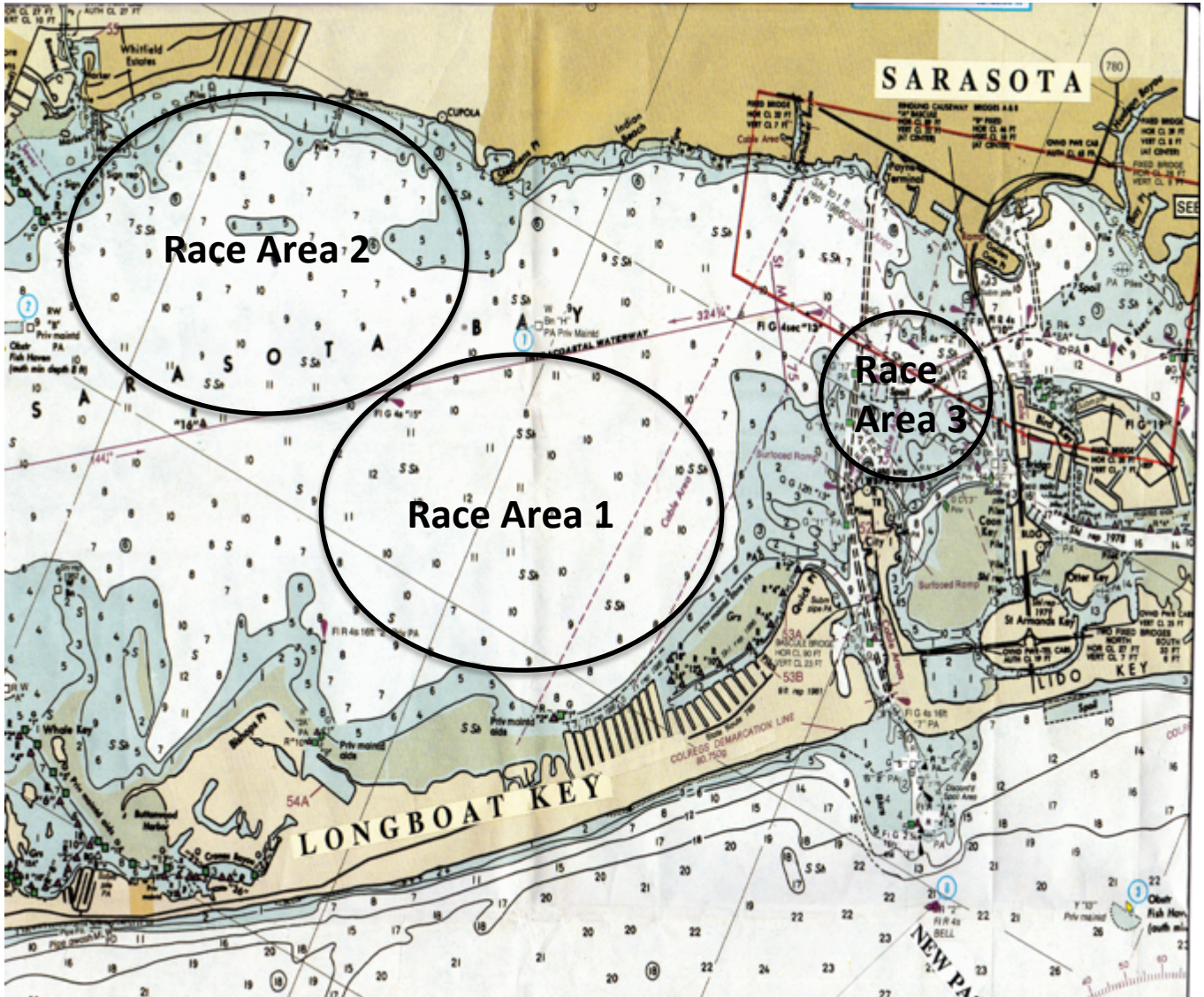
North Course Chart





# BUZZELLI 2013

## Approximate Sarasota Bay Location of Buzzelli Race Courses on Weekend



Course	VHF Channel	Mark Descriptions	Class Flags
Race Area 1	69	Course marks - Orange tetrahedrons Start, finish marks – Orange Balls	Class flags will be described at the initial skipper's meeting and the list posted on the
Race Area 2	71	Course marks – Yellow tetrahedrons Start, finish marks – Orange Balls	Class flags will be described at the initial skipper's meeting and the list posted on the
Race Area 3	72	Course marks - Green tetrahedrons Start, finish marks – Orange Balls	Class flags will be described at the initial skipper's meeting and the list posted on the

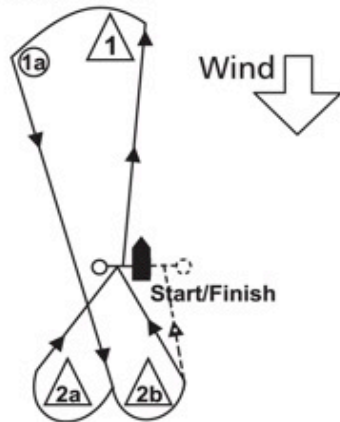


# BUZZELLI 2013



## Attachment II - Possible Courses

Course W



**W1**

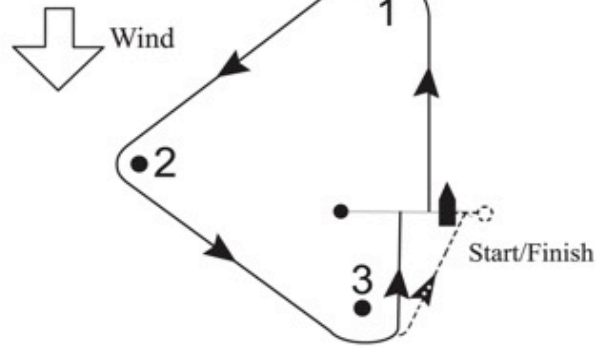
Start-1-1a-

between 2a (starboard) & 2b (port)-Finish.

**W2**

Start-1-1a-between 2a (starboard) & 2b (port)-  
1-1a-between 2a & 2b-Finish.

Course T



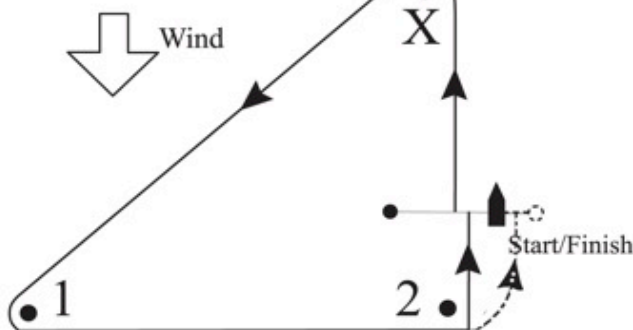
**T1**

start-1-2-3-finish.

**T2**

start-1-2-3-1-2-3-Finish

Course R



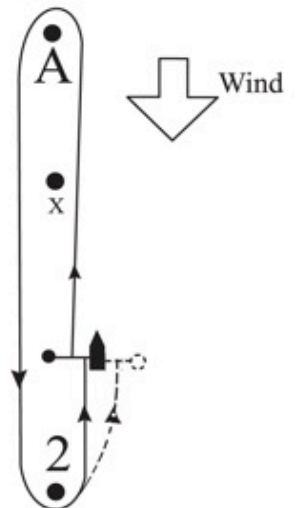
**R1**

start-X-1-2-finish.

**R2**

start-X-1-2-X-1-2-finish.

Course L



**L1**

start-A-2-finish.

**L2**

start-A-2-A-2-finish.

X may be passed to either port or starboard,  
it is not a mark of this course.