



# CHUBB U.S. JUNIOR CHAMPIONSHIPS

## SAILING INSTRUCTIONS AREA "D" Qualifier for

The US Sailing Chubb U.S. Junior Championships  
The U.S. Junior Triplehanded Sailing Championship for the Sears Cup  
The U.S. Junior Doublehanded Sailing Championship for the Bemis Trophy  
The U.S. Junior Singlehanded Sailing Championship for the Smythe Trophy  
Gulfport Yacht Club (GYC) Gulfport, MS - June 21, 22, 23, 2013

### 1 RULES

- 1.1 The regatta will be governed by the rules as defined in The Racing Rules of Sailing.
- 1.2 The following documents will apply:
  - a) US Sailing Regulations. <http://about.ussailing.org/Assets/Bylaws/US+SAILING+Regs08.pdf>
  - b) The Conditions for the United States Junior Sailing Championships.  
<http://championships.ussailing.org/Youth/ChubbJrChampionships/Conditions.htm>
  - c) The US Sailing Championship Support Vessel Policy.  
[http://championships.ussailing.org/Youth/Coaching\\_and\\_Support\\_Vessels.htm](http://championships.ussailing.org/Youth/Coaching_and_Support_Vessels.htm)
- 1.3 In case of conflict between the Notice of Race and the Sailing Instructions, the Sailing Instructions will prevail. This changes rule 63.7.

### 2 NOTICES TO COMPETITORS

- 2.1 Notices to Competitors will be posted on the official regatta notice board located on the lower deck.

### 3 CHANGES TO SAILING INSTRUCTIONS

- 3.1 Saturday, changes to the SIs will be posted no later than 20 minutes after the close of the morning briefing. Sunday, changes to the SIs will be posted no later than 45 minutes before the 1<sup>st</sup> Warning. Any change to the schedule of races will be posted no later than the end of the protest time limit on the day before it will take effect.

### 4 SIGNALS MADE ASHORE

- 4.1 Signals ashore will be displayed from the signal mast at Gulfport Yacht Club.
- 4.2 Boats are not allowed to launch before code flag D is displayed with one sound
- 4.3 When flag AP is displayed ashore, '1 minute' is replaced with 'not less than 45 minutes' in the race signal AP. Boats shall not leave the harbor; wait for further instructions. This changes rule Race Signals AP.

### 5 SIGNALS MADE AFLOAT

- 5.1 In accordance with RRS 90.2 (c), oral changes to the Sailing Instructions may be made on the water. A change is in effect when the RC signal boat displays code flag L over A with one sound signal. This means come within hail of the RC boat to receive the oral changes to the Sailing Instructions.

### 6 SAFETY AND PERSONAL EQUIPMENT

- 6.1 All competitors in US Sailing Championships, at all levels, shall wear, while on the water, other than brief periods while adding or removing clothing, an approved US Coast Guard Type III or Type V PFD that depends 100% on foam for flotation. The PFD must be worn outside of all clothing, except that a thin shirt may be worn over the PFD to prevent snagging.
- 6.2 Before the warning signal of the first race in which they intend to compete each day, boats shall check in by sailing on starboard tack near the stern of the race committee signal boat. Each boat shall hail her recall number until acknowledged by the signal boat. Failure to check in may result in a penalty.
- 6.3 A boat retiring from a race shall notify a RC vessel before leaving the course, or, when that is impossible, immediately after arrival ashore by cell phone to the Principal Race officer or Judges (See contacts below).
- 6.4 The only gear, rigging, or equipment that a team may take aboard a boat shall be: magnetic card compass, flags, plastic bucket or bailer, normally equipped ditty-bag, personal effects, including PFDs

and protective clothing. For the events using the C420, permission is granted to bring Fast-pins, and the competitors are required to bring their own trapeze harnesses.

- 6.5 Electronic fluxgate compasses and GPS devices of all varieties, styles and combinations are specifically banned.

## 7 SPECIAL SIGNALS

- 7.1 The display of code flag H at the finish of any race means: "Racing has ended for the day and competitors shall proceed directly to shore." This changes Race Signals.
- 7.2 For borrowed boats, the Breakdown Procedure of Appendix D5 shall be utilized. Appendix D5.2 is changed to substitute a yellow flag for signaling a breakdown on the boat.

## 8 SCHEDULE OF RACES

- 8.1 Friday June 21  
1200 - 1730 Registration Check-In Desk open  
1200 - 1300 borrowed boat orientation  
1300 - 1630 On-Water Clinic
- 8.2 Saturday June 22  
0800 - 0930 Breakfast / approved late Check-in  
0930 - 1030 Rig & launch boats  
1030 - 1045 Competitor's meeting at GYC lower deck  
1130 - First Warning for Sears, Bemis and Smythe to follow. Additional races to follow at the discretion of the Race Committee.  
After Racing - Dinner at GYC
- 8.3 Sunday June 23  
0800 - 0845 Breakfast  
1030 - First Warning for Sears, Bemis and Smythe to follow.  
1500 - No Warning signal will be made after this time on the last day of the regatta.  
After racing - Awards
- 8.4 There are a maximum of 10 races scheduled, except that the triplehanded division will attempt a full round robin.
- 8.5 The warning signal for succeeding races will be made as soon as possible.
- 8.6 To alert boats that a starting sequence will begin soon, the Race Committee will make multiple sound signals one minute before a warning signal is displayed.
- 8.7 Weather conditions, the need to protect borrowed boats and equipment, or the need to expedite the completion of the event may require procedures other than those mentioned in these Sailing Instructions. Any such special procedures must be approved by the Protest Committee.
- 8.8 **Shortened Event.** Should wind, weather or other conditions make it impossible to complete the scheduled number of races within the publicized time, the event shall be terminated and the results based on the completed number of races. Termination and decisions regarding results shall be made by the Protest Committee.

## 9 CLASS FLAG

- 9.1 The class flags will be:  
Smythe Singlehanded Division – Laser Radial - White  
Bemis Doublehanded Division – C420 - Green  
Sears Triplehanded Division – Flying Scot - Yellow

## 10 RACING AREA

- 10.1 The sailing area will be South East of the Gulfport Yacht Harbor. See chart in Attachment B

## 11 THE COURSE

- 11.1 The diagrams in Attachment C show the courses, including the course signals, the order in which marks are to be passed, and the side on each mark is to be left
- 11.2 No later than the warning signal, the race committee signal boat will display the course designation and the approximate compass bearing of the first leg.

## 12 MARKS

- 12.1 Rounding marks will be orange tetrahedrons.
- 12.2 New marks will be yellow tetrahedrons.

12.3 Start and Finish line buoy will be an orange sphere.

### 13 THE START

13.1 Races will be started using rule 26 with the warning signal made 5 minutes before the starting signal.

13.2 The starting line will be between a staff displaying an orange flag on the race committee signal boat and the course side of the mark at the port end of the line. ]

13.3 A boat starting later than 4 minutes after her starting signal will be scored DNS. This changes rules 63.1 and A5.

### 14 RECALLS

14.1 The RC will attempt to hail the recall numbers of OCS boats after the starting signal. This changes rule 29.1

14.2 The failure of any boat to hear the hail, promptness of the hail, failure to hail any boats, or the order of boats hailed shall not be grounds for redress. This changes rule 62.1.

### 15 CHANGE THE NEXT LEG OF THE COURSE

15.1 To change the next leg of the course, the committee will lay a new mark (or move the finishing line) and remove the old marks as soon as practicable.

### 16 THE FINISH

16.1 [The finishing line will be between a staff displaying an orange flag on a RC boat and the course side of the designated finish mark. ]

### 17 PENALTY SYSTEM

17.1 Appendix P – Special Procedures for Rule 42 will NOT apply.

### 18 TIME LIMIT

18.1 The time limit for each race will be 90 minutes for the first boat to finish.

18.2 Boats failing to finish within 15 minutes after the first boat that sails the course in accordance with RRS 28.1 and finishes will be scored TLE (Time Limit Expired) without a hearing. These boats that did not finish within this finishing window will be assigned points equal to two plus the number of finishers in that race that did finish within the finishing window in accordance with rule 28.1. This changes rules 35, 63.1, A4 and A5.

### 19 EVENT PROTESTS AND REQUESTS FOR REDRESS

19.1 A boat is not permitted to protest another boat for breaking sailing instructions 4.2, 4.3, 6.2, 6.3, 22, or 23. The penalty for breaking these instructions may be less than disqualification at the discretion of the protest committee. This changes rule 60.1(a).

19.2 A boat intending to protest about an incident that occurs in the racing area shall notify the Race Committee finish boat of her intention as soon as possible after finishing, identifying the boat(s) being protested. This changes rule 61.1(a)

19.3 Protests forms will be available at and returned to the protest box located near the official notice board.

19.4 The protest time limit is 60 minutes after the RC boat docks.

19.5 A protest hearing schedule and the location of the hearings will be posted on the official notice board no later than 15 minutes following the end of protest time.

19.6 Notice of actions taken by the race committee or protest committee will be posted on the official notice board.

19.7 On the last day of the regatta a request for reopening a hearing shall be delivered:

a) within the protest time limit if the party requesting reopening was informed of the decision on the previous day.

b) within the protest time limit, or 30 minutes after the decision is announced, whichever is later. This changes rules 62.2 and 66.

### 20 US SAILING REQUIREMENTS FOR AN AREA ELIMINATION REOPENING

20.1 Under rule 70.5(a), there shall be no appeal of the decision of a protest or request for redress. However, a decision following a hearing under rule 69.1(a) may be appealed. E-mail and phone contact information for each boat entered and for the chairmen of the protest committee and the race committee shall be posted on the official notice board at all times during the event.

20.2 Rule 65.2 is changed as follows: **65.2** A party to the hearing is entitled to receive the above information in writing, provided she asks for it in writing and hand-delivers her request to a member of

the protest committee no later than the protest time limit on the last day of racing or one hour after being informed of the decision, whichever is later. The committee shall then, within two hours, hand-deliver the information to the *party*, including when relevant, a diagram of the incident prepared or endorsed by the committee.

20.3 Rule 66 is changed as follows:

- a) 66 REOPENING A HEARING **66.1** A hearing may be reopened when the protest committee decides that it may have made a significant error, or when significant new evidence becomes available within a reasonable time.
- b) **66.2** The protest committee may reopen the hearing. A *party* to the hearing may ask for a reopening no later than one hour after being informed of the decision. When a hearing is reopened under rule 66.2, a majority of the members of the protest committee shall, if possible, be members of the original protest committee.
- c) **66.3 Area Elimination Reopening**

- 20.4 A *party* to a hearing of a *protest* or request for redress may request an Area Elimination Reopening. The request shall be in writing and include the significant error that the *party* believes the protest committee made or the nature of the significant new evidence that is available. The request shall be made no later than 24 hours after the hearing or 24 hours after the protest time limit on the last day of racing, whichever is later. The request, along with copies of the original *protest* or request for redress, the facts found, the decision of the protest committee, any new evidence that cannot be presented verbally, and e-mail and phone contact information for all *parties* to the hearing as well as the chairman of the protest committee, shall be sent by e-mail to the US Sailing Championships Director, [LizWalker@ussailing.org](mailto:LizWalker@ussailing.org) and the US Sailing Championships Chairman, [svmadero@aol.com](mailto:svmadero@aol.com)
- 20.5 The protest committee for an Area Elimination Reopening shall consist of the chairman of the original protest committee plus four certified judges appointed by US Sailing. A majority of the committee's members shall be Senior or International Judges. US Sailing will appoint its chairman.
- 20.6 An Area Elimination Reopening will be conducted by telephone conference call. The time and date for the conference call shall be established by the chairman as soon as practicably possible and no later than seven days after the request for reopening is e-mailed. The chairman will e-mail to the *parties* to the hearing the request for reopening, the facts found, the decision of the protest committee, the time and date of the hearing, the process for joining the call and any other relevant documents.

## 21 SCORING

- 21.1 The Low Point System of Appendix A will apply.
- 21.2 Three (3) races are required to be completed to constitute a series.
- 21.3 When fewer than five (5) races have been completed, a boat's series score will be the total of her race scores.
- 21.4 When five (5) or more races have been completed, a boat's series score will be the total of her race scores excluding her worst score. This changes rule A2.

## 22 REPLACEMENT OF EQUIPMENT

- 22.1 Substitution or repair or replacement of hulls, sails, or equipment will not be allowed without prior written approval of the protest committee.

## 23 COACHING AND OUTSIDE CONTACT

- 23.1 This is a Grade 2 Event as defined in the US Sailing Championship Support Vessel Policy. See [http://championships.ussailing.org/Youth/Coaching\\_and\\_Support\\_Vessels.htm](http://championships.ussailing.org/Youth/Coaching_and_Support_Vessels.htm)
- 23.2 Except as provided in the Policy specified above, instructors, coaches and other support personnel and family members shall not go afloat in the defined racing area at any time during the clinic or racing days, except in spectator boats supplied by the regatta organizers.
- 23.3 Outside contact with competitors is prohibited on clinic and racing days commencing with the competitor's arrival at the host club and shall continue until dismissed by the Coach on clinic days, or released by the Protest Committee on racing days.
- 23.4 Outside contact is defined as a parent, family member, spectator, or coach. Competitors shall not receive advice, instruction, or any type of outside assistance (other than that provided by US Sailing) including electronic communication devices while at the sailing venue during the clinic and racing days. It is the intent of this rule to prohibit contact between competitors and any person, who, in the opinion of the Protest Committee, is a coach, instructor or advisor.

- 23.5 The coaches provided by US Sailing will offer individual on-the-water instruction and group commentary/advice on land following each racing day. This coaching will be given to all competitors on an as equal basis as possible.
- 23.6 The Protest Committee may protest and disqualify a competitor for breaking the rules of this sailing instruction from all races on the day of the infringement.

## 24 DISCIPLINE

- 24.1 For Junior and Youth events or for junior or youth competitors in any US Sailing championship, no participant or competitor shall use, either on or off the water: marijuana or any other controlled substance (as defined in 21 U.S. Code 802) the possession of which is unlawful under 21 U.S. Code 841, or alcoholic beverages (distilled spirits, wine and beer, each described in chapter 51 of the U.S. Internal Revenue Code and intended for beverage use).
- 24.2 An alleged breach of 24.1 will not be grounds for a protest. However, when the protest committee believes that a competitor may have breached one of these regulations, it shall follow the process described in racing rule 69.1, and a competitor found to have breached one of these regulations shall be excluded from the remaining races of the series and, where practicable, be removed from the regatta venue and sent home. The competitor's boat will be disqualified from all races of the series

## 25 PRIZES

- 25.1 The top scoring team in the Triplehanded and the top two (2) scoring teams in the Doublehanded and Singlehanded divisions will qualify for the National Finals. Go to <http://championships.ussailing.org/Youth/ChubbJrChampionships.htm> for registration information.
- 25.2 Awards will be given to the top three competitors in each division

## 26 FURTHER INFORMATION

- 26.1 For further information please contact:
- 26.2 US Junior Sailing Championship Committee Area "D" representative, Samson Vasquez (228) 323-1336 sam@gulfportyachtclub.org
- 26.3 Junior Sailing Championships Committee Chair is Frank Ustach – (617)962-9223, frank.ustach@gmail.com 3522 N Paulina St, Apt 2. Chicago, IL, 60657
- 26.4 Host Club Event Chair is Samson Vasquez (228) 323-1336 sam@gulfportyachtclub.org
- 26.5 Principal Race Officer is George Hero (504) 427-5856 GHero@BellSouth.net
- 26.6 Judge is Karen Reisch (504) 452-5748
- 26.7 Event Chair is Cissy Yoes; cyoes@UTMB.EDU.

## 27 MISCELLANEOUS

- 27.1 The Race Committee will operate on and monitor VHF Channel 68 with Channel 72 as an alternate.

## Attachment A - Borrowed Boats

This Attachment to the Sailing Instructions will apply if boats are supplied to the competitors for this event.

### **A1 BOATS**

A1.1 Boats will be provided for all competitors, who shall not modify them or cause them to be modified in any way except that

- (a) a compass may be tied or taped to the hull or spars;
- (b) wind indicators, including yarn or thread, may be tied or taped anywhere on the boat;
- (c) hulls, centreboards and rudders may be cleaned, but only with water;
- (d) adhesive tape may be used anywhere above the water line; and
- (e) all fittings or equipment designed to be adjusted may be adjusted, provided the class rules are complied with.

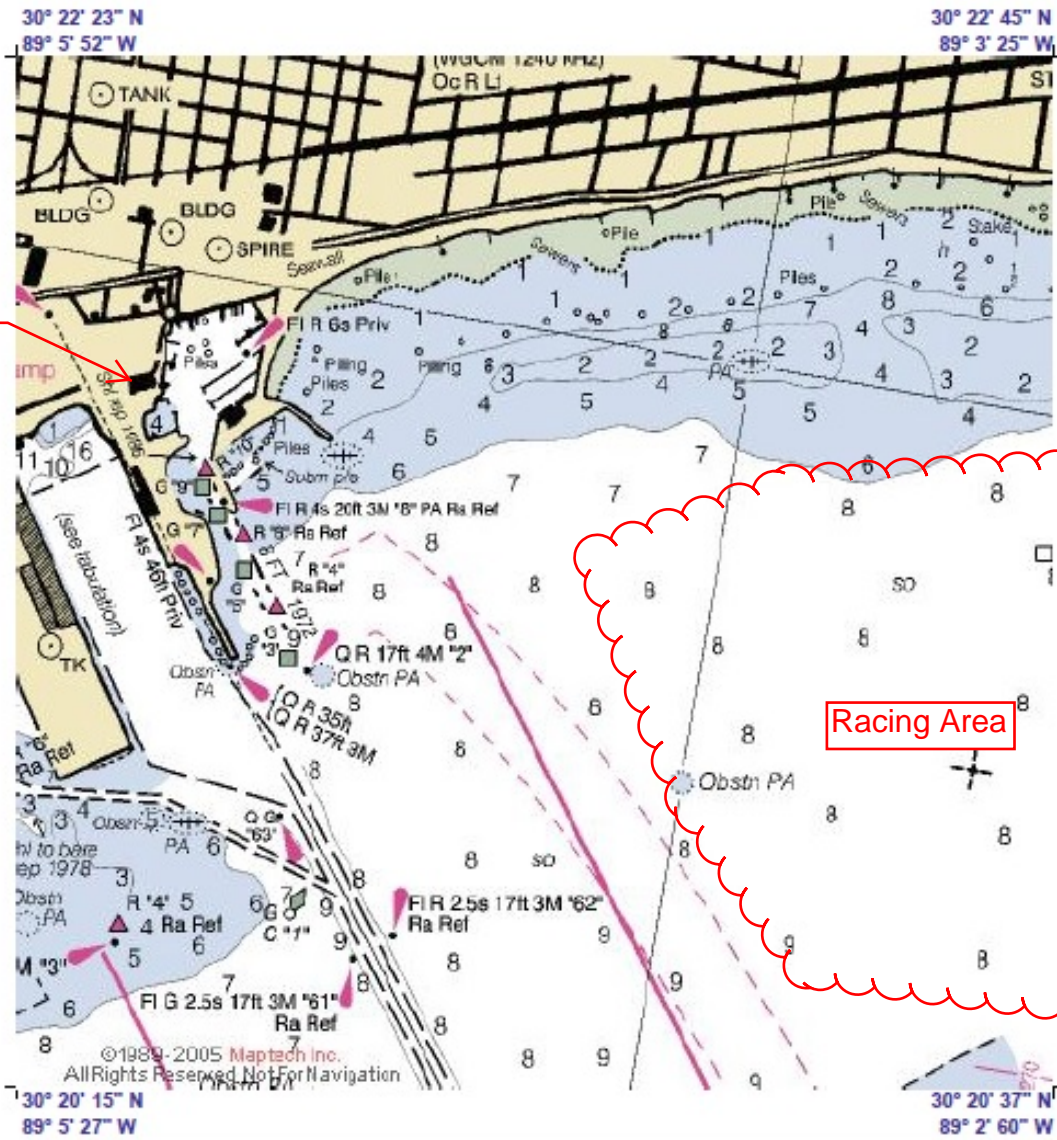
A1.2 All equipment provided with the boat for sailing purposes shall be in the boat while afloat.

A1.3 The penalty for not complying with one of the above instructions will be disqualification from all races sailed in which the instruction was broken.

A1.4 Competitors shall report any damage or loss of equipment, however slight, to the organizing authority's representative immediately after securing the boat ashore. The penalty for breaking this instruction, unless the [protest committee] is satisfied that the competitor made a determined effort to comply, will be disqualification from the race most recently sailed. |

Attachment "B" Venue

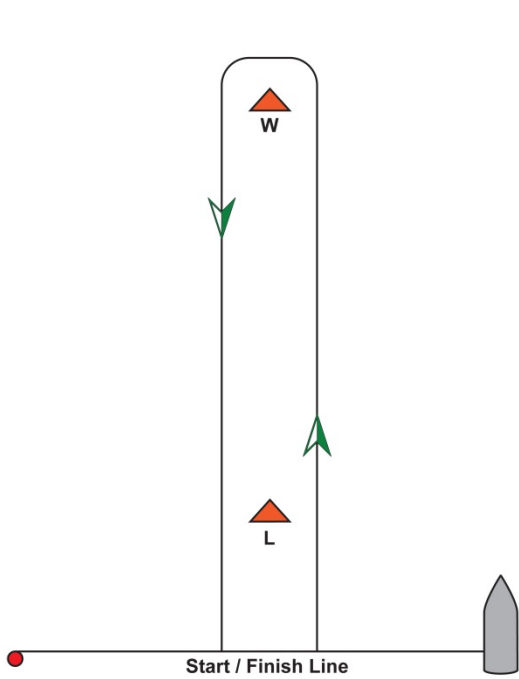
Gulfport Yacht Club



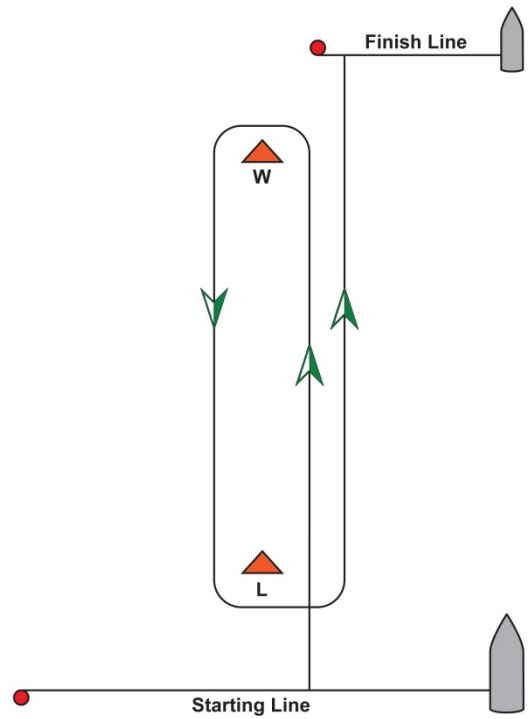
# Attachment C – Courses

“W#” indicates a Windward-Leeward Course and the number of laps

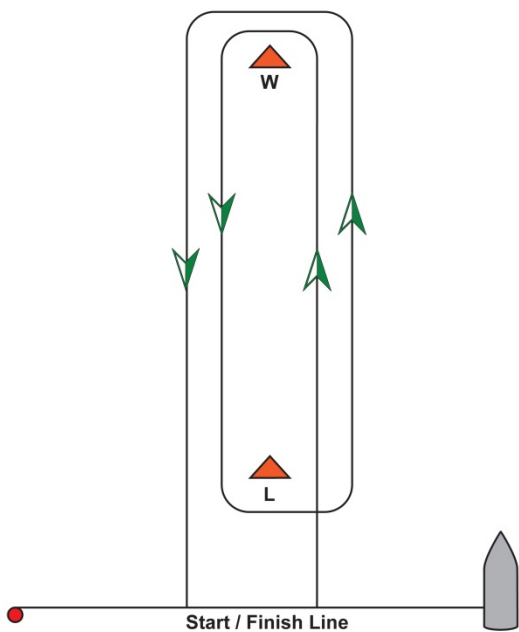
Course “W1” Start-W-Finish



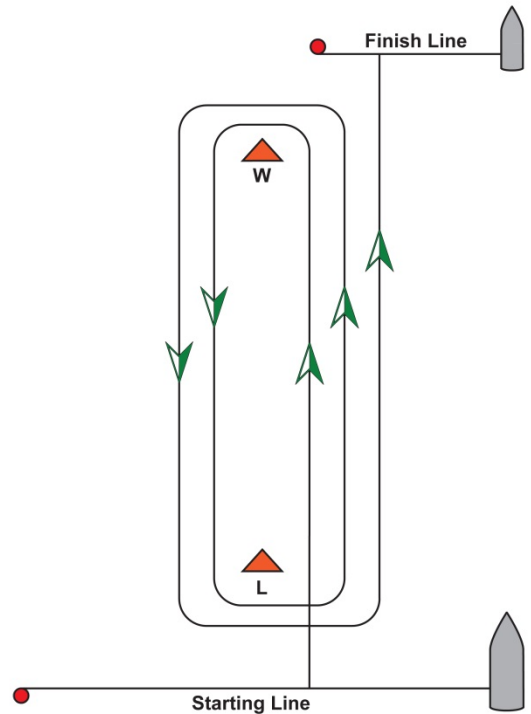
Course “W1.5” Start-W-L-Finish



Course “W2” Start-W-L-W-Finish



Course “W2.5” Start-W-L-W-L-Finish



Marks not used as rounding marks, are not marks of the leg and may be left to port or starboard. For example, on course “W2”, on the last leg, Mark “L” may be left to port or starboard.