



2013 Tasar World Championship

Hosted by Columbia Gorge Racing Association in cooperation with the North American Tasar Association

August 10-17, 2013
Cascade Locks, Oregon

Notice of Race

1. Rules

- 1.1. The regatta will be governed by the rules as defined by *The Racing Rules of Sailing* and the rules of the World Tasar Class Association (www.tasar.org). The following US Sailing prescriptions will apply: Appendix R and the prescriptions to rules 67, 70.5(a) and 76.1. No other US Sailing prescriptions will apply
- 1.2. All competitors shall wear a life jacket or other adequate personal flotation device at all times while on the water other than brief periods while adding or removing clothing. This changes Rule 40.
- 1.3. All applicable rule changes will appear in full in the Sailing Instructions. The Sailing Instructions may also change other racing rules.
- 1.4. The organizing authority is the Columbia Gorge Racing Association.

2. Advertising & Bow Numbers

- 2.1. Advertising shall be in accordance with ISAF Regulation 20, Advertising Code
- 2.2. Boats may be required to display advertising and bow numbers supplied by the organizing authority.

3. Eligibility & Entry

- 3.1. The regatta is open to all boats of the Tasar class.
- 3.2. Competitors must be members in good standing of their regional Tasar Class Association. Competitors who wish to become members of their regional TCA may join by completing their registration and making payment prior to the close of registration for the regatta.
- 3.3. Eligible competitors may enter by completing the online registration form and fee payment found on the Columbia Gorge Racing Association website www.cgra.org.
- 3.4. Competitors will be required to agree to a waiver of liability as a condition of eligibility. This waiver may be completed either during online registration or at the event check-in.
- 3.5. All competitors are required to check in at the race office prior to 0900 Sunday August 11.

4. Classification

- 4.1. This event is open to sailors of all classifications as described in the ISAF Regulation 22, ISAF Sailor Classification Code.

5. Entry Fees

- 5.1. The entry fee is \$500USD for entries completed with payment on or before June 1, 2013.
- 5.2. An entry fee of \$600USD will be charged for entries completed or paid after June 1, 2013.
- 5.3. Entries will not be accepted after 1200 on August 11, 2013.
- 5.4. Members of US Sailing or an equivalent national sailing authority are eligible for a discount of \$5.00.
- 5.5. CGRA Members are eligible for an additional discount of \$5.00.
- 5.6. Entry fees include moorage, regatta souvenir, post-racing refreshments, and admission to the scheduled social events.

6. Schedule of Events

Saturday, August 10	1000-1800	Arrivals/Check-in/Measurement
Sunday, August 11	0900-1600 1300 1800	Arrivals/Check-in/Measurement Practice Race Welcome Reception & BBQ
Monday, August 12	1030 1200	Competitors Meeting First Race Warning
Tuesday, August 13	1200 1800	First Race Warning Tasar World Council Meeting
Wednesday, August 14	1200 1800	First Race Warning Sternwheeler Dinner Cruise
Thursday, August 15 Reserve Day – racing if required to maintain schedule	1200	First Race Warning – if required
Friday, August 16	1200	First Race Warning
Saturday, August 17	1100 1400 1800	First Race Warning No warning signal will be made after 1400 Awards Presentation– Skamania Lodge
Sunday, August 18		Departures – container loading

6.1. A maximum of 3 races may be sailed each day. A maximum of 14 races are scheduled for the series.

7. Inspection & Measurement

- 7.1. All boats must comply with the Tasar Class Rules.
- 7.2. Boats may be inspected for safety equipment and measurement compliance at any time during the regatta.
- 7.3. It is the responsibility of each entrant to provide any supplementary weights necessary to ensure compliance with Tasar Class Rule C6. These must be presented at Measurement. The Race Committee may reject at its discretion any form of supplementary weight it considers unsuitable.
- 7.4. Random measurement and compliance checks may be made throughout the regatta at the discretion of the Race Committee.
- 7.5. For measurement breaches or protests the jury may impose discretionary penalties.

8. Sailing Instructions

- 8.1. The Sailing Instructions will be available during on-site check-in and prior to the event via the NATA and CGRA websites.

9. Venue

- 9.1. The Columbia River adjacent to Cascade Locks, Oregon (see Appendix A).

10. Courses

- 10.1. The courses will be prescribed in the Sailing Instructions and will include windward, leeward, and reaching legs.

11. Scoring

- 11.1. The Low-Point Scoring System will be used. However, if fewer than 6 races are completed, a boat's series score will be the total of her race scores; if from 6 to 11 races are completed, her series score will be the total of her race scores excluding her worst score; and if 12 or more races are completed, her series score will be the total of her race scores excluding her two worst scores.
- 11.2. A minimum of three races must be completed to constitute a regatta.
- 11.3. Decisions of the international jury will be final as provided in rule 70.5.

12. Berthing

12.1. All boats shall be kept at the Cascade Locks Marine Park.

13. Prizes

13.1. Prizes will be awarded to the top six positions overall.

13.2. Additional prizes will be awarded as follows:

13.2.1. Masters Champion (combined age 80 - 99 years)

13.2.2. Grand Masters Champion (combined age 100 - 119 years)

13.2.3. Super Grand Masters Champion (combined age 120+ years)

13.2.4. First Lady (highest placed woman (helm or crew)

13.2.5. First Junior Helm (helm under the age of 19 years)

13.2.6. All ages are calculated on the day of the first scheduled race.

13.3. Additional prizes may be awarded at the discretion of the organizing authority.

14. Safety

14.1. Boats shall not impede the passage of commercial vessels and shall comply with the [U.S. Inland Navigation Rules Act of 1980](#). Boats that fail to comply promptly with signals from a committee boat to alter course, or that receive a 5-blast warning (5 short sounds) from a commercial vessel, will be subject to protest and possible disqualification.

15. Risk, Disclaimer of Liability & Personal Conduct

15.1. Competitors participate in the regatta at their own risk. See Rule 4 (Decision to Race). The organizing authority will not accept any liability for material damage or personal injury or death sustained in conjunction with or prior to, during, or after the regatta.

15.2. The competitor will accept full responsibility for all his/her actions during any activity related to the event. This includes on-shore activities before, during, and after the regatta.

15.3. Competitors are expected to abide by the Marine Park Rules as stated in Appendix C.

16. Insurance

16.1. Each participating boat shall be insured with valid third party liability insurance with a minimum cover of \$500,000 per event or the equivalent. Competitors must be prepared to supply proof of insurance on request.

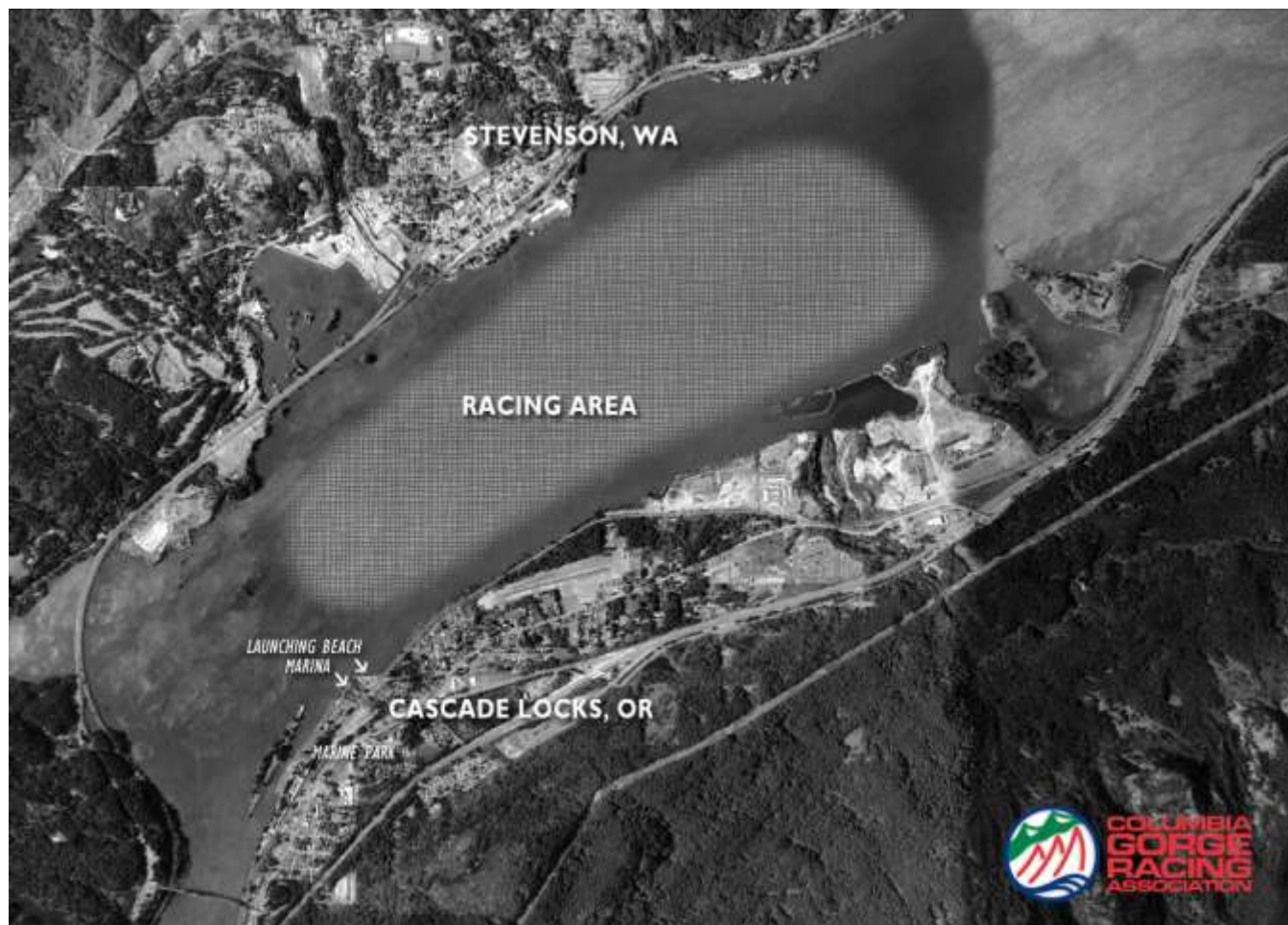
17. Right to Use Names & Likeness

17.1. By participating in the 2013 Tasar World Championship, a competitor automatically grants to the organizers and sponsors the right in perpetuity to make, use and show, from time to time at their discretion, any photographs, videos, or other reproductions of him or her during the period of the competition without compensation.

18. Additional Information

18.1. Additional useful information regarding accommodations, travel, boat charters and area recreation is available online at www.cgra.org and natasar.org/wp.

Appendix A: Racing Area

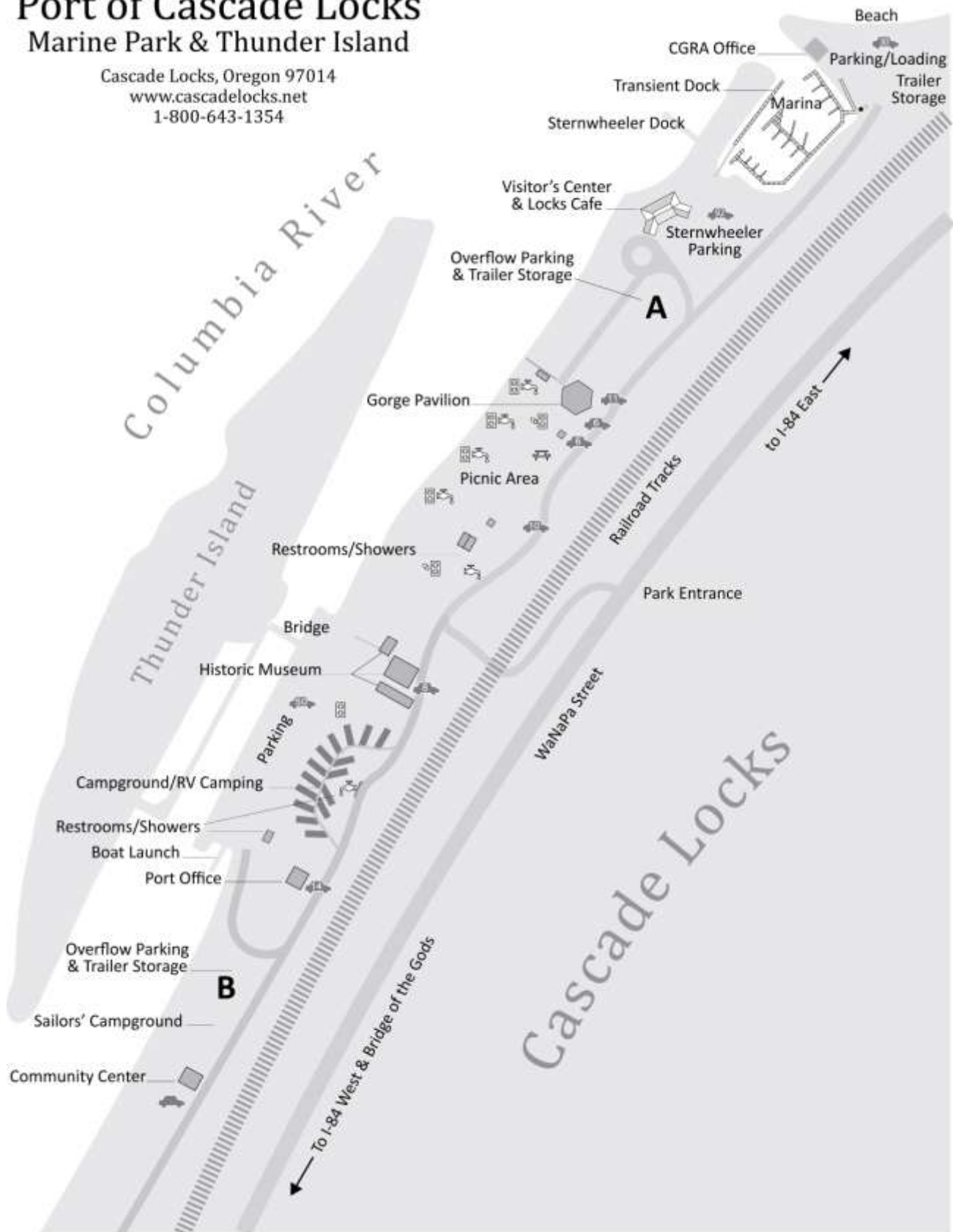


2013

Appendix B: Marine Park Map

Port of Cascade Locks Marine Park & Thunder Island

Cascade Locks, Oregon 97014
www.cascadelocks.net
1-800-643-1354



Appendix C: Marine Park Rules & Guidelines

Welcome to Cascade Locks Marine Park. This is a public facility that CGRA shares with other visitors, so please be courteous and respectful to other park and beach users. Also, please obey all posted signs and regulations. By following these guidelines you will help to ensure that we may continue to hold regattas at the Marine Park.

Parking

1. Park only in designated (striped) parking spots in the beach parking lot.
2. Do not park in spaces marked for marina patrons.
3. Do not park in the area marked for boat trailers.
4. Do not park in the parking lot adjacent to the Visitor Center. This is exclusively for use by patrons of the Sternwheeler Cruises.
5. Do not block aisles or access ways with cars, boats, trailers or gear.
6. RVs and campers are not allowed to park in the beach parking lot unless issued a special permit.
7. Parking is also available along the south side of the road leading to the beach.
8. Overflow parking will be available in either area A or B (see map) if beach parking lot is full. Please see the race management office or notice board.

Trailer Parking

1. Trailers must be parked in the designated area only.
2. Trailers may not be left in automobile parking spaces.
3. Overflow trailer parking will be available if trailer area is full. Please see the race management office or notice board.
4. Boats may be left in the moorage pen only with the permission of the CGRA facilities manager. See the regatta office for more information.

Camping

1. On most weekends camping is available at the Marine Park. Please check in with camp host to get a camping spot. Campground pricing is as follows:
 - Sites 1-12: \$25/night (hookups)
 - Sites 13-16: \$15/night (2 tents per site)
2. Reservations are accepted for campground only.
3. Overflow camping area is designated for sailing events only (no reservations). Fee: \$10/tent.
4. Camping must be in designated areas only. No camping in parking lots, beach area or pavilion.
5. No campfires are allowed.
6. Showers/restrooms are open to public. Restrooms are located in three areas:
 - Boat Launch area
 - Marine Park (middle)
 - Campground (with showers)
7. Payphone is available at the Visitor Center.
8. Trash receptacles are provided for garbage.

Miscellaneous

1. Please keep personal gear and boat equipment together, out of the way and safe at all times. CGRA and the Port of Cascade Locks are not responsible for lost or stolen items.
2. Pick up all trash.
3. Do not prop open the gate to the Marina.
4. Park hours: No person shall remain in the Port Marine Park between the hours of 10 pm- and ½ hour before sunrise unless the person is a camper in an authorized Port campsite.
5. Unauthorized vehicles, trailers, or boats left unattended are left at their own risk and may be subject to towing and/or a fine.