

Commodore's Regatta

Saturday April 6, 2013

Santa Cruz Yacht Club

Santa Cruz, California

Notice of Race

1. Rules

- 1.1. The regatta will be governed by the rules as defined in *The Racing Rules of Sailing*.
- 1.2. Racing rule 40 will be changed to require competitors wear a personal flotation device while racing.

2. Eligibility and Entry

- 2.1. The regatta is open to all boats holding a valid 2013 Monterey Bay PHRF rating.
- 2.2. Based upon their PHRF rating, sails used while racing and number of crew, boats may enter one of the following Divisions:
 - A Fleet** (PHRF <90)
 - B Fleet** (PHRF >89)
 - Double Handed**
(A minimum of two crew between 10 and 70 years old, unlimited crew younger than 10 or older than 70)
 - Jim and Main** (PHRF <182)
 - Jim and Main** (PHRF >181)
- 2.3. Eligible boats may only enter on-line at SCYC.org before 1200 hours, April 6, 2013.

3. Fees

- 3.1. The regular entry fee is \$50. For all entries received after **April 4** the late entry fee of \$75 will apply.

4. Schedule

- 4.1. There will be a competitor's briefing **April 6, 2013 at 1100 hours** at the SCYC Clubhouse.
- 4.2. One race is scheduled.
- 4.3. The scheduled time of the warning signal is **1255 hours**.
- 4.4. An awards ceremony will be held at the SCYC Clubhouse following racing.

5. Measurement

- 5.1. All boats shall produce a 2013 Monterey Bay PHRF certificate or have one on file with the Monterey Bay PHRF committee.

6. Sailing Instructions

- 6.1. The Sailing Instructions will be available by **1100 on April 1, 2013** on-line and at the competitor's briefing.

7. Venue

- 7.1. Racing will be around inflatable buoys set between Capitola and Natural Bridges.
- 7.2. The starting area will be within 1.5 miles of Walton Lighthouse.

8. Course

8.1. The diagram in **Attachment A** below shows the course and relative position of the marks. The course length used in the PHRF handicap calculation will be nine (9) nautical miles. The race will be a **pursuit race** with boats starting at a time determined by their handicap from the largest handicap starting first to the smallest. The start time of each boat will be available at the Competitor's briefing.

9. Prizes

9.1. Prizes will be awarded to each Division for first place and additional places based upon the number of entries at the discretion of the organizing authority.

10. Disclaimer of Liability

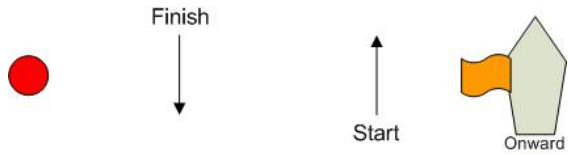
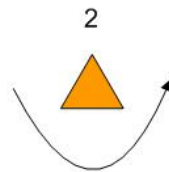
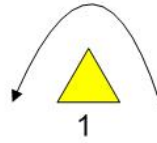
10.1. Sailing is an activity that has an inherent risk of damage and injury. Competitors in this event are participating entirely at their own risk. See RRS 4, Decision to Race.

10.2. The race organizers (organizing authority, race committee, protest committee, host club, sponsors, or any other organization or official) will not be responsible for damage to any boat or other property or the injury to any competitor, including death, sustained as a result of participation in this event. By participating in this event, each competitor agrees to release the race organizers from any and all liability associated with such competitor's participation in this event to the fullest extent permitted by law.

11. Further Information

11.1. For further information contact regatta@scyc.org

Attachment A



Course
Start – 1p – 2p – 1p – 2p – 1p - Finish