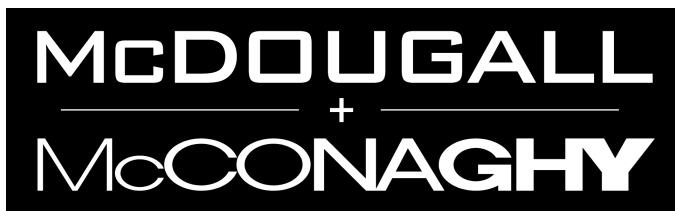




SAILING INSTRUCTIONS



International Moth 2013 US National Championship

October 9-11, 2013

Organizing Authority



Hosted By
Kaneohe Yacht Club
Hawaii

Sailing Instructions

1 Rules

- 1.1 The regatta will be governed by the rules as defined in *The Racing Rules of Sailing* and including the class rules of the International Moth class.
- 1.2 No national prescriptions will apply.
- 1.3 Rule 64.1(a) is changed such that the jury may impose penalties other than DSQ.
- 1.4 For the purposes of rule 64.3(b), “authority” will be the IMCA Executive Committee and IMCA chief measurer.

2 Notices to Competitors

- 2.1 Notices to competitors will be posted on the official regatta notice board and the event’s facebook page, <http://www.facebook.com/mothworlds>

3 Schedule of Races

- 3.1 Registration will take place between 1200 Hours (Noon) and 1600 Hours
- 3.2 Opening event will begin at 1800 Hours
- 3.3 The dates of racing (and non-points related events) are as follows. This modifies the Notice of Race. The first signal each day shall be at 12:00 p.m. unless a different time is posted pursuant to Sailing Instruction 2.

Wednesday, October 9	Registration & Measurement & Opening Event
Thursday, October 10	US National Racing
Friday, October 11	US National Racing

4 Signals Made Ashore

- 4.1 Signals made ashore will be displayed on the Kaneohe Yacht Club flagpole.

- 4.2 When the flag AP is displayed shore, “1 minute” is replaced with “not less than 30 minutes” in the race signal AP.

5 Personal Floatation

- 5.1 Personal flotation devices shall be worn at all times while racing, apart from brief period while changing clothing. This changes the preamble of Part 4 and rule 40.

6 Format of Racing

- 6.1 The series will consist of at least three and no more than nine races.
- 6.2 When fewer than five races have been completed, a boat’s series score will be the total of her race scores.
- 6.3 When five races have been completed, a boat’s series score will be the total of her race scores excluding her worst score.
- 6.4 When seven or more races have been completed, a boat’s series score will be the total of her race scores excluding her worst two scores.
- 6.5 Three races are required to constitute a regatta.

7 Environmental Responsibilities

- 7.1 Competitors shall not carry or use single-use disposable water bottles while afloat. The jury may impose a penalty less than disqualification for violations of this rule, but repeated violations shall be subject to a penalty of disqualification. Floating water bottle refilling stations will be provided.

8 Class Flags

- 8.1 The Class Flag will be a large yellow flag.

9 Racing Area and Obstructions

- 9.1 Races will be conducted in Kaneohe Bay. A diagram of the approximate racing area is included as *Appendix 1*.
- 9.2 A number of reef areas will be designated with white marks. The space between within these areas, including between the marks and the closest shore, constitutes an obstruction and boats shall not enter this area while

racing. The approximate position of the reef areas is designated in *Appendix 1*.

10 Courses

- 10.1 The following courses will be used: W2, W3. The courses are described in *Appendix 2*.
- 10.2 The course will be identified on a white board on the race committee boat.

11 Marks

- 11.1 Turning marks will be orange buoys.
- 11.2 Replacement marks will be orange buoys.
- 11.3 Starting and finishing marks will be orange buoys.

12 Start and Finish

- 12.1 The start and finish lines will be between the course side of a yellow or orange flag on the race committee boat and the course side of a mark on the port side of the committee boat.
- 12.2 Boats whose warning signal has not been made shall avoid the starting area during the starting sequence for other races.
- 12.3 A boat that does not start later than 5 minutes after its start will be scored as Did Not Start without a hearing. This changes rule A4.

13 Time Limit

- 13.1 Any boat not finishing within 15 minutes of the first boat shall be scored equal to the number of boats that finished the race plus one.

14 Penalties

- 14.1 Rule 44.1 is changed so that the Two-Turns Penalty is replaced by the One-Turn Penalty.

15 Protests and Requests for Redress

- 15.1 Protest forms will be available in the regatta office.
- 15.2 The protest time limit is 60 minutes after the last boat finishes the last race of the day or the race committee signals no more racing today, whichever is later.
- 15.3 Notices will be posted no later than 30 minutes after the protest time limit to inform competitors of hearings in which they are parties or witnesses. The notice will indicate the location of the hearing.
- 15.4 Decisions of the protest committee will be final pursuant to authority from ISAF and US SAILING.

16 Inspections

- 16.1 A boat or equipment may be inspected at any time for compliance with the class rules and sailing instructions. On the water, a boat can be instructed by a race committee equipment inspector or measurer to proceed immediately to a designated area for inspection.

17 Replacement of Crew

- 17.1 No replacement of sailors will be allowed.

18 Trash

- 18.1 All rules regarding disposal of trash will be strictly enforced.
- 18.2 All official boats, media boats, spectator boats, and support boats shall accept trash for disposal from competitors.

19 Event Advertising

- 19.1 Competitors shall display event advertising supplied by the organizing authority in the location and format prescribed.

20 Prizes

- 20.1 Prizes will be given to the top ten finishers, the top female finisher, the top junior (18 and under) finisher, and the winner of silver fleet, if applicable.

21 Disclaimer of Liability

- 21.1 Competitors participate in the regatta entirely at their own risk. See rule 4, Decision to Race. The organizing authority will not accept any liability for material

damage or personal injury or death sustained in conjunction with or prior to, during, or after the regatta.

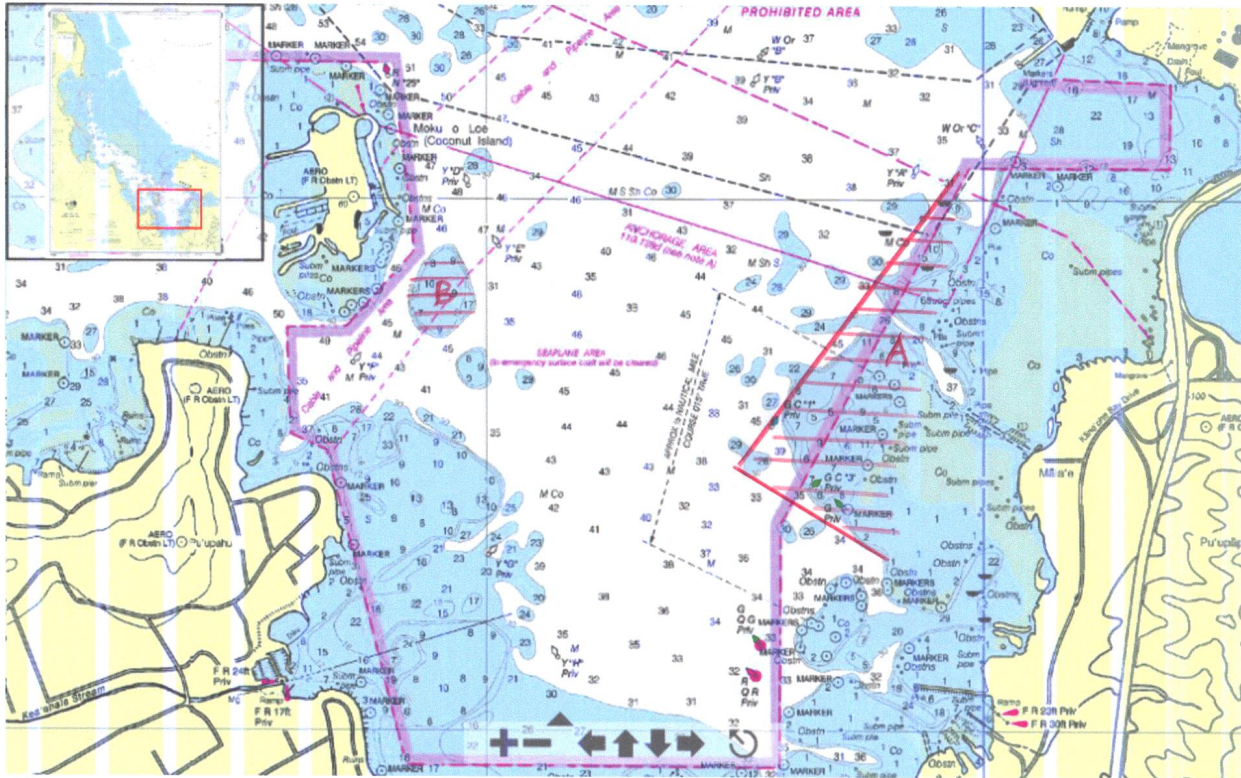
22 Further Information

For further information please contact:

Matthew Knowles, *US Class President* matthewknowles@gmail.com

Appendix 1 Chart of Approximate Race Area

Chart 19359



Above is a chart of the approximate race area.

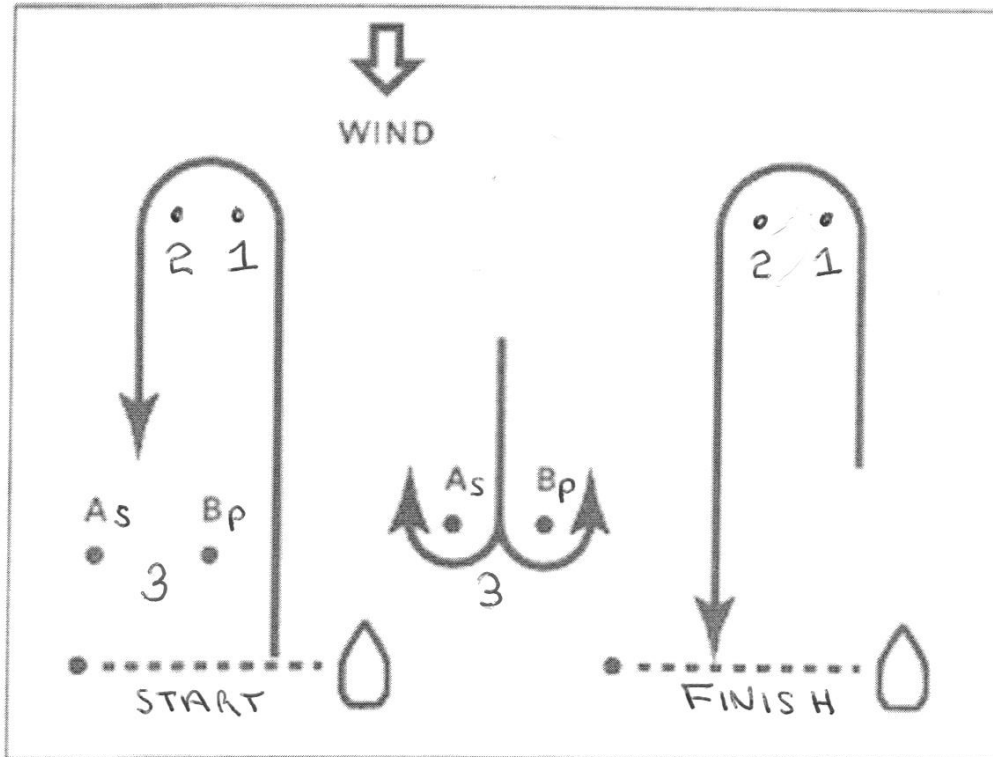
Please note **Zone A** in red stripes. This is an 'extremely shallow' reef area and is designated as an obstruction. It will be marked by yellow, orange or gray floats on the water.

Please note **Zone B** is in red stripes. This is a 'shallow' reef area and is designated as an obstruction. It will be marked by yellow, orange or gray floats on the water.

The yellow, orange or gray floats will be placed onto the **Zone A** and **Zone B** areas before the practice race.

Appendix 2
Windward-Leeward Courses
(W2, W3)

Windward/Leeward w/ Gate



Signal	Mark Rounding Order
W2 (2 Laps)	Start-1-2-3s/3p-1-2-Finish
W3 (3 Laps)	Start-1-2-3s/3p-1-2-3s/3p-1-2-Finish

Notes:

- 1 Mark 2 will be set approximately 100M to port of Mark 1.
- 2 When a leeward gate is set (Marks 3s/3p), boats shall pass between the two gate marks from the direction of Mark 2 leaving 4p to port and 4s to starboard.
- 3 A single leeward mark (Mark 3) may be laid in lieu of the gate. If so laid, boats shall leave Mark 3 to port.