



Cherry Pie Regatta 2014

Sarasota Bay Yachting Association (WFPHRF) Boat of the Year

February 8, 2014

Sailing Instructions

1 RULES

The regatta will be governed by the *rules* as defined in *The Racing Rules of Sailing*. If there is a conflict between the NOR and the Sailing Instructions, the Sailing Instructions will take precedence.

2 NOTICES TO COMPETITORS

Notices to competitors will be posted on the official notice board located on the pavilion on the north side of the club.

3 CHANGES TO SAILING INSTRUCTIONS

Any change to the sailing instructions will be posted before 0900 on the day it will take effect, except that any change to the schedule of races will be posted by 1900 on the day before it will take effect.

4 SIGNALS MADE ASHORE

- 4.1 Signals made ashore will be displayed from the flagpole in front of the clubhouse.
- 4.2 When flag AP is displayed ashore, '1 minute' is replaced by 'not less than 60 minutes' in the race signal. This changes Race Signal AP.

5 SCHEDULE

Day	Time	
Sat	0900	Registration Opens
	1100	Registration Closes
	1130	Skipper's Meeting
	1255	Warning Signal – 1 st Race
		Awards ASAP after racing

6 CLASS FLAGS

The class flags are described in Attachment I.

7 RACING AREA

The racing area is shown in Attachment I.

8 THE COURSES

- 8.1 The diagrams in Attachment II show the courses, including the approximate angles between legs and the order in which marks are to be passed and the side on which the mark is to be left.
- 8.2 The course to be sailed will be displayed on a white board on the starboard side of the race committee signal boat as early as possible, but no later than the warning signal for each divisions' starting sequence.

9 MARKS

Marks are described in Attachment I.

10 THE START

- 10.1 Races will be started using Rule 26.
- 10.2 The starting line will be between a staff displaying an orange flag on the race committee signal boat at the starboard end and the course side of the port end starting mark.
- 10.3 Boats whose warning signal has not been made shall avoid the starting area during the starting sequence for other races.

11. CHANGE OF THE NEXT LEG OF THE COURSE

To change the next leg of the course, the race committee will lay a new mark (or move the finishing line) and remove the original mark as soon as practicable. When a subsequent change is made, the new mark will be replaced by the original mark.

12 THE FINISH

- 12.1 The finishing line will be between a staff displaying an orange flag on the race committee signal boat and the finishing mark.

13 PENALTY SYSTEM

- 13.1 Rule 44.1 is changed so that the Two-Turns Penalty is replaced by One-Turn Penalty.

14 TIME LIMIT

- 14.1 Boats failing to finish within 30 minutes after the first boat sails the course and finishes will be scored DNF without a hearing. This changes RRS 35, A4 and A5.

15 PROTESTS AND REQUESTS FOR REDRESS

- 15.1 Protest forms are available outside the Club Office. Protests, requests for redress and reopening shall be delivered there within 60 minutes after the race committee boat docks. The docking time will be posted on the Official Notice Board.
- 15.2 Notices will be posted no later than 30 minutes after the protest time limit to inform competitors of hearings in which they are parties or named as witnesses. Hearings will be held in the club office.
- 15.3 Notices of protests by the race committee or protest committee will be posted to inform boats under rule 61.1(b).

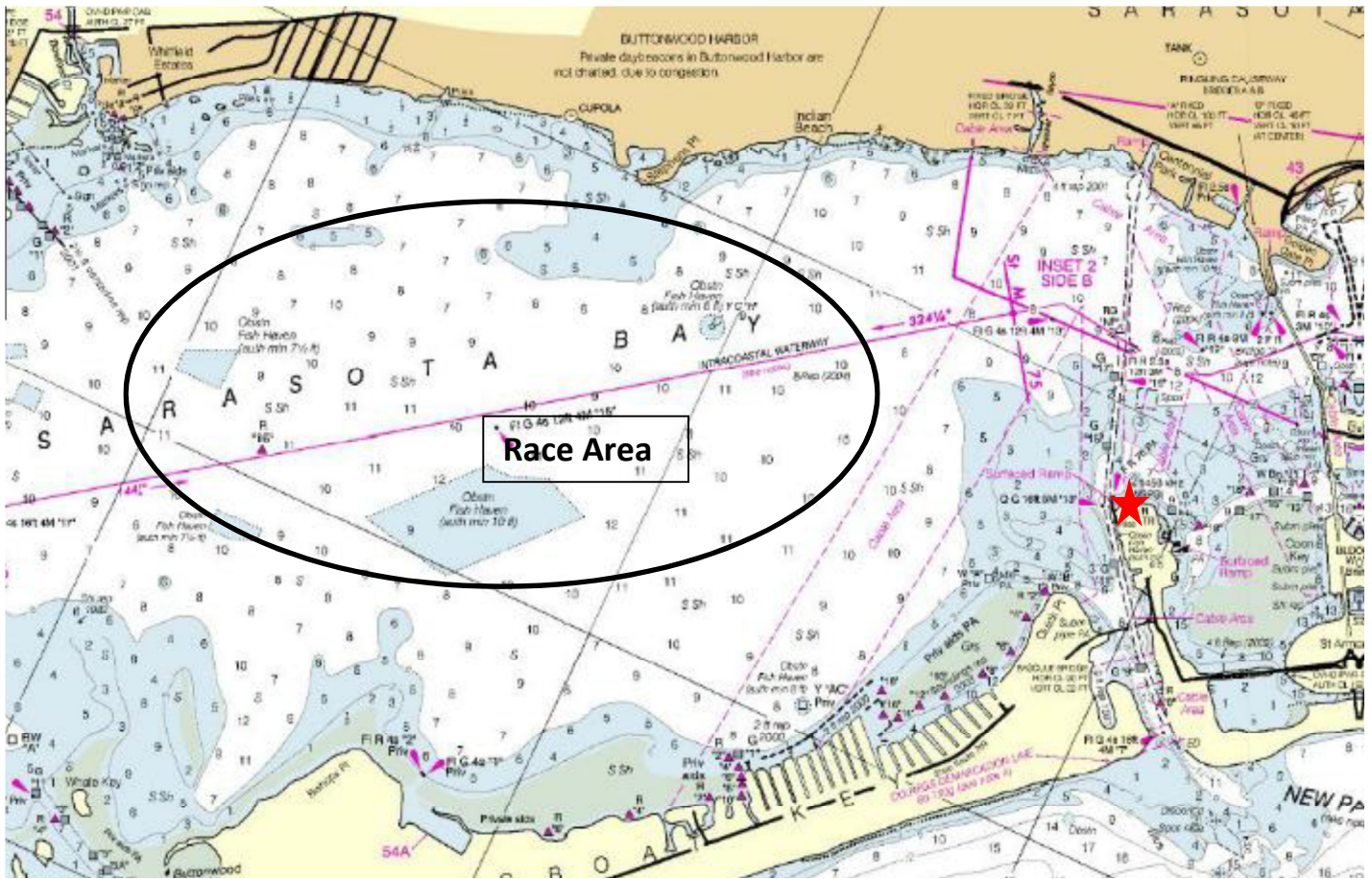
16 SCORING

- 16.1 One race is required to be completed to constitute a regatta.
- 16.2 Low Point System of Appendix A will be used except all races will count. This changes RRS A2.
- 16.3 WFPHRF Buoy rating will be used for the Spinnaker Division. Random Leg rating will be used for the Non Spinnaker Divisions. One Design classes will be scored separately. If no rating is available, the rating committee will assign a rating that cannot be appealed for the regatta.

17 DISCLAIMER OF LIABILITY

Competitors participate in the regatta entirely at their own risk. See RRS 4, Decision to Race. The organizing authority will not accept any liability for material damage or personal injury or death sustained in conjunction with or prior to, during, or after the regatta.

Attachment I – Sailing Areas, Mark Description, Class Flags



Course	VHF Channel	Mark Descriptions	Class Flags
Cherry Pie SBYA and One Design	72	Start and Finish Mark – SSS Bay Mark 'L' Course marks - Yellow tetrahedrons Change Mark – Green tetrahedron	Class flags will be described at the initial skipper's meeting and will be posted on the Official Notice Board by 0900h on February 8 th .



Cherry Pie Regatta 2014

Sarasota Bay Yachting Association (WFPHRF) Boat of the Year

February 8, 2014

Sailing Instructions

Attachment II

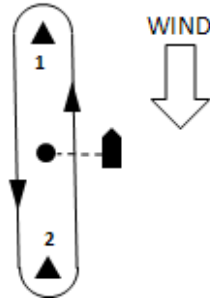
Course W

Course W1

Start, 1, 2, Finish

Course W2

Start, 1, 2, 1, 2, Finish



Spinnaker and One Design

Non Spinnaker (includes Racer Cruiser, Cruiser and Pocket Cruiser)

Will sail Fixed marks; Course to be posted on white board on Signal Boat