



2014 Verve Cup Regatta



CHICAGO YACHT CLUB

A Tradition of Yachting Excellence

Sailing Instructions – Distance Race

The Chicago Yacht Club

PRESENTS

THE 2014 VERVE DISTANCE RACE

SAILING INSTRUCTIONS

AUGUST 9, 2014

Commodore: Gerald F. Bober

Vice Commodore: Gregory Miarecki

Rear Commodore: Leif Sigmond

Chief Judge: Ted Jones

Race Committee Chair: Janet Baxter

Verve Cup Regatta Chairman

Martin Sandoval

Verve Cup Steering Committee

Robin Finlay – Vice Chair

Jessica Jamieson

Ted Jones

Karen Kinsey

Melissa Lumkes

Christopher McNicholas

Cindi Rudolph

Phil Rudolph

Martin Sandoval

Sam Veilleux

*Chicago Yacht Club and our sponsors encourage you to keep the waters
we sail in clean for future generations.*

Mark your calendars for the 2015 Verve Distance Race scheduled for August 8, 2015.

GENERAL INFORMATION

1. Verve Cup Regatta headquarters are located at Chicago Yacht Club, Monroe Station, (312) 861-7777, www.chicagoyachtclub.org, and will be open from 07:30 to 21:00 daily.
2. The legal drinking age in Illinois is 21. Minors will NOT be served and proof of age will be required. Intoxication or discourteous behavior may be grounds for expulsion from the event. **SKIPPERS AND OWNERS WILL BE HELD RESPONSIBLE FOR THE ACTIONS OF THEIR CREW. A BOAT IS SUBJECT TO IMMEDIATE DISQUALIFICATION IF ANY OF ITS UNDERAGE CREW IS FOUND TO BE ILLEGALLY CONSUMING ALCOHOL.**
3. Admission to ALL Verve Cup Regatta events will be open to all race participants and guests. **There are no social fees, tickets or other charges required to attend the onshore regatta events.**
4. Docking information: The following rules will be in force for the 2014 contestant yachts: No boat on the seawall or in a raft shall be left unattended for more than one hour. **Chicago Yacht Club dock attendants shall assign mooring arrangements. Please assist the Club attendants in their efforts.**
Any boat seeking dockage at the Chicago Yacht Club must allow rafting as prescribed by the Dock Master. NO EXCEPTIONS.
5. The Verve Cup Regatta is made possible through corporate sponsorships. In consideration of that commitment, the only signage permitted at the shore site will be that associated with the event sponsorship. This includes flags, banners, promotions, etc. **PLEASE NOTE: Any commercial or editorial reference to this event must use the regatta's copyrighted name.**

SCHEDULE OF EVENTS

Registration: Chicago Yacht Club, Monroe Station
Thursday, August 7, 2014
Between 12:00 hours and 19:00 hours

COMPETITOR'S MEETING:

18:30 hours at Monroe Station, Thursday, August 7, 2014

FIRST WARNING: Saturday, 9:25

**Verve Distance Race
Chicago Yacht Club
Monroe Harbor, Chicago, IL USA
August 9, 2014**

SAILING INSTRUCTIONS

1 RULES

- 1.1 The regatta will be governed by the rules as defined in *The Racing Rules of Sailing*.
- 1.2 The following US Sailing prescriptions will not apply: 60, 63.2, and 63.4.
- 1.3 Appendix T1 will apply. The first two sentences of rule 44.1 are changed to: “A boat may take a One-Turn Penalty when she may have broken one or more rules of Part 2 in an incident while racing or rule 31. However, when she may have broken one or more rules of Part 2 in an incident while in the zone around a mark other than a starting mark, her penalty shall be a Two-Turns Penalty.”
- 1.4 Appendices T2 and T5 will apply.
- 1.5 The Offshore Rating Rule will apply for handicap sections.

2 NOTICES TO COMPETITORS

Notices to competitors will be posted on the official notice boards located at the Chicago Yacht Club Monroe Station. Information may also be available on the Chicago Yacht Club website at www.chicagoyachtclub.org/verveoffshore.

3 CHANGES TO SAILING INSTRUCTIONS

Any change to the sailing instructions will be posted before 0800 on the day it will take effect, except that any change to the schedule of races will be posted by 2000 on the day before it will take effect.

4 SIGNALS MADE ASHORE

- 4.1 Signals made ashore will be displayed from the main flagpole located northeast of the center of the Monroe Station clubhouse.
- 4.2 When flag AP is displayed ashore, ‘1 minute’ is replaced with ‘not less than 75 minutes’ in the race signal AP.

5 SCHEDULE OF RACES

There will be one race on Saturday, August 9. The first warning will be at 0925.

6 CLASS FLAGS

Section breaks and initial starting order will be announced no later than registration.

7 STARTING AREA

The diagram contained in Addendum A provides the approximate starting location. The starting area is located approximately 5.1 nautical miles at a heading of 040° from the inner Monroe

Harbor entrance. The approximate coordinates are 41° 56' North and 87° 32' West.

8 THE COURSES

- 8.1 The diagrams in Addendum A show the courses, the order in which marks are to be passed, and the side on which each mark is to be left. If used, Mark 2 is a rounding mark due to the possibility of a course change at Mark 2 and boats shall come within hail in anticipation of a possible course change.
- 8.2 Race committee intends to assign a different course to each class based on estimated average boat speeds in each class and weather conditions of the day.
- 8.3 No later than the warning signal for each class, the race committee signal boat will display the course letter on a course board for the respective class.

9 MARKS

- 9.1 Marks 1 and 2 will be orange inflatable marks. All other marks will be government navigation aids.
- 9.2 The starting mark will be a green inflatable mark and the finishing mark will be an orange inflatable mark.

10 AREAS THAT ARE OBSTRUCTIONS

The following areas are designated as obstructions: areas restricted by the U.S. government. Refer to the most recent Local Notice To Mariners.

11 THE START

- 11.1 The starting line will be between a staff displaying an orange flag on the signal boat at the starboard end and the course side of the port-end starting mark.
- 11.2 Boats whose warning signal has not been made shall avoid the starting area during the starting sequence for other races. The starting area is defined as an area extending approximately 150 feet to windward and to leeward of the starting line and 150 feet to either end.
- 11.3 A boat starting later than eight minutes after her starting signal will be scored Did Not Start without a hearing. This changes rules A4 and A5.
- 11.4 If any part of a boat's hull, crew or equipment is on the course side of the starting line at her starting signal and she is identified, the race committee will attempt to broadcast her sail number on the designated hailing channel.
- 11.5 The race committee may combine sections for a start.

12 CHANGE OF THE NEXT LEG OF THE COURSE

A change of the next leg of the course is an option only at Mark 2 and only if Mark 2 is a mark for the designated course for a class. To signal a change of the next leg at Mark 2, race committee shall display code flag C and applicable class flag(s) at Mark 2. If change is signalled, the mark of the next leg shall be the finish line described in Section 13.

13 THE FINISH

The finish line will be between a staff displaying a blue flag on a race committee boat and the course side of the finishing mark to be left to port. The finish line will be oriented approximately

000 - 180 degrees and is to be crossed from east to west.

14 TIME LIMITS AND TARGET TIMES

The time limit will be 1630. If there is a postponement before the first warning signal, the time limit will be extended by the duration of that postponement, but not to exceed two hours.

15 PROTESTS AND REQUESTS FOR REDRESS

15.1 Protests and requests for redress or reopening shall be delivered to the protest desk at Monroe Station within the appropriate time limit.

15.2 A boat's protest time limit is 60 minutes from the docking time of the race committee boat that finished her.

16 SCORING

16.1 Boats entered under ORR will be scored using that rule. All other boats will be scored without handicap, except for the 8 Mile Buoy Trophy.

16.2 ORR scoring shall be in accordance with the ORR handicap certificate in effect on August 7. ORR scoring will be calculated using time-on-time (TOT) scoring utilizing the ORR offshore all purpose rating for classes on each designated course.

17 SAFETY REGULATIONS AND WITHDRAWALS

A boat that retires from the race shall notify the race committee as soon as practicable. A boat may notify the race committee using the designated VHF hailing channel.

18 ADVERTISING

Boats may be required to display advertising, including removable adhesive stickers, chosen and supplied by the organizing authority.

19 SUPPORT BOATS

Team leaders, coaches and other support personnel shall stay outside areas where boats are racing from the time of the preparatory signal for the first class to start until all boats have finished or retired or the race committee signals a postponement, general recall or abandonment.

20 RADIO COMMUNICATION

Except in an emergency, a boat shall neither make radio transmissions while racing nor receive radio communications not available to all boats. This restriction also applies to communication technologies.

21 COURTESY BROADCASTS

21.1 The courtesy VHF broadcast channel will be CH 78.

21.2 A boat shall not request redress for errors or omissions in courtesy broadcasts. This changes rule 62.1(a).

22 PRIZES

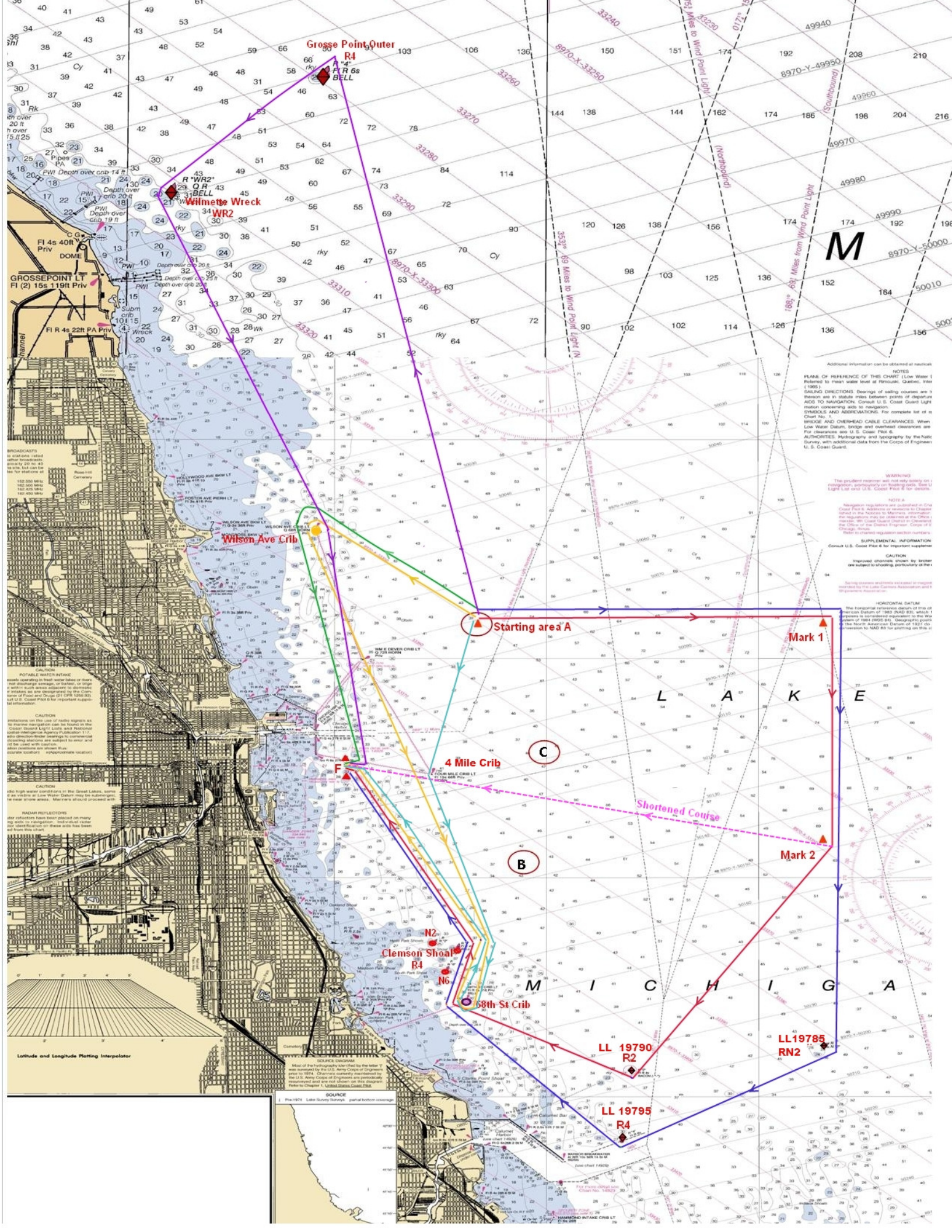
Prizes will be awarded as described in the NOR.

23 DISCLAIMER OF LIABILITY

Competitors participate in the regatta entirely at their own risk. See rule 4, Decision to Race. The organizing authority will not accept any liability for material damage or personal injury or death sustained in conjunction with or prior to, during, or after the regatta.

24 INSURANCE

Each participating boat shall be insured with valid third-party liability insurance with a minimum cover of \$300,000 per event or the equivalent.



Grosse Pointe Outer R4

Wilmette Wreck

Wilson Ave Crib

4 Mile Crib

Clemson Shoal

58th St Crib

Starting area A

Mark 1

Mark 2

L A K E

M I C H I G A

LL 19790 R2

LL 19785 RN2

LL 19795 R4

M

Additional information can be obtained at nearest...
 NOTES
 PLANE OF REFERENCE OF THIS CHART (Low Water) is referred to mean water level at Remond, Quebec, June 1985.
 SOUNDING DIRECTIONS: Bearings of sailing courses are a bearing set in statute miles between points of departure.
 AUTHORITY: Hydrography and topography by the Hydrographic Survey, with additional data from the Corps of Engineers, U.S. Coast Guard.

WARNING
 The prudent mariner will not rely solely on a compass, gyrocompass or heading from a Star Light List and U.S. Coast Guard # for details.

NOTE A
 Regulations regarding navigation are published in the U.S. Coast Guard's Navigation Rules, which are available at the Office of the District Engineer, Corps of Engineers, Vicksburg, Mississippi.

SUPPLEMENTAL INFORMATION
 Consult U.S. Coast Guard for important supplements.

CAUTION
 Improved soundings subject to change without notice. Particularity of the sounding system should be noted.

HORIZONTAL DATUM
 The horizontal datum is based on the mean spheroidal datum of 1983 (NAD 83), which is a datum of the North American Datum of 1983 (NAD 83). Geographic positions are given in terms of latitude and longitude as determined by the North American Datum of 1983 (NAD 83) for sounding on 1983.

POTABLE WATER INTAKE
 Facilities operating in fresh water lakes or rivers...
 CAUTION
 The high water level in the Great Lakes...
 RADAR REFLECTIONS
 Star reflections have been placed on many...
 SOURCE
 Pre-1974 Lake Survey Soundings; general bottom soundings.

Latitude and Longitude Plotting Interpolator

The Chicago Yacht Club Presents:



Co-Sponsors of the Chicago Yacht Club Verve Cup Regatta



Audi



2014 Event Sponsors and Suppliers:

Boston Beer

Karma Yacht Sales

Mount Gay Rum

West Marine

**Thank you to Sailing Weather Services for supporting onshore activities for the
2014 Verve Cup Regatta.**

Mark your calendars for the 2015 Verve Distance Race scheduled for August 8, 2015.