

## Bay Cup 1

Saturday, March 1, 2014

Skippers' Meeting Friday, February 28, 2014, 7:30 p.m.

Live Music by Kelly McGuire Saturday Evening

# FEATURING



## Sailing Instructions

### 1. RULES

- 1.1 The Race will be governed by the rules as defined by the Racing Rules of Sailing ("RRS").
- 1.2 The Penalty for violating RRS 31 by touching an anchored Committee Boat shall be to retire, and no exoneration is available. This modifies RRS 44.1 and 64.1(a).
- 1.3 The penalty for violating a rule of Part 2 with the result that another boat touches an anchored Race Committee Boat, shall be for the offending boat to retire.
- 1.4 For purposes of Sailing Instructions 1.2 and 1.3, touching a float and its line trailing from an anchored Race Committee Boat will not be treated as touching an anchored Race Committee Boat, but will be treated as touching a mark in violation of RRS 31 and penalties and exoneration will be controlled by RRS 44.1 and 64.1.

### 2. NOTICES TO COMPETITORS

Notices to competitors will be posted on the official notice board, located in the vicinity of the west end of the pool at Lakewood Yacht Club.

### **3. CHANGES TO SAILING INSTRUCTIONS**

- 3.1 Any written change to the Sailing Instructions will be posted before 0800 hours on the day it will take effect, except that any change to the race schedule will be posted by 2100 hours on the day before it will take effect.
- 3.2 Oral changes to the Sailing Instructions may be given on the water by hail on the appropriate VHF channel in accordance with RRS 90.2(c).

### **4. SIGNALS MADE ASHORE**

- 4.1 Signals made ashore will be displayed on the yardarm at Lakewood Yacht Club.
- 4.2 When flag AP is displayed ashore, “1 minute” is replaced with “not less than 60 minutes”.

### **5. RACE SCHEDULE**

The warning gun for the first start will be no earlier than 1030 hours.

### **6. CLASSES**

Class assignments and class flags will be identified and designated in Attachment B.

### **7. CLASS RULES FOR CRUISING FLEETS**

- 7.1 Boats in the Classic Canvas Class may use sails of woven polyester such as Dacron only.
- 7.2 Two headsails may not be carried at the same time, except that while changing headsails, the replacing sail may be set and trimmed before the replaced sail is lowered.
- 7.3 A whisker pole may be used to wing out a headsail, whose luff must be attached to a headstay. A whisker pole or spinnaker pole shall not be used to wing out a spinnaker.
- 7.4 Boats in the Poleless Cruising Spinnaker Class may use only asymmetric spinnakers, or symmetric spinnakers flown like an asymmetric spinnaker by means of a tacking device such as an ATN Tacker. No more than one spinnaker may be flown at a time and no more than two spinnakers may be carried on board. The Tack Point of Spinnaker (TPS) must be attached at the centerline of

the boat at the stem or on a fixed bowsprit. TPS shall not exceed 125% of “J”. Maximum Spinnaker Girth shall be no greater than 183% of “J” and Maximum Spinnaker Luff shall be no greater than 102% of “I”. The spinnaker may be used with or without a pennant, adjustable tack line, snuffer, or furler. No other spinnakers are allowed.

## **8. RACING AREA**

- 8.1 The race area will be in Galveston and Trinity Bay.
- 8.2 Courses 1 and 2 and courses 5 through 8 are located in Galveston Bay, west of the Houston Ship Channel and between the Kemah Shoreline, Red Bluff and Eagle Point. Courses 3 and 4 are located in Trinity Bay.
- 8.3 The approximate locations of the starting lines for different courses are described in Attachment A.

## **9. RADIO COMMUNICATION**

The Race Committee will monitor VHF Channel 72 and will use this channel to communicate with racers regarding the starting location and the starting sequence. Boats not having a VHF radio or one not operational shall not use this as grounds for redress.

## **10. CHECK IN**

- 10.1 Before the first Warning Signal for the race, a boat shall check in with the Race Committee on the water by sailing past the stern of the anchored Race Committee Boat on starboard tack and hailing the boat’s name or sail number, until acknowledged by the Race Committee.
- 10.2 Failure to check in is not subject to protest by another boat.
- 10.3 In the event the Race Committee protests a boat for failure to check in, a scoring penalty of the loss of one finishing position may be assessed by the protest committee.

## **11. THE COURSES**

- 11.1 Course descriptions are set out in Attachment A. The “Approximate Start Areas” set out in Attachment A are shown for convenience only and are not intended

to set out a specific location for the starting line or to set out specific bearings from the starting line to the first mark.

- 11.2 The start for courses 1 and 2 and for courses 5 through 8 is located approximately half a mile south of Clear Creek Channel marker “1”. The start for courses 3 and 4 is located in Trinity Bay, east of Markers “3” and “4” of the South Boater’s Cut.
- 11.3 No later than the Warning Signal for each class, the Race Committee will display, through the use of numeral pennants, the course to be sailed for that start.

## **12. MARKS**

Fixed marks will be those designated in the course descriptions in Attachment A. Inflatable marks will be orange tetrahedrons or orange balls.

## **13. THE START**

- 13.1 The starting line will be between a staff displaying an orange flag on the Race Committee Boat at the starboard end and a ball or tetrahedron on the port end.
- 13.2 Boats whose warning signal has not been made shall stay clear of the starting area.
- 13.3 Boats starting late shall keep clear of boats whose warning signal has been made.
- 13.4 Boats starting more than 20 minutes after the start for their class will be scored DNS (Did Not Start).
- 13.5 The race will start in accordance with RRS 26.

Warning..... Class flag up.....Sound.....5 min. before start

Preparatory..... Prep flag up.....Sound..... 4 min. before start

One Minute..... Prep flag down..... Long Sound..... 1 min. before start

Start.....Class flag down.....Sound

## **14. INTERFERENCE WITH COMMERCIAL TRAFFIC AND CROSSING OF THE HOUSTON SHIP CHANNEL**

- 14.1 Boats shall not interfere with commercial vessels operating in the Houston Ship Channel (HSC). Boats doing so will be subject to protest and disqualification.
- 14.2 The HSC ranks as an obstruction. It may be crossed only in non-racing mode.
- 14.3 Boats with outboard engines shall have the engine mounted on the transom while crossing the HSC from Galveston Bay to Trinity Bay.

## **15. SHORTENING COURSE**

In the event the Race Committee decides to shorten the course for some, but not all classes, the Race Committee will display the class flag for the class or classes, whose course is being shortened along with the “S” flag required by RRS 32.2.

## **16. RETIRING**

A boat that retires from the race shall notify the Race Committee as soon as possible by one or more of the following means: a) by radio using VHF Channel 72; b) by calling the LYC Office (281) 474-2511; c) by sailing past the Race Committee boat and announcing withdrawal and receiving acknowledgment.

## **17. THE FINISH**

Except in the event of a shortened course pursuant to RRS 32, the Finishing Line for courses 3 through 8 will be between an orange ball, and a staff displaying a blue flag on a Race Committee Boat. The Finishing Line for courses 1 and 2 will be between Marker “5” of the South Boater’s Cut and a staff displaying a blue flag on a Race Committee Boat. The Race Committee Boat shall be left to starboard.

## **18. TIME LIMITS**

- 18.1 For courses 1 and 2, the time limit for the first boat to finish will be 150 minutes (2 and a half hours) after the start of her class. The finishing window will be an additional 45 minutes. Boats that have not finished within 195 minutes after the start of their class will be scored DNF (“Did Not Finish”).



- 18.2 For courses 3 through 8, the time limit for the first boat to finish will be 240 minutes (4 hours). The finishing window will be an additional 60 minutes. Boats that have not finished within 300 minutes after the start of their class will be scored DNF.

## **19. PROTESTS AND REQUESTS FOR REDRESS**

The protest and redress procedures for this regatta will comply with the new RRS Attachment T. We will use Section B (Post Race Penalties) and Section C (Expedited Hearings).

- 19.1 A boat intending to protest another boat or to request redress shall notify the Race Committee via VHF Channel 72 at the first reasonable opportunity after finishing.  
A list of notifications will be posted as soon as it is available.
- 19.2 Protest forms are available in the LYC Clubhouse Office. Protests shall be delivered there as soon as possible and within the protest time limit. Protestors and Protestees are requested to promptly go to the LYC Clubhouse Office and either wait for resolution or leave a reliable contact number.
- 19.3 A boat may take a post race penalty, which shall be a Scoring Penalty, calculated as stated in rule 44.3(c). Prior to the Protest Time Limit, a boat may accept a 20% penalty. After the Protest Time Limit and before any hearing begins, a boat may accept a 30% Penalty.
- 19.4 The protest time limit will be sixty (60) minutes after the Race Committee Signal Boat returns to the Lakewood Inner Harbor or two hours after the last boat finishes, whichever is earlier.
- 19.5 Notices of scheduled hearing times and locations will be posted within thirty (30) minutes of the expiration of the protest time limit.
- 19.6 Notice of a protest by the Race Committee will be posted on the official notice board.
- 19.7 CHANGES IN HEARING PROCEDURES. This applies to all hearings except those under rule 69 or in case of injury or damage. If the protest committee is able to assemble the parties to a hearing before the protest time limit, it may begin a hearing and may waive the requirements of rule 61.2 or 62.2.
- 19.8 In the event of a redress hearing prior to the awards, the notification requirements of the US Sailing prescription to RRS 60 shall be met by posting a notice of redress hearing on the official notice board for at least fifteen minutes,

accompanied by other efforts to contact participants. Those boats in the same class wishing to attend the hearing may so indicate in writing by signing a list in the LYC Clubhouse office and appearing in the hearing room as directed. (one representative per boat)"

## 20. SCORING

- 20.1 All classes will be scored using Time on Distance (TOD) scoring. The Low Point Scoring System of Appendix A will apply. No score will be excluded. This modifies Appendix A2.
- 20.2 One race needs to be completed to constitute a regatta.

## 21. PRIZES

- 21.1 Trophies will be awarded to the first two boats in classes or divisions of four or five boats, to the first three boats in classes or divisions of six to eight boats and to the first four boats in classes with more than eight boats.
- 21.2 Bay Cup Series awards will be given to the top finishers in each class, who will have competed in both, 2014 Bay Cup I and 2014 Bay Cup II (same boat, same class, and same skipper).
- 21.3 Prizes will be awarded during the post-race party Saturday evening.

## 22. INSURANCE

Each participating boat shall be insured with valid third-party liability insurance with a minimum coverage of \$ 300,000 per event.

## 23. DISCLAIMER OF LIABILITY

Competitors participate in the regatta entirely at their own risk – see RRS 4, Decision to Race. The organizing authority will not accept liability for material damage or personal injury or death sustained in conjunction with or prior to, during or after the regatta.



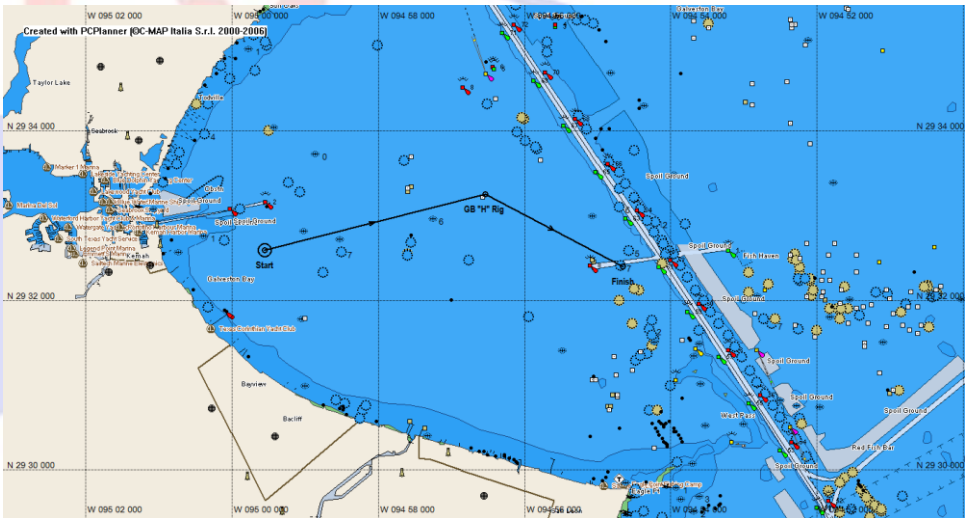
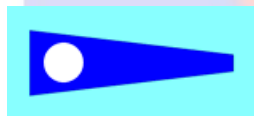
ATTACHMENT A: COURSES

Course #1



Name	Description	Lat	Lon	BRG	Dst	Dst tot
Start	Btwn Orn Ball & Boat	29°32.600 N	094°59.550 W		(Nm)	(Nm)
GB E Low Range	GB E to Starboard	29°35.780 N	094°56.940 W	36°	3.91	3.91
Finish	Btwn SC #5 & Boat	29°32.410 N	094°54.655 W	149°	3.91	7.82

Course #2

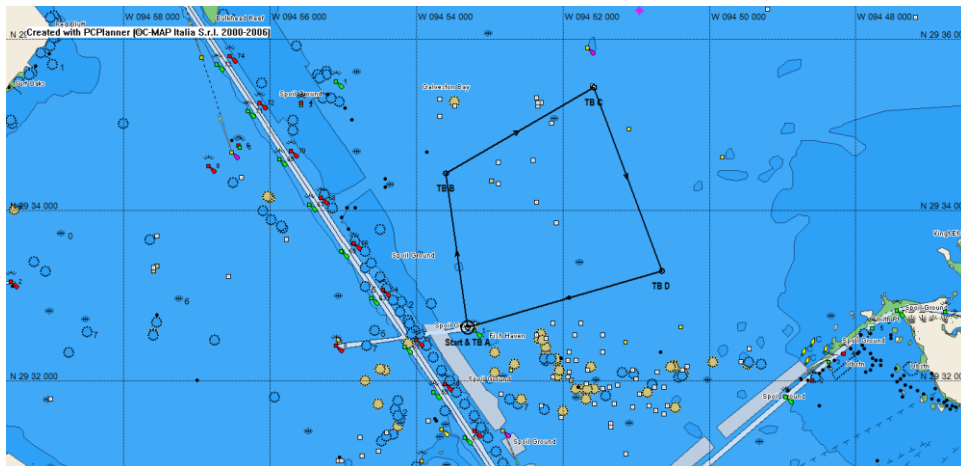
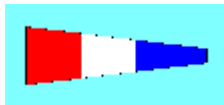


Name	Description	Lat	Lon	BRG	Dst	Dst tot
Start	Btwn Orn Ball & Boat	29°32.600 N	094°59.550 W		(Nm)	(Nm)
GB "H" Rig	GB "H" Rig to Stbd	29°33.260 N	094°56.540 W	76°	2.7	2.7
Finish	Btwn SC #5 & Boat	29°32.410 N	094°54.655 W	117°	1.85	4.55



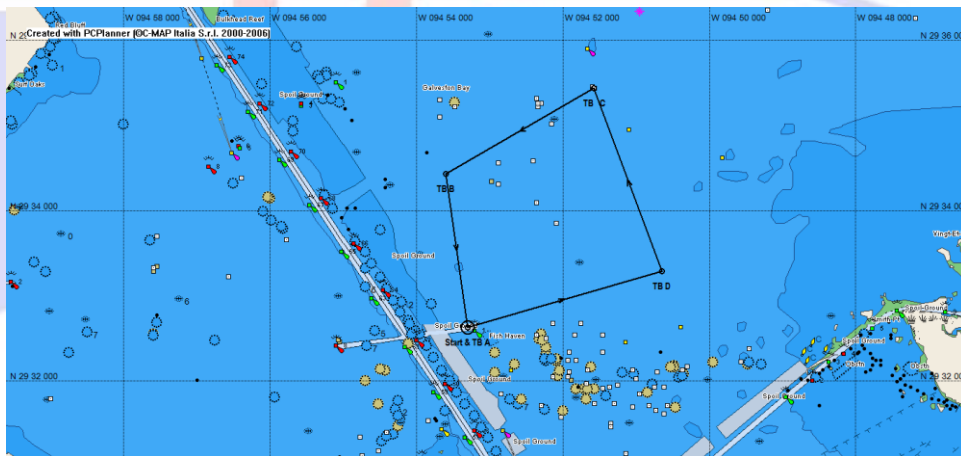
# ATTACHMENT A: COURSES

## Course #3



Name	Description	Lat	Lon	BRG	Dst	Dst tot
Start & TB A	Btwn Orn Mark & Boat	29°32.640 N	094°53.300 W		(Nm)	(Nm)
TB B	Orn Tet to Starboard	29°34.440 N	094°53.600 W	352°	1.82	1.82
TB C	Yellow Rig to Stbd	29°35.446 N	094°51.579 W	60°	2.03	3.84
TB D	Orn Tet to Starboard	29°33.300 N	094°50.650 W	159°	2.29	6.14
Finish	Btwn Orn Ball & Boat	29°32.640 N	094°53.300 W	254°	2.4	8.53

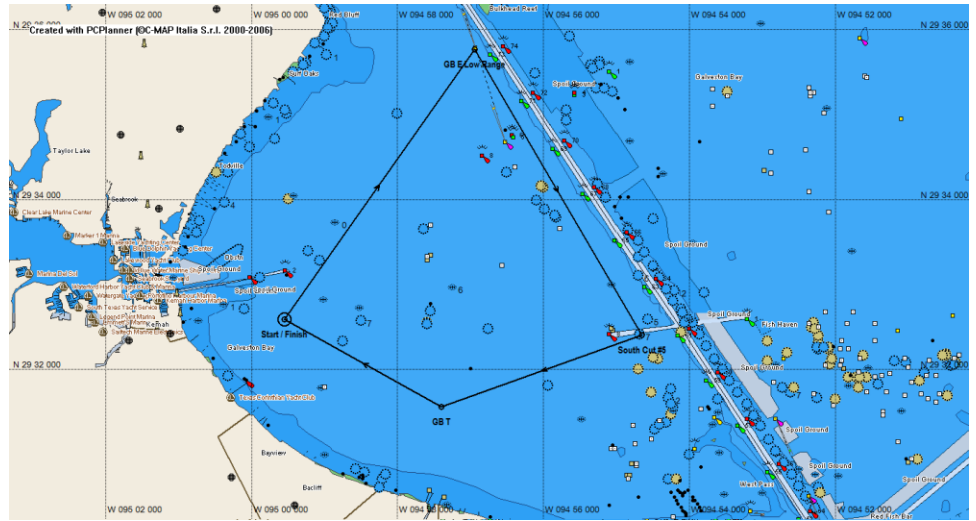
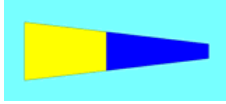
## Course #4



Name	Description	Lat	Lon	BRG	Dst	Dst tot
Start & TB A	Btwn Orn Mark & Boat	29°32.640 N	094°53.300 W		(Nm)	(Nm)
TB D	Orn Tet to Port	29°33.300 N	094°50.650 W	74°	2.4	2.4
TB C	Yellow Rig to Port	29°35.446 N	094°51.579 W	339°	2.29	4.69
TB B	Orn Tet to Port	29°34.440 N	094°53.600 W	240°	2.03	6.72
Finish	Btwn Orn Ball & Boat	29°32.640 N	094°53.300 W	172°	1.82	8.53

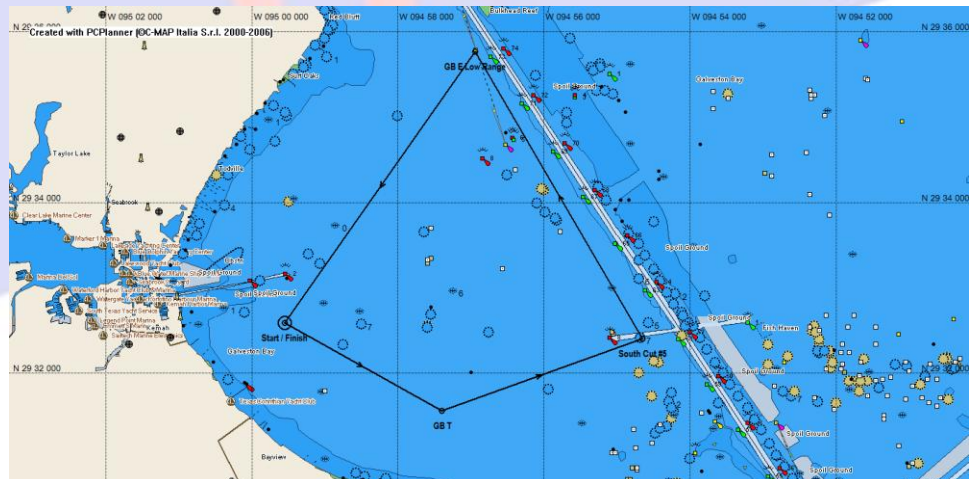
# ATTACHMENT A: COURSES

## Course #5



Name	Description	Lat	Lon	BRG	Dst	Dst tot
Start	Btwn Orn Mark & Boat	29°32.600 N	094°59.550 W		(Nm)	(Nm)
GB E Low Range	GB E Low Rng to Stbd	29°35.780 N	094°56.940 W	36°	3.91	3.91
South Cut #5	South Cut #5 to Stbd	29°32.410 N	094°54.655 W	149°	3.91	7.82
GB T	Orn Tet to Stbd	29°31.570 N	094°57.400 W	251°	2.53	10.35
Finish	Btwn Orn Ball & Boat	29°32.600 N	094°59.550 W	299°	2.14	12.49

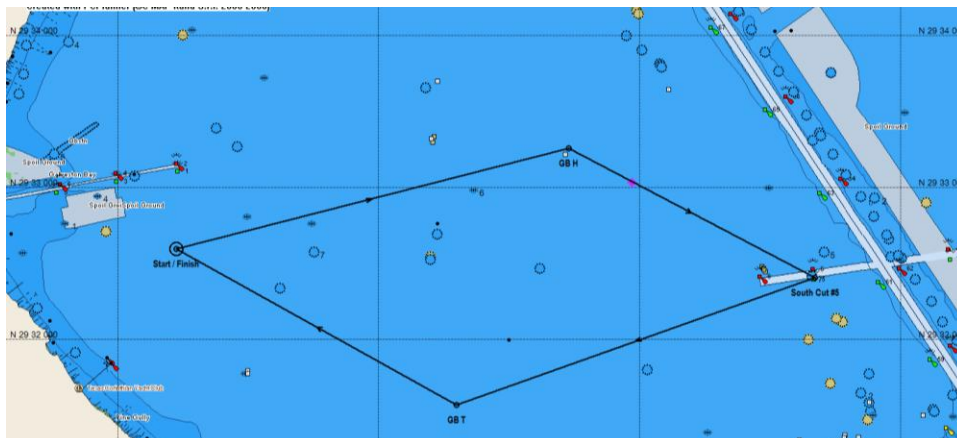
## Course #6



Name	Description	Lat	Lon	BRG	Dst	Dst tot
Start	Btwn Orn Mark & Boat	29°32.600 N	094°59.550 W		(Nm)	(Nm)
GB T	Orn Tet to Port	29°31.570 N	094°57.400 W	119°	2.14	2.14
South Cut #5	South Cut #5 to Port	29°32.410 N	094°54.655 W	71°	2.53	4.67
GB E Low Range	GB E Low Rng to Port	29°35.780 N	094°56.940 W	329°	3.91	8.58
Finish	Btwn Orn Ball & Boat	29°32.600 N	094°59.550 W	216°	3.91	12.49

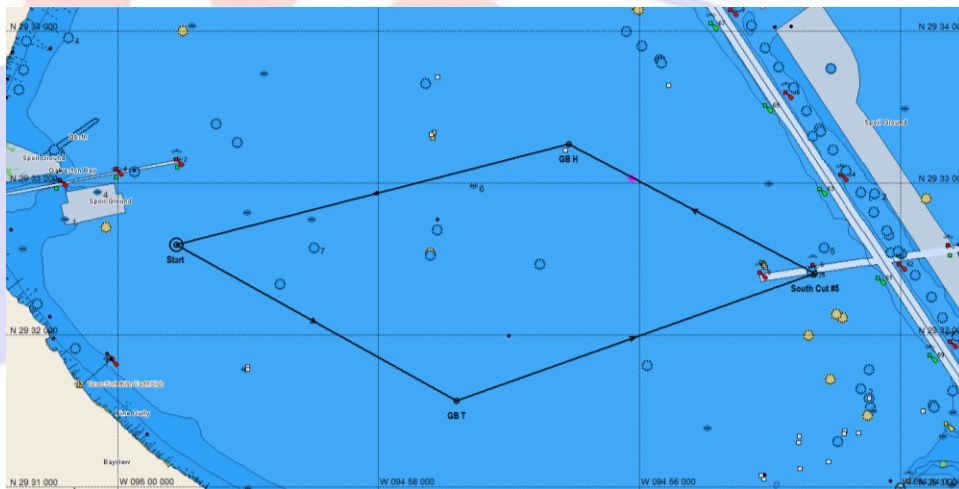
# ATTACHMENT A: COURSES

## Course #7



Name	Description	Lat	Lon	BRG	Dst	Dst tot
Start	Btwn Orn Mark & Boat	29°32.600 N	094°59.550 W		(Nm)	(Nm)
GB H	GB H to Starboard	29°33.260 N	094°56.540 W	76°	2.7	2.7
South Cut #5	South Cut #5 to Stbd	29°32.410 N	094°54.655 W	117°	1.85	4.55
GB T	Orn Tet to Stbd	29°31.570 N	094°57.400 W	251°	2.53	7.08
Finish	Btwn Orn Ball & Boat	29°32.600 N	094°59.550 W	299°	2.14	9.21

## Course #8



Name	Description	Lat	Lon	BRG	Dst	Dst tot
Start	Btwn Orn Mark & Boat	29°32.600 N	094°59.550 W		(Nm)	(Nm)
GB T	Orn Tet to Port	29°31.570 N	094°57.400 W	119°	2.14	2.14
South Cut #5	South Cut #5 to Port	29°32.410 N	094°54.655 W	71°	2.53	4.67
GB H	GB H to Port	29°33.260 N	094°56.540 W	297°	1.85	6.51
Finish	Btwn Orn Ball & Boat	29°32.600 N	094°59.550 W	256°	2.7	9.21

## ATTACHMENT B: CLASSES AND STARTING SEQUENCE

### CLASSES AND STARTING SEQUENCE (first race) FLAG

CRUISING POLELESS SPINNAKER.....BROWN

PHRF NON-SPIN.....BROWN

PHRF SPIN A.....PINK

PHRF SPIN B.....GREEN

CRUISING NON-SPIN CLASSIC CANVAS.....YELLOW