

**SAILING INSTRUCTIONS FOR
INLAND LAKE YACHTING ASSOCIATION (ILYA)
E SCOW CHAMPIONSHIP REGATTA**

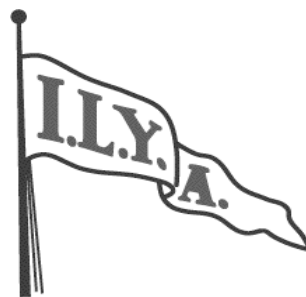
AUGUST 13-17, 2014

OSHKOSH YACHT CLUB

OSHKOSH, WISCONSIN

Headquarters: The Waters

**ILYA Regatta Representative: Commodore Peter Friend
(All times given are Central Daylight Time)**



Sailing is an activity that has an inherent risk of damage and injury. Competitors in this event are participating entirely at their own risk. See RRS 4, Decision to Race. The race organizers (the organizing authority, race committee, protest committee, host club, sponsors, or any other organization or official) will not be responsible for damage to any boat or other property or the injury to any competitor, including death, sustained as a result of participation in this event. By participating in this event, each competitor, or in the case of minors, each competitor's parent or guardian agrees to release the race organizers from any and all liability associated with such competitor's participation in this event to the fullest extent permitted by law.

1. RULES

The regatta will be governed by the rules as defined in the current Racing Rules of Sailing and the scantling rules of the National Class E Scow Association, and NCEA By-laws Articles V, VI and VIII, parts 4, 5 and 7. Crew changes from race to race are allowed during this event.

2. ENTRIES

The regatta is open to Class E Scows. Helms-persons shall be Regular, Family, Youth or Life Members of the ILYA. Eligible boats may be entered by completing registration with the Association.

3. NOTICE TO COMPETITORS

Notices to competitors will be posted on the Official Notice Board located at Regatta Headquarters and a redundant notice board at Millers Bay.

4. COMPETITORS' BRIEFING MEETING

The competitors' briefing will be at approximately 8:15 a.m., Thursday, August 14, at Regatta Headquarters and by VHF Radio. Channel 74 is the competitor channel.

5. CHANGES TO SAILING INSTRUCTIONS

Any changes to the sailing instructions (SI) will be posted no later than 90 minutes before the first warning signal on the day it will take effect. Except that any change in the schedule of races will be posted by 6:00 p.m. on the day before it will take effect.

6. SIGNALS MADE ASHORE

6.1 Signals made ashore will be displayed by the Fleet Signal Boat located at Regatta Headquarters.

6.2 Flag "F," displayed at least one hour prior to the warning signal of the race or races in which it applies, means that all boats are required to sail with NCEA mainsail flotation panels installed. Flotation requirement will remain in affect until Flag "F" is removed which will be done with one sound signal and announced on the competitor channel.

6.3 When the Answering Pennant ("AP") is displayed ashore, '1 minute' is replaced with 'not less than 45 minutes in the Race Signals AP'.

6.4 Approximately one hour prior to the scheduled warning signal of the first race of the day, the signal boat will fire a gun, or make another sound signal. When multiple fleets are scheduled to start at the same time, only one signal boat may make this signal.

7. NOT USED

8. NUMBER AND SCHEDULE OF RACES

8.1 Six races are scheduled, of which three must be completed to constitute a regatta.

8.2 The Warning Signal for the first race, August 14, will be at 9:30 a.m. Except when races are sailed back to back, the approximate time of the warning signal for subsequent races will be posted and or announced on the competitors radio channel.

8.3 No warning signal will be made after 12:00 p.m. on Sunday, August 17.

9. CLASS FLAG

The class flag will be an NCEA class flag.

10. RACING AREA

The racing area will be on the navigable waters of Lake Winnebago near Millers Bay and The Waters and will be described at the Competitor Briefings or by notice on the Official Notice Boards.

11. THE COURSE

11.1 The courses and their designations are shown as COURSE ILLUSTRATIONS.

11.2 No later than the warning signal, the race committee signal boat will display the course designation and approximate compass bearing to the first mark.

11.3 When there is a gate, boats shall sail between the gate marks from the direction of the previous mark and round either gate mark. If only one mark of the gate is present, it should be rounded, leaving it to port.

12. MARKS

All marks will be large orange balls and the offset mark will be an orange ball.

13. THE START

13.1 Races will be started by using RRS 26.

13.2 RRS 30.1 (the I FLAG RULE) will be in effect for all starts. This changes Race Signals.

13.3 The starting line will be:

13.3.1 The starting line will be between a staff displaying an orange flag on the RC boat at the starboard end of the line and either a staff displaying an orange flag on a RC boat at the port end or the course side of a nearby mark,

13.3.2 or from a staff displaying an orange flag on the RC boat at the starboard end of the line to a staff displaying an orange flag or flags on an RC boat in the approximate center of the starting line, and thence to a staff displaying an orange flag on an RC boat at the port end.

13.4 A boat starting later than five minutes after her starting signal will be scored DNS. This changes RRS A4.1.

13.5 If a midline boat is in place in accordance with SI 13.3.2, yachts subject to the I FLAG RULE (RRS 30.1) shall sail to the pre-start side of the line around either end, or around the mid-line boat, leaving it to port as if it were the port end of the starting line, before starting. This modifies RRS 30.1. (See Course Illustrations.)

13.6 If a midline boat is to be used on the starting line in accordance with SI 13.3.2, a notice to that effect will be posted on the Official Notice Boards.

13.7 If RRS 30.2 is used, flag Z will be displayed alone as the Preparatory Signal (flag I is to be assumed.) This changes Race Signals.

13.8 If the race is abandoned after the starting signal under the Z or Black Flag, all competitors who received a 20% scoring penalty under the RRS 30.2 or were disqualified under the RRS 30.3 in the abandoned race are again eligible to race without penalty. This changes RRS 30.2 and 30.3.

14. RECALLS

14.1 Boats that are OCS under an individual recall will be notified by VHF radio and possibly by hail.

14.2 Following the display of Code Flag "X", the Race Committee *will attempt to announce the sail number* of all boats identified on the course side of the starting line at the starting signal and boats that must comply with RRS 30.1. Such announcement is a courtesy and failure of the race committee to make the announcement, or of boats to hear or understand it, or the order of the hails, shall not be grounds for granting redress.

15. CHANGE OF THE NEXT LEG OF THE COURSE

15.1 To change the next leg of the course, the race committee will either move the original mark (or the finishing line) to a new position, or the RC will lay a new mark and remove the original mark as soon as practicable.

15.2 The RC may adjust gate marks without further signaling to maintain the appropriate course configuration.

16. THE FINISH

16.1 The finishing line will be displayed between a staff displaying an orange flag on a Race Committee boat and the course side of a nearby mark, or between staffs displaying orange flags on two Race Committee boats.

16.2 Flag "A" displayed with no sound while boats are finishing means 'no more racing today.'

16.3 Flag "H" displayed with no sound while boats are finishing means 'racing will continue after a break either on shore or on the water.'

- 16.4 When neither Flag "A" nor Flag "H" is flying while boats are finishing, another race may follow immediately.
- 16.5 A boat that retires from a race shall notify a RC boat before leaving the racing area, or, if that is not possible, notify a regatta official at Regatta Headquarters immediately upon arrival on shore.
- 17. PENALTIES**
RRS 44.1 is changed so that the Two-Turns Penalty is replaced by the One-Turn Penalty.
- 18. TIME LIMIT**
- 18.1 The time limit will be 90 minutes.
- 18.2 Boats still racing 30 minutes after the first boat sails the course and finishes will be scored the position of the last boat to finish plus 2. This changes RRS 35 and A4.1.
- 19. PROTEST AND REQUESTS FOR REDRESS**
- 19.1 A boat intending to protest about an incident that occurs in the racing area shall notify the RC finish boat of her intention, including the sail number of the boat (s) being protested. This changes RRS 61.1 (a).
- 19.2 Protests shall be written on forms available at Regatta Headquarters and delivered there within the protest time, which will end one hour after the signal boat docks. The docking time will be posted.
- 19.3 Notices of protests and requests for redress will be posted within 20 minutes of the expiration of the protest time limit to inform competitors of hearings in which they are parties or named as witnesses. Hearings will be held at a location at Regatta Headquarters.
- 19.4 Notice of a request for redress including the nature of the request and the grounds on which it is filed shall be considered to fulfill the requirements of the prescription to RRS 63.2
- 19.5 On the last day of the regatta a request for reopening a hearing shall be delivered:
- (a) within the protest time limit if the party requesting reopening was informed of the decision on the previous day.
 - (b) No later than 30 minutes after the party requesting reopening was informed of the decision on that day.
 - (c) This changes RRS 66.
- 19.6 A boat that does not comply with 44.1 or 44.2, but prior to a hearing, acknowledges breaking a rule, shall be penalized 50% of the number of boats entered, but not less than six places, except that she shall not be scored worse than DNF, as approved by the Protest Committee.
- 20. SCORING**
The Low Point System in Appendix A of the RRS will apply, except that RRS A2 is changed so that each boat's total score will be the sum of her scores for all races.
- 21. NOT USED**
- 22. NOT USED**
- 23. RADIO COMMUNICATION**
The only communication devices that may be used by competitors when racing are: (a) a weather monitor, (b) a VHF radio tuned to receive only RC transmissions that are intended for all boats (Competitor channel) and (c) a cell phone that may be used for emergency purposes only. The penalty for breaking this rule will be total disqualification from the regatta or such lesser penalty as may be determined by the Protest Committee.
- 24. NOT USED**
- 25. OUTSIDE HELP**
A boat that receives outside help other than help permitted by RRS 41, or from a non competitor or non competing boat, shall retire. This changes RRS 41.
- 26. MEDIA RIGHTS**
Competitors give absolute right and permission for video footage or photographs of themselves or their boat generated during an ILYA event to be published in any media for press, editorial or advertising purposes.

COURSE ILLUSTRATIONS

COURSE DISPLAY SHORTHAND

WINDWARD/LEEWARD COURSES ARE DESIGNATED WITH A "W" FOR COURSES THAT FINISH UPWIND, AND AN "L" FOR COURSES THAT FINISH DOWNWIND. THE NUMERAL ACCOMPANYING THE COURSE DESIGNATION INDICATES THE NUMBER OF LEGS OF THE COURSE.

ALL OTHER COURSES ARE DESIGNATED BY A COMBINATION OF LAPS DISPLAYED USING THE TYPE OF LAP (T = TRIANGLE LAP), A NUMBER INDICATING THE NUMBER OF SUCCESSIVE REPETITIONS OF THAT PARTICULAR TYPE OF LAP, AND A MODIFIER (+) IF THE FINISH IS TO BE TO WINDWARD.

WINDWARD/LEEWARD EXAMPLES

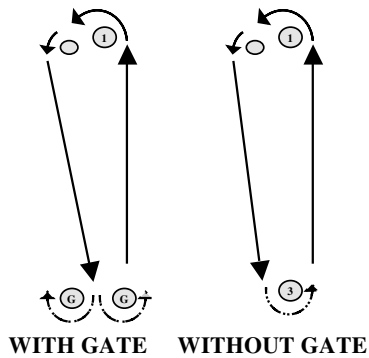
- W3 = 3 LEGS (FINISHING UPWIND)
- W5 = 5 LEGS (FINISHING UPWIND)
- L4 = 4 LEGS (FINISHING DOWNWIND)
- L6 = 6 LEGS (FINISHING DOWNWIND)

OTHER COURSE EXAMPLES

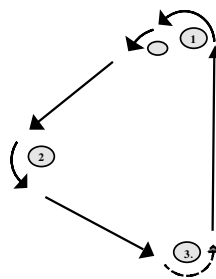
- WT+ = WINDWARD LEEWARD FOLLOWED BY TRIANGLE PLUS UPWIND LEG TO FINISH
- W2T = TWO WINDWARD LEEWARD LAPS PLUS A TRIANGLE, FINISHING DOWNWIND
- O+ = TRIANGLE LAP FOLLOWED BY A WINDWARD LEEWARD LAP PLUS UPWIND LEG TO FINISH

NOTE: AN RC BOAT MAY BE SUBSTITUTED FOR MARK(S) (S) OR (F) ON STARTING OR FINISHING LINES

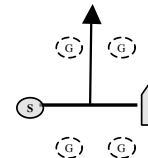
W = WINDWARD/LEEWARD LAP



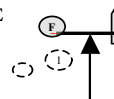
T = TRIANGLE LAP



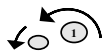
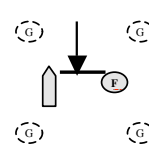
STARTING LINE



+ = UPWIND FINISHING LINE



DOWNWIND FINISHING LINE



1 = WINDWARD MARK WITH OFFSET



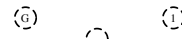
G = LEEWARD GATE



2 = GYBE MARK

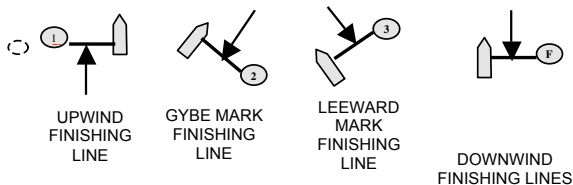


3 = LEEWARD MARK IF TRIANGLE OR NO GATE



MARKS TO BE IGNORED IF PRESENT

FINISHING LINES – RULE 32 (REDUCED NUMBER OF LEGS)



ALLOWABLE ROUND-AN-END COURSES WITH MID-STARTING LINE BOAT (ALSO SEE SIs)

