



Northeast Junior Olympic Sailing Festival  
July 14-16 2014  
SailMaine, South Portland, ME

### Sailing Instructions

- 1) RULES - This regatta will be governed by the rules as defined in the Racing Rules of Sailing 2013-2016.
- 2) NOTICES TO COMPETITORS – Notices to competitors will be posted on the official notice board in the registration tent. The race committee may also publicize changes by other means as a courtesy, this changes rule 62.1(a).
- 3) CHANGES TO THE SAILING INSTRUCTIONS – Any changes to the sailing instructions will be posted by 0900 on the day it is to take effect, except any change to the schedule of racing will be posted by 1900 on the day before it will take effect.
- 4) SIGNALS MADE ASHORE – Signals ashore will be posted at the Registration Table. When flag AP is displayed ashore, "1 minute" is replaced with "not less than 60 minutes"
- 5) SCHEDULE -  
Monday, July 14: Registration and Boat Storage assignments  
3:00 pm Registration & check-in

Tuesday, July 15

- 8:00 am Registration & check-in, breakfast snacks at HQ tent
- 9:45 am Coaches meeting at HQ tent
- 10:00 am Skippers Meeting at HQ tent
- 10:30 am Harbor Start Opti RWB 3
- 11:00 am Harbor Start 420s and Lasers
- 11:30 am Harbor Start Opti Green Fleet
- Initiation of Starting Sequence for first race for each fleet one hour after harbor start
- 4:00 pm No warning signal after 4:00 pm

Wednesday, July 16

8:00 am Breakfast snacks at HQ tent  
9:00 am Coaches meeting at HQ tent  
9:30 am Skippers Meeting at HQ tent  
10:00 am Harbor Start Opti RWB  
10:30 am Harbor Start 420s and Lasers  
10:30 am Opti Green Fleet Skipper's Meeting  
11:00 am Harbor Start Opti Green Fleet  
Initiation of Starting Sequence for first race for each fleet one hour after harbor start  
4:00 pm No warning signal after 4:00 pm

- 6) CLASS FLAGS
  - a) Club 420 – Numeral Pennant 1
  - b) Laser – Numeral Pennant 2
  - c) Optimist – Numeral Pennant 3
  - d) Optimist Green – No flag. This class will be on a separate course. Starting will be by the Appendix S – Sound Signal Starting System.
- 7) RACING AREA – The racing area will be the waters of Portland Harbor and the surrounding bays. See Course Diagrams for assigned racing circles and Courses.
- 8) THE COURSE
  - a) C420/Laser/Optimist RWB will sail a trapezoid course described in the COURSE DIAGRAMS.
  - b) Optimist Green will sail a port triangle described in the COURSE DIAGRAMS.
- 9) MARKS OF THE COURSE
  - a) C420/Laser/OptimistRWB will use orange inflatable marks.
  - b) C420/Laser/OptimistRWB new marks will be smaller yellow inflatable marks.
  - c) Optimist Green will use inflatable animal marks.
- 10) CHANGE OF THE NEXT LEG OF THE COURSE - To change the next leg of the course, the race committee will lay a new mark (or move the finishing line) and remove the original mark as soon as practicable. When in a subsequent change of course a new mark is replaced, it will be replaced with an original mark.
- 11) THE START - The starting line will be between an orange flag displayed on the committee boat and the nearby port end starting mark.
- 12) THE FINISH – The finish line will be between a blue flag displayed on the committee boat and the nearby starboard end finish mark.
- 13) TIME LIMIT – The time limit is 60 minutes for the first boat to finish. Boats finishing more than half hour after the first boat to finish will be scored 2 points more than the number of boats registered in her class. This changes appendix A4.1
- 14) PROTESTS - The time limit for filing a protest shall be one hour after the docking of the race committee signal boat.
- 15) SCORING - A maximum of 10 races are scheduled, of which 1 shall be completed to constitute a series. If 6 or more races are sailed, a boat's worst score shall be discarded. This changes rule A2.
- 16) COACH AND SUPPORT BOATS - Coaches will be asked to register at the event. Coaches who are able to bring proof of US Sailing certification will be given

appropriate access to participants and recognition. Race Management reserves the right if any coach is overly aggressive or impedes the racing or the race course to send the coach in; coaches are greatly encouraged to provide sound, safe and courteous information to the competitors between races and are not allowed to coach during the race, with the exception of the Green Fleets. Coaches shall monitor the designated RC VHF radio channel at all times while on the water.

17)PRIZES

- a) Competition medals shall be awarded to the top three finishes in each class, Club 420, Laser Radial, Optimist Overall, and Optimist RWB.
- b) Optimist Green Fleet sailors will receive participation medals.
- c) Additional prizes may be awarded based on criteria other than competition at the discretion of the Organizing Authority.

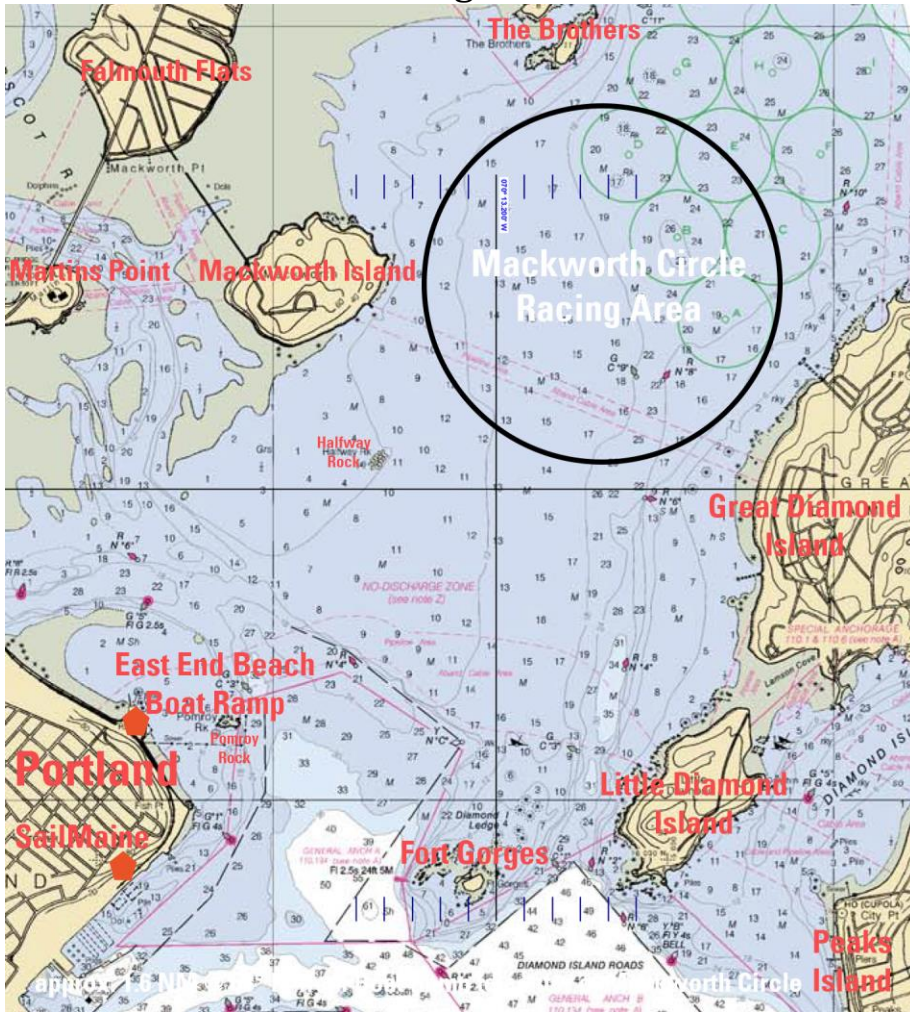
18)SAFETY

- a) A US Coast Guard approved personal flotation device shall be worn, properly fastened, at all times while launching and when sailing except while temporarily adding or removing clothing. Failure to comply with this rule may result in disqualification.
- b) A boat retiring from a race shall notify a Race Committee vessel before leaving the course and immediately after arrival ashore at the launch ramp at Bug Light.
- c)

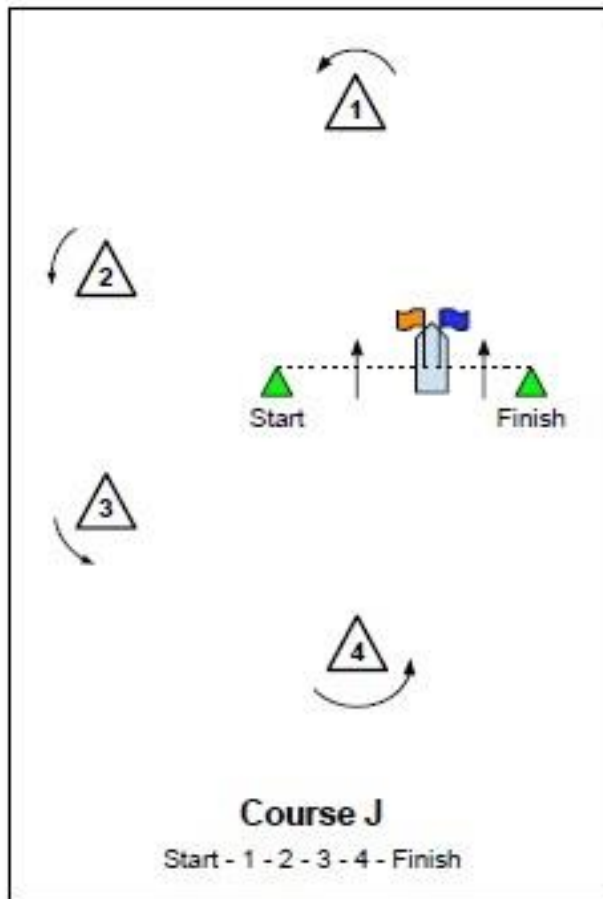
19)DISCLAIMER OF LIABILITY - Competitors participate in the regatta entirely at their own risk. See Rule 4, Decision To Race. The Organizing Authority and committee will not accept any liability for material damage, personal injury, or death sustained in conjunction with, prior to, during, or after the regatta. A waiver shall be signed by all competitors and shall be considered one the documents governing the regatta.

20)CONTACT INFORMATION – Gerry Tiernan SailMaine 58 Fore Street Portland, Maine 04103 207-772-7245

# Racing Area



# Course Diagram



Courtesy of Marblehead Junior Race Week