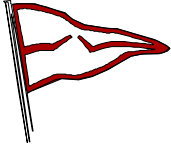


Boatyard Bar & Grill Race to Benefit CRAB

Eastport Yacht Club

August 23, 2014



SAILING INSTRUCTIONS

1 RULES

The race will be governed by the rules as defined in *The Racing Rules of Sailing* (RRS), except as changed by the Notice of Race and/or Sailing Instructions (SIs). The rules in the SIs shall take precedence in the event of a conflict. This changes RRS 63.7.

2 NOTICES TO COMPETITORS

Notices to competitors will be posted on the Official Notice Board located on the waterside at Eastport Yacht Club (EYC).

3 CHANGES TO THE SAILING INSTRUCTIONS

Any change to the SIs will be posted before 0900 hours on the day of the race.

4 SIGNALS MADE ASHORE

4.1 Signals made ashore will be displayed from the EYC flagpole.

4.2 When flag AP is displayed ashore, "1 minute" is replaced with "not less than 60 minutes in the race signal AP. This changes RRS Race Signals.

5 SCHEDULE OF RACES

5.1 Number of races: one.

5.2 Rendezvous at 1100 hours in the vicinity of CBYRA Region 3 Annapolis Area mark "X" (R2, FL 2.5s) at the mouth of the Severn River.

5.3 The scheduled time of the warning signal is 1155 hours.

5.4 No warning signal will be made after 1330 hours.

5.5 All PHRF and one-design racers will display from the backstay their class flag as specified in paragraph 4 of the CBYRA Green Book General Sailing Instructions. The J/70 class is not required to display a class flag. Competitors in the Freedom 20 class will display the CRAB burgee from the backstay.

6 RACING AREA

The racing area will use the CBYRA Region 3 Annapolis Area marks in the Severn River and Chesapeake Bay.

7 THE COURSE

- 7.1 For all classes EXCEPT the Harbor 20 class, Race Committee will designate one of two possible courses to be sailed (refer to Figure 1). The board designating the course to be sailed will be displayed on the non-start side of the Signal Boat. The two possible courses are:

Red "P" Course:

START – CBYRA "H" – G87 – FINISH

All rounding marks shall be kept to port.

Green "S" Course:

START – G87 – CBYRA "H" – FINISH

All rounding marks shall be kept to starboard.

- 7.2 For the **HARBOR 20** class, refer to Attachment A.

8 MARKS

- 8.1 For all classes EXCEPT the Harbor 20 class, the marks have the following Lat/Long coordinates.

CBYRA "X"

R2, Fl 2.5s

N 38° 56.50'

W 076° 25.56'

CBYRA "H"

GC SR

N 38° 53.65'

W 076° 25.88'

G87

G "WR87"

N 38° 55.90'

W 076° 23.60'

- 8.2 For the **HARBOR 20** class, refer to Attachment A.

9 THE START

- 9.1 For all classes EXCEPT the Harbor 20 class, this will be a pursuit race with a reverse PHRF starting order. The boat with the slowest rating will start first and the fastest will start last.
- 9.2 The race committee will signal the starting sequence as follows (this changes RRS 26):

Time	Signal	Flag/Sound
1155	Warning signal for all boats	Raise large EYC burgee with 1 sound.
1156	Preparatory signal for the first boat to start	Raise code flag "P" with 1 sound.
1159		Lower code flag "P" with a long sound.
1200	Starting signal for the first boat to start	Lower large EYC burgee and briefly raise number pennant "0" with 1 sound.
each subsequent start time	Starting signal for remaining boats	Briefly raise number pennant "0" with 1 sound.

- 9.3 For the purposes of definition of "racing," each boat's preparatory signal is 4 minutes prior to their scheduled start.
- 9.4 The start times for all boats will be based on their PHRF handicap and will be an interval from the warning signal. The race committee will use civilian GPS time synchronization. The Race Committee will attempt to broadcast each starting time on VHF channel 72. Failure of the Race Committee to announce a start time will not be grounds for redress.
- 9.5 The start time for each boat will be available at EYC no later than 1730 hours on August 22, 2014, and will be posted on the EYC website.

- 9.6 The start line will be between a staff displaying an orange flag on the race committee boat and **CBYRA "X."**
- 9.7 After the warning signal for the first start, boats shall stay clear of the starting area until 4 minutes before their scheduled starting time.
- 9.8 RRS 29.1 is replaced with: "When at a boat's starting signal any part of her hull, crew or equipment is on the course side of the starting line, the race committee shall promptly hail her number on VHF channel 72. ***Individual Recall, code flag "X," will not be used.***"
- 9.9 Boats that are OCS will receive a scoring penalty of 10 minutes plus the amount of time early. This changes RRS 44.3(c).
- 9.10 In the event a postponement is signaled on the water, the race committee will announce the revised start times on VHF channel 72 before lowering the postponement flag.
- 9.11 Boats registered in the **CRAB** and **PHRF NON SPIN** classes may not use spinnakers. Boats registered in **PHRF SPIN** may use spinnakers. One-design classes will register/race **PHRF SPIN** or **NON-SPIN**, in accordance with their class rules.
- 9.12 For the **HARBOR 20** class, refer to Attachment A.

10 THE FINISH

- 10.1 The finish line will be between a staff displaying an orange flag on the race committee boat and **CBYRA "X."**
- 10.2 The race committee may shorten the course at any rounding mark in accordance with RRS 32.
- 10.3 For the **HARBOR 20** class, refer to Attachment A.

11 TIME LIMIT

- 11.1 If no boat finishes within 3-1/2 hours of the start of ***the first boat*** the race will be abandoned.
- 11.2 Boats failing to finish within 1 hour after the first boat that sails the course and finishes will be scored Did Not Finish. This changes RRS 35 and A4. Boats leaving the course without finishing shall promptly notify the race committee on VHF channel 72.
- 11.3 For the **HARBOR 20** class, refer to Attachment A.

12 PROTESTS AND REQUESTS FOR REDRESS

- 12.1 Protest forms are available at EYC. Protests shall be delivered there within the protest time limit.
- 12.2 Boats intending to protest must so notify the race committee when they finish, or via VHF channel 72 if and when they leave the race course without finishing.
- 12.3 The protest time limit is 60 minutes after the Race Committee Signal Boat dock time.
- 12.4 Notices will be posted within 30 minutes after the protest time limit to inform competitors of hearings in which they are parties or named as witnesses. Hearings will be held at EYC beginning approximately 30 minutes after the protest time limit.
- 12.5 Notices of protests by the race committee or protest committee will be posted on the Official Notice Board to inform boats under RRS 61.1(b).

13 SCORING

- 13.1 Boats will be scored in the order of finish.
- 13.2 There will be at least four (4) scored classes: **CRAB, PHRF SPIN, PHRF NON-SPIN, and HARBOR 20.**
- 13.3 ONE DESIGN scoring will be granted for any class with at least five (5) entries.

14 SAFETY REGULATIONS

Boats shall check in with the race committee boat prior to their start by hail of their sail number (or name if no sail number) and receiving a reply of that information by the race committee.

15 RADIO COMMUNICATIONS

- 15.1 The race committee will communicate with the competitors on VHF channel 72.
- 15.2 Boats are encouraged to make contact with commercial traffic on VHF channel 13, as required for safety.
- 15.3 Specially-designated and equipped CRAB boats may communicate with their designated safety boat.

16 COMMERCIAL TRAFFIC

- 16.1 A boat may not exercise right of way, cross in proximity to, or interfere with reasonable transit of the race area by commercial freighters, tugs and tows or other commercial vessels that are unable to respond readily. A boat protested under this rule has the burden of proof that she complied with this rule. Boats shall take evasive action well in advance of any potentially dangerous situation.
- 16.2 The race committee or protest committee may protest under SI 16.1, based on information received from competitors or interested parties. This changes RRS 60.2 and 60.3. There is no time limit for protests filed under SI 16.1. This modifies RRS 61.3.
- 16.3 RRS 42.3 (Propulsion - Exceptions) is changed by adding: “(j) A boat that is unavoidably without way in a ship channel may use any means of propulsion to clear the channel at the approach of commercial traffic provided that, when becoming clear of the commercial traffic, the boat has not improved their position as a result of this action. A boat claiming this exception shall report the incident in writing to the protest committee within the protest time limit, with all the facts necessary to substantiate the boat’s speed and change of position during the incident.”
- 16.4 RRS 62.1 (Redress) is changed by adding: “(e) clearing a ship channel in compliance with SI 16.3 [RRS 42.3(h)].”

17 SOCIAL

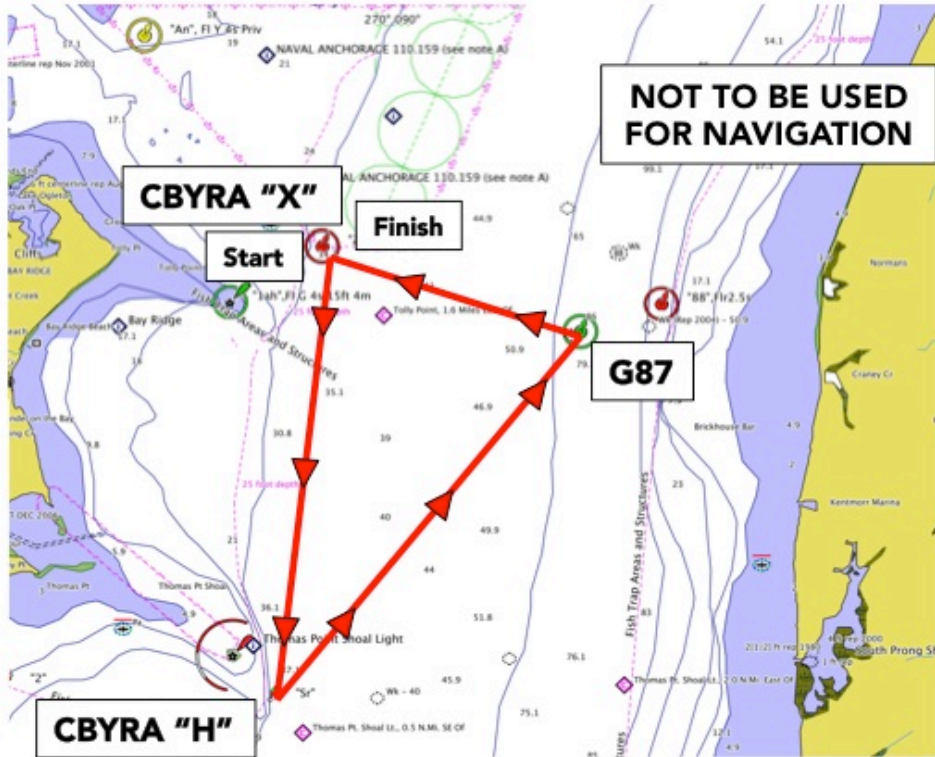
A post-race party and trophy presentation will be held at EYC, 317 First Street, Annapolis, and is open to participants and CRAB supporters. A bar featuring Mount Gay Rum and Heineken Beer will be open at 1600 hours. Food service and a live band will be from 1700-2000 hours. Entry, food, and drink tickets will be available at the party.

FIGURE 1 – COURSES for CRAB, PHRF SPIN, PHRF NON-SPIN and ONE DESIGN Classes EXCEPT for Harbor 20

Course

P

All PORT
roundings



Course

S

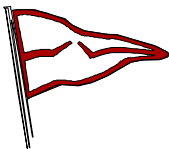
All STARBOARD
roundings



Boatyard Bar & Grill Race to Benefit CRAB

Eastport Yacht Club

August 23, 2014



ATTACHMENT A For the HARBOR 20 Class

1 THE COURSE

- 1.1 The course will be:
START – CBYRA “Y” – CBYRA “J” – G13 – FINISH
- 1.2 The marks shall be rounded in the following manner:
 CBYRA “Y” shall be kept to PORT;
 CBYRA “J” shall be kept to PORT;
 G13 shall be kept to PORT.
- 1.3 The Horn Point Shoal Mark (HP, FL W 6.0s) and the Greenbury Point Dolphin (A, FL Y 2.5s) shall be passed on the channel side.

2 MARKS

2.1 For the Harbor 20 class, the marks have the following Lat/Long coordinates.

CBYRA “X”	CBYRA “Y”	CBYRA “J”	G13	G 1SC
<u>R2, Fl 2.5s</u>	<u>R N14</u>	<u>G5, Fl 4.0s</u>	<u>G13</u>	<u>G 1SC</u>
N 38° 56.50’	N 38° 59.11’	N 38° 58.30’	N 38° 58.94’	N 38° 58.89’
W 076° 25.56’	W 076° 28.35’	W 076° 27.72’	W 076° 28.40’	W 076° 28.80’

3 THE START

- 3.1 Upon the completion of starting all **CRAB**, **PHRF**, and non-Harbor 20 one-design boats, the Race Committee Signal Boat may reposition around **CBRYA “X”** in order to set a starting line square to the course into the river.
- 3.2 The Race Committee will signal a wakeup call with multiple sounds, approximately 1 minute prior to the Warning signal.
- 3.3 The Race Committee will use a large EYC burgee as the **HARBOR 20** Warning/class flag.
- 3.4 Recalls will be signaled in accordance with RRS 29.
- 3.5 The Race Committee may attempt to notify boats identified as on the course side by announcing their sail numbers on VHF. Failure to transmit or receive such notification will not be grounds for redress. This changes RRS 62.

4 THE FINISH

- 4.1 The finish line will be between a staff displaying an orange flag on the NW corner of the EYC deck and “G 1SC” at the mouth of Spa Creek.
- 4.2 When finishing, “G 1SC” shall be left to starboard. Boats that have finished shall clear the finish area completely and not sail back through the finish line. Boats leaving Spa Creek after crossing the finish line shall pass to the north of “G 1SC.” This changes RRS 28.1.

5 TIME LIMIT

- 5.1 If no boat in the **HARBOR 20** class finishes within 2-1/2 hours of the start, the race will be abandoned.
- 5.2 Boats failing to finish within 1 hour after the first **HARBOR 20** that sails the course and finishes will be scored DNF. This changes RRS 35 and A4. Boats leaving the course without finishing shall promptly notify the race committee on VHF channel 72.

HARBOR 20 Course

