

imu '14

2014 HAWAII HIGH SCHOOL IMU INVITATIONAL REGATTA



We request your assistance in protecting the environment and keeping our venue clean. Please take a moment to review this short document.

Hawaii provides an iconic paradise of lush, green mountains, fresh, clear skies, and beautiful blue oceans. It welcomes visitors with unmatched beauty and serenity. However, like countless locations around the globe, it's threatened by environmental issues.

One of the major issues locally is ocean pollution as a result of plastics. Plastic wraps, bags, and containers litter the water. Fragments are often washed up on beaches, but most remains in the water. An island of floating plastic larger than Texas (called the "Great Pacific Garbage Patch") exists in the Pacific Ocean. This is especially problematic for marine wildlife. Fish and birds ingest the indigestible plastic, leading to starvation and death; other animals get tangled in other plastic debris. We would like to do our part by eliminating as much plastic use as possible, by preventing any plastic or other refuse from entering the ocean, and by ensuring that all recyclables are properly sorted.

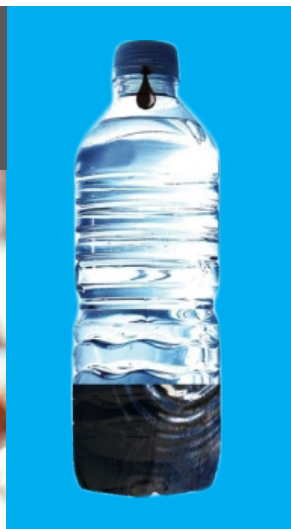
Additionally, we would like to reduce paper usage and its associated carbon footprint by using electronic documents and by minimizing printing. Please view the next page for details on how *you* can help at this regatta. We appreciate your cooperation and hope you may incorporate greener practices in your daily life.

Thank you!



IMU '14 is a *Sailors for the Sea Green Regatta* participant. Sailors for the Sea is a leading conservation organization that engages, educates, inspires and activates the sailing and boating community toward healing the ocean. Sailors for the Sea is a movement and pragmatic voice for action that offers boaters tangible opportunities to create a legacy and make a difference. Visit www.sailorsforthesea.org to learn more.

"If you fill a bottle about one-third of the way full, that is how much oil it takes to make and move your water."
-Dr. Rachel Harvey



WASTE & RECYCLING

Kaneohe Yacht Club has numerous trash and recycling bins. Please ensure that all refuse is properly sorted and disposed of. All recycling bins accept glass, metal, or plastic containers. The larger blue bins also accept paper and cardboard.



ON-WATER LUNCHES & SNACKS

Participants shall consume meals at the boat swapping area at the ends of the piers only. Bagged lunch bags may not be brought or consumed on the water. Snack bars, if necessary, may be brought on the boats but are discouraged in order to reduce stray plastic from falling into the water.

WATER BOTTLES

No disposable water bottles will be provided, and the purchase of disposable water bottles is highly discouraged. Participants should bring their own labeled reusable bottle. A very limited number of loaner bottles will be available. Kaneohe Yacht Club has water fountains and onsite tap/hose water is drinkable and clean.

PAPER USAGE

Printed Sailing Instructions (and other regatta-related documents) will be provided. For extra copies, however, it would be preferable for participants to use an electronic copy. These will be sent via e-mail.