

**Atlantic Coast Championship  
Laser Standard, Radial, and 4.7  
Hosted by SailMaine  
Portland, Maine  
August 30 – 31, 2014**

The Organizing Authority (OA) for the 2014 Laser Atlantic Coast Championship will be SailMaine.  
Event Headquarters will be located at SailMaine in Portland, Maine.



**1. RULES**

- 1.1. The 2014 Laser Atlantic Coast Championship will be governed by the *rules* as defined in the Racing Rules of Sailing (RRS).
- 1.2. The class rules for the purposes of the definition of *rules* will be the rules of the International Laser Class Association (ILCA).

**2. ADVERTISING**

- 2.1. In accordance with ISAF Regulation 20, boats may be required to display advertising chosen and supplied by the OA.

**3. ELIGIBILITY AND ENTRY**

- 3.1. Laser, Laser Radial, and Laser 4.7 competitors who are members of the ILCA-NA or their respective national Laser Class Association may enter by completing registration with the OA via the event website: <http://www.regattanetwork.com/event/8922>
- 3.2. A minimum of five entries in each division (Laser, Laser Radial, Laser 4.7) are necessary to constitute a class. If such quantities are not reached by 08/16/2014 then that class may be canceled for the event.

**4. FEES**

- 4.1. The entry fee for registrations completed by 1700 on 08/16/2014 will be \$80 for all classes.
- 4.2. Entries received after the time listed in NOR 4.1 will be subject to a late fee of \$20.
- 4.3. The entry fee includes continental breakfast on both days of racing and a dinner on Saturday night. Lunch will **not** be provided for competitors.
- 4.4. Breakfast and dinner will be available for purchase by non-competitors.

**5. SCHEDULE**

- 5.1. The schedule for the event is as follows:

**Friday, August 29**

1400           Boats may arrive at SailMaine after this time  
1600 – 2000   On-site registration and check-in

**Saturday, August 30   RACE DAY ONE**

0800 – 0900   On-site registration, check-in, and continental breakfast  
0930           Skippers' Meeting  
1100           Initial Warning Signal  
After Racing   Social Activities, dinner to follow (at SailMaine)

**Sunday, August 31    RACE DAY TWO**

0830           Continental breakfast  
1000           Initial Warning Signal  
1400           No initial Warning Signal will be made after this time  
After Racing   Social activities and awards

## **6. HOUSING**

6.1. Housing for competitors will not be provided. A list of hotels can be found at the end of this document.

## **7. SAILING INSTRUCTIONS**

7.1. Sailing Instructions will be available online no later than 08/16/2014 and at check-in/registration.

## **8. COURSES & RACING AREA**

8.1. Racing will take place in the waters adjacent to the Eastern Promenade in the Mackworth Circle. The attached map shows the location of SailMaine (Event Headquarters) and the anticipated racing area.

8.2. Courses to be sailed will be the standard ILCA-NA trapezoid as described in the LICA-NA Regatta Guidelines.

## **9. SCORING**

9.1. A boat's series score shall be the total of all her race scores except that, if six (6) or more races are completed, a boat's series score shall be the total of all her race scores excluding her worst score. When eleven (11) or more races are completed, a boat's series score shall be the total of all her race scores excluding her two (2) worst scores. This changes rule A4.

9.2. Three races are necessary to constitute a series.

## **10. TRAILER STORAGE**

10.1. Trailer storage is available in the SailMaine parking lot. The attached map shows the location of SailMaine relative to the racing area.

## **11. SUPPORT BOATS**

11.1. All support/coach boats shall register with the Organizing Authority and may be required to fly identification.

11.2. All support/coach boats shall be prepared to assist in the event of an emergency and, therefore, must carry a VHF radio capable of making and receiving radio transmissions.

## **12. PRIZES**

12.1. Prizes will be awarded to the top five finishers in each Laser and Laser Radial classes.

12.2. Prizes will be awarded to the top three places in the 4.7 class.

12.3. Additional prizes may be awarded and may be based on criteria other than scores.

## **13. DISCLAIMER OF LIABILITY**

13.1. Competitors participate in the regatta entirely at their own risk, see rule 4, Decision to Race. The Organizing Authority, City of Portland, SailMaine, nor any of their volunteers, sponsors, or vendors, will not accept any liability for material damage or personal injury or death sustained in conjunction with or prior to, during, or after the regatta.

## **14. CHARTER INFORMATION**

14.1. There will be no charter boats available through this venue.

## **15. FURTHER INFORMATION**

15.1. For further information:

Gerry Tiernan

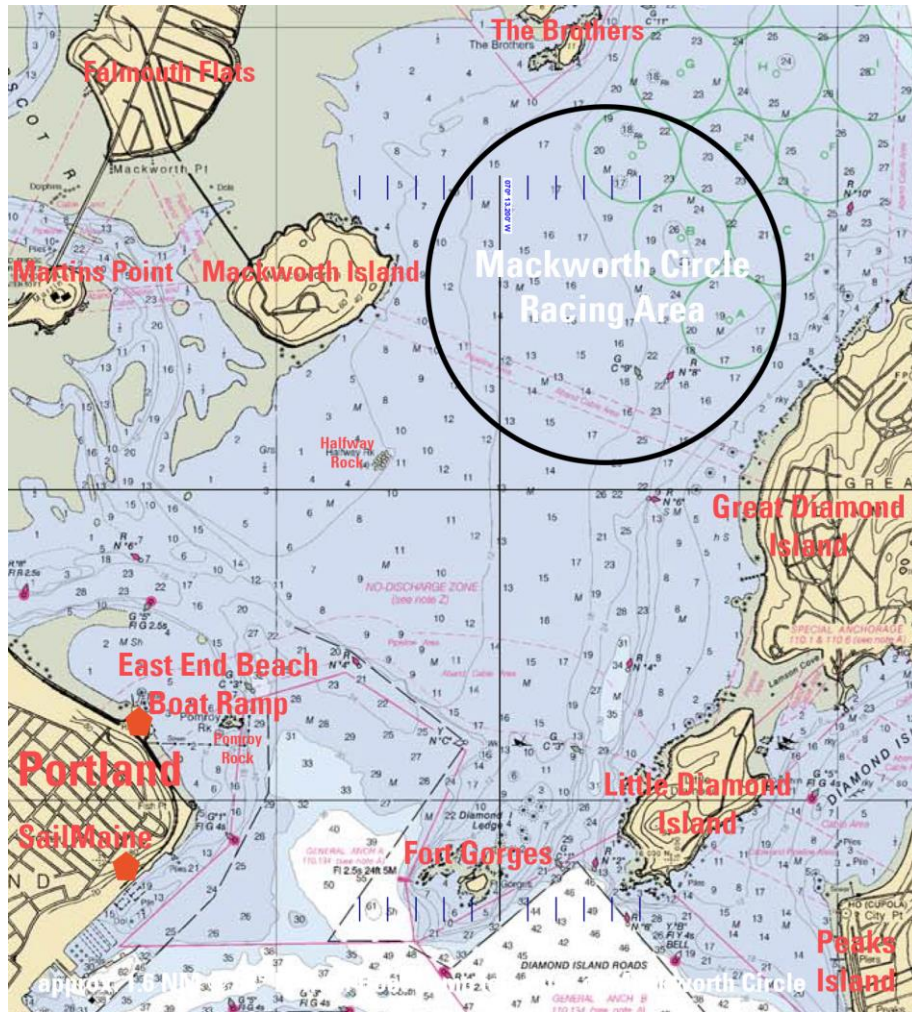
SailMaine

58 Fore Street

Portland, ME 04101

207-772-7245

[gerry.tiernan@sailmaine.org](mailto:gerry.tiernan@sailmaine.org)



**Residence Inn Portland****Downtown/Waterfront**

145 Fore St.

207-761-1660

[www.residenceinndowntownportland.com](http://www.residenceinndowntownportland.com)

From SailMaine HQ – .19 ml.

**Hampton Inn Portland Downtown-****Waterfront**

209 Fore Street

1-800-Hampton

<http://hamptoninn3.hilton.com>

From SailMaine HQ – 0.3 mi.

**Hilton Garden Inn**

65 Commercial St.

800-782-9444

<http://hiltongardeninn3.hilton.com>

From SailMaine HQ – .54 ml.

**Portland Regency Hotel**

20 Milk St.

800-727-3436

[www.theregency.com](http://www.theregency.com)

From SailMaine HQ – .65 ml.

**Portland Harbor Hotel**

468 Fore St.

888-798-9090

[www.portlandharborhotel.com](http://www.portlandharborhotel.com)

From SailMaine HQ – .76 ml.

**Holiday Inn by the Bay**

88 Spring St.

800-345-5050

[www.innbythebay.com](http://www.innbythebay.com)

From SailMaine HQ – 1.01 ml.

**La Quinta Inn & Suites**

340 Park Ave.

207-871-0611

<http://www.lq.com/lq/properties/propertyProfile.do?propId=2049>

From SailMaine HQ – 2.49 ml.

**Embassy Suites Hotel**

1050 Westbrook St.

800-753-8767

<http://embassysuites3.hilton.com>

From SailMaine HQ – 5.32 ml.