

Single Hand & Mixed Doubles Regattas

Galveston Bay Texas

Aug. 16 & 17, 2014

Galveston Bay Cruising Association

1500 Marina Bay Dr. Suite 1592 • Building #113B • Clear Lake Shores, TX

Sailing Instructions

1. RULES

The regatta will be governed by the *rules* as defined in the current 2013-2016 *Racing Rules of Sailing*, the Notice of Race, any OD Class Rules and these Sailing Instructions.

The following RRS are modified herein:

Sailing Instruction 6.2 modifies RRS 62.1(a)

Sailing Instruction 9.2 & 9.3 modifies RRS 26

Sailing Instruction 13 modifies RRS 61

Sailing Instruction 15 modifies RRS 35

2. NOTICES TO COMPETITORS

Notices to Competitors will be posted at:

https://www.regattanetwork.com/clubmgmt/applet_club_events.php?CLUB_ID=162 .

Notices regarding Protests will also be posted on the door of the GBCA office.

3. CHANGES TO THE SAILING INSTRUCTIONS

Any change to the sailing instructions or notice of race will be posted before 0800 on the day it will take effect.

4. WARNING SIGNAL

4.1 The start of the first race of the Single Hand Regatta on Saturday will be no earlier than 1300. The start of the first race of the Mixed Doubles Regatta on Sunday will be no earlier than 1300. Subsequent races for each class will follow at the top of the hour after the end of the previous race.

5. Racing Area

The racing area will be in the part of Galveston Bay between Seabrook and the Houston Ship Channel, and between San Leon and the Bayport Ship Channel. Boats shall not enter the Houston Ship Channel or Bayport Ship Channel while *racing*. The Houston Ship Channel and the Bayport Ship Channel are designated as obstructions.

6. RADIO COMMUNICATION

6.1 Radio communication will be conducted on VHF channel 69.

6.2 In addition to signaling Individual Recalls in accordance with RRS 29.1, as a courtesy, the Race Committee will attempt to broadcast the names or sail numbers of boats that have started early. Failure to make such a broadcast, failure of a boat to receive that broadcast, a boat's order in that broadcast, or the promptness of that broadcast will not be grounds for redress. This modifies RRS 62.1(a).

7. CHECK-IN PROCEDURE

All yachts intending to race shall check in with the Race Committee on VHF Channel 69 prior to their warning signal.

8. START LINE / FINISH LINE

The Start Line / Finish Line will be approximately 0.6nm south of Clear Lake channel marker 1, between an Orange Flag displayed from the Signal Boat and the course side of a nearby Orange Mark.

9. THE START

9.1 The starting line will be between the staff displaying an orange flag on the Signal Boat on the starboard end and the course side edge of a nearby Mark at the port end of the line.

9.2 This is a reverse start (pursuit) race, with the (GPS) start time for each boat based on its PHRF rating following the 1300 hours. See the accompanying Appendix B for assigned boat start times. This modifies RRS 26

9.3 The Race Committee will give no additional starting signals, except to monitor and call individual boats OCS prior to their assigned start time with sound and the individual recall flag. This modifies RRS 26. Any boat(s) signaled as OCS at their respective starting *time* shall thereafter sail from the course side across the starting line or one of its extensions to the pre-start side before *starting*.

9.4 The signal boat *may* broadcast occasional time checks on VHF 69 until all boats have started.

10. COURSE and MARKS

10.1 Courses will be signaled by a numeral pennant correlating with the course diagrams described in Appendix A. The approximated heading and distance to each mark are also described.

10.2 Start will be Pursuit style according PHRF rating as described in Appendix B for the primary race. If a second race is attempted, the start will be according to the same schedule with adjustment to the next top of the hour.

10.3 Fixed mark courses will use marks "E", "H", "M54" and two 8' Tetrahedrons dropped, one in front of the Todville Road shoreline and the second in front of the San Leon shoreline. Approximate coordinates and description of the marks are:

Mark	Approximate Coordinate	Description
Start/Finish Gate	N 29° 32.567' W 094° 59.545'	<i>RC Signal boat and a nearby orange Tetrahedron</i>
E	N 29° 35.787' W 094° 56.935'	<i>The Low Range Marker (Upper Range "A") in Galveston Bay. The mark is an orange and white structure near Houston Ship Channel Marker #73, 0.23 nm NNW of the old low range.</i>
H	N 29° 33.255' W 094° 56.542'	<i>A platform located in Galveston bay, approximately 1.3 nm WSW of the Houston Ship Channel marker #65.</i>
M54	N 29° 30.814' W 094° 54.963'	<i>Galveston Shellfish Harvesting Boundary Marker</i>
Todville Rd beach Tet	N 29° 34.500' W 094° 59.300'	<i>An anchored 8' Tetrahedron</i>
San Leon beach Tet	N 29° 31.570' W 094° 57.400'	<i>An anchored 8' Tetrahedron</i>

Boats shall not enter the Houston Ship Channel. The Houston Ship Channel is designated as an Obstruction. A chart showing the relative position of the marks will be available as Appendix A. This chart is schematic in nature and is not to be used for navigation.

11. THE FINISH

The Finish Line will be between a staff displaying an orange flag on the Signal Boat on the port end and the course side edge of the starboard end Orange Mark.

12. Shorten Course

If the Race Committee displays the “S” code flag for weather reasons, all classes will sail the shortened course. The race committee is prepared to recalculate the adjustments for the shortened course.

13. PROTESTS

The protest and redress procedures for this regatta will utilize basic elements of the new RRS Appendix T, a US Sailing Prescription. Protests shall be communicated to the Race Committee before leaving the race area and must be filed in writing within 2 hours of the last boat finishing. This modifies RRS 61. Protests shall be filed at the GBCA office.

14. SAFETY and WITHDRAWING PROCEDURES

14.1 Attention is called to RRS 4: Decision to Race, “The responsibility for a boat’s decision to participate in a race or to continue *racing* is hers alone.”

14.2 The Race Committee places high priority on accounting for every yacht participating in a race. It is imperative that any yacht withdrawing from a race makes its best and most persistent efforts to notify other parties of such withdrawal at the earliest opportunity. Withdrawing yachts should make every effort to contact the Race Committee and/or other nearby yachts to communicate the withdrawal via VHF channel 69. . If radio communication is unavailable, call the Race Committee phone number: 713.823.1577 and leave a message. Proper reporting of a withdrawal should include; yacht name, sail number and skipper's name.

14.3 Single Handed Regatta – Code flag “Y” **SHALL BE** displayed

14.4 Mixed Doubles Regatta – Code flag “Y” **MAY BE** displayed from the RC Signal boat in accordance with the Racing Rules of Sailing 27.1.

15. TIME LIMIT

The time limit is 1900. Any boat that does not finish by the time limit will be scored DNF. This modifies RRS 35.

16. SCORING

The Race Committee will score the race with reverse start (pursuit) style race using the performance handicapping racing formula, time on distance, for each yacht, as determined by the Race Committee.

17. SCHEDULE OF EVENTS

17.1 A Competitors Briefing for both events will be held at the GBCA office at 0900 Saturday, August 16, 2014.

17.2 These are single day regattas, therefore, as many races as practical will be run during each regatta.

Subsequent races for each class will be started as soon as possible after the class has finished the prior race. The warning signal for the first race of the regatta will not be before 1300 hours Saturday and Sunday, August 16 & 17, 2014.

17.3 A Recovery Party and awards presentation, following the Single Hand Regatta, will be held following the conclusion of the last race on Saturday at Cabo's Classic Cafe bar on Clear Lake.

17.4 Refreshments and trophy presentations for the Mixed Doubles Regatta will be on Sunday, August 18, 2013 at the GBCA clubhouse following the conclusion of the last race.

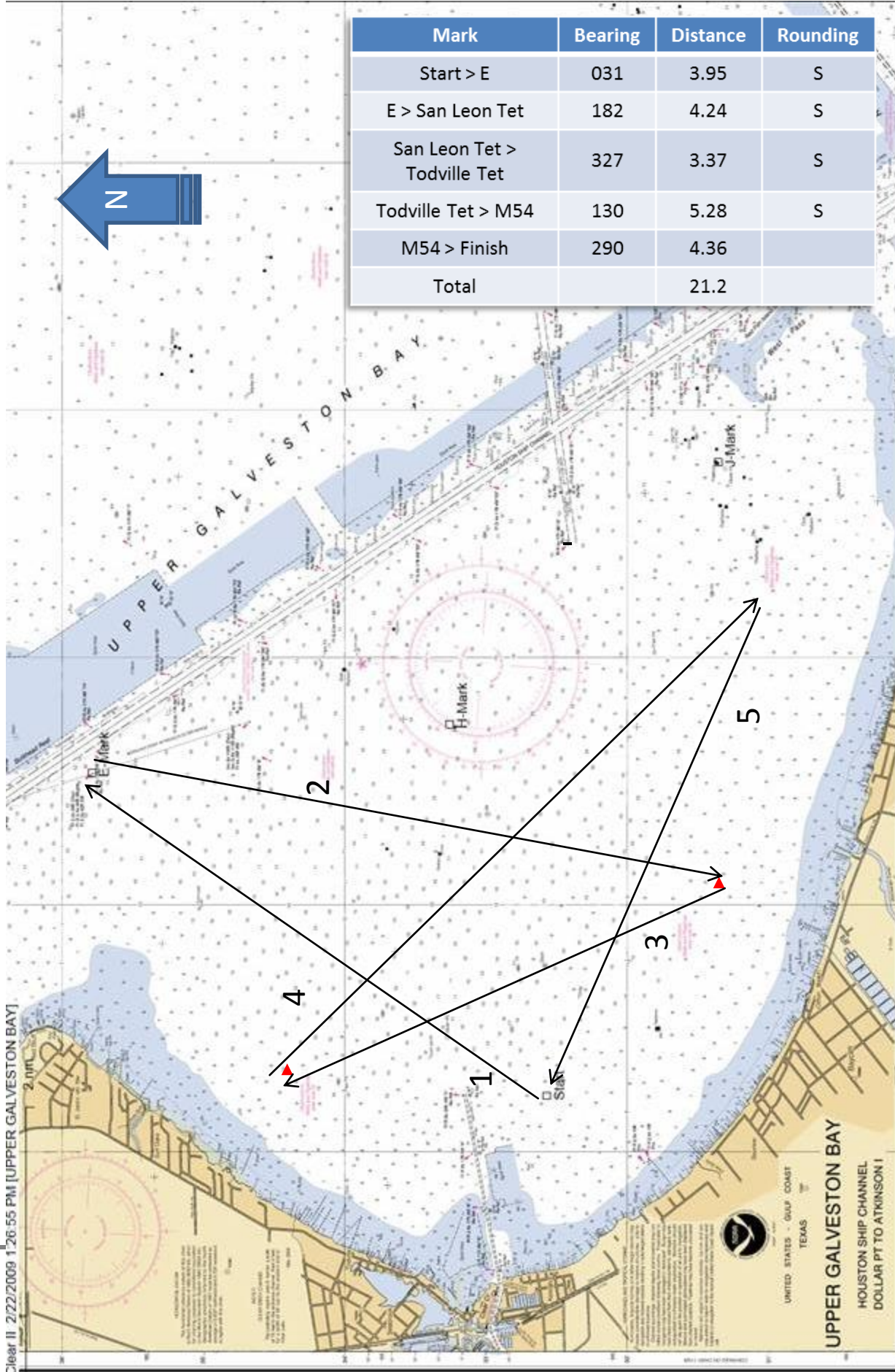
18. SPECIAL INSTRUCTIONS

18.1 In the Single Hand regatta, only one person shall be allowed on a yacht while racing.

18.2 In the Mixed Doubles regatta, each yacht shall be allowed only two persons aboard while racing, one male and one female.

18.3 Attention is called to RRS 52 – MANUAL POWER: “A boat’s standing rigging, running rigging, spars and movable hull appendages shall be adjusted and operated only by the power provided by the crew.”

Appendix A - Course 1 "Star"



Clear II 2/22/2009 1:26:55 PM [UPPER GALVESTON BAY]

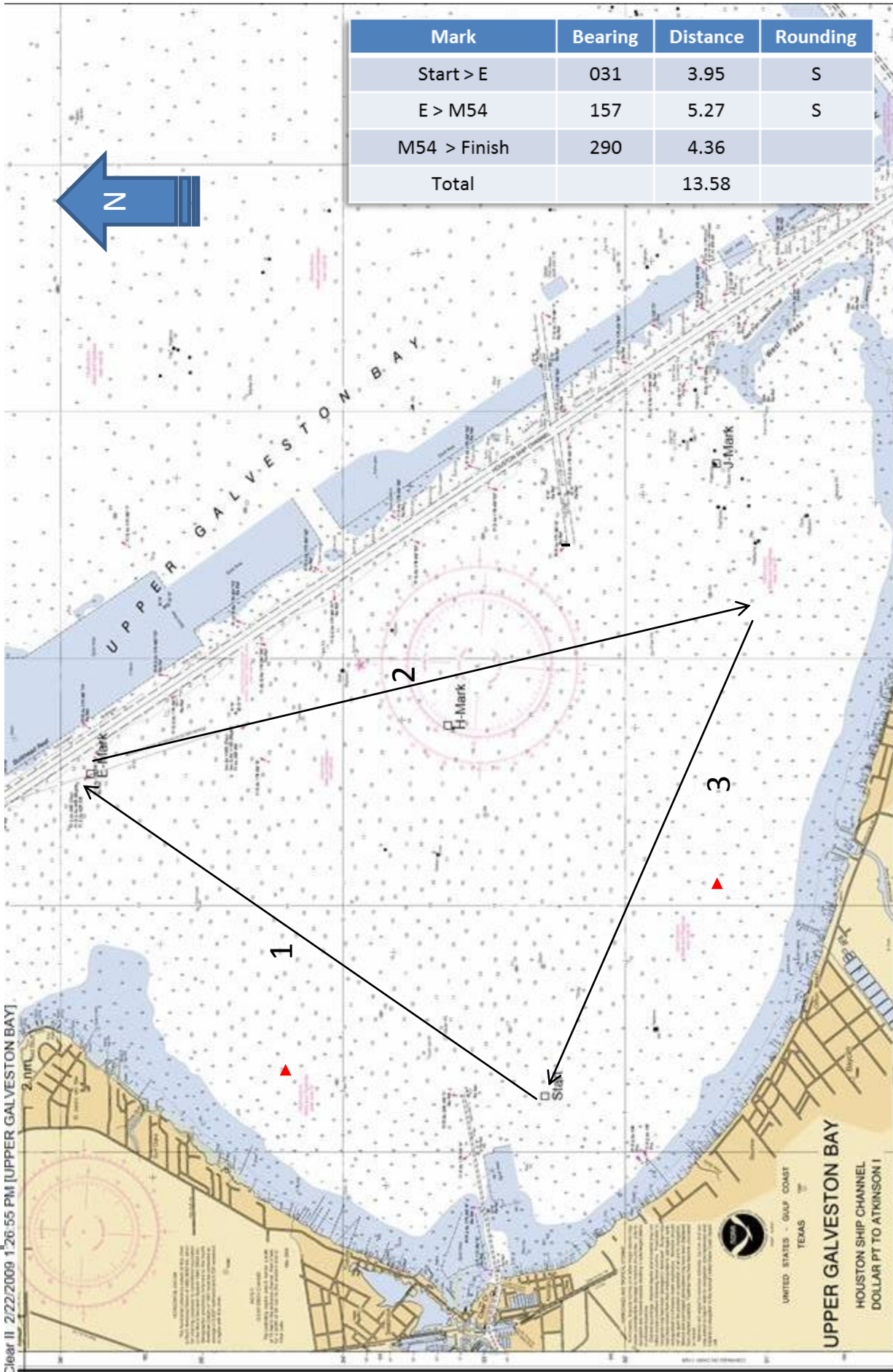
UPPER GALVESTON BAY
HOUSTON SHIP CHANNEL
DOLLAR PT TO ATKINSON I



PHRF	Start	PHRF	Start	PHRF	Start	PHRF	Start	PHRF	Start	PHRF	Start
284	13:00:00	239	13:15:54	194	13:31:48	149	13:47:42	104	14:03:36	59	14:19:30
283	13:00:21	238	13:16:15	193	13:32:09	148	13:48:03	103	14:03:57	58	14:19:51
282	13:00:42	237	13:16:36	192	13:32:30	147	13:48:24	102	14:04:18	57	14:20:12
281	13:01:04	236	13:16:58	191	13:32:52	146	13:48:46	101	14:04:40	56	14:20:34
280	13:01:25	235	13:17:19	190	13:33:13	145	13:49:07	100	14:05:01	55	14:20:55
279	13:01:46	234	13:17:40	189	13:33:34	144	13:49:28	99	14:05:22	54	14:21:16
278	13:02:07	233	13:18:01	188	13:33:55	143	13:49:49	98	14:05:43	53	14:21:37
277	13:02:28	232	13:18:22	187	13:34:16	142	13:50:10	97	14:06:04	52	14:21:58
276	13:02:50	231	13:18:44	186	13:34:38	141	13:50:32	96	14:06:26	51	14:22:20
275	13:03:11	230	13:19:05	185	13:34:59	140	13:50:53	95	14:06:47	50	14:22:41
274	13:03:32	229	13:19:26	184	13:35:20	139	13:51:14	94	14:07:08	49	14:23:02
273	13:03:53	228	13:19:47	183	13:35:41	138	13:51:35	93	14:07:29	48	14:23:23
272	13:04:14	227	13:20:08	182	13:36:02	137	13:51:56	92	14:07:50	47	14:23:44
271	13:04:36	226	13:20:30	181	13:36:24	136	13:52:18	91	14:08:12	46	14:24:06
270	13:04:57	225	13:20:51	180	13:36:45	135	13:52:39	90	14:08:33	45	14:24:27
269	13:05:18	224	13:21:12	179	13:37:06	134	13:53:00	89	14:08:54	44	14:24:48
268	13:05:39	223	13:21:33	178	13:37:27	133	13:53:21	88	14:09:15	43	14:25:09
267	13:06:00	222	13:21:54	177	13:37:48	132	13:53:42	87	14:09:36	42	14:25:30
266	13:06:22	221	13:22:16	176	13:38:10	131	13:54:04	86	14:09:58	41	14:25:52
265	13:06:43	220	13:22:37	175	13:38:31	130	13:54:25	85	14:10:19	40	14:26:13
264	13:07:04	219	13:22:58	174	13:38:52	129	13:54:46	84	14:10:40	39	14:26:34
263	13:07:25	218	13:23:19	173	13:39:13	128	13:55:07	83	14:11:01	38	14:26:55
262	13:07:46	217	13:23:40	172	13:39:34	127	13:55:28	82	14:11:22	37	14:27:16
261	13:08:08	216	13:24:02	171	13:39:56	126	13:55:50	81	14:11:44	36	14:27:38
260	13:08:29	215	13:24:23	170	13:40:17	125	13:56:11	80	14:12:05	35	14:27:59
259	13:08:50	214	13:24:44	169	13:40:38	124	13:56:32	79	14:12:26	34	14:28:20
258	13:09:11	213	13:25:05	168	13:40:59	123	13:56:53	78	14:12:47	33	14:28:41
257	13:09:32	212	13:25:26	167	13:41:20	122	13:57:14	77	14:13:08	32	14:29:02
256	13:09:54	211	13:25:48	166	13:41:42	121	13:57:36	76	14:13:30	31	14:29:24
255	13:10:15	210	13:26:09	165	13:42:03	120	13:57:57	75	14:13:51	30	14:29:45
254	13:10:36	209	13:26:30	164	13:42:24	119	13:58:18	74	14:14:12	29	14:30:06
253	13:10:57	208	13:26:51	163	13:42:45	118	13:58:39	73	14:14:33	28	14:30:27
252	13:11:18	207	13:27:12	162	13:43:06	117	13:59:00	72	14:14:54	27	14:30:48
251	13:11:40	206	13:27:34	161	13:43:28	116	13:59:22	71	14:15:16	26	14:31:10
250	13:12:01	205	13:27:55	160	13:43:49	115	13:59:43	70	14:15:37	25	14:31:31
249	13:12:22	204	13:28:16	159	13:44:10	114	14:00:04	69	14:15:58	24	14:31:52
248	13:12:43	203	13:28:37	158	13:44:31	113	14:00:25	68	14:16:19	23	14:32:13
247	13:13:04	202	13:28:58	157	13:44:52	112	14:00:46	67	14:16:40	22	14:32:34
246	13:13:26	201	13:29:20	156	13:45:14	111	14:01:08	66	14:17:02	21	14:32:56
245	13:13:47	200	13:29:41	155	13:45:35	110	14:01:29	65	14:17:23	20	14:33:17
244	13:14:08	199	13:30:02	154	13:45:56	109	14:01:50	64	14:17:44	19	14:33:38
243	13:14:29	198	13:30:23	153	13:46:17	108	14:02:11	63	14:18:05	18	14:33:59
242	13:14:50	197	13:30:44	152	13:46:38	107	14:02:32	62	14:18:26	17	14:34:20
241	13:15:12	196	13:31:06	151	13:47:00	106	14:02:54	61	14:18:48	16	14:34:42
240	13:15:33	195	13:31:27	150	13:47:21	105	14:03:15	60	14:19:09	15	14:35:03

Appendix A - Course 2 "Rum"

Mark	Bearing	Distance	Rounding
Start > E	031	3.95	S
E > M54	157	5.27	S
M54 > Finish	290	4.36	
Total		13.58	



Clear II 2/22/2009 1:26:55 PM [UPPER GALVESTON BAY]

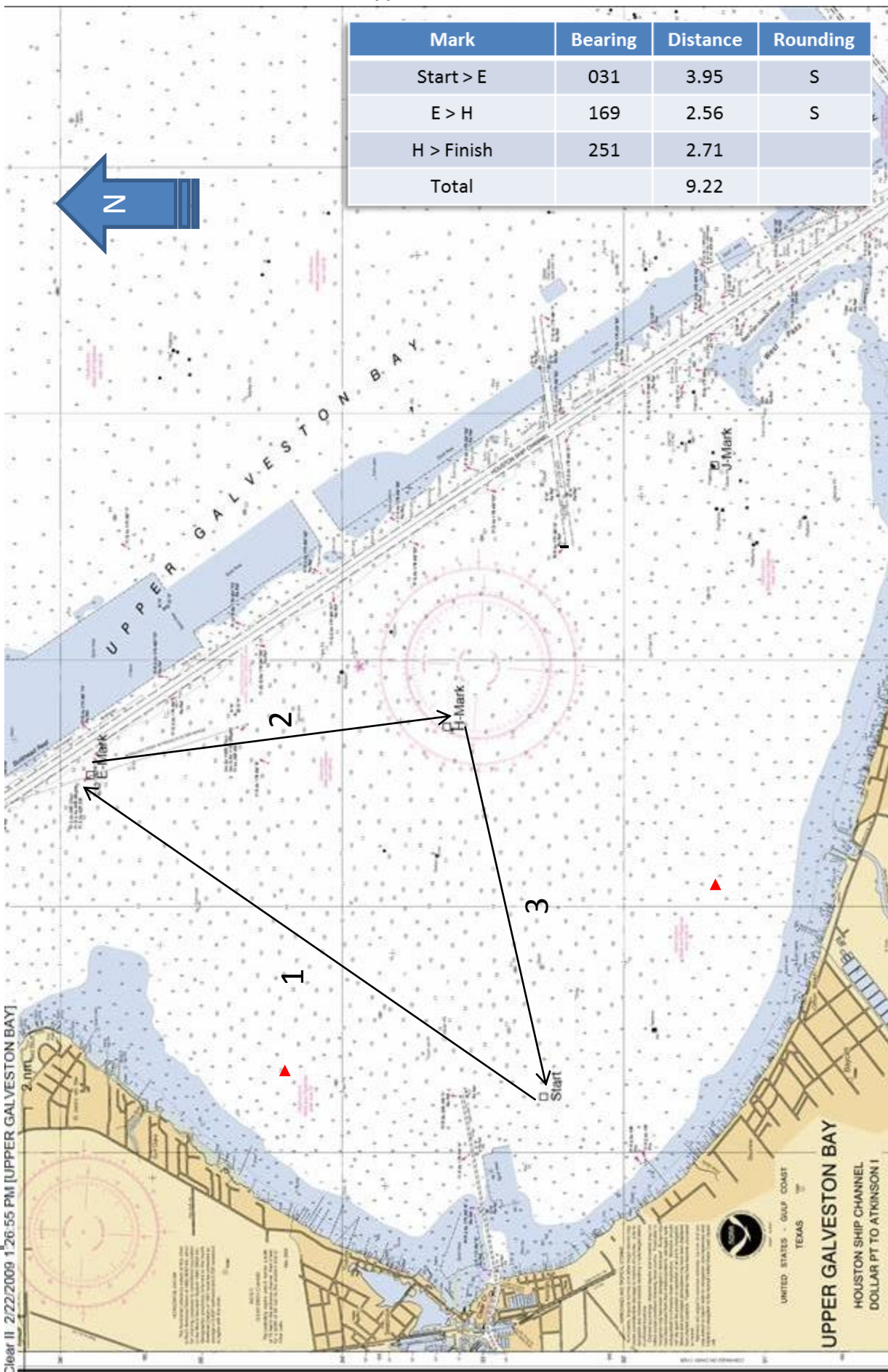
UNITED STATES - GULF COAST
TEXAS
UPPER GALVESTON BAY
HOUSTON SHIP CHANNEL
DOLLAR PT TO ATKINSON I

Appendix B - Course 2 "Rum"

PHRF	Start	PHRF	Start	PHRF	Start	PHRF	Start	PHRF	Start	PHRF	Start
284	13:00:00	239	13:10:11	194	13:20:22	149	13:30:33	104	13:40:44	59	13:50:55
283	13:00:14	238	13:10:25	193	13:20:36	148	13:30:47	103	13:40:58	58	13:51:09
282	13:00:27	237	13:10:38	192	13:20:49	147	13:31:00	102	13:41:12	57	13:51:23
281	13:00:41	236	13:10:52	191	13:21:03	146	13:31:14	101	13:41:25	56	13:51:36
280	13:00:54	235	13:11:05	190	13:21:17	145	13:31:28	100	13:41:39	55	13:51:50
279	13:01:08	234	13:11:19	189	13:21:30	144	13:31:41	99	13:41:52	54	13:52:03
278	13:01:21	233	13:11:33	188	13:21:44	143	13:31:55	98	13:42:06	53	13:52:17
277	13:01:35	232	13:11:46	187	13:21:57	142	13:32:08	97	13:42:19	52	13:52:31
276	13:01:49	231	13:12:00	186	13:22:11	141	13:32:22	96	13:42:33	51	13:52:44
275	13:02:02	230	13:12:13	185	13:22:24	140	13:32:36	95	13:42:47	50	13:52:58
274	13:02:16	229	13:12:27	184	13:22:38	139	13:32:49	94	13:43:00	49	13:53:11
273	13:02:29	228	13:12:40	183	13:22:52	138	13:33:03	93	13:43:14	48	13:53:25
272	13:02:43	227	13:12:54	182	13:23:05	137	13:33:16	92	13:43:27	47	13:53:38
271	13:02:57	226	13:13:08	181	13:23:19	136	13:33:30	91	13:43:41	46	13:53:52
270	13:03:10	225	13:13:21	180	13:23:32	135	13:33:43	90	13:43:55	45	13:54:06
269	13:03:24	224	13:13:35	179	13:23:46	134	13:33:57	89	13:44:08	44	13:54:19
268	13:03:37	223	13:13:48	178	13:23:59	133	13:34:11	88	13:44:22	43	13:54:33
267	13:03:51	222	13:14:02	177	13:24:13	132	13:34:24	87	13:44:35	42	13:54:46
266	13:04:04	221	13:14:16	176	13:24:27	131	13:34:38	86	13:44:49	41	13:55:00
265	13:04:18	220	13:14:29	175	13:24:40	130	13:34:51	85	13:45:02	40	13:55:14
264	13:04:32	219	13:14:43	174	13:24:54	129	13:35:05	84	13:45:16	39	13:55:27
263	13:04:45	218	13:14:56	173	13:25:07	128	13:35:18	83	13:45:30	38	13:55:41
262	13:04:59	217	13:15:10	172	13:25:21	127	13:35:32	82	13:45:43	37	13:55:54
261	13:05:12	216	13:15:23	171	13:25:35	126	13:35:46	81	13:45:57	36	13:56:08
260	13:05:26	215	13:15:37	170	13:25:48	125	13:35:59	80	13:46:10	35	13:56:21
259	13:05:39	214	13:15:51	169	13:26:02	124	13:36:13	79	13:46:24	34	13:56:35
258	13:05:53	213	13:16:04	168	13:26:15	123	13:36:26	78	13:46:37	33	13:56:49
257	13:06:07	212	13:16:18	167	13:26:29	122	13:36:40	77	13:46:51	32	13:57:02
256	13:06:20	211	13:16:31	166	13:26:42	121	13:36:54	76	13:47:05	31	13:57:16
255	13:06:34	210	13:16:45	165	13:26:56	120	13:37:07	75	13:47:18	30	13:57:29
254	13:06:47	209	13:16:58	164	13:27:10	119	13:37:21	74	13:47:32	29	13:57:43
253	13:07:01	208	13:17:12	163	13:27:23	118	13:37:34	73	13:47:45	28	13:57:56
252	13:07:15	207	13:17:26	162	13:27:37	117	13:37:48	72	13:47:59	27	13:58:10
251	13:07:28	206	13:17:39	161	13:27:50	116	13:38:01	71	13:48:13	26	13:58:24
250	13:07:42	205	13:17:53	160	13:28:04	115	13:38:15	70	13:48:26	25	13:58:37
249	13:07:55	204	13:18:06	159	13:28:17	114	13:38:29	69	13:48:40	24	13:58:51
248	13:08:09	203	13:18:20	158	13:28:31	113	13:38:42	68	13:48:53	23	13:59:04
247	13:08:22	202	13:18:34	157	13:28:45	112	13:38:56	67	13:49:07	22	13:59:18
246	13:08:36	201	13:18:47	156	13:28:58	111	13:39:09	66	13:49:20	21	13:59:32
245	13:08:50	200	13:19:01	155	13:29:12	110	13:39:23	65	13:49:34	20	13:59:45
244	13:09:03	199	13:19:14	154	13:29:25	109	13:39:36	64	13:49:48	19	13:59:59
243	13:09:17	198	13:19:28	153	13:29:39	108	13:39:50	63	13:50:01	18	14:00:12
242	13:09:30	197	13:19:41	152	13:29:53	107	13:40:04	62	13:50:15	17	14:00:26
241	13:09:44	196	13:19:55	151	13:30:06	106	13:40:17	61	13:50:28	16	14:00:39
240	13:09:58	195	13:20:09	150	13:30:20	105	13:40:31	60	13:50:42	15	14:00:53

Appendix A - Course 3 "Icicle"

Mark	Bearing	Distance	Rounding
Start > E	031	3.95	S
E > H	169	2.56	S
H > Finish	251	2.71	
Total		9.22	



Appendix B - Course 3 "Icicle"

PHRF	Start	PHRF	Start	PHRF	Start	PHRF	Start	PHRF	Start	PHRF	Start
284	13:00:00	239	13:06:55	194	13:13:50	149	13:20:45	104	13:27:40	59	13:34:34
283	13:00:09	238	13:07:04	193	13:13:59	148	13:20:54	103	13:27:49	58	13:34:44
282	13:00:18	237	13:07:13	192	13:14:08	147	13:21:03	102	13:27:58	57	13:34:53
281	13:00:28	236	13:07:23	191	13:14:17	146	13:21:12	101	13:28:07	56	13:35:02
280	13:00:37	235	13:07:32	190	13:14:27	145	13:21:22	100	13:28:16	55	13:35:11
279	13:00:46	234	13:07:41	189	13:14:36	144	13:21:31	99	13:28:26	54	13:35:21
278	13:00:55	233	13:07:50	188	13:14:45	143	13:21:40	98	13:28:35	53	13:35:30
277	13:01:05	232	13:07:59	187	13:14:54	142	13:21:49	97	13:28:44	52	13:35:39
276	13:01:14	231	13:08:09	186	13:15:04	141	13:21:58	96	13:28:53	51	13:35:48
275	13:01:23	230	13:08:18	185	13:15:13	140	13:22:08	95	13:29:03	50	13:35:57
274	13:01:32	229	13:08:27	184	13:15:22	139	13:22:17	94	13:29:12	49	13:36:07
273	13:01:41	228	13:08:36	183	13:15:31	138	13:22:26	93	13:29:21	48	13:36:16
272	13:01:51	227	13:08:46	182	13:15:40	137	13:22:35	92	13:29:30	47	13:36:25
271	13:02:00	226	13:08:55	181	13:15:50	136	13:22:45	91	13:29:39	46	13:36:34
270	13:02:09	225	13:09:04	180	13:15:59	135	13:22:54	90	13:29:49	45	13:36:44
269	13:02:18	224	13:09:13	179	13:16:08	134	13:23:03	89	13:29:58	44	13:36:53
268	13:02:28	223	13:09:22	178	13:16:17	133	13:23:12	88	13:30:07	43	13:37:02
267	13:02:37	222	13:09:32	177	13:16:27	132	13:23:21	87	13:30:16	42	13:37:11
266	13:02:46	221	13:09:41	176	13:16:36	131	13:23:31	86	13:30:26	41	13:37:20
265	13:02:55	220	13:09:50	175	13:16:45	130	13:23:40	85	13:30:35	40	13:37:30
264	13:03:04	219	13:09:59	174	13:16:54	129	13:23:49	84	13:30:44	39	13:37:39
263	13:03:14	218	13:10:09	173	13:17:03	128	13:23:58	83	13:30:53	38	13:37:48
262	13:03:23	217	13:10:18	172	13:17:13	127	13:24:08	82	13:31:02	37	13:37:57
261	13:03:32	216	13:10:27	171	13:17:22	126	13:24:17	81	13:31:12	36	13:38:07
260	13:03:41	215	13:10:36	170	13:17:31	125	13:24:26	80	13:31:21	35	13:38:16
259	13:03:50	214	13:10:45	169	13:17:40	124	13:24:35	79	13:31:30	34	13:38:25
258	13:04:00	213	13:10:55	168	13:17:50	123	13:24:44	78	13:31:39	33	13:38:34
257	13:04:09	212	13:11:04	167	13:17:59	122	13:24:54	77	13:31:49	32	13:38:43
256	13:04:18	211	13:11:13	166	13:18:08	121	13:25:03	76	13:31:58	31	13:38:53
255	13:04:27	210	13:11:22	165	13:18:17	120	13:25:12	75	13:32:07	30	13:39:02
254	13:04:37	209	13:11:31	164	13:18:26	119	13:25:21	74	13:32:16	29	13:39:11
253	13:04:46	208	13:11:41	163	13:18:36	118	13:25:31	73	13:32:25	28	13:39:20
252	13:04:55	207	13:11:50	162	13:18:45	117	13:25:40	72	13:32:35	27	13:39:30
251	13:05:04	206	13:11:59	161	13:18:54	116	13:25:49	71	13:32:44	26	13:39:39
250	13:05:13	205	13:12:08	160	13:19:03	115	13:25:58	70	13:32:53	25	13:39:48
249	13:05:23	204	13:12:18	159	13:19:12	114	13:26:07	69	13:33:02	24	13:39:57
248	13:05:32	203	13:12:27	158	13:19:22	113	13:26:17	68	13:33:12	23	13:40:06
247	13:05:41	202	13:12:36	157	13:19:31	112	13:26:26	67	13:33:21	22	13:40:16
246	13:05:50	201	13:12:45	156	13:19:40	111	13:26:35	66	13:33:30	21	13:40:25
245	13:06:00	200	13:12:54	155	13:19:49	110	13:26:44	65	13:33:39	20	13:40:34
244	13:06:09	199	13:13:04	154	13:19:59	109	13:26:53	64	13:33:48	19	13:40:43
243	13:06:18	198	13:13:13	153	13:20:08	108	13:27:03	63	13:33:58	18	13:40:53
242	13:06:27	197	13:13:22	152	13:20:17	107	13:27:12	62	13:34:07	17	13:41:02
241	13:06:36	196	13:13:31	151	13:20:26	106	13:27:21	61	13:34:16	16	13:41:11
240	13:06:46	195	13:13:41	150	13:20:35	105	13:27:30	60	13:34:25	15	13:41:20