



# One Design Midwinter Regatta

March 20-22, 2015

## Sailing Instructions

### 1 RULES

The regatta will be governed by the *rules* as defined in *The Racing Rules of Sailing*. If there is a conflict between the NOR and the Sailing Instructions, the Sailing Instructions will take precedence.

### 2 NOTICES TO COMPETITORS

Notices to competitors will be posted on the official notice board located on the pavilion on the north side of the club.

### 3 CHANGES TO SAILING INSTRUCTIONS

Any change to the sailing instructions will be posted before 0900 on the day it will take effect, except that any change to the schedule of races will be posted by 1800 on the day before it will take effect.

### 4 SIGNALS MADE ASHORE

4.1 Signals made ashore will be displayed at the flagpole in front of the clubhouse.

4.2 When flag AP is displayed ashore, '1 minute' is replaced by 'not less than 60 minutes' in the race signal. This changes Race Signal AP.

### 5 SCHEDULE

Day	Time	
Fri	930-1030	Registration
Fri	11am	Skippers meeting:
		VXone, Albacore, Daysailor
		S2 7.9s & MC Scows
Fri	1200	Warning Signal – 1 <sup>st</sup> race
Sat	9-10am	Registration
Sat	1030	Skippers meeting
Sat	1130	Warning Signal - 1 <sup>st</sup> race
Sun	1000	Warning Signal - 1 <sup>st</sup> race
Sun	1330	No Warning after this time
		Awards ASAP after racing

### 6 CLASS FLAGS

The class flags are described in Attachment I.

### 7 RACING AREA

Attachment 2 shows the location of the racing area.

### 8 THE COURSES

8.1 The diagrams in Attachment II show the courses, including the approximate angles between legs and the order in which marks are to be passed and the side on which the mark is to be left.

8.2 If no windward offset mark is set, boats shall sail directly from the windward mark to the leeward mark(s) or finish.

8.3 If a single leeward mark is set instead of a gate, the mark shall be left to port.

### 9 MARKS

Marks are described in Attachment I.

### 10 THE START

10.1 The starting line will be between a staff displaying an orange flag on the race committee signal boat at the starboard end and the course side of the port end starting mark.

10.2 Boats whose warning signal has not been made shall avoid the starting area during the starting sequence for other races.

10.3 A boat starting later than 4 minutes after her starting signal will be scored Did Not Start without a hearing. This changes rule A4.

### 11. CHANGE OF THE NEXT LEG OF THE COURSE

To change the next leg of the course, the race committee will lay a new mark (or move the finishing line) and remove the original mark as soon as practicable. When in a subsequent change a new mark is replaced, it will be replaced by an original mark.

### 12 THE FINISH

12.1 The finishing line will be between a staff displaying an orange flag on the race committee signal boat and the finishing mark.

### 13 PENALTY SYSTEM

13.1 Rule 44.1 is changed so that the Two-Turns Penalty is replaced by One-Turn Penalty.

### 14 TIME LIMIT

14.1 Boats failing to finish within 30 minutes after the first boat in their class sails the course and finishes will be scored DNF without a hearing. This changes RRS 35, A4 and A5.

### 15 PROTESTS AND REQUESTS FOR REDRESS

15.1 Protest forms are available outside the Club Office. Protests, requests for redress and reopening shall be delivered there within 60 minutes after the race committee signal boat docks. The docking time will be posted on the Official Notice Board.

15.2 Notices will be posted no later than 30 minutes after the protest time limit to inform competitors of hearings in which they are parties or named as witnesses. Hearings will be held in the club office beginning at the time posted.

15.3 Notices of protests by the race committee or protest committee will be posted to inform boats under rule 61.1(b).

15.4 Breaches of instructions 10.2 and 17 will not be grounds for a protest by a boat. This changes rule 60.1(a). Penalties for this breach may be less than disqualification if the protest committee so decides.



## One Design Midwinter Regatta

March 20-22, 2015

### Sailing Instructions

---

- 15.5 On the last scheduled day of racing a request for reopening a hearing shall be delivered
- (a) within the protest time limit if the requesting party was informed of the decision on the previous day
  - (b) no later than 30 minutes after the requesting party was informed of the decision on that day.
- This changes rule 66.
- 15.6 On the last scheduled day of racing a request for redress based on a protest committee decision shall be delivered no later than 30 minutes after the decision was posted. This changes rule 62.2.

#### 16 SCORING

- 16.1 One race is required to be completed to constitute a series.
- 16.2 (a) When fewer than 5 races have been completed, a boat's series score will be the total of her race scores.
- (b) When 5 or more races have been completed, a boat's series score will be the total of her race scores excluding her worst score.

#### 17 RADIO COMMUNICATION

Except in an emergency, a boat shall neither make radio transmissions while racing nor receive radio

communications not available to all boats. This restriction also applies to mobile telephones.

#### 18 PRIZES

- 18.1 Prizes will be given to each crew placing first, second and third in each class with five or more entries; to those placing first and second in classes with four entries and to the first place competitor in classes with three entries.

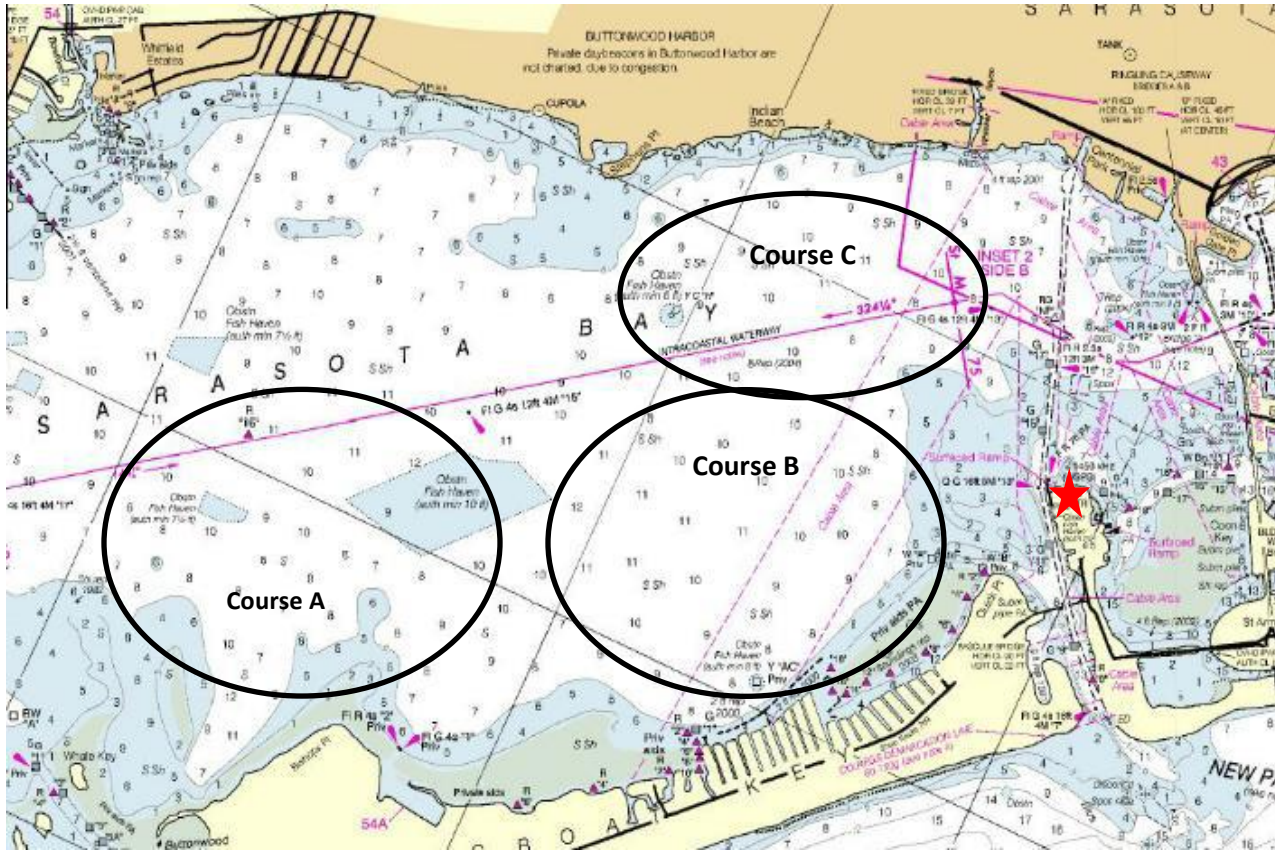
18.2 Other prizes may be awarded.

#### 19 DISCLAIMER OF LIABILITY

Competitors participate in the regatta entirely at their own risk. See RRS 4, Decision to Race. The organizing authority will not accept any liability for material damage or personal injury or death sustained in conjunction with or prior to, during, or after the regatta.

.

**Attachment I – Sailing Areas, Mark Description, Class Flags**



Course A	VHF Channel	Mark Descriptions	Class Flags
VX1 (E Scows - Sat + Sun only) (MC Scow Friday only)	71	Course marks - Orange tetrahedrons Offset mark – Orange ball Start/Finish mark – Orange Tetrahedron Change mark – Green tetrahedron	Class flags will be described at the initial skipper’s meeting and the list posted on the Official Notice Board by 1000h on March 20 <sup>th</sup> .

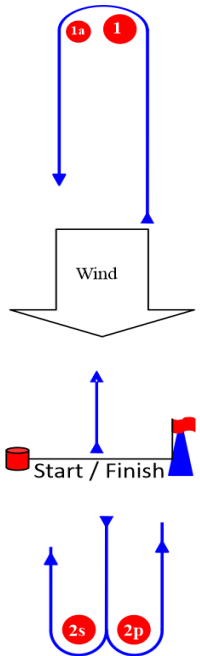
Course B	VHF Channel	Mark Descriptions	Class Flags
Albacore	70	Course marks – Yellow tetrahedrons Offset mark – Orange Ball Start/Finish mark – Yellow tetrahedron Change Mark – Green	Class flags will be described at the initial skipper’s meeting and the list posted on the Official Notice Board by 1000h on March 20 <sup>th</sup> .

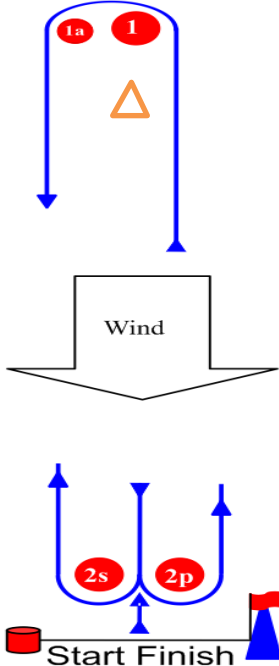

**One Design Midwinter Regatta**  
**March 20-22, 2015**  
**Sailing Instructions**

Course C	VHF	Mark Descriptions	Class Flags
Daysailor F. Scot S2.79 Windmill	69	Course marks – Yellow Cylinder Offset mark – Orange Ball Start/Finish mark – White tetrahedron Change Mark – Green	Class flags will be described at the initial skipper’s meeting and the list posted on the Official Notice Board by 1000h on March 20th.

**Attachment II – Course Illustrations**

**COURSE M**

	Windward leeward with offset, gate and mid start line	
	Possible courses	
	Classes	Mark Rounding Order
	<b>M1</b>	Start-1-1a-2s/2p-Finish
	<b>M2</b>	Start-1-1a-2s/2p-1-1a-2s/2p-Finish
<b>M3</b>	Start-1-1a-2s/2p-1-1a-2s/2p-1-1a-2s/2p-Finish	

Course W	Description	
	<b>Windward/Leeward offset mark 1a with Downwind finish</b>	
	<b>Possible courses</b>	
	<b>Signal</b>	<b>Mark Rounding Order</b>
	W1	Start-1-1a-Finish
	W2	Start-1-1a-2s/2p-1-1a-Finish
	W3	Start-1-1a-2s/2p-1-1a-2s/2p-1-1a-Finish
		<b>For Short Windward leg (S)</b>
	S 1	Start -S - finish
	S2	Start- S-2s/2p-S -Finish
	S3	Start-S-2s/2p-S-2s/2p-S-Finish
S Mark	S mark  White Tetrahedron	