



# **2015 CSR Marine Melges<sup>24</sup> US National Championship Regatta**

*August 7, 8 & 9, 2015*

Organizing Authority is the Columbia Gorge Racing Association (CGRA)  
Cascade Locks, Oregon

In cooperation with the United States Melges<sup>24</sup> Class Association

## **SAILING INSTRUCTIONS**

### **1. RULES**

- 1.1. The regatta shall be governed by rules as defined by the Racing Rules of Sailing.
- 1.2. The following prescriptions of the national authority (US Sailing) will not apply; 40, 60, and 63.2.
- 1.3. The rules will be changed as follows:
  - a) Rule 29.1 and rule 30.1 are changed to permit the hailing of recall numbers. The failure of any boat to hear the hail, an untimely hail of OCS boats, failure to hail any boats, and the order of the boats in the hail shall not be grounds for granting redress;
  - b) The preamble to Part 4 and rule 40 are changed such that competitors shall wear personal flotation devices, except briefly while changing or adjusting clothing or personal equipment. Wet suits and dry suits are not personal flotation devices (code flag Y need not be displayed). Competitors' attention is drawn to the US Federal Law § Title 33, Part 175, Subpart B Personal Floatation Devices that may be enforced by local law enforcement agencies, which requires that while practicing for or racing in competition, each boat must carry for each competitor aboard, either a US Coast Guard-approved flotation device, or a flotation device that conforms to regulations of their own country. Failure by a competitor to heed this advice is not a protestable item.
- 1.4. Under rule 87, the rules of the United States Melges<sup>24</sup> Class Association (USMCA), shall apply.
- 1.5. Competitors shall not interfere with commercial traffic. Boats violating USCG Inland Navigation Rules, Part B, as stated in the Inland Navigation Rules Act of 1980 (Public Law 96-591, 94 Stat. 3415, 33 U.S.C. 2001-2038) or boats that are given a 5 blast warning of 5 short sounds may be subject to disqualification without a hearing. This changes rule 63.1.

### **2. NOTICES TO COMPETITORS**

- 2.1. Notices to competitors will be posted on the official regatta notice board located at the Regatta Office which is the building located at the beach near the point.

2.2. Notices will also be posted on Notice Board section of the Regatta Website at [http://www.regattanetwork.com/event/9441#\\_newsroom](http://www.regattanetwork.com/event/9441#_newsroom).

### 3. CHANGES TO SAILING INSTRUCTIONS

Any change to the Sailing Instructions will be posted before 0830 on the day the change will take effect; except that any change to the schedule of races will be posted by 2000 on the day before it will take effect.

### 4. SIGNALS MADE ASHORE

- 4.1. Signals made ashore will be displayed from the flagpole located on the jetty behind the CGRA Race Office.
- 4.2. When flag "AP" is displayed ashore, the warning signal for the next race will be made not less than 60 minutes after flag "AP" is lowered.

### 5. SCHEDULE

5.1.

Thursday, August 6	9:00 am-6:00 pm 2:00-4:00 pm	Check-in at CGRA Race Office Practice racing
Friday, August 7	8:00 am-10:00 am 10:00 am 12:00 pm	Check-in at CGRA Race Office Competitors Meeting CGRA Race Office First Race Warning
Saturday, August 8	12:00pm 6:00 pm	First Race Warning Regatta Dinner
Sunday, August 9	11:00 am 3:00 pm	First Race Warning No Race Warning After This Time Awards presentation to follow expiration of protest time limit. CGRA Race Office

5.2. Subsequent races will be held as soon as possible after the end of the previous race.

5.3. The minimum number of races to constitute a regatta for each class is 3.

5.4. Flag "A" displayed, with no sound, while boats are finishing means "No more racing today."

### 6. CLASS FLAG

The class flag will be red with the M24 insignia.

### 7. RACING AREA

The racing area shall be as depicted on Addendum "A".

### 8. THE COURSES

- 8.1. The diagrams attached as Addendum "B" show the courses, including the approximate angles between legs, the order in which the marks are to be passed, and the side on which each mark is to be left.
- 8.2. The courses will be L, L2, W, W2, and WM. The course will be indicated by placards displayed on the Race Committee signal boat at the warning signal for that class.
- 8.3. When there is a gate, boats shall sail between the gate marks from the direction of the previous mark and subsequently complete their rounding around either of the gate marks.
- 8.4. If one of the gate marks is missing or absent, the mark in position shall be left to port.

**9. MARKS**

- 9.1. Marks of the course will be yellow inflatable.
- 9.2. A windward offset mark to be rounded to port shall be used in conjunction with mark 1, designated as mark 1a, and will be an orange inflatable buoy.

**10. THE START**

- 10.1. Races will be started using rule 26 with warning signals made 5 minutes before the starting signal.
- 10.2. The start line will be between the staff from which an orange flag is displayed on the Race Committee signal boat at the starboard end, and the staff from which an orange flag is displayed on the pin boat at the port end.
- 10.3. Individual recalls will be signaled in accordance with rule 29.2. The Race Committee will attempt to broadcast the sail numbers of OCS boats on VHF Channel 69.

**11. CHANGE OF THE POSITION OF THE NEXT MARK**

To change the position of the next mark, the Race Committee will move the original mark. The change will be signaled before the leading boat has begun the leg, although the new mark may not be in position. Any mark to be rounded after rounding the moved mark may be relocated without further signaling to maintain the original course configuration.

**12. THE FINISH**

The finish line will be between the staff from which an orange flag displayed on the Race Committee signal boat and the staff from which an orange flag is displayed on the pin boat.

**13. PENALTY SYSTEM**

- 13.1. Rule 44 shall apply except as modified in 13.2.
- 13.2. The first two sentences of Racing Rule 44.1 are changed as follows: "A boat may take a One-Turn Penalty when she may have broken a rule of Part 2 or rule 31 when racing. However, when she may have broken a rule of Part 2 while in the zone around a mark other than a starting mark, her penalty shall be a Two-Turns Penalty."

**14. TIME LIMITS AND TARGET TIMES**

- 14.1. Time limits and target times are as follows:
  - a) Target time will be 60 minutes.
  - b) Time limit will be 120 minutes.
- 14.2. Boats failing to finish within 20 minutes after the first boat sails the course and finishes will be scored Did Not Finish without a hearing. This changes rules 35, A4 and A5.

**15. PROTESTS AND REQUESTS FOR REDRESS**

- 15.1. Protest forms will be available at and returned to the race office on shore. The protest time limit is 45 minutes after the RC boat docks.
- 15.2. A protest hearing schedule and the location of the hearings will be posted on the official notice board no later than 15 minutes following the end of protest time to inform competitors of hearings in which they are parties or named as witnesses. Hearings will be held in the Columbia Gorge Racing Association race office building beginning at the time posted.
- 15.3. This posting constitutes the notification required in RRS 61.1(b) and 63.2. It is the responsibility of each participant to check the posted schedule of protest hearings.
- 15.4. Breaches of instructions 1.3 (b), 19 and 20 will not be grounds for a protest or redress by a boat. This changes rule 60.1(a). Penalties for these breaches may be less than disqualification if the protest committee so decides.

- 15.5. On the last day of the regatta a request for reopening a hearing shall be delivered:
- a) Within the protest time limit if the party requesting reopening was informed of the decision on the previous day; or
  - b) Within the protest time limit, or 30 minutes after the decision is announced, whichever is later. This changes rules 62.2 and 66.

## **16. SCORING**

- 16.1. The Low Point Scoring System (Appendix A) shall be used.
- 16.2. When fewer than 5 races have been completed, a boat's series score will be the total of her race scores. When 5 - 9 races have been completed, a boat's series score will be the total of her race scores excluding her worst score. When 10 or more races have been completed, a boat's series score will be the total of her race scores excluding her two worst scores.
- 16.3. The race committee will attempt to complete as many races as conditions allow. A minimum of three completed races are required to constitute a series.

## **17. REPLACEMENT OF CREW**

- 17.1. Substitution of competitors will not be allowed unless authorized by the Protest Committee in writing. Requests for substitution shall be made to the committee at the first reasonable opportunity, which may be after the race.

## **18. EQUIPMENT AND MEASUREMENT CHECKS**

- 18.1. A boat or equipment may be inspected at any time for compliance with the class rules.
- 18.2. Competitor are responsible for ensuring their equipment is in compliance with the Melges/24 rules.

## **19. SUPPORT BOATS**

- 19.1. Support boats, including coach and spectator boats, must register at the CGRA race office during the check-in period. During racing, support boats shall monitor the race committee VHF channel and remain more than 50 yards from the course area, except when asked to assist by the race committee. Support boats shall not communicate with boats that are racing.
- 19.2. Support boats shall check with the CGRA race office regarding availability and location of berthing at the public dock in the Cascade Locks Marine Park Marina.

## **20. TRASH DISPOSAL**

- Boats shall not put trash in the water. Trash may be placed aboard support and race committee boats.

## **21. LAUNCHING, BERTHING AND HAUL-OUT RESTRICTIONS**

- 21.1. All boats intending to race shall be afloat by 9:00 am on Friday, August 7.
- 21.2. Boats shall be kept in the designated areas of the Cascade Locks Marine Park or as otherwise assigned by the CGRA race office. Specific berths may be assigned at check-in.
- 21.3. Boats shall not be hauled out during the regatta without the prior written permission of the protest committee.
- 21.4. Boats shall not be kept on a hydro-hoist or other flotation device during the regatta.

## **22. DIVING EQUIPEMNT AND PLASTIC POOLS**

- Underwater breathing apparatus, including snorkels, and plastic pools or their equivalent, shall not be used around boats between the preparatory signal for the first race and the end of the regatta.

## **23. RADIO COMMUNICATION**

23.1. Except in an emergency, a boat shall neither make radio transmissions while racing nor receive radio communications not available to all boats. This restriction also applies to mobile telephones.

23.2. Race information will be broadcast on VHF channel 69.

## **24. PRIZES**

24.1. Prizes will be given to the top 3 teams overall and to the top 3 Corinthian teams.

24.2. Additional prizes may be awarded by the class association.

## **25. RISK, DISCLAIMER OF LIABILITY, PERSONAL CONDUCT**

25.1. Competitors participate in the regatta at their own risk. See Rule 4 (Decision to Race). The organizing authority will not accept any liability for material damage or personal injury or death sustained in conjunction with or prior to, during, or after the regatta.

25.2. Competitors will accept full responsibility for all their actions during any activity related to this event. This includes on-shore activities before, during, and after the regatta.

25.3. Competitors are expected to conduct themselves in a sportsmanlike manner at all times and to abide by the Marine Park Rules as stated in Addendum "C".

## **26. INSURANCE**

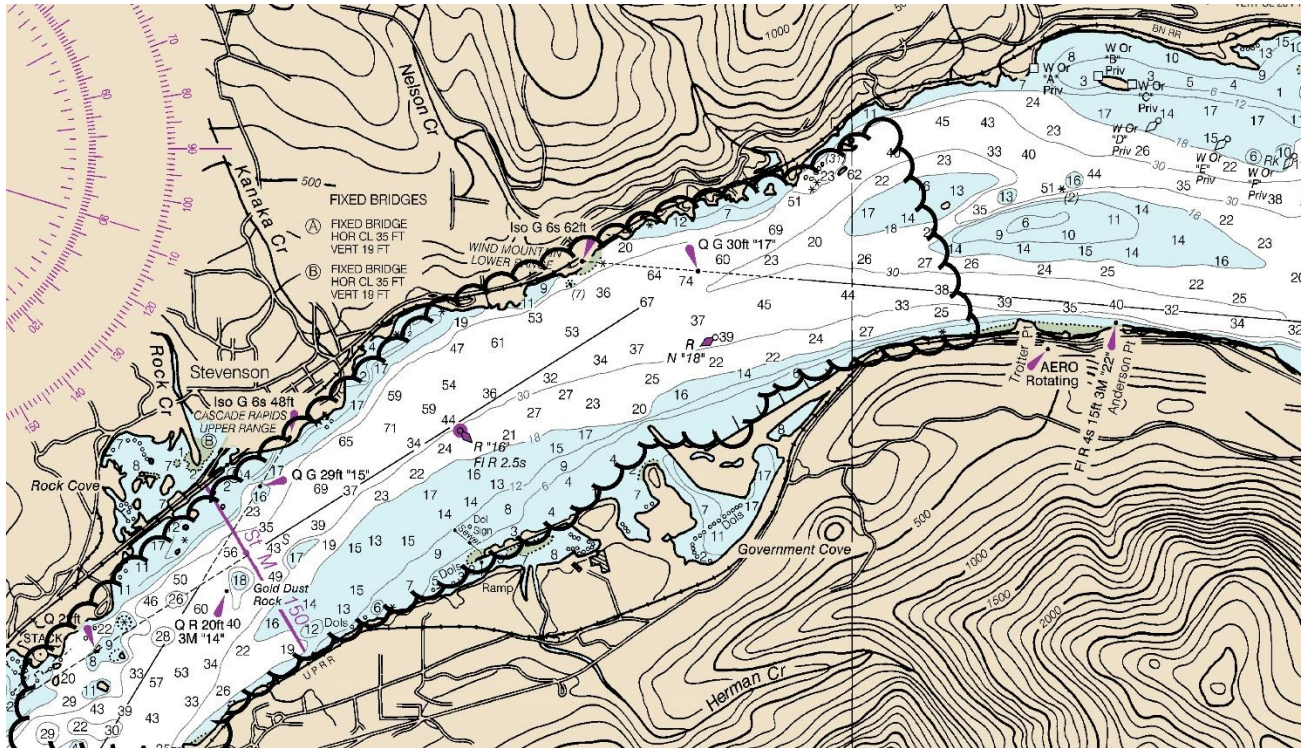
Each participating boat shall be insured with valid third party liability insurance with a minimum cover of \$500,000 per event or the equivalent. Competitors shall be prepared to supply proof of insurance on request.

## **27. RIGHT TO USE NAME AND LIKENESS**

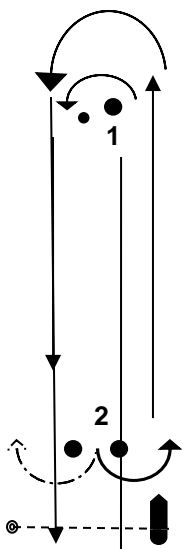
By participating in this event, all competitors automatically grant the organizers and sponsors the right to make, use and show, at any time and at their discretion, any photographs or videos of him or her produced during the period of the event without compensation.



## ADDENDUM A RACING AREA



## ADDENDUM B COURSE DIAGRAMS

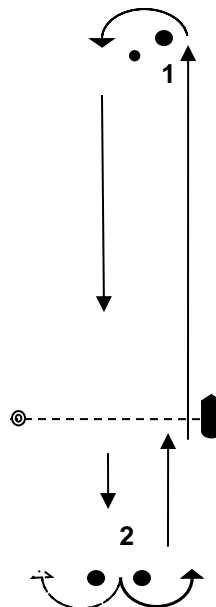


**W**

Start-1-2-1-Finish

**W2**

Start-1-2-1-2-1-Finish

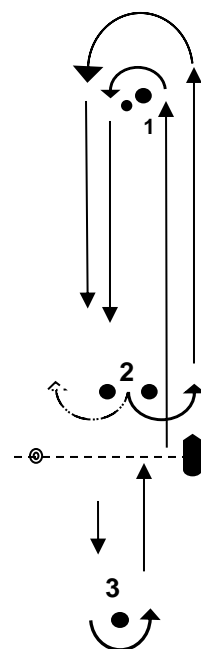


**L**

Start-1-2-Finish

**L2**

Start-1-2-1-2-Finish



**WM**

Start-1-2-1-3-Finish

## ADDENDUM C MARINE PARK RULES

### Welcome to Cascade Locks Marine Park! We're glad that you are here.

Sailors share this public park with many other types of users: swimmers, fishermen, cruise boats, kayakers, hikers, campers, picnickers, and special events like weddings and reunions. By following these guidelines as a courteous guest, you will help to ensure that CGRA may continue to hold regattas at the Marine Park.

### Parking is limited in the Marine Park. Please obey all posted signs.

- **At the beach:** Do not park in spaces marked for marina patrons. Do not park along the south side of the road to the beach (red striped fire lane). Do not park in the area marked for boat trailers. Do not block aisles or access ways with cars, boats, trailers or gear. RVs and campers are not allowed to park in the beach parking. Overflow parking will be available in area A (see map) if beach parking lot is full.
- **Please do not** park in the parking lot adjacent to the Locks Waterfront Grill/Visitor Center. This is for Sternwheeler cruise boat guests, restaurant, and gift shop customers only.

### Trailer Parking

- Trailers may **not** be left in automobile parking spaces.
- Trailer parking is marked **A** on the map. Trailer fee of \$5/day can be paid either at the Port office or upon event check in at CGRA office. A trailer tag will be issued to you.
- Boats may be left in the moorage pen only with the permission of the CGRA facilities manager. See the regatta office for more information.
- Unauthorized vehicles, trailers, or boats left unattended may be towed.

### Camping is available at the Marine Park most weekends.

- Advanced reservations may be made for an RV (\$28) or tent (\$18) site in the campground by calling: 541-374-2404. Check in with camp host in site #1.
- Sailor overflow camping \$12/tent (**B** on map) is for sailing events only. No reservations.
- Camping must be in designated areas only. No camping in parking lots or beach area.
- No campfires.
- Showers (\$3 or included with campsite) and restrooms are open to public.
- RV dump station is located in the campground.
- **Quiet hours:** 10pm – 7am.

### Miscellaneous

- Respect and avoid Native American fishing nets indicated by buoys, and platforms.
- Do **not** prop open the keypad locking gate to the Marina.
- Please keep personal gear and boat equipment together, out of the road, and secure. CGRA and the Port of Cascade Locks are not responsible for lost or stolen items.
- Bins are available for secure overnight storage in the CGRA container.
- **Park hours:** The park closes between 10 pm and ½ hour before sunrise for non-campers.
- Please pick up all trash and recycling.

Port of Cascade Locks  
 355 Wa Na Pa Street / P.O. Box 307  
 Cascade Locks, OR 97014  
 (541) 374-8619  
[portofcascadelocks.org](http://portofcascadelocks.org)

