

May 30 – 31, 2015
2015 Santa Cruz Hobie & Multihull Regatta



Notice of Parking and Launching

Reminder:

- **Competitors and guests will need to obtain parking and trailer passes to park and launch at Santa Cruz Harbor.**
- **Vehicles and Trailers not displaying a pass or not parked in the designated areas may be ticketed by the Santa Cruz Harbormaster.**

1. General Instructions

- 1.1. Santa Cruz Small Craft Harbor supports many recreational, commercial and community activities. Competitors and Guests need to be respectful of all Harbor users. Please be courteous to all and not impede Harbor traffic when rigging and launching and sailing.
- 1.2. , The Santa Cruz Harbormaster has arranged for free parking of boat trailers and vehicles for the 2015 Santa Cruz Hobie & Multihull regatta Competitors at the upper Harbor parking dirt lot, located at the intersection of 7th Avenue and Brommer Street in Santa Cruz. **(MAP 1 & MAP 3)**
- 1.3. Please obtain your pass for the Upper Harbor vehicle and/or trailer parking from the Regatta Committee when you arrive on Saturday or Friday night after 6 PM to use the Upper Harbor dirt parking lot.
- 1.4. Parking is \$10 per day for one vehicle (not with a trailer) anywhere else in the harbor on a first come first serve basis.
- 1.5. Please bring beach wheels or dollies to offload your boat from your trailer
- 1.6. Please allow extra time to rig and park your trailer in the upper Harbor dirt parking lot.
- 1.7. Skippers meeting will be in or near the boat park area on the West Side of the Harbor as per the Notice of Race **(MAP 2)**
- 1.8. Social activities will be at the Santa Cruz Yacht Club on the West Side of the Harbor
- 1.9. There is a water taxi that operates on weekends from 11 AM to 6 PM that shuttles between East and West side of the harbor. Please see the Harbor website for more information <http://www.santacruzharbor.org/parkingWaterTaxi.html>.
- 1.10. The fees listed here are guidelines only and all fees are set by Santa Cruz Small Craft Harbor and are subject to change without notice. Please see the Harbor Rate Fee sheet, available on the Harbor website at: <http://www.santacruzharbor.org/documents/SantaCruzHarborRates.pdf>
- 1.11. Have fun! If you have any issues please see the Regatta Committee so we can help work it out.

1. Rig and launch on West side of Harbor by Santa Cruz Yacht Club (Option 1)

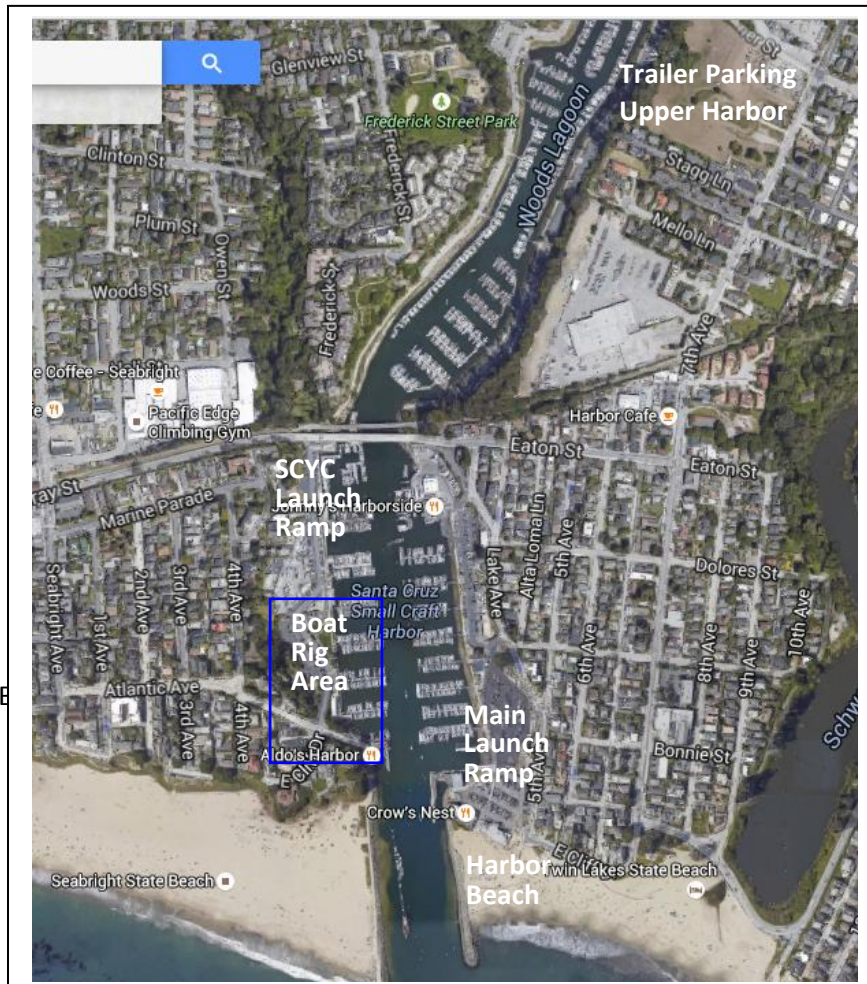
- 1.1. Launching on the west side of the Harbor is **free** for the competitors of the Regatta.
- 1.2. Please offload your boat and gear onto the grass area to rig as soon as possible – Boat Rig Area **(MAP 2 Green Area)** and then take your trailer to the upper harbor parking area.**(MAP 3)**
- 1.3. Boat storage overnight will be on the grass **(MAP 2 Green Area)** or in the round about area near the grass. **(MAP 2 Red Area)**. Depending upon how many competitors are at the event., not all boats may fit on the grass area.
- 1.4. The surrounding area needs to be kept clear of congestion for other users of the harbor.
- 1.5. No trailers are allowed on the grass area **(MAP 2 Green Area)** Competitors need to be careful to not damage the grass in any way.
- 1.6. Parking is \$10 per day for one vehicle (not with a trailer) anywhere in the harbor.
- 1.7. West side launching will be either through by using the dingy ramp or by using the SCYC Hoist

May 30 – 31, 2015
2015 Santa Cruz Hobie & Multihull Regatta
Notice of Parking and Launching

2. Rig and launch on East side of Harbor by the main launch ramp (Option 2)

- 2.1. Launching in the main launch ramp on the east side by the harbor office is \$15 per day and includes parking for one day for both Vehicle and Trailer Launching in the main launch ramp on the east side by the harbor office is \$15. **(MAP 1)**
- 2.2. Boats can be stored overnight on the West Side of the Harbor for free on the grass **(East side - MAP 2 Green Area)** or in the round about area near the grass. **(MAP 2 Red Area)**. Depending upon how many competitors are at the event, not all boats may fit on the grass area.
- 2.3. Overnight boat storage on Harbor Beach **(West Side – MAP 1)** may be available for \$5 a night. Competitors need to make arrangements with the Harbor Office for overnight dry catamaran storage.
- 2.4. Overnight free parking of boat trailers and vehicles for competitors is available at the upper Harbor parking dirt lot, located at the intersection of 7th Avenue and Brommer Street in Santa Cruz. **(MAP 1 & MAP 3)**
- 2.5. Please obtain your pass for the Upper Harbor vehicle and/or trailer parking from the Regatta Committee when you arrive on Saturday or Friday night after 6 PM to use the Upper Harbor dirt parking lot.
- 2.6. East Side Overnight trailer parking is \$30 a night by the main launch ramp (mast up option) Competitors need to make arrangements with the Harbor Office **(MAP 1)**

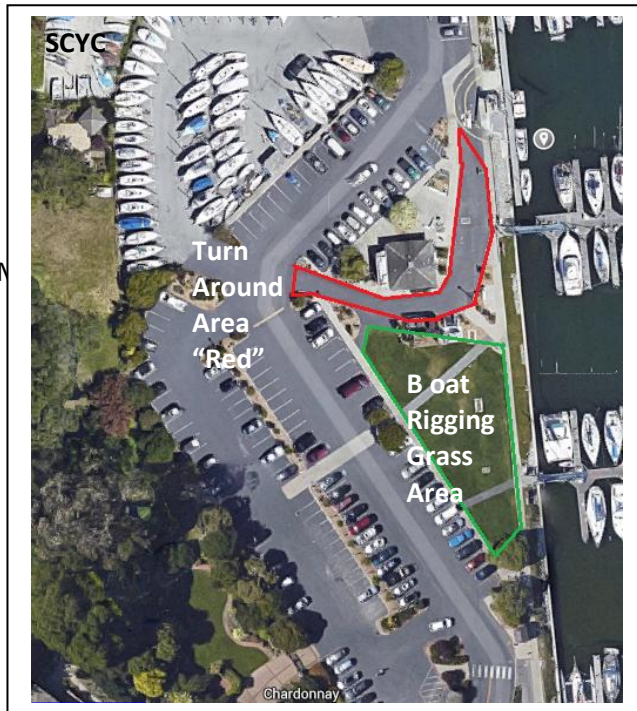
Santa Cruz Small Craft Harbor – MAP 1



May 30 – 31, 2015
2015 Santa Cruz Hobie & Multihull Regatta

Notice of Parking and Launching

Boat Rig Area “Boat Yard” – MAP 2



MAP3: Santa Cruz Harbor Upper Harbor Parking

