



International Laser Class Association

North American Championship

July 29 – August 2, 2015



Organizing Authority - SailNC, Manteo, NC

Sailing Instructions

1 RULES

- 1.1 The regatta will be governed by the rules as defined in *The Racing Rules of Sailing*.
- 1.2 US Sailing Prescriptions will apply but the US Sailing Prescriptions to rules 40, 60, 63.2 and 63.4 are deleted. Full text of the US Sailing Prescriptions will be posted on the Official Notice Board.
- 1.3 If there is a conflict between languages, the English text will take precedence.
- 1.4 Appendix P - Special Procedures for Rule 42, will apply. However, P2.3 is deleted.

2 NOTICES TO COMPETITORS

Notices to competitors will be posted on the Official Notice Board located under the Pavilion next to the regatta launch site. As a courtesy notices may also be posted on http://www.regattanetwork.com/event/9755#_docs.

3 CHANGES TO SAILING INSTRUCTIONS

Any change in these sailing instructions will be posted before 0800 on the day it will take effect, except that any change in the schedule of races will be posted before the end of the protest filing period on the day before it will take effect.

4 SIGNALS MADE ASHORE

- 4.1 Signals made ashore will be displayed from the flag pole at the bulkhead behind the Pavilion.
- 4.2 When Flag AP is displayed ashore, "1 minute" is replaced with "not less than 60 minutes" in the race signal AP.

5 RACE FORMAT

Depending on the number of registrations, the Laser and/or Laser Radial classes may have split fleets. If so the following will apply:

- 5.1 Boats will sail a qualifying round and will be assigned to either the yellow or blue fleet. Fleets will be as close to equal size as possible.
- 5.2 Initial assignments will be made by a seeding committee appointed by the organizing authority and will be posted by 2000 on the last day of registration, July 29.
- 5.3 The qualifying round will last two days provided at least four races have been completed for each fleet of a class at that time.
- 5.4 If four races have not been completed, the qualifying round for that class will last three days and the results will be based on the scores earned in the number of races then completed by both fleets.
- 5.5 During the qualifying series, after each day in which more than one race is completed, boats will be reassigned to fleets based on series scores to date. Reassignments will be made as follows:

Rank in Series	Fleet Assignment
1st	Yellow
2nd	Blue
3rd	Blue
4th	Yellow

Rank in Series	Fleet Assignment
5th	Yellow
6th	Blue
7th	Blue
And so forth	

- 5.6 If both fleets for a split class have not completed the same number of races, the series scores for assignments will be calculated for those races (numbered in order of completion) completed by both fleets. These assignments will be based on the ranking available at 2000 that day regardless of protest or requests for redress not yet decided.
- 5.7 At the conclusion of the qualifying series, boats will be assigned to Gold or Silver final series fleets based on their series scores to date. The two fleets will be of as nearly equal size as possible and the Silver fleet will not be larger than the Gold fleet. In the event that one fleet has completed fewer races in the qualifying series than the other, the assignment will be calculated using those races (numbered in order of completion) completed by both fleets. Any extra race(s) completed by one fleet to that point will not be included in the final series scores for either the Gold or Silver fleet.
- 5.8 Each boat shall display, while racing, a colored band corresponding to the fleet to which she has been assigned. The colored band shall be securely taped to the mast below the gooseneck, where it is clearly visible. Yellow and blue bands will be distributed during registration to classes that may be split.

6 SCHEDULE OF RACES (NOTE – This changes NoR 6)

6.1 The first scheduled Warning for each class is below:

Date	Radial	4.7	Laser
Jul 30	1300	1330	1430
Jul 31	1100	1130	1200
Aug 1	1200	1130	1100
Aug 2	1000	1030	1100

- 6.2 A total of eleven (11) races are scheduled. Three races per day are planned for each class. One extra race per day may be sailed provided that no class becomes more than one race ahead of schedule.
- 6.3 There will be no Warning after 1200 on August 2.

7 RACING AREA

The racing area will be in the Croatan Sound west of Dare County Airport, as shown in Attachment A.

8 COURSES

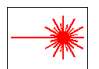
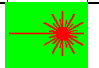

- 8.1 The diagrams in Attachment B show the courses, the included angles between legs, the order in which marks are to be passed, and the side on which each mark is to be left.
- 8.2 The course and approximate magnetic bearing to the first mark will be displayed from the race committee signal boat prior to the warning signal for each race. An example is shown below:

O	Outer
270	Approx magnetic bearing to windward mark

9 MARKS

Mark(s)	Original	Change
M1, M2	Yellow West Marine Cyls	Orange Tetrahedrons
M3, M4	Yellow Tetrahedrons	
M5, finish pin	Green Tetrahedrons	
Start pin	Small red/orange buoy	
Start, finish	RC vessels	

10 CLASS FLAGS

Laser	Laser Symbol on White	
Radial	Laser Symbol on green	
4.7	Laser symbol on yellow	

For split fleets, the color corresponding to the fleet being started will be flown with the class flag as follows:

Yellow/Gold Fleet – yellow flag

Blue/Silver Fleet – blue flag

11 THE START

- 11.1 The starting line for the Laser and Radial classes will be between a staff displaying an orange flag on the RC signal boat at the starboard end of the starting line and the staff displaying an orange flag on a RC boat at the port end. The race committee may set a small red/orange buoy near the middle of the starting line. This buoy is not a mark of the course for these classes.
- 11.2 The starting line for the Laser 4.7 class will be between a staff displaying an orange flag on the RC signal boat at the starboard end of the starting line and the course side of a red/orange buoy at the port end.
- 11.3 During a starting sequence, boats whose warning signal has not been made shall stay to leeward of the line of red-orange buoys set approximately 100 meters below the start line. (See illustration in Attachment B.)
- 11.4 If flag U has been displayed as the preparatory signal, no part of a boat's hull, crew or equipment shall be in the triangle formed by the ends of the starting line and the first mark during the last minute before her starting signal. If a boat breaks this rule and is identified, she shall be disqualified without a hearing but not if the race is restarted or re-sailed or postponed or abandoned before the starting signal. This changes rule 26. When flag U is used as the preparatory signal, rule 29.1 Individual Recall does not apply. The scoring abbreviation for a flag U penalty is UFD. This changes rule A11.
- 11.5 A boat shall not start later than 4 minutes after her starting signal. Such boat will be scored DNS without a hearing. This changes rules A4 and A5.
- 11.6 Multiple horns will be used to alert boats that a race or sequence of races will begin soon.

12 CHANGE OF THE NEXT LEG OF THE COURSE

To change the next leg of the course, the race committee will:

- (a) lay a new mark or
- (b) move the finishing line or
- (c) move the leeward gate.

When a new mark is laid, the original mark will be removed as soon as possible. When in a subsequent change a new mark is replaced, it will be replaced by an original mark. Individual gate marks may be moved (without signal) to maintain the configuration of the course.

13 THE FINISH

- 13.1 The finishing line will be between a staff displaying an orange flag on the RC finishing boat at the starboard end and the course side of the port end finishing mark.
- 13.2 Flag A displayed, with no sound, while boats are finishing means "No more racing today."
- 13.3 For unofficial information only, the race committee will attempt to post the sail numbers of boats being given a starting/finishing penalty (from the then-current race) on a board on the side of the finish boat opposite the finishing line. An error or omission in these postings will not be grounds for redress. This changes rule 62.1(a).

14 TIME LIMITS

The time limit for the first boat in each class/split to finish a race will be 90 minutes. In addition, any boat failing to finish within 20 minutes of the first boat in her class/split to sail the course and finish will be scored TLE, per SI 16.4. This changes rules 35, A4.1, A5 and A11.

15 PROTESTS AND REQUESTS FOR REDRESS

- 15.1 Protest and Scoring Inquiry forms will be available at the Protest Desk under the Pavilion.
- 15.2 As soon as practical after the race committee finish boat docks, that docking time will be posted on the Official Notice Board. Protests, requests for redress and scoring inquiries shall be lodged at the Protest Desk within 45 minutes of that posted docking time.
- 15.3 Protests and requests for redress will be heard in the approximate order of posting. The time and place of the hearings will be posted on the official notice board within 30 minutes after the end of the protest filing time. This is the notice required by rule 63.2.

- 15.4 Rule 66 is changed on the last day of the qualifying series and the last scheduled day of racing as follows: A request for redress or for reopening a hearing, based upon a protest committee's decision or a scoring error, shall be delivered within the protest filing time limit if the requesting party was informed of the decision on the previous day OR no later than 30 minutes after the requesting party was informed of the decision on that day.
- 15.5 Alleged breaches of Notice of Race paragraph 4 and Sailing Instructions 5.8, 11.3 and 17 will not be grounds for protest by a boat. This changes rule 60.1(a).
- 15.6 The protest committee may impose suitable penalties, other than disqualification, for violations of non-Part 2 rules of RRS, changing rule 64.1.

16 SCORING

- 16.1 A minimum of three races must be completed to constitute a regatta for each class. In the case of split fleets, all fleets must have completed at least three races.
- 16.2 For split fleets:
 - 16.2.1 Scores from races in both rounds will be used to determine a boat's final series score.
 - 16.2.2 The boats assigned to Gold fleet will be ranked higher in the regatta than boats assigned to Silver fleet.
 - 16.2.3 Rule A4.2 is changed so that the scores are based on the number of boats assigned to the largest fleet.
- 16.3 When fewer than six races have been completed, a boat's qualifying round or series score will be the total of her race scores. After six or more races have been completed, a boat's qualifying round or series score will be the total of her scores excluding her worst score.
- 16.4 Boats scored TLE will be scored points equal to the number of boats which sail the course and finish plus two points, without a hearing. This changes rules A4.1, A4.2 and A5.

17 SAFETY

- 17.1 All boats shall check in with the Race Committee Signal boat prior to the warning signal of the first race each day by sailing past the stern of the signal boat on starboard tack and hailing her sail number until acknowledged by the race committee.
- 17.2 Competitors will be issued an identification safety bracelet at Registration. The safety bracelet shall be worn at all times during the regatta. On each day of racing, each competitor will personally sign out at the Safety Desk located under the Pavilion prior to proceeding to the water. Upon completion of racing each day, each competitor will, likewise, personally sign in at the Safety Desk. Sign in shall be completed prior to the expiration of time for submitting protests as described in SI 15.2. Sign out and sign in by other parties will not be accepted.
- 17.3 A competitor that withdraws from a race or intends not to start a race shall inform the nearest race committee boat as soon as possible. In the event this is not possible, then immediately after arriving ashore the competitor shall notify the regatta representative at the Safety Committee table and follow the same procedure as in instruction 17.2.
- 17.4 Failure to comply with instruction 17.1 or 17.2 shall result in a boat having 5 points added to her position in her last completed race that day (without a hearing) for the first violation (SVA), 10 points for the second violation (SVB). Additional alleged violations are subject to protest by the Protest Committee and, following a hearing, may include disqualification. This changes rules 63.1, 64.1, A3, A5 and A11.
- 17.5 Competitors shall wear a personal flotation device at all times while afloat, except temporarily while changing clothes. Such device shall verifiably meet the requirements of either the sailor's national authority or of the government regulations that apply in the racing area. This changes rule 40.

18 OFFICIAL BOATS

Official Boats will be identified as follows:

Race Committee Signal Boat	Blue flag with RC and red anchor
Race Committee Mark Boats	Yellow flag with RC and red anchor
Judge Boats	US Sailing Judge Flag
Safety Boats	White flag with green cross (+) in center

19 COACH AND SUPPORT BOATS

- 19.1 Support boats with team leaders, coaches, and other support personnel shall stay at least 75 meters outside the course and any racing sailboat and shall not be between the outer and inner trapezoid loops from the time of the preparatory signal for the first class/fleet to start until all boats have finished or the race committee signals a postponement or abandonment. Support boats intending to watch a start shall also stay to leeward of the line of buoys set approximately 100 meters below the start line (from the warning signal until the start or a postponement is signaled).
- 19.2 Support boats will be issued an identification flag during registration. This flag shall be clearly displayed at all times while under way. A deposit of \$35 will be required for the flag, to be refunded at the end of the event when the flag is returned to the OA.
- 19.3 Unregistered boats shall remain well clear of the entire racing area at all times.

20 RADIO COMMUNICATIONS

- 20.1 The race committee will monitor VHF channel 72. Coach/support boats are asked to monitor that channel and to respond to any reasonable request from the race committee to stand by or otherwise assist in the safe conduct of this event.
- 20.2 In the interest of competitor safety, coach/support boats are also requested to report any potentially dangerous situations they observe to the Safety Committee on VHF channel 71.

21 REPLACEMENT OF EQUIPMENT

Substitution of damaged or lost equipment will not be allowed without prior written approval of the race committee. The competitor may request an Inquiry Form from the Protest Desk. The completed form will be given to the appropriate parties for consideration.

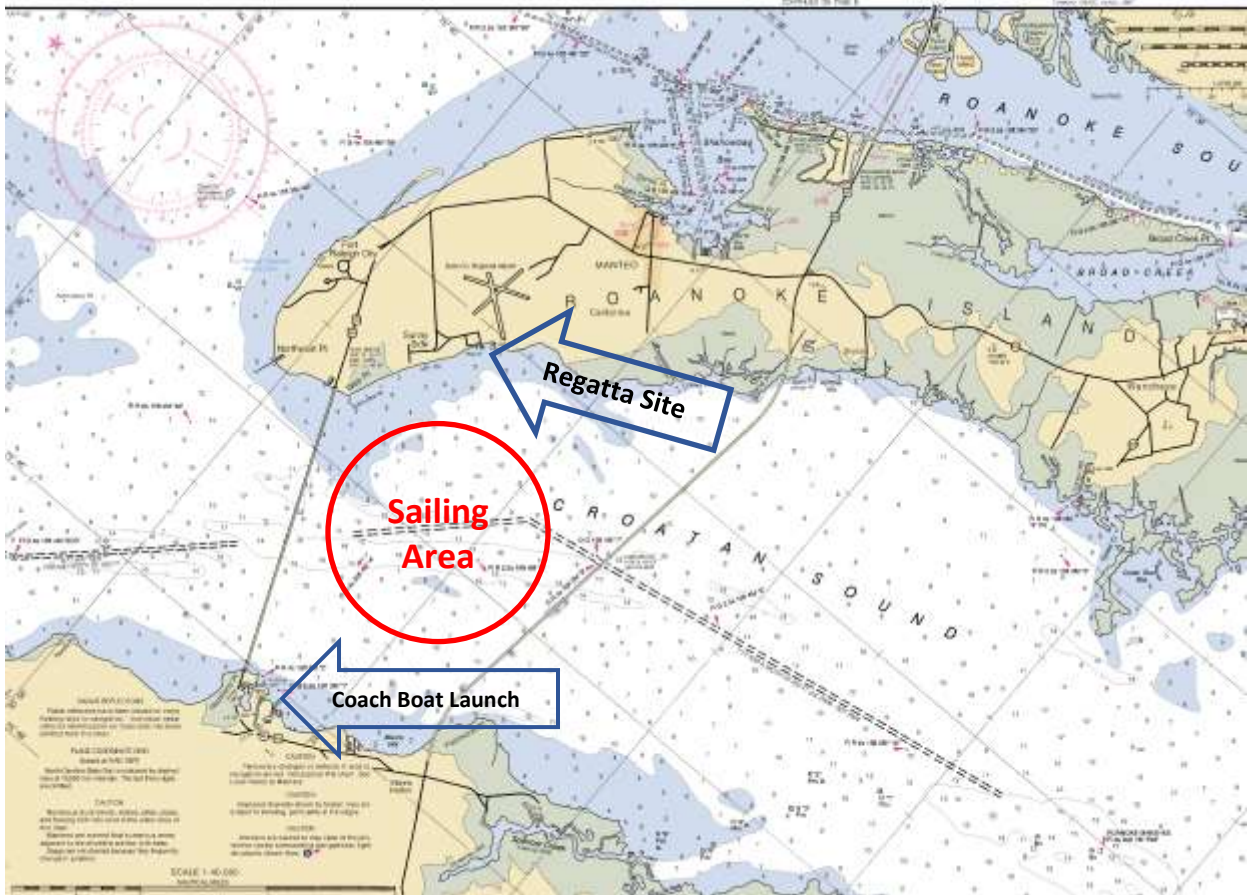
22 TRASH DISPOSAL

Trash may be placed aboard support or official boats.

23 DISCLAIMER OF LIABILITY

Competitors participate in the regatta entirely at their own risk. See rule 4, Decision to Race. The organizing authority will not accept any liability for material damage or personal injury or death sustained in conjunction with, prior to, during, or after the regatta.

Attachment A – Racing Area



Attachment B - Possible Courses

