



The Conundrum-Redux

Galveston Bay Texas

July 26, 2015

Galveston Bay Cruising Association and SOS-TEX

1500 Marina Bay Dr. Suite 1592 • Building #113B • Clear Lake Shores, TX

Sailing Instructions

Revised 7/25/2015

1. RULES

The Race will be governed by The Racing Rules of Sailing (RRS) 2013-2016 including US SAILING Prescriptions, Section 6 of the SOS-TEX bylaws attached, PHRF of Galveston Bay, the Notice of Race and these Sailing Instructions. Autopilot and/or wind-powered self-steering gear are allowed while racing. This modifies RRS 52.

The following RRS are modified herein:

Sailing Instruction 5.2 modifies RRS 62.1(a)

Sailing Instruction 8.2 & 8.3 modifies RRS 26

Sailing Instruction 11 modifies RRS 61

Sailing Instruction 13 modifies RRS 35

Crew size is limited to single-hand and double-hand classes.

2. NOTICES TO COMPETITORS

Notices to Competitors will be posted at:

https://www.regattanetwork.com/clubmgmt/applet_club_events.php?CLUB_ID=162 .

3. CHANGES TO THE SAILING INSTRUCTIONS

Any change to the sailing instructions or notice of race will be posted before 0700 on the day it will take effect.

4. WARNING SIGNAL

The warning signal for the first start will not be before 1055 hours.

5. RADIO COMMUNICATION

5.1 Radio communication will be conducted on VHF channel 69.

5.2 In addition to signaling Individual Recalls in accordance with RRS 29.1, as a courtesy, the Race Committee will attempt to broadcast the names or sail numbers of boats that have started early. Failure to make such a broadcast, failure of a boat to receive that broadcast, a boat's order in that broadcast, or the promptness of that broadcast will not be grounds for redress. This modifies RRS 62.1(a).

5.3 If a weather-related postponement is required it will be announced at 1000 on VHF Channel 69. Postponements will be in increments of 1 hour. Starting time will be adjusted accordingly, so for example if we postpone hour, you will add one hour to your start time. The finish cut off time will also be delay by the same amount of time.

6. CHECK-IN PROCEDURE

All yachts intending to race shall check in with the Race Committee on VHF Channel 69 prior to their warning signal.

7. START LINE / GATE / FINISH LINE

The Start Line / Gate / Finish Line will be approximately 0.6nm south of Clear Lake channel marker 1, between an Orange Flag displayed from the Signal Boat and the course side of a nearby Orange Mark. The Start/Finish line will be used as a

Gate during the race. The line will be oriented on an angle that is approximately parallel to the alignment of the 3 fixed marks.

8. THE START

8.1 The starting line will be between the staff displaying an orange flag on the Signal Boat on the starboard end and the course side edge of a nearby Mark at the port end of the line.

8.2 This is a reverse start (pursuit) race, with the (GPS) start time for each boat based on its PHRF rating following the 1100 hours. See the accompanying Appendix B for assigned boat start times. This modifies RRS 26

8.3 The Race Committee will give no additional starting signals, except to monitor and call individual boats OCS as soon as practical after their assigned start time with sound and the individual recall flag. Any boat(s) signaled as OCS at their respective starting *time* shall thereafter sail from the course side across the starting line or one of its extensions to the pre-start side before *starting*. Failure to receive the OCS signal shall not be grounds for redress. This modifies RRS 26.

8.4 The signal boat *may* broadcast occasional time checks on VHF 69 until all boats have started.

9. THE COURSE

After starting:

- Sail to any of the three Marks listed below as E, H and M52. Round Mark to Port.
- Sail back to and though the Gate formed by the Signal Boat and nearby Mark from the direction of the last mark.
- Sail to either of the two remaining Marks not yet rounded. Round Mark to Port.
- Sail back to and though the Gate formed by the Signal Boat and nearby Mark from the direction of the last mark.
- Sail to the one remaining Mark not yet rounded. Round Mark to Port.
- Sail back to finish.

When sailing through the Gate, boats shall round either the Signal Boat to port or the Orange Mark to starboard before proceeding to the next mark.

Boats shall not enter the Houston Ship Channel. The Houston Ship Channel is designated as an Obstruction. The Official Course Length is 20.4 nautical miles. A chart showing the relative position of the marks will be available as Appendix A and from a link on the official notice board. This chart is schematic in nature and is not to be used for navigation.

Approximate location of Start/Finish Gate and Marks:

Mark	Approximate Coordinate	Description
Start/Finish Gate	N 29° 32.567' W 094° 59.545'	<i>RC Signal boat "Tramp" and a nearby orange Tetrahedron</i>
E	N 29° 35.787' W 094° 56.935'	<i>The Low Range Marker (Upper Range "A") in Galveston Bay. The mark is an orange and white structure near Houston Ship Channel Marker #73, 0.23 nm NNW of the old low range.</i>
H	N 29° 33.255' W 094° 56.542'	<i>A platform located in Galveston bay, approximately 1.3 nm WSW of the Houston Ship Channel marker #65.</i>
M52	N 29° 31.808' W 094° 55.597'	<i>A piling with "Gal Shellfish Mark 52" signage. located approximately 2.2nm NNW of Eagle Point and 1.2nm NW by W of the former J mark.</i>

In the event a mark is found to be missing and had not been replaced with a missing mark flag or with an inflatable mark, boats are to round the coordinates of the mark.

10. THE FINISH

The Finish Line will be between a staff displaying an orange flag on the Signal Boat on the port end and the course side edge of the starboard end Orange Mark.

11. PROTESTS

The protest and redress procedures for this regatta will utilize basic elements of the new RRS Appendix T, a US Sailing Prescription. Protests shall be communicated to the Race Committee before leaving the race area and must be filed in writing within 2 hours of the last boat finishing. This modifies RRS 61. Protests shall be filed at True North Marine.

12. SAFETY and WITHDRAWING PROCEDURES

12.1 Attention is called to RRS 4: Decision to Race, "The responsibility for a boat's decision to participate in a race or to continue racing is hers alone."

12.2 The Race Committee places high priority on accounting for every yacht participating in a race. It is imperative that any yacht withdrawing from a race makes its best and most persistent efforts to notify other parties of such withdrawal at the earliest opportunity. Withdrawing yachts should make every effort to contact the Race Committee and/or other nearby yachts to communicate the withdrawal via VHF channel 69. If radio communication is unavailable, call the Race Committee phone number: 281.216.4082 and leave a message. Proper reporting of a withdrawal should include; yacht name, sail number and skipper's name.

12.3 Code flag "Y" **MAY BE** displayed from the RC Signal boat in accordance with the Racing Rules of Sailing 27.1.

13. TIME LIMIT

Racing will be concluded as of 1700 hours Sunday, July 26. Yachts not finished after this time will be scored as Did Not Finish (DNF). This modifies RRS 35.

14. SCORING

The Race Committee will score the race with reverse start (pursuit) style race using the performance handicapping racing formula, time on distance, for each yacht, as determined by the Race Committee.

15. AWARDS PRESENTATION

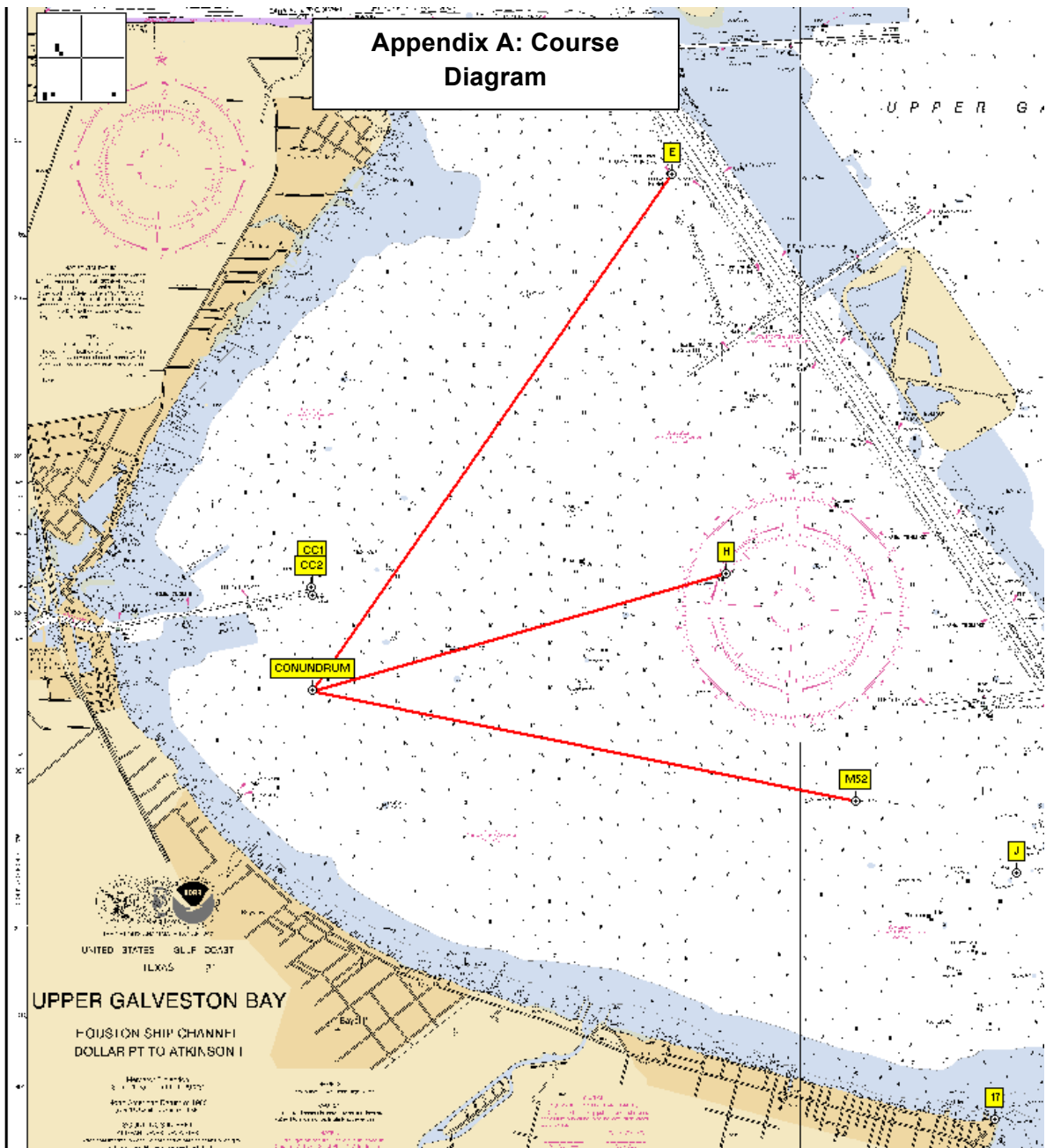
Post-race party and awards presentation will be held at the GBCA Club House Sunday July 26th after racing.

16. EXCERPT OF SOS-TEX BYLAWS: Section 6.

All boats must comply with the U.S. Coast Guard's requirements for recreational vessels and have the following minimum equipment.

NOTE: ** indicates items that are not mandatory for races whose entire course is within Galveston Bay.

- a. Lifelines or safety lines leading from both sides of the cockpit forward and well secured at each end. **
- b. Fire extinguisher meeting U.S. Coast Guard requirements.
- c. Manual bilge pump of at least 10 gallons per minute capacity.
- d. Anchor with suitable rode.
- e. Seacocks and soft wooden plugs to close all through hull openings. **
- f. Navigation lights.
- g. Compass.
- h. Charts and piloting tools.
- i. Lead line or echo sounder. **
- j. Foghorn.
- k. Radar reflector. **
- l. Waterproof flashlight.
- m. First aid kit.
- n. At least two gallons of fresh water. **
- o. Life jacket with whistle and strobe light attached, for each crewmember. Mandatory that all single-handed sailors wear life jacket at all times while racing.
- p. Safety harness with tether for each crewmember. All crewmembers should be tethered to boat or jack lines while above deck. Mandatory use of harness and tether sunset to sunrise when offshore.
- q. VHF radio (refer to additional sailing instructions for each race for the specific channel needed).
- r. Three red parachute flares or orange smoke flares, and three red handheld flares. **
- s. An alternate means of propulsion **
- t. Other equipment requirements of NOR of sponsoring yacht club.



Appendix B

Pursuit Start Sheet For Galveston Bay Cruising Association and SOS-TEX 2015 The Conundrum - Redux

Start Time:
Distance:
MAX PHRF:

Start	Sail#	Skipper	Boat Name	Class/Fleet	PHRF
11:00:00	102	Scott Lacy	Flying Kiss	Double Spin	279
11:01:22	8623	Charles Broaddus	Half Fast	Double Non-Spin	275
11:01:22	5242	Ben Miller	Tool of Justice	Double Non-Spin	275
11:06:48	n/a	Mary Morgan	Second Wind	Double GBCA Cruising Club	259
11:12:56	196	Andrew Clark	Ox-Bow	Double GBCA Cruising Club	241
11:14:38	5301	Richard Dashiell	Chiel	Double GBCA Cruising Club	236
11:15:18	191	larry crouch	Knot Yet	Single Non-Spin	234
11:25:30	133	Ron Eddleman	Stellar of Course	Double GBCA Cruising Club	204
11:26:32	144	Maarten van Hasselt	Joan III	Double Non-Spin	201
11:28:34	12440	Butch Boos	Tenacious	Single Non-Spin	195
11:30:57	37	Duane Bez	Be Easy	Double Non-Spin	188
11:32:59	1590	Christopher Dees	Slippery When Wet	Single Non-Spin	182
11:34:00	114	Rafael Brom	SELAH	Single Non-Spin	179
11:34:00	792	Grahame Gay	Chloe	Single Non-Spin	179
11:34:21	40175	John Frederick	Ananda	Double GBCA Cruising Club	178
11:34:41	303	Mike Golebiowski	Baltic Raider	Double Non-Spin	177
11:35:42	892	Walter Caldwell	PAYASO	Double Spin	174
11:37:45	713	Eduardo Balun	Lil Bit A Sol	Double GBCA Cruising Club	168
11:37:45	N/A	David Glascock	Shell Seaker	Double Non-Spin	168
11:39:27	273	Johnny Jones	Island Time	Double Non-Spin	163
11:41:50	60120	Chris Alk	Bad Girl	Double Spin	156
11:44:12	176	William Straker	Owl	Double Non-Spin	149
11:45:34	7150	paul tullos	terrorist	Double Non-Spin	145
11:47:16	54176	Jack Spithill	Further	Double Non-Spin	140
11:47:36	2478	Patrick Fiega	Wheee Doggie	Double Non-Spin	139
11:48:58	584	Jim Foster	Big D	Double Spin	135
11:49:39	28	Gary Trinklein	Toccata	Double Non-Spin	133
11:52:02	53	Chris Haas	SolAire	Double Spin	126
11:54:04	590	Rod Nichols Alex Freas	Parsons Project	Double Spin	120
11:56:06	181	Chris Lewis	GB	Double Spin	114
12:00:32	45	Gerhard Wittich	Bayou Baby	Double GBCA Cruising Club	101
12:04:16	5101	PEDRO GIANOTTI	PINGO	Double Spin	90
12:07:40	162	Tom Sutton	Leading Edge	Double Non-Spin	80
12:08:21	286	Kevin Bednar	Stinger	Double Spin	78
12:08:21	649	Bill Lakenmacher	Radiance	Double Spin	78
12:09:22	46864	Greg A Casamayor	Joyride	Double Spin	75
12:18:33	69	Jeff Kitterman	ONO	Double Spin	48

