



THE BUZZARDS YACHT CLUB ONE-DESIGN SAILING INSTRUCTIONS 2015

1. Rules.

All races will be governed by the Racing Rules of Sailing 2013-2016, these sailing instructions and the class rules of each class racing. The H Class may be raced with only one sailor in a boat (modification of class rule). Bullseyes are not permitted to fly spinnakers (modification of class rule).

2. Changes in the Sailing Instructions

Code flag L will be flown from the Committee Boat at least 5 minutes prior to the warning signal for the first class to start. The content of the change will be available from the committee boat either written or by hail depending upon the change.

3. Schedule of Races

Time of warning signal for the first class will be 1:50pm. *The order of starts will be: Stuart Knockabout, Bullseye and H12.* If one class is not racing the order will follow sequentially. Raising the class flag at the warning signal will officially indicate which class is starting. No more than three races per class will be run on one day. A minimum of two boats in a class class will be required for a race to be started.

4. Racing Area

The racing area will be in the general vicinity between Wings and Scraggy Necks. See chart on reverse side of page.

5. Courses & Marks

Courses will be posted on a board on the starboard side of the committee boat. Each class will have its own instructions and will be listed horizontally as follows:

-Class insignia, numbered course to be sailed, and/or marks to be sailed, and number of times around if applicable.

Other delineations include:

-A red letter is to be left to port, a green letter is to be left to starboard.

-Courses will be sailed as diagrammed on the sailing instructions.

-Inflatable marks are designated IM. If all turning marks are inflatable marks, IM will be posted once.

-Lettered marks are government buoys, with the exception of "C" which is a yellow cylindrical shape and "Z" which is Bassetts Island. When rounding Bassetts Island on course "Z", all government marks shall be minded.

The starting and finishing lines will be restricted to boats starting or finishing on any course where the start and finish is in the middle of the course. Boats sailing upwind or downwind and not starting or finishing may not sail through the starting or finishing lines. Boats failing to comply will be scored DSQ.

6. The Start

Races shall be started using the following signals.

SIGNAL	FLAG & SOUND	MIN. TO START
Warning	Class Flag & 1 Sound	5
Preparatory	Preparatory Flag & 1 Sound	4
One-Minute	Preparatory Flag Lowered & 1 Sound	1
Start	Class Flag Lowered & 1 Sound	0

Times shall be taken from the visual signals; the absence of a sound signal shall be disregarded. A short series of signals may be made before the sequence begins to attract attention.

The starting line will be between a staff with an orange flag on the committee boat and a mark. A boat whose warning signal has not yet been made shall keep clear of the starting area and of all yachts whose warning signal has been made. Failure to do so will be grounds for disqualification. A boat failing to start 10 minutes after her starting signal will be scored DNS without a hearing.

7. Change of Course after the Start & Shortening a Course

Any change of course after the start will be signaled by a race committee boat stationed near the mark beginning the first leg affected by the change. Code flag "C" will be displayed and a horn sounded periodically. The change will be signaled before the leading boat has begun the leg, although the new mark may not yet be in position.

If the next mark is to be a lettered mark it will be listed on the course board in the appropriate color. Any further changes to lettered marks will be listed sequentially.

If the next mark is an inflatable mark the signal shall be the display of flag C and a green triangle for a change to starboard or a red rectangle for a change to port. If the length of the leg is to be changed a "-" for shorter or "+" for longer will be displayed next to

code flag C. Subsequent legs may be changed w/o further signaling to maintain the shape of the course.

For a shortened course, Code Flag S will be flown accompanied by two sounds. The finish line will be between Flag S and a nearby mark.

8. The Finish

When the committee boat is on station at the finish line it shall display a blue flag on its starboard side which is one end of the finish line. The other end of the finish line will be a nearby mark on the starboard side of the committee boat and perpendicular to the blue flag. This is a change from past years. In the event the race committee boat is not on station establishing the finish line, it shall be a line extending from the required side of the finishing mark at right angles to the course from the last mark and of the shortest practical length.

9. Time Limit

Will be 2-1/2 hours. If no boat finishes within that time the race will be abandoned. Boats finishing more than 30 minutes after the first yacht finishes will be scored "Did not finish."

10. Retiring

A boat that starts a race and retires from the race before finishing should make an effort to notify the race committee.

11. Penalty

Rule 44.1 will apply.

12. Protests

All protests must be made in accordance with Part 5, Section A of RRS. Written protests must be filed in person or by e-mail with the Race Committee Chairperson by 7:00 PM of the day of the race (see below).

13. Scoring, Series & Re-sails

13.1 A Low-Point Scoring System will be used in scoring all series. DNC will be scored two more points than the number of boats starting that race. DNS, OCS, RET, and DSQ will be scored one more point than the number of boats starting that race.

13.2 A weekend series will consist of a minimum of two races run on the 4th of July or Labor Day weekends. If the 4th of July or Labor Day cup race is cancelled, it will not be re-sailed nor awarded that year.

13.3 A minimum of four races will constitute a monthly series. If more than four races are raced, the best four will be used to determine the points for that series. The Summer Series is determined by adding the points for the July series to the points for the August series. A weekend series will consist of a minimum of two races run on the 4th of July or Labor Day weekends. If the 4th of July or Labor Day cup race is cancelled, it will not be re-sailed or awarded that year.

13.4 With two exceptions, Saturday races postponed will be made up the following Saturday with a scheduled race. First exception: races postponed on 4th of July and Labor Day Saturdays will be made up that Sunday. In that case, the first Sunday race(s) will be considered monthly series races and the last race will be the Cup race. Second exception: any July Series race(s) not completed in July is/are cancelled. Any August series race(s) not completed by the end of racing on Labor Day Sunday is/are cancelled.

14. Cancellations & Delays

Racing will be canceled or delayed if there are sustained winds over 25 mph and/or any other conditions deemed unsuitable for racing. An automated e-mail, text message or phone call will be sent to registered competitors detailing the cancellation, change or other instructions.

15. Numbers

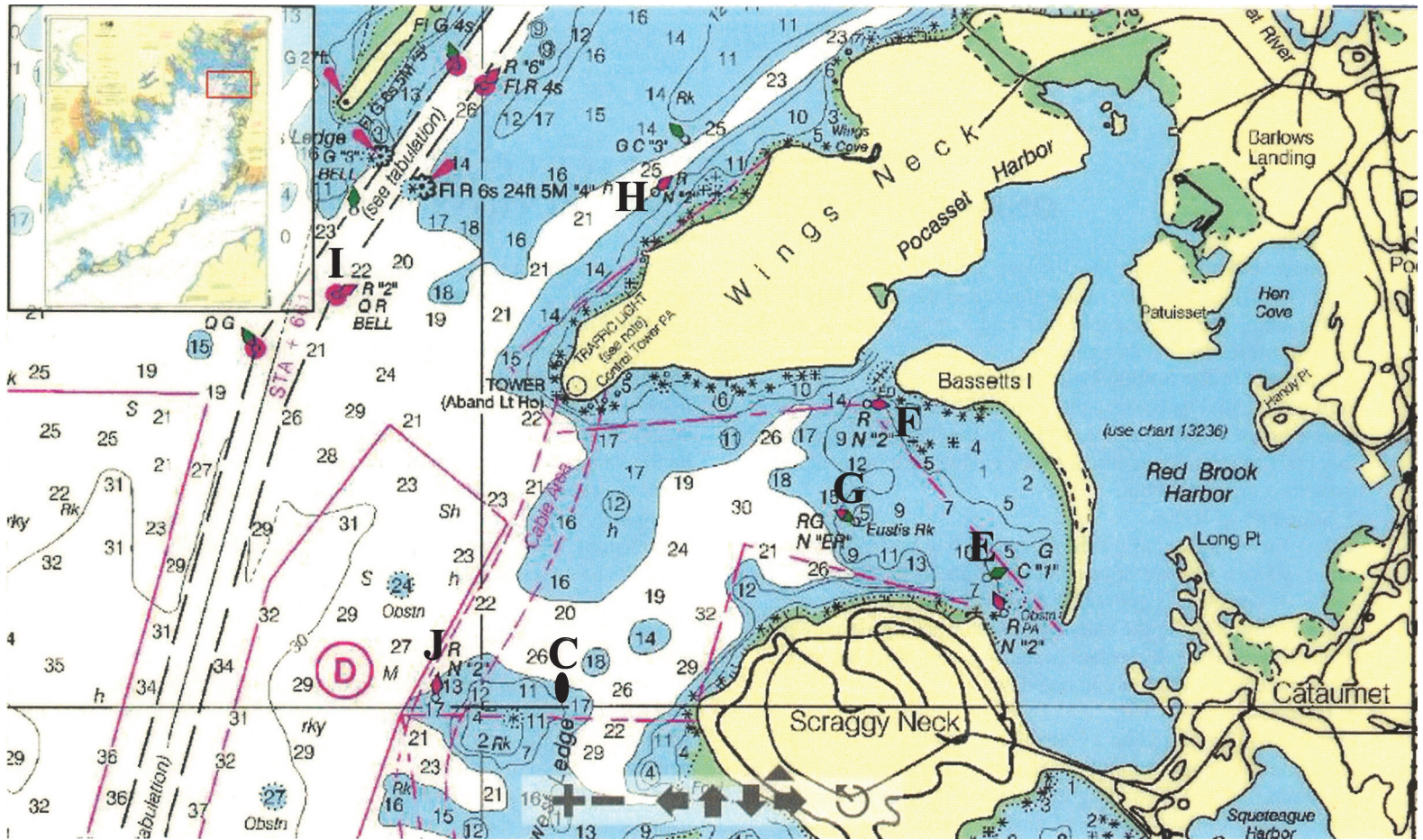
Shall be displayed by all boats on both sides of the mainsail and spinnaker. All other markings are not required.

16. Life-saving Equipment

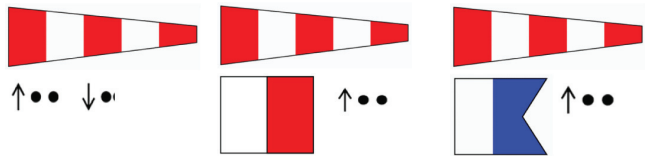
Each boat shall have appropriate Personal Flotation Devices (PFDs) conforming to government regulations. The Race Committee encourages all sailors and racers to wear appropriate PFDs for their safety. It is the responsibility of each sailor/racer to be as safe as possible when racing.

Race Committee Chairman

David Korb dckorb@aol.com 917 670 8242 (cell)



Postponement Signals

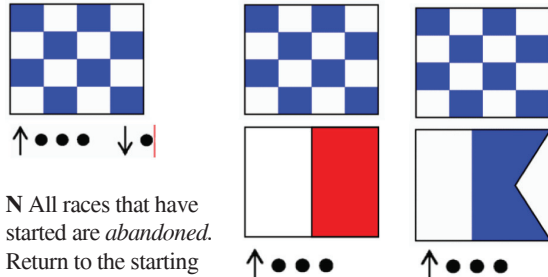


AP Races not started are *postponed*. The warning signal will be made 1 minute after removal unless at that time the race is *postponed* again or *abandoned*.

AP over H Races not started are *postponed*. Further signals ashore.

AP over A Races not started are *postponed*. No more racing today.

Abandonment Signals

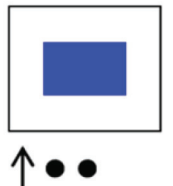


N All races that have started are *abandoned*. Return to the starting area. The warning signal will be made 1 minute after removal unless at that time the race is *abandoned* again or *postponed*.

N over H All races are *abandoned*. Further signals ashore.

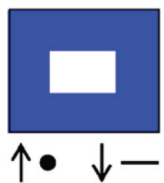
N over A All races are *abandoned*. No more racing today.

Shortened Course

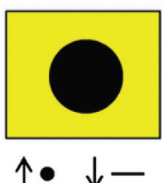


S The course has been shortened. Rule 32.2 is in effect.

Preparatory Signals



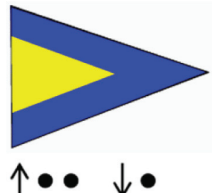
P Preparatory signal.



I Rule 30.1 is in effect.



X Individual recall.



First Substitute General recall. The warning signal will be made 1 minute after removal.

Other Signals



M The object displaying this signal replaces a missing *mark*.



(no sound)
Blue flag or shape. This race committee boat is in position at the finishing line.



L Ashore: A notice to competitors has been posted. Afloat: Come within hail or follow this boat.

Change the Next Leg



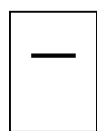
C The position of the next *mark* has been changed:



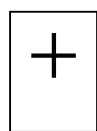
to starboard;



to port;



to decrease the length of the leg;

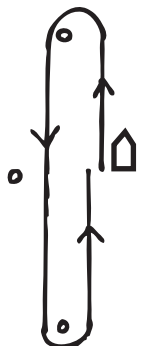


to increase the length of the leg.

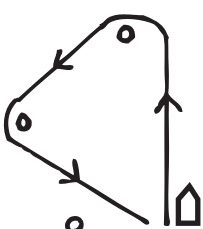
1



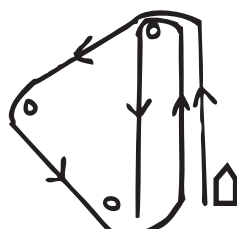
2



3



4



5

