

2015 Island Hop Regatta  
July 11<sup>th</sup> and 12<sup>th</sup>, 2015  
Ocean Springs Yacht Club/Ocean Springs Sailing Squadron

## SAILING INSTRUCTIONS

### 1. RULES

**1.1** The regatta will be governed by the rules as defined in *The Racing Rules of Sailing 2013-2016* and the respective class rules.

**1.2** Racing rule 44.1 will be changed as follows: The two-turn penalty is replaced by a one-turn penalty.

### 2. NOTICE TO COMPETITORS

Notices to competitors will be posted on the official notice board located outside the bar upstairs at the club.

### 3. CHANGES TO SAILING INSTRUCTIONS

Any change to the sailing instructions will be posted before 0900 on the day it will take effect, except that any change to the schedule of races will be posted by 2000 on the day before it will take effect.

### 4. SIGNALS MADE ASHORE

Signals made ashore will be displayed from the South corner of the 2<sup>nd</sup> floor of the club.

When AP is displayed ashore, "1 minute" is replaced with "not less than 30 minutes" in the race signal AP.

### 5. SCHEDULE OF RACES

Saturday, July 11<sup>th</sup>

0930 – Competitors Meeting under the club

1030 – Warning signal for Race 1, race 2 to follow, a brief will be held on the island.

Sunday, July 12<sup>th</sup>

0930 – Competitors meeting under the club

1030 – Warning signal for Race 3

### 6. CLASS FLAGS

Class flags, classes and order of starts for Race 1 will be described at the Competitors meeting. All boats will start races 2 and 3 together.

### 7. COURSES

**7.1 Race 1:** Vessels will proceed SSE from the starting line on a course approximately 150 degrees towards the west end of Horn Island. AIM TOWARDS THE WESTERN EDGE OF THE WESTERNMOST GROUP OF TREES AS YOU ARE APPROACHING THE ISLAND. The Committee Boat will be just off of the Island. Racers will finish between the committee boat and an Orange cylinder.

**7.2 Race 2:** Race 2 will start in the vicinity of the Race 1 finish and will be a reverse of the race 1 course.. The finish will be in the vicinity of the Race 1 start.

**7.3 Race 3:** The course will begin the same as race 1. Both Channel Marker 12 and Channel Marker 2 are to be left to Port. After rounding Channel Marker 2, head east at approximately 100 degrees to the site of the former Large Range Marker. A Race Committee boat or an orange tetrahedron will be at this location and will be described at the Competitors meeting. Leave this mark to port. The finish will be in the vicinity of the start.

**7.4** If a finishing boat is absent when a boat finishes, she should report her finish time, and position relative to nearby boats to the RC as soon as reasonably possible.

## **8. APPENDIX A**

Appendix A show the courses to be sailed and is available upon request and will be posted on the official notice board.

### **Key GPS waypoints: ALL ARE APPROXIMATES**

OSYC (approx.)	#12
30deg 24.400N	30deg 23.418N
88deg 50.460W	88deg 53.814W

#2	Horn Island (approx.)
30deg 21.658N	30deg 15.000N
88deg 54.103W	88deg 44.000W

Range Marker  
30deg 21.011N  
88deg 46.796W

## **9. THE START**

The starting line will be between a staff displaying an orange flag on the Committee boat on the starboard end and the course side of the port end starting mark.

## **10. THE FINISH**

The finishing line will be between a staff displaying an orange flag on the Committee boat and the course side of an orange inflatable shape.

## **11. PROTESTS AND REQUESTS FOR REDRESS**

**11.1** Protest forms will be available on the official notice board

**11.2** Protests must be filed with a member of the race committee within 1 hour of the committee boat dock time. This time will be posted as soon as practical on the official notice board.

**11.3** Notices will be posted no later than 45 minutes after the protest time limit to inform competitors of hearings in which they are parties or named as witnesses. Hearings will be held in the OSYC conference room.

**11.4** Breaches of instructions 12 or 14 will not be grounds for a protest by a boat. Penalties for these breaches may be less than disqualification if the protest committee so decides.

## **12. SCORING**

Scoring will be in accordance with Appendix A, except that no score will be excluded. One race is required to be completed to constitute a series.

## **13. SAFETY REGULATIONS**

**13.1** Before races 1 and 3 all boats are required to sail behind the Committee boat on a starboard tack, hail their sail number, and receive acknowledgement from race committee personnel. Failure to do so may result in disqualification.

**13.2** A boat that retires from any race shall inform the race committee as soon as possible. Failure to do so may result in disqualification.

**NOTE:** This is an offshore race; there will be times when the nearest land will be a minimum of 4 miles away. It is the responsibility of each skipper to ensure that their boat is seaworthy enough to make this passage.

#### **14. REPLACEMENT OF CREW OR EQUIPMENT**

**14.1** Substitution of competitors will not be permitted without prior approval of the PRO.

**14.2** Substitution of damaged or lost equipment will not be allowed unless approved in advance by the PRO.

#### **15. RADIO COMMUNICATION**

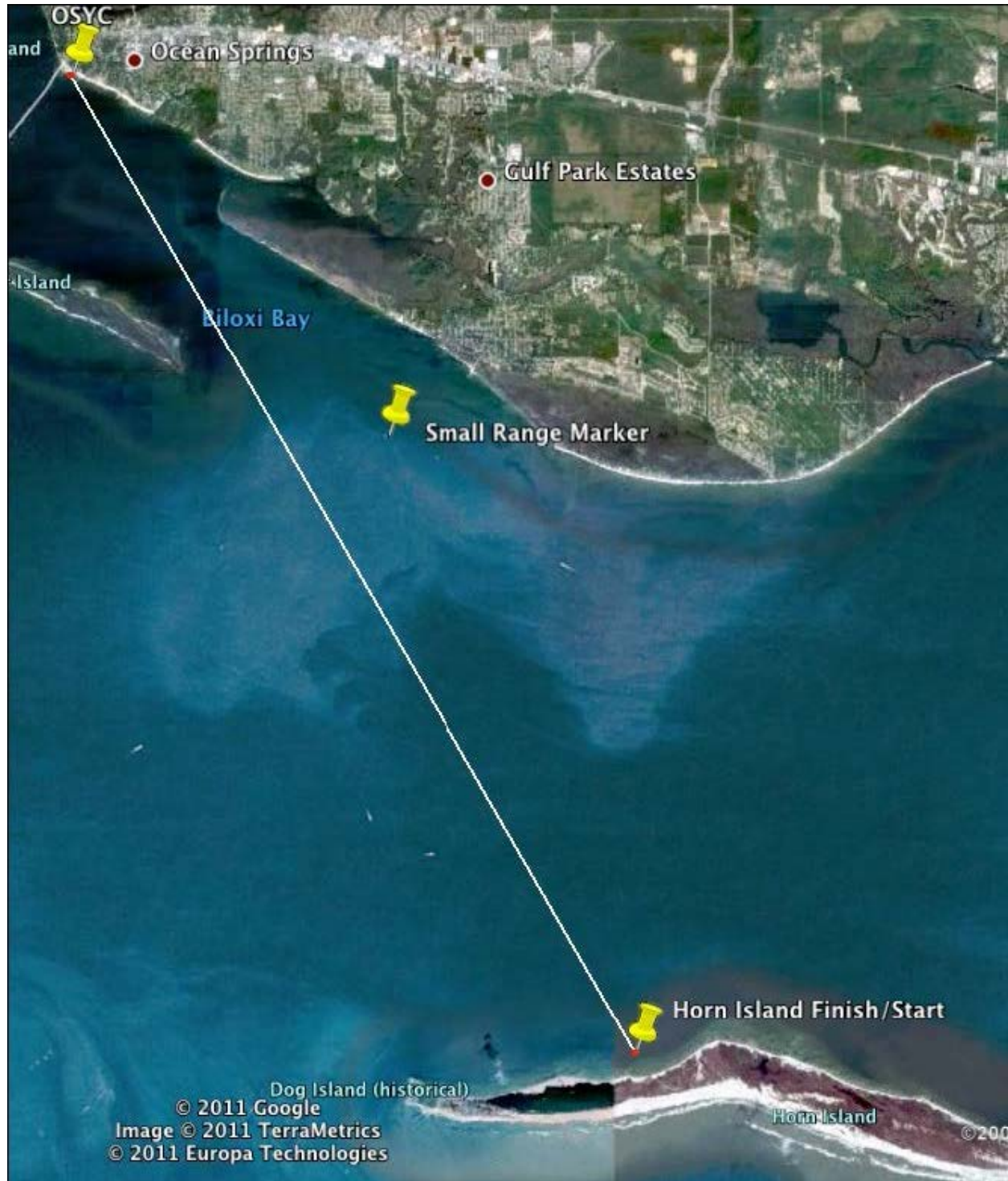
Except in an emergency, a boat shall neither make radio transmissions while racing nor receive radio communications not available to all boats. This restriction also applies to mobile phones.

#### **16. DISCLAIMER OF LIABILITY**

Competitors participate in the regatta entirely at their own risk. See rule 4, Decision to Race. The organizing authority will not accept any liability for material damage or personal injury or death sustained in conjunction with or prior to, during or after the regatta.

## APPENDIX A

Day 1: Races 1 and 2



## Day 2: Race 3

