



**23rd St Croix Yacht Club International Regatta
Optimist Circle
St Croix Yacht Club
Teague Bay, St Croix USVI
November 14 -15, 2015**



SAILING INSTRUCTIONS

1 RULES

The regatta will be governed by the rules as defined in *The Racing Rules of Sailing*.

- 1.1 Personal Flotation Devices (PFD) shall be worn by all team members, including Safety Officers, at all times while on the water except for brief periods while adjusting personal gear.
- 1.2 Once the warning signal has sounded, Safety Officers and /or parents must clear the nearest boat by no less than 200' and may not coach, handle lines, drive, or call tactics.

2 ENTRIES

Competitors may enter by completing the entry form on line at Regatta Network, paying the entry fee, and presenting the signed waiver at the St Croix Yacht Club during registration no later than 0830 on Saturday 14 November 2015.

3 NOTICES TO COMPETITORS

Notices to competitors will be posted on the official notice board located at west side of clubhouse, facing the tee dock.

4 SIGNALS MADE ASHORE

Signals made ashore will be displayed from the flagpole on the east lawn. If a postponement is signaled ashore, the warning signal will be made not less than 30 minutes after flag AP is lowered.

5 SCHEDULE and CLASS FLAG(S)

A competitors' meeting will be held at 0815 Saturday 14 November in the east room at the SCYC. The warning signal for the first race will be:

Saturday, 14 November: 0930

Sunday, 15 November: 0930

Subsequent races each day will be held as soon as possible after the end of the previous race.

The class flags are:

Optimist – Advanced (red, white & blue)

Optimist Class Flag - White

Optimist – Green

Green Optimist Class Flag

6 RACING AREA

The racing area will be Teague Bay.

7 COURSE[S] and MARKS

All marks will be orange buoys.

Attachment A shows the courses, course designations, the marks in order and the rounding direction of each mark.

8 STARTING AND FINISHING LINES; STARTING SYSTEM

8.1 The starting line will be between an orange flag on the RC signal boat and a nearby mark.

8.2 The finish line will be between a blue flag on the RC signal boat and a nearby mark.

8.3 The starting sequence will be rule 25 with the warning at 5 minutes.

9 PENALTY SYSTEM

For green fleet sailors ONLY, rule 44.1 is changed so that the Two-Turns Penalty is replaced by the One-Turn Penalty

10 TIME LIMIT

10.1 A boat starting more than 5 minutes after her starting signal will be scored DNS without a hearing. This changes rule A4.

10.2 A race may be abandoned by the race committee if the leading boat has not rounded the first mark within 15 minutes of starting. This modifies rule 32.

10.3 The time limit for each race will be 40 minutes for the first boat to finish

10.4 Boats failing to finish within 15 minutes after the first boat in their fleet finishes will be scored one (1) point more than the number of finishing boats and will be scored TLE. This changes rules 35, A4.1, A4.2, A5, and A1.

11 PROTESTS and REQUESTS FOR REDRESS

11.1 A boat intending to protest shall inform the signal boat, on the finish side, as soon as they finish.

11.2 Protests shall be delivered to the Protest Secretary at the clubhouse east room.

11.3 Protests will be heard in the protest tent; all protests will be heard openly.

12 SCORING

12.1 If at least 5 races are completed, each boat's worst score will be excluded from her series score. There will be one throw out for every five races completed.

12.2 One race constitutes a series.

13 DISCLAIMER OF LIABILITY

Competitors participate in the regatta entirely at their own risk. See Rule 4, Decision to Race. The organizing authority will not accept liability for material damage or personal injury or death sustained in conjunction with or prior to, during, or after the regatta.

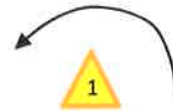
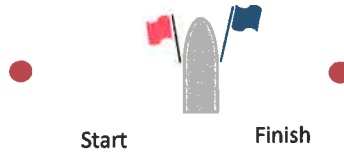
ATTACHMENT A - Course Diagrams



Opti Advanced

Course 1: start, 1, 2s/2p, finish

Course 2: start, 1, 2s/2p, 1, 2s/2p, finish



Opti Green
Start, 1, 2, 3, Finish

