

Gim Hobelman One Design Regatta

July 25–26, 2015
Chicago Corinthian Yacht Club
Chicago, IL

SAILING INSTRUCTIONS

1 RULES

This regatta will be governed by the rules as defined in The Racing Rules of Sailing 2013–2016.

2 ENTRIES

Eligible boats may enter by completing registration and payment of entry fee as prescribed in the Notice of Race for the regatta.

3 NOTICES TO COMPETITORS

Notices to competitors will be posted on the official notice board located on the glass case near the men's locker room at Chicago Corinthian Yacht Club.

4 SIGNALS MADE ASHORE

Signals made ashore will be displayed from the flagpole located on the front lawn of Chicago Corinthian Yacht Club. If a postponement is signaled ashore, the first warning signal will be made not less than 60 minutes after the "AP" is lowered.

5 VHF RADIO

Radio transmissions will be on Channel 72.

6 SCHEDULE OF EVENTS

Saturday, July 25th

800 Registration
900 Competitors Meeting
1030 First Warning

Sunday, July 26th

1000 First Warning
1500 No race will start after this time

7 CLASS FLAGS

Rhodes 19	R19 Class Flag
Vanguard 15	V15 Class Flag
Laser	Laser Class Flag

8 RACING AREA

The racing area will be in the waters east of Montrose Harbor.

9 COURSES AND MARKS

- 9.1 Courses will be Windward/Leewards. See Appendix A, Course Diagrams for course configurations, the order in which marks should be rounded, and the direction they should be rounded.
- 9.2 Courses will be displayed on a board on the signal boat before each race. Course lengths are at the discretion of the committee.
- 9.3 The start and finish lines are “open” and may be disregarded except when maneuvering to start or finish.
- 9.4 All marks shall be yellow tetrahedrons. Change marks shall be orange tetrahedrons.

10 SCORING

- 10.1 Three completed races will constitute a series.
- 10.2 The Race Committee intends to run multiple races. If fewer than 5 races are completed a boat’s series score will be the total of her race scores. If 5 or more races are completed a boat’s series score will be the total of her race scores excluding her worst score subject to rule 90.3(b).

11 THE START

The starting line will be between an orange flag on the signal boat and courseside of the pin.

12 RECALLS

- 12.1 The race committee will endeavor to identify recalled boats by sail number using a loudhailer.
- 12.2 Failure of a boat to hear her recall notification and the order and timing of such hail shall not be grounds for redress.

13 THE FINISH

The finish line will be on the starboard side of the starting line, between a staff displaying an orange flag on the signal boat and the courseside of the finishing mark.

14 TIME LIMIT

The time limit for the first boat to finish shall be 90 minutes. Boats failing to finish within 15 minutes of the first boat will be scored “Time Limit Expired” (TLE). This changes RRS 35.

15 WITHDRAWAL

A boat that withdraws from the race or that does not intend to start a scheduled race shall notify the race committee at the first opportunity.

16 PROTESTS

- 16.1 A boat intending to protest shall report this to the race committee promptly after finishing that race.
- 16.2 Protest forms are available at the race committee office of the clubhouse. Written protests shall be delivered to the organizing authority within the protest time limit, which will be one hour after the race committee signal boat docks.

16.3 Protest time limit and a list of protests submitted to the organizing authority will be posted on the notice board.

16.4 Hearings will begin as soon as practicable after the expiration of the protest time limit. Parties and their witnesses must be available when called

17 PRIZES

Prizes will be awarded following the conclusion of racing on Sunday, July 26th, 2014. Prizes will be awarded for first, second and third place finishers.

18 DISCLAIMER OF LIABILITY

Competitors will participate in this regatta entirely at their own risk. See rule 4, Decision to Race. The organizing authority will not accept any liability for material damage or personal injury or death sustained in conjunction with or prior to, during, or after the regatta.

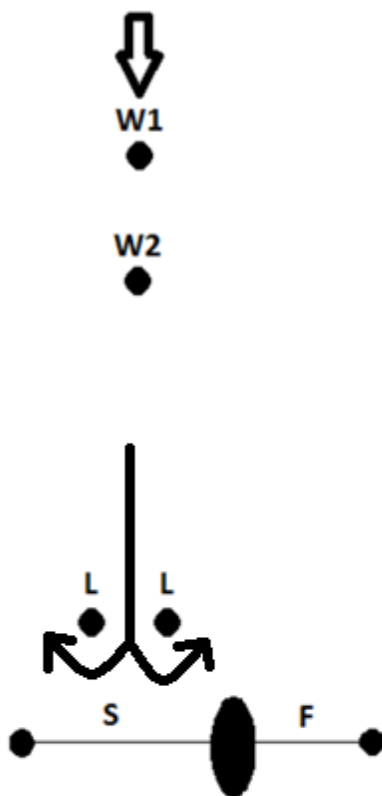
19 PHOTOGRAPHY AND VIDEO RIGHTS

Competitors give absolute right and permission for any photographs or video footage taken of themselves or their competing boat to be published in any media whatsoever for editorial, commercial purposes, or to be used in press information.

20 FURTHER INFORMATION

For further information please view the event website: corinthian.org/ODHobelman or contact Nick Kofski ([nkofski\(at\)me.com](mailto:nkofski(at)me.com)).

APPENDIX A: COURSE DIAGRAMS



Windward/Leeward Courses:	
Course Symbol	Order of Marks
WL	S, W1, L, W1, F
WA	S, W1, L, W2, F
WS	S, W2, L, W2, F

Marks labeled 'L' will form a gate where a boat shall sail between the marks and pass one of them on its leeward side. 'W1' and 'W2' should be rounded to port.