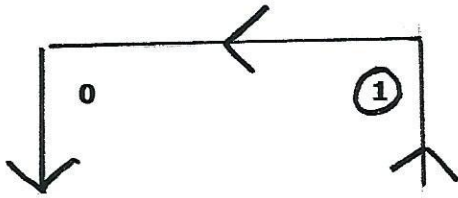
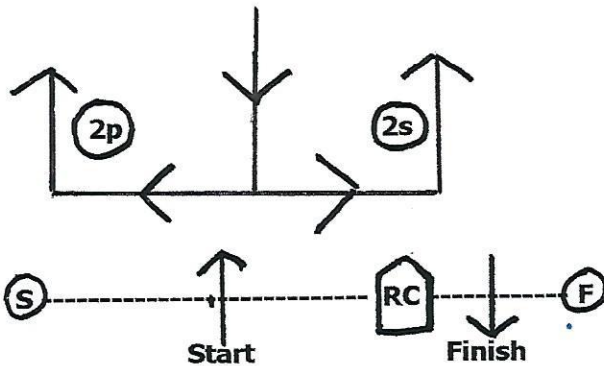


**HYC FALL FLING**  
**APPENDIX A – COURSES**



Offset Leg = 200'



Gate Width = 200'

---

Mark 1 = Weather Mark      0 = Offset Mark      2p/2s = Leeward Gate

Course A = 2 Laps ( Start -- 1 -- 0 -- 2p/2s -- 1 -- 0 -- Finish )

Course B = 3 Laps ( Start -- 1 -- 0 -- 2p/2s -- 1 -- 0 -- 2p/2s -- 1 -- 0 -- Finish )

---

\*Leave all marks to PORT, except for the Leeward Gate.

If only one gate mark is in place, leave it to PORT.

---

\* A red letter will be displayed on the RC boat designating which course to sail.

\* Black numbers will designate the approx. bearing and distance from RC to Mark 1.

\* Red numbers will designate the sail number of the 5o5 Rabbit.