

PENGUIN FROSTBITE & COMET PUMPKIN BOWL 11/07/15

# SAILING INSTRUCTIONS

PRO DOUG FIRTH

## RULES

This regatta will be governed by the Racing Rules of Sailing, sailing Instructions and notices on the official bulletin board.

## NOTICES TO COMPETITORS

Notices and changes to Sailing Instructions will be posted on the official bulletin board located in the club house.

## SKIPPER'S MEETING

The skippers' meeting will be held in the clubhouse at **1000**.

## SCHEDULE OF RACES

The regatta will consist of as many races as possible. There will be no throw-out.

**Warning Gun 1045**

## COURSES

The identifying letter will be displayed from the Committee Boat before or with the warning signal. In the case of Course "M" and "W", the number of laps to be sailed will be indicated in connection with the course signal.

M - Triangle with start/finish in middle of Windward leg.

O - Triangle followed by windward, leeward and windward with start/finish in middle of windward leg. **YOU MAY NOT SAIL THRU THE START/FINISH LINE UNLESS DURING THE START OR ON THE FINISHING LEG**

G - Triangle followed by windward and leeward (Modified Gold Cup).

W - Windward, Leeward with start/finish in middle of windward leg.

All Government Marks and aids to navigation may be disregarded. The course can be changed at the discretion of the Race Committee at any mark of the course.

## CLASS STARTS

Class starting order;

Comet	Comet class flag
Penguin	Penguin class flag

## START

Races will be started using horns or Oli and a three minute sequence. The starting line will be between the orange flag on the committee boat and the nearby orange starting mark.

## RECALLS

**Individual Recalls** will be signaled by code flag "X" (White with blue cross) and one horn blast. The committee will hail the sail number(s) of the premature starter(s). Whether or not the hail is heard, responsibility for starting properly rests with each yacht.

**General Recall** will be signaled by display of code flag "First Substitute" (yellow and blue pennant) and two guns or horn blasts.

## FINISH

The finish line will be between the orange flag on the committee boat and the nearby mark.

## TIME LIMITS

One (1) hour for each class, with a finish time limit of 30 minutes after the first boat finishes. Any boat finishing after the time limit will be scored TLE and given 2 points plus the last properly finishing boat, not to exceed fleet plus one. This changes Rule A5.

## PROTESTS

A yacht desiring to protest must notify the other contestants involved. The protesting yacht shall notify the race committee boat at the finish line and receive acknowledgment. A written protest must be filed with the Race Committee within one hour after the committee boat returns to the dock. Time and location of protest meetings will be posted on the official bulletin board.

## SCORING

The Low Point Scoring System, Appendix A will apply. One race shall be completed to constitute

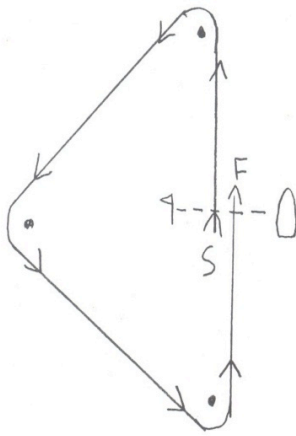
a series.

## **PRIZES**

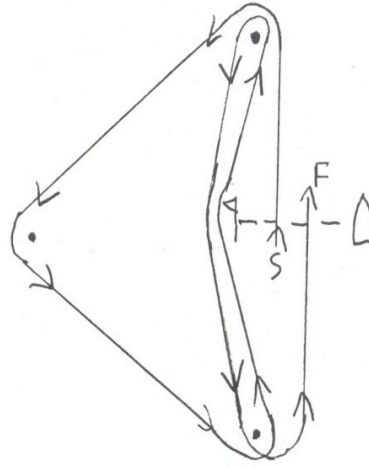
Awards will be presented at the clubhouse.

1st/3, 2nd/5, 3rd/7

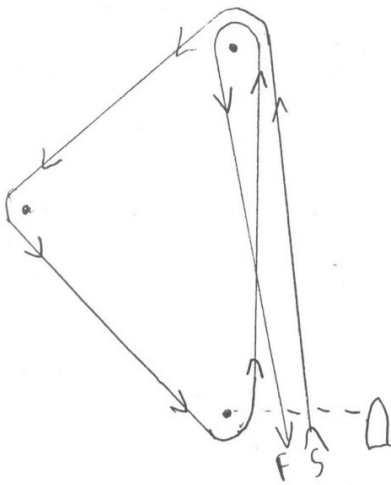
# COURSE DIAGRAMS



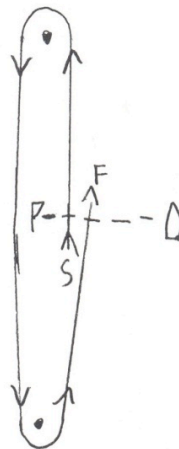
M



O



G



W